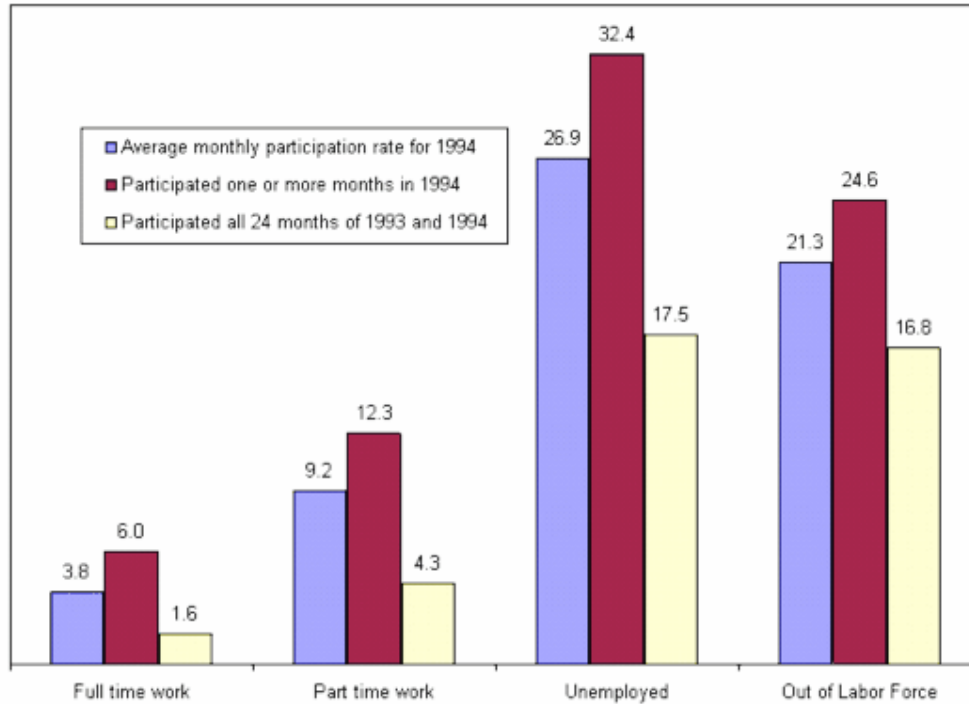


# Program Participation 1993-1994

Figure 9.  
Program Participation Rates by Employment Status (in percent)



Source: U.S. Census Bureau, Current Population Reports, Household Economic Studies, Dynamics of Economic Well-Being: Program Participation, 1993-1994, *Who Gets Assistance?*, P70-69.

---

Contact the Demographic Call Center Staff at 301-763-2422 or 1-866-758-1060 (toll free) or visit [ask.census.gov](http://ask.census.gov) for further information on Program Participation Data.

---

Source: U.S. Census Bureau, Housing and Household Economic Statistics Division  
Last Revised: October 31, 2011