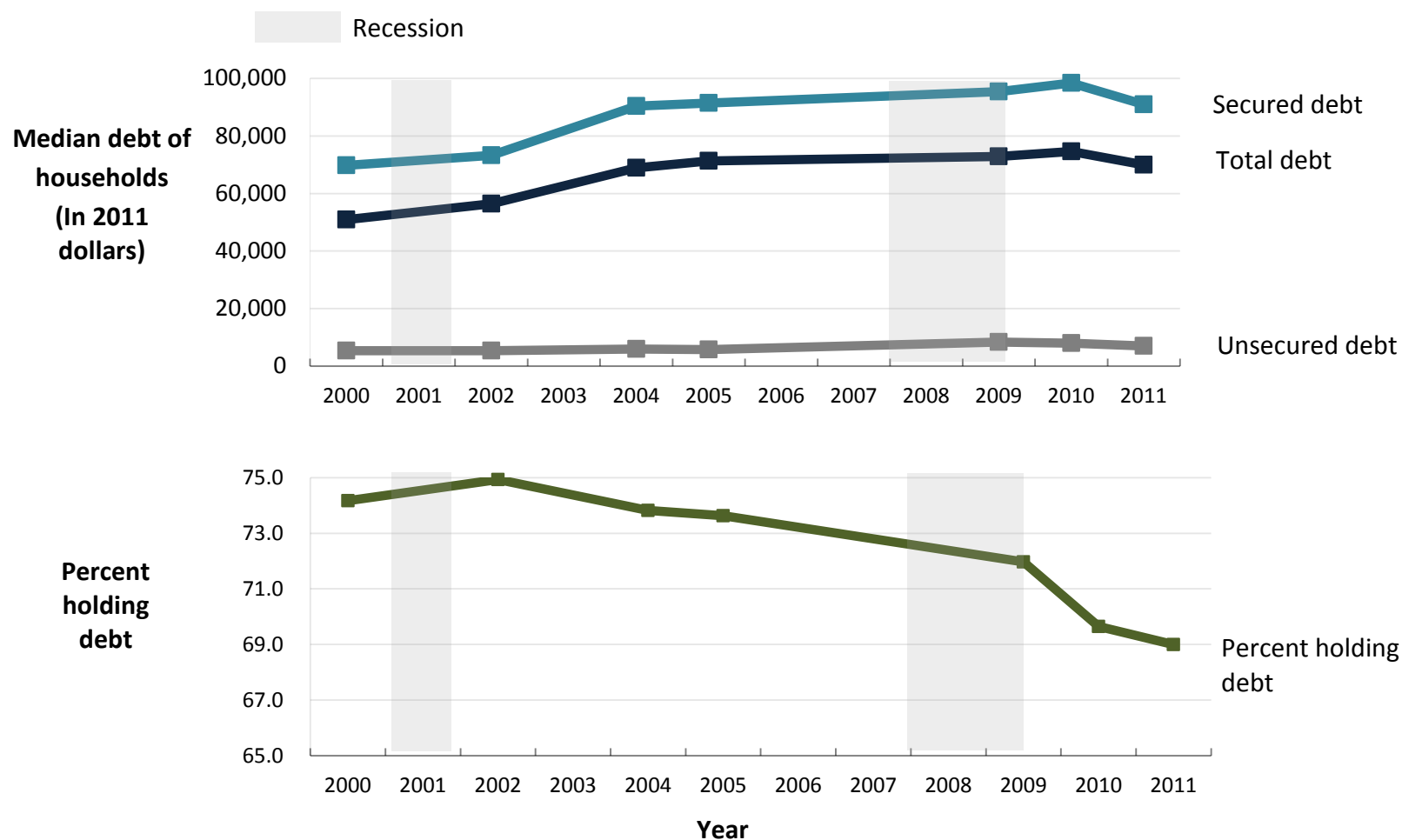


Median Debt of Households and Percent of Households Holding Debt: 2000 to 2011



Source: U.S. Census Bureau, Survey of Income and Program Participation, 1996, 2004 and 2008 Panels.

Note: *Total Household Debt* is total amount of money owed by households. *Secured Debt* is debt backed by collateral. *Unsecured Debt* is debt not backed by collateral. Median household debt is lower than median secured debt since not every household holds secured debt. Please see <http://www.nber.org/cycles/cyclesmain.html> for business cycle reference dates.