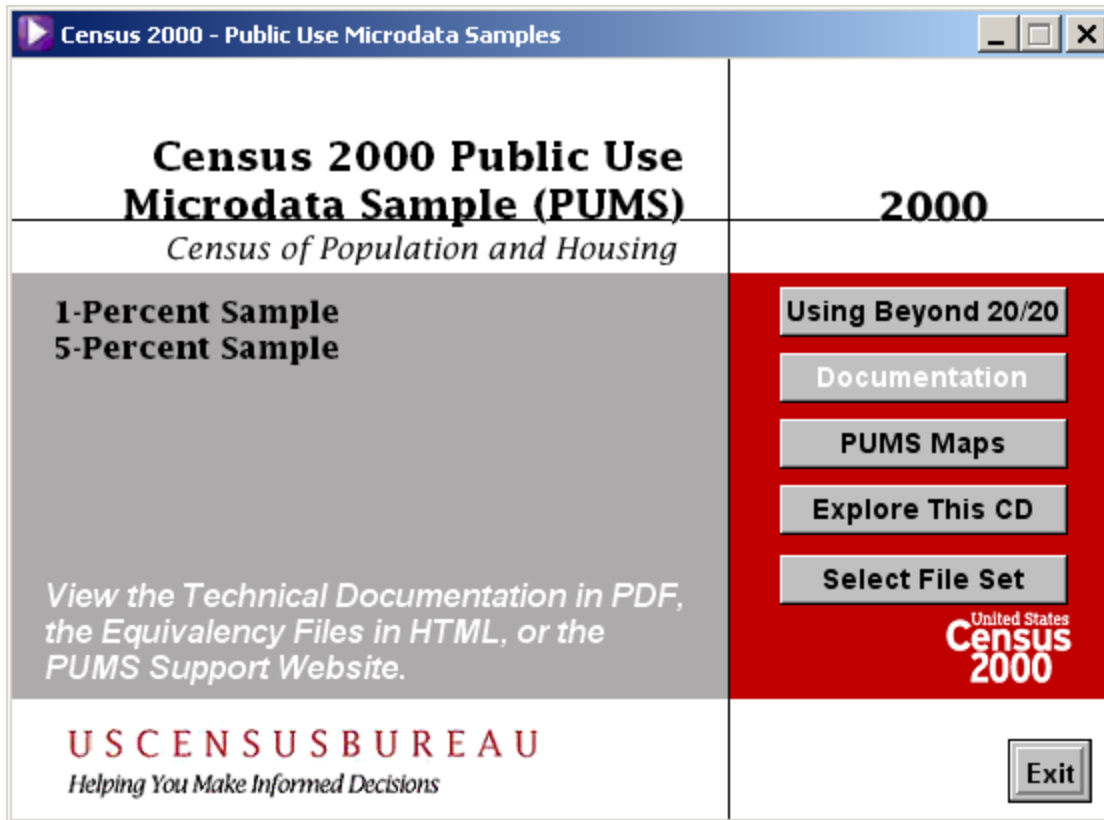


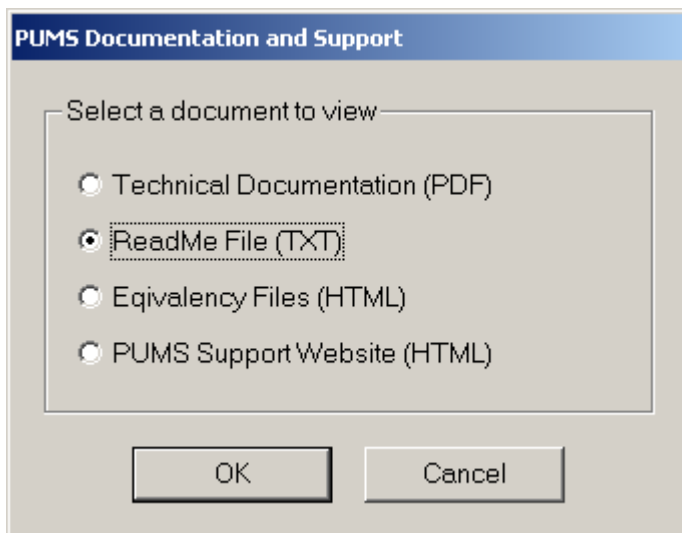
Using
DemoShield™
and
Beyond 20/20 Publication Browser™
To Access the
United States Census 2000
Public Use Microdata Sample
(PUMS)
1-Percent Sample
&
5-Percent Sample
DVD

Administration & Customer Service Division
Electronic Products Development Branch
William S. Savino

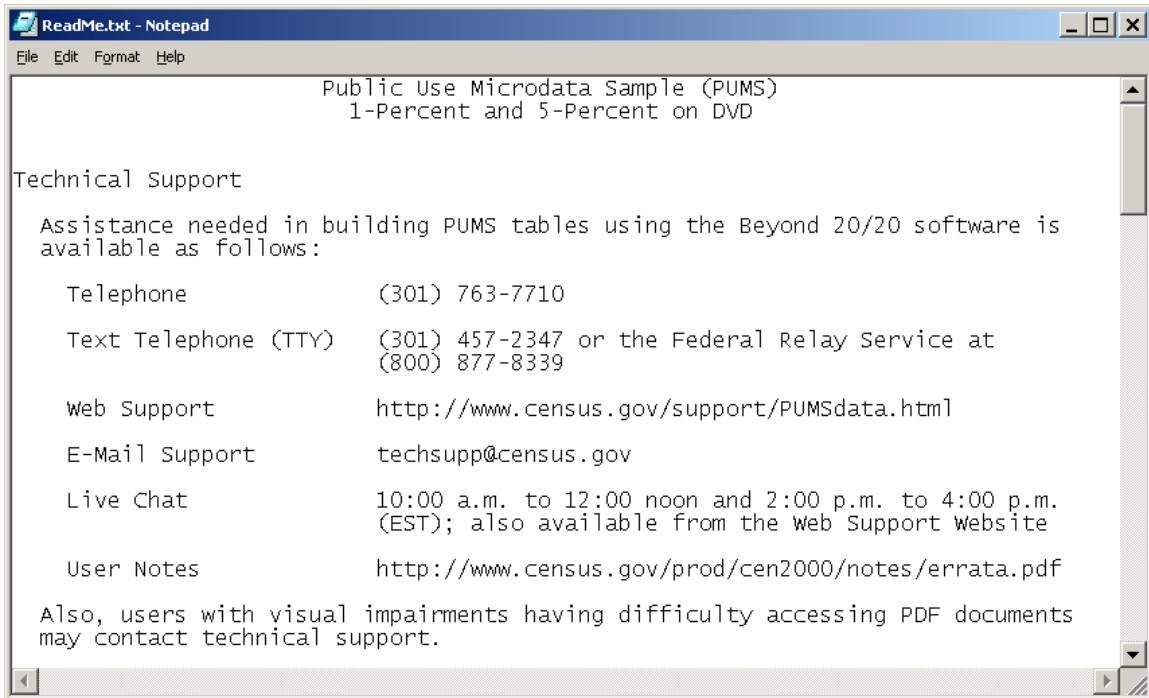


NOTE: If this Census 2000 Public Use Microdata Sample (PUMS) DVD DemoShield Interface does not automatically load, please start D:\Launch.exe.

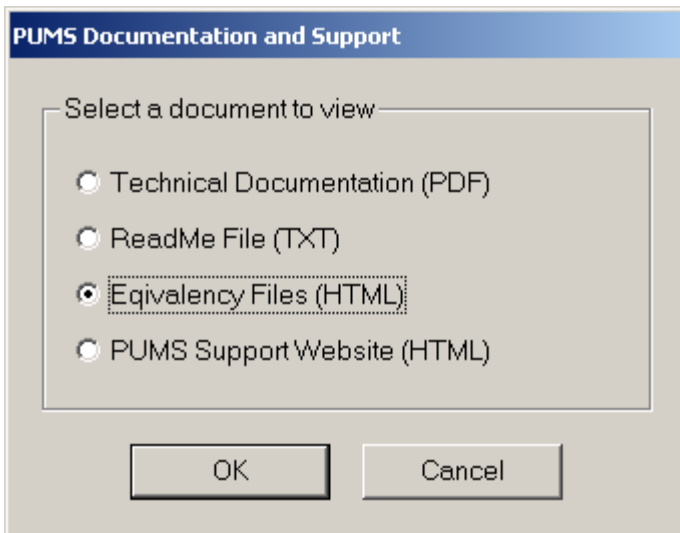
Please click on the “Documentation” button.



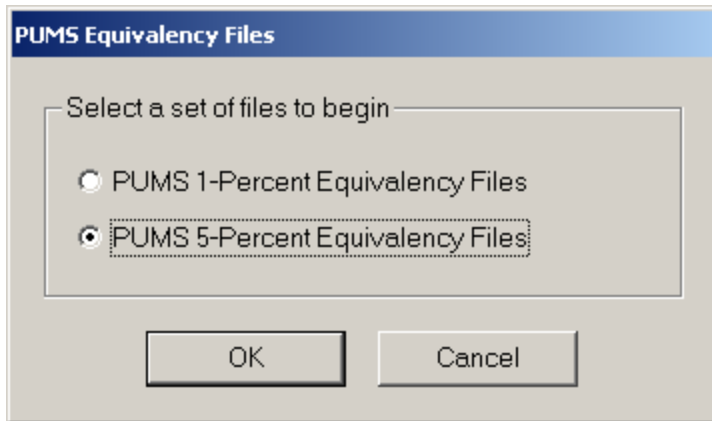
Please select the “ReadMe File (TXT)” radio button. Then click on the “OK” button.



Please, close the ReadMe.txt - Notepad window.



Please select the “Equivalency Files (HTML)” radio button. Then click on the “OK” button.



Please select the “PUMS 5-Percent Equivalency Files” radio button. Then click on the “OK” button.

Census 2000 Public Use Microdata Sample (PUMS) 5-Percent Equivalency Files - Microsoft Internet Explorer

File Edit View Favorites Tools Help

Address <D:\pums5eq.htm> Go Links

Search Web ...attempting to retrieve buttons from Yahoo!...


U.S. Census Bureau

Census 2000 Public Use Microdata Sample (PUMS) 5-Percent Equivalency Files

Public Use Microdata Area (PUMA) List for the 5-Percent Sample

[Go to PUMS 1-Percent Equivalency Files](#)

To begin, select a state from the map to the right or the list below.

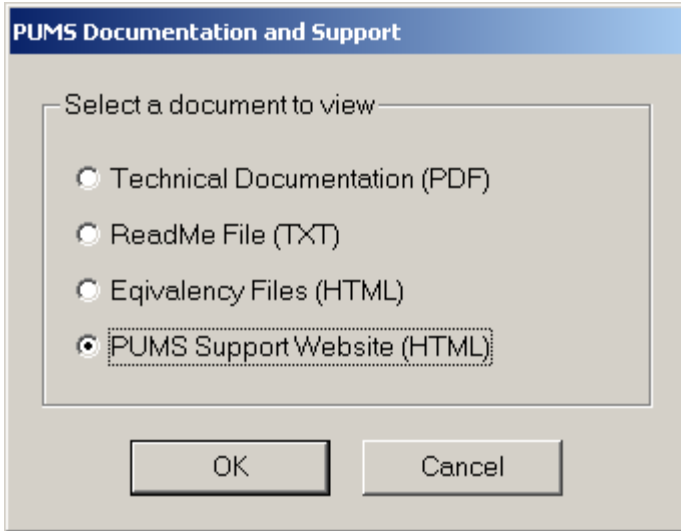


Alabama	Illinois	Montana	Rhode Island
Alaska	Indiana	Nebraska	South Carolina
Arizona	Iowa	Nevada	South Dakota
Arkansas	Kansas	New Hampshire	Tennessee
California	Kentucky	New Jersey	Texas
Colorado	Louisiana	New Mexico	Utah
Connecticut	Maine	New York	Vermont
Delaware	Maryland	North Carolina	Virginia
District of Columbia	Massachusetts	North Dakota	Washington
Florida	Michigan	Ohio	West Virginia
Georgia	Minnesota	Oklahoma	Wisconsin
Hawaii	Mississippi	Oregon	Wyoming
Idaho	Missouri	Pennsylvania	Puerto Rico

USCENSUSBUREAU
Helping You Make Informed Decisions

My Computer

Please, close the Web Browser window.

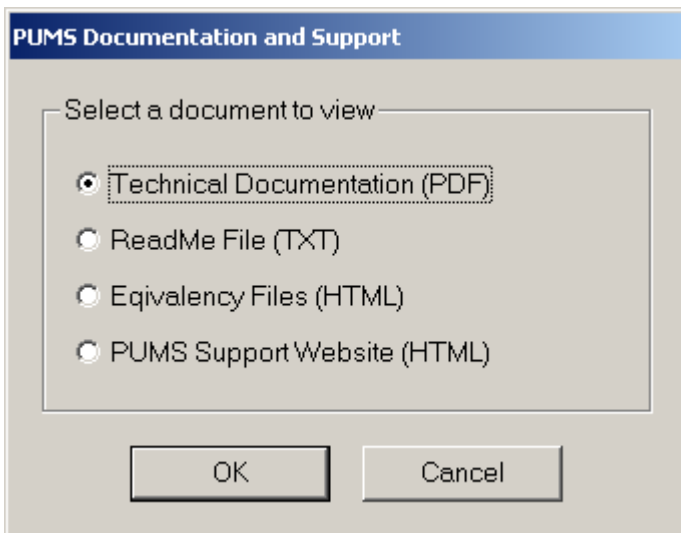


Please select the “PUMS Support Website (HTML)” radio button. Then click on the “OK” button.

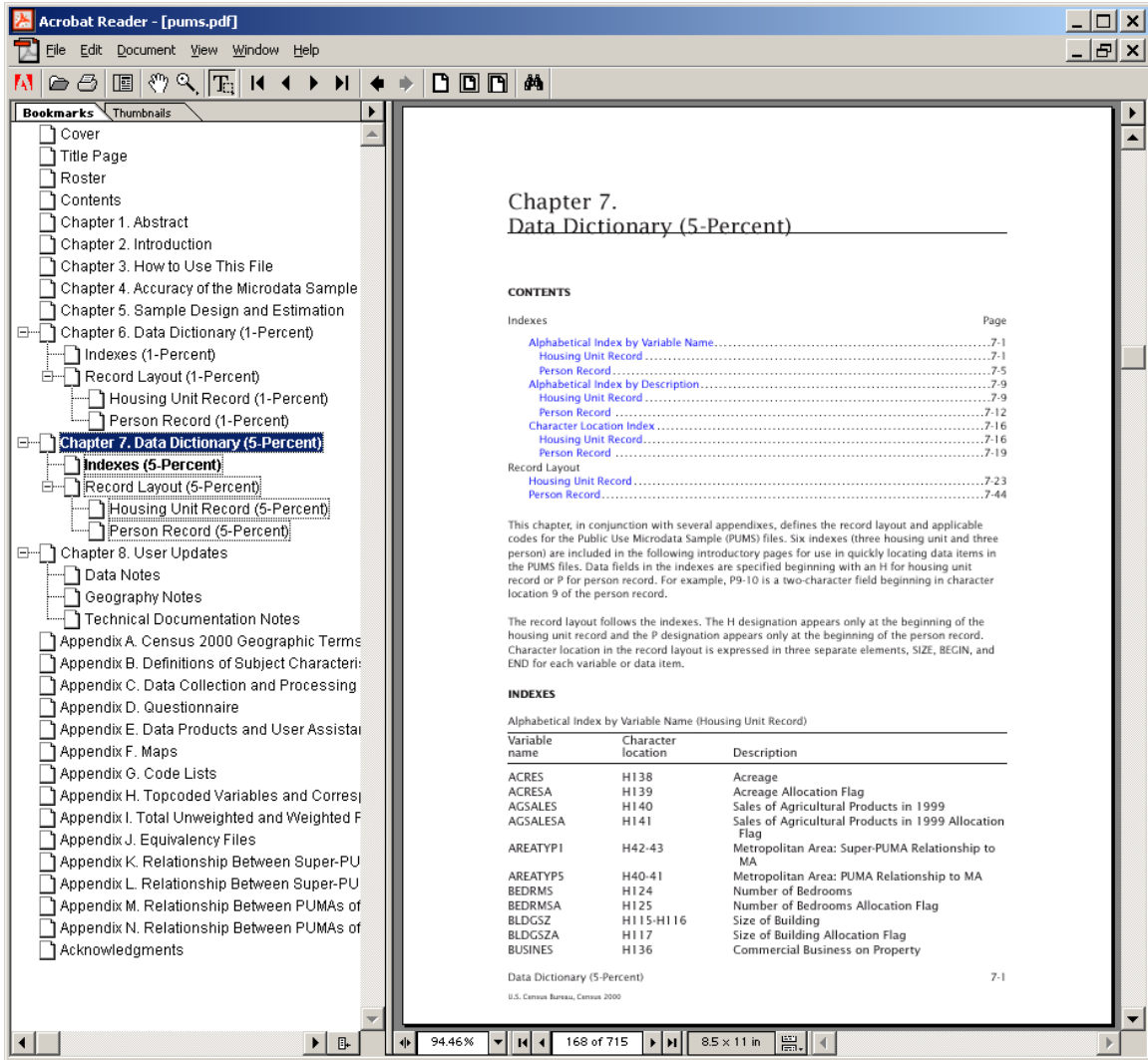
NOTE: If you are not connected to the Internet, this page will not load.

PUMS Support Website (HTML): <http://www.census.gov/support/PUMSdata.html>

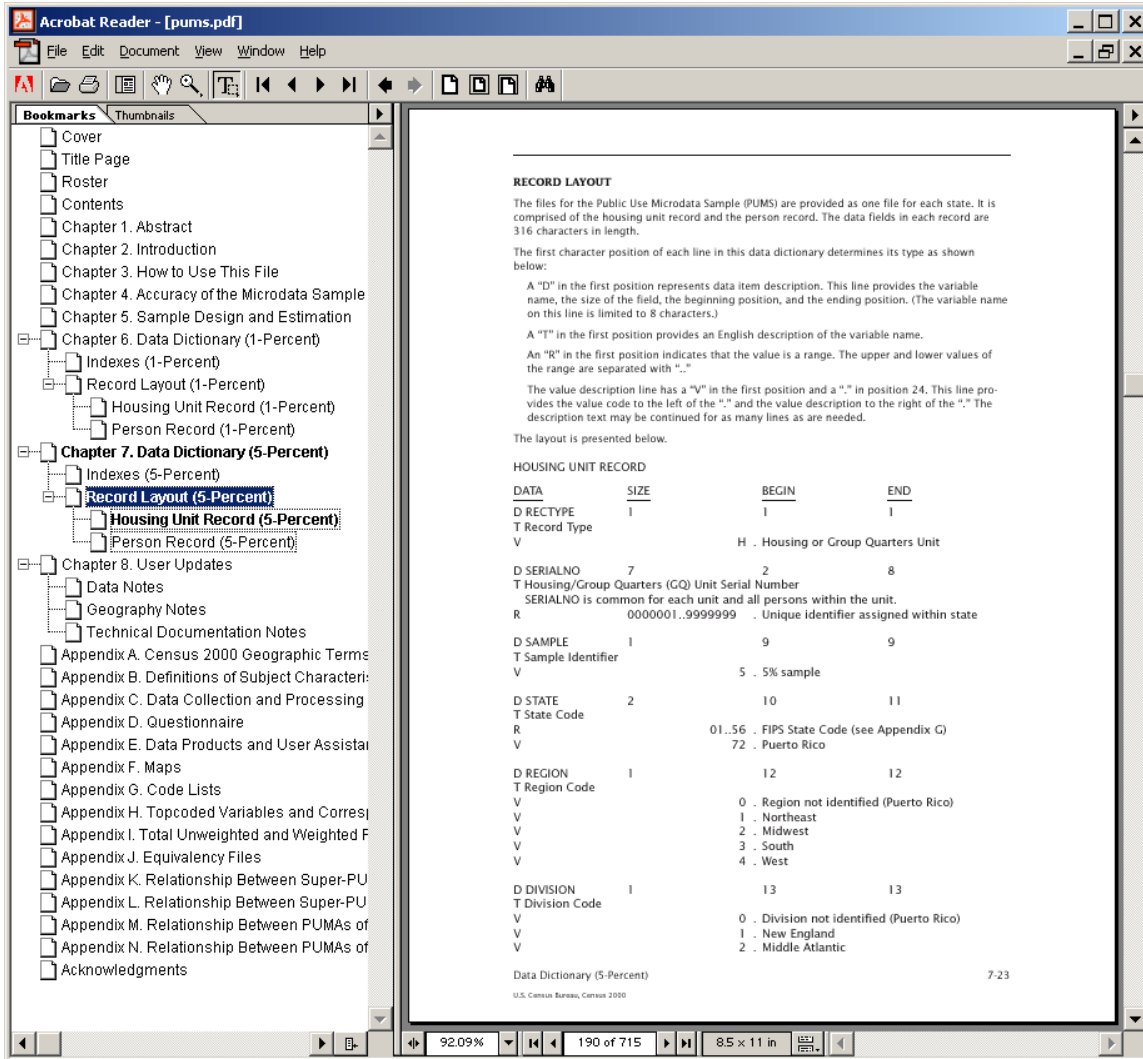
Please, close the Web Browser window.



Please select the “Technical Documentation (PDF)” radio button. Then click on the “OK” button.



Data dictionary indexes link a variables' name with their descriptions.
NOTE: In the software we use h_ for housing, and p_ for person variables.



NOTE: The record layout is sometimes called a “code book”.

Please, close the Adobe Reader window.

The screenshot shows a web browser window titled "Census 2000 - Public Use Microdata Samples". The main content is organized into a grid. The top-left cell contains the title "Census 2000 Public Use Microdata Sample (PUMS)" and the subtitle "Census of Population and Housing". The top-right cell displays the year "2000". The middle-left cell lists "1-Percent Sample" and "5-Percent Sample", with a note: "View the PUMS Maps in PDF format. An Internet Browser is also required." The middle-right cell is a red sidebar with buttons for "Using Beyond 20/20", "Documentation", "PUMS Maps", "Explore This CD", and "Select File Set". The bottom-left cell features the "USCENSUSBUREAU" logo and the tagline "Helping You Make Informed Decisions". The bottom-right cell contains an "Exit" button. The "United States Census 2000" logo is also visible in the red sidebar area.

Census 2000 Public Use Microdata Sample (PUMS) <i>Census of Population and Housing</i>	2000
1-Percent Sample 5-Percent Sample <i>View the PUMS Maps in PDF format. An Internet Browser is also required.</i>	Using Beyond 20/20 Documentation PUMS Maps Explore This CD Select File Set United States Census 2000
USCENSUSBUREAU <i>Helping You Make Informed Decisions</i>	Exit

Please click on the "PUMS Maps" button.

Census 2000 Public Use Microdata Sample (PUMS) Maps - Microsoft Internet Explorer

File Edit View Favorites Tools Help

Address D:\pums5maps.htm

U.S. Census Bureau


Census 2000 Public Use Microdata Sample (PUMS) Maps

Requires Adobe Acrobat or Acrobat Reader

These map files contain both the 1-Percent and 5-Percent PUMS maps.

The linked PDF files are best viewed with Adobe Acrobat 5.0 or Acrobat Reader 5.0. Users without Acrobat Reader or with earlier version should install the included Adobe Acrobat Reader 5 by clicking on the link below.

To begin, select a state from the map to the right or the list below.



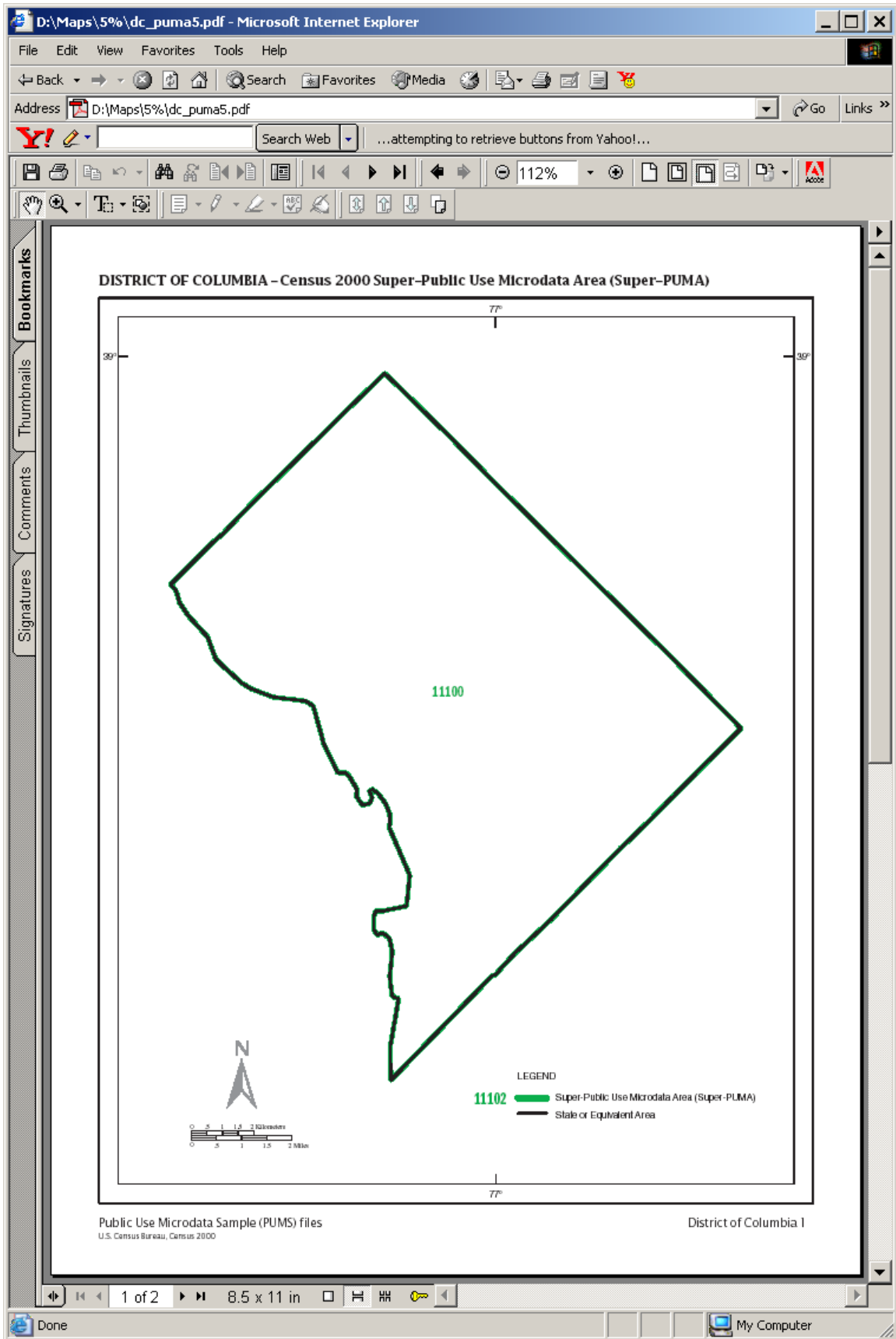
[► Install Acrobat Reader 5](#)

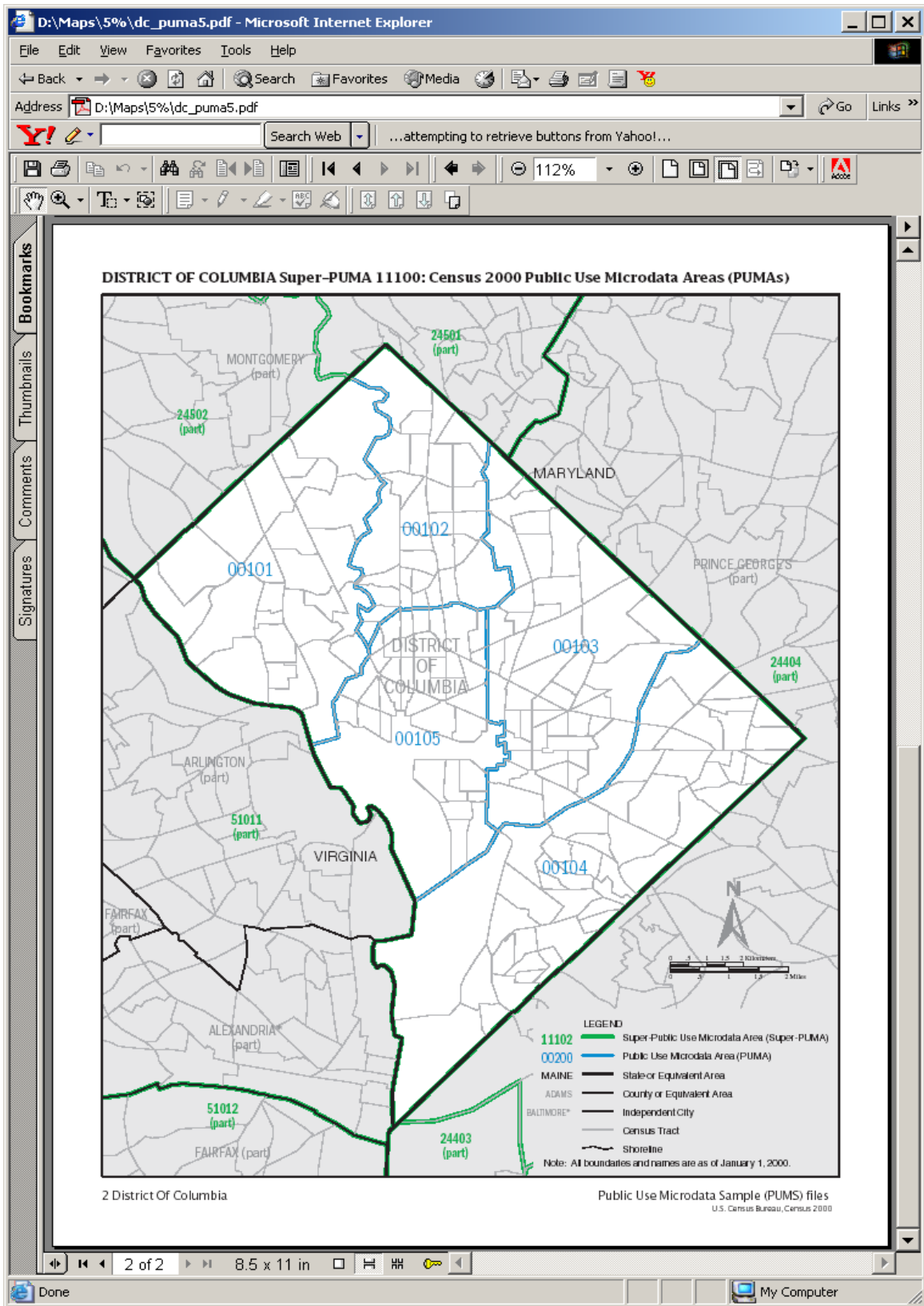
Alabama	Illinois	Montana	Rhode Island
Alaska	Indiana	Nebraska	South Carolina
Arizona	Iowa	Nevada	South Dakota
Arkansas	Kansas	New Hampshire	Tennessee
California	Kentucky	New Jersey	Texas
Colorado	Louisiana	New Mexico	Utah
Connecticut	Maine	New York	Vermont
Delaware	Maryland	North Carolina	Virginia
District of Columbia	Massachusetts	North Dakota	Washington
Florida	Michigan	Ohio	West Virginia
Georgia	Minnesota	Oklahoma	Wisconsin
Hawaii	Mississippi	Oregon	Wyoming
Idaho	Missouri	Pennsylvania	Puerto Rico

USCENSUSBUREAU
Helping You Make Informed Decisions

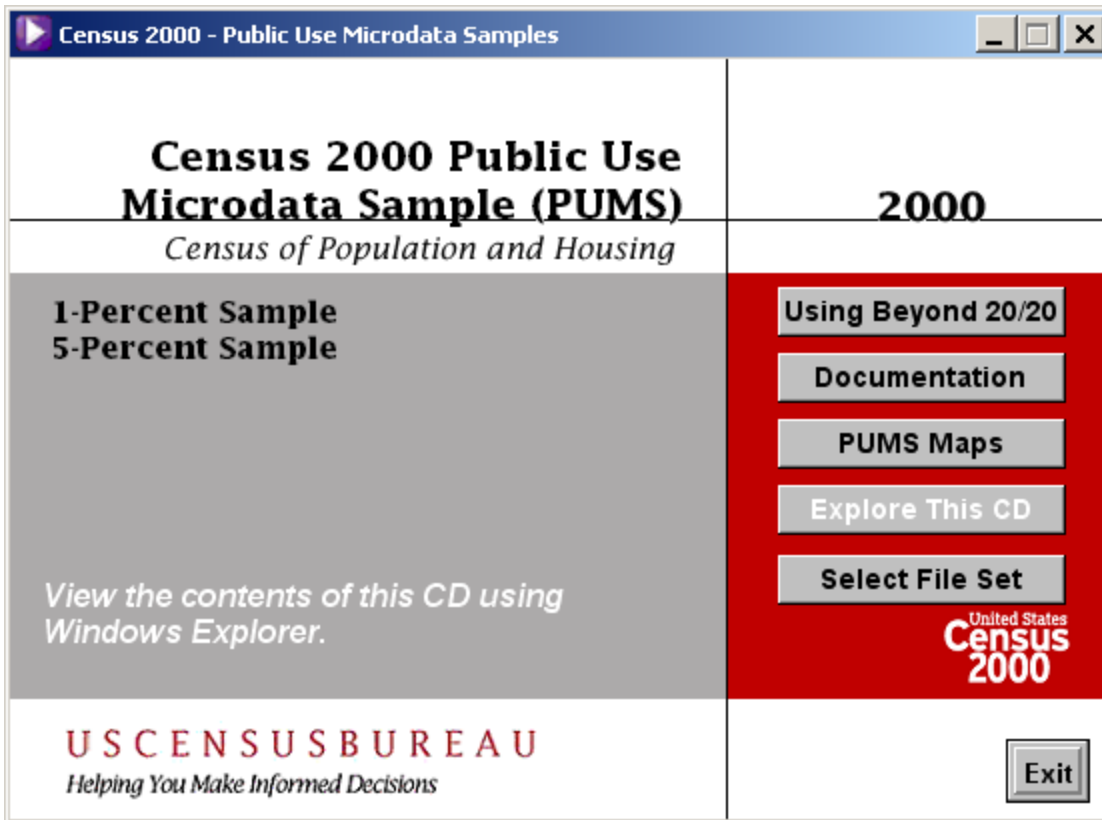
My Computer

Please, click on the map, or listing of the state you would like to see. (ex. District of Columbia)



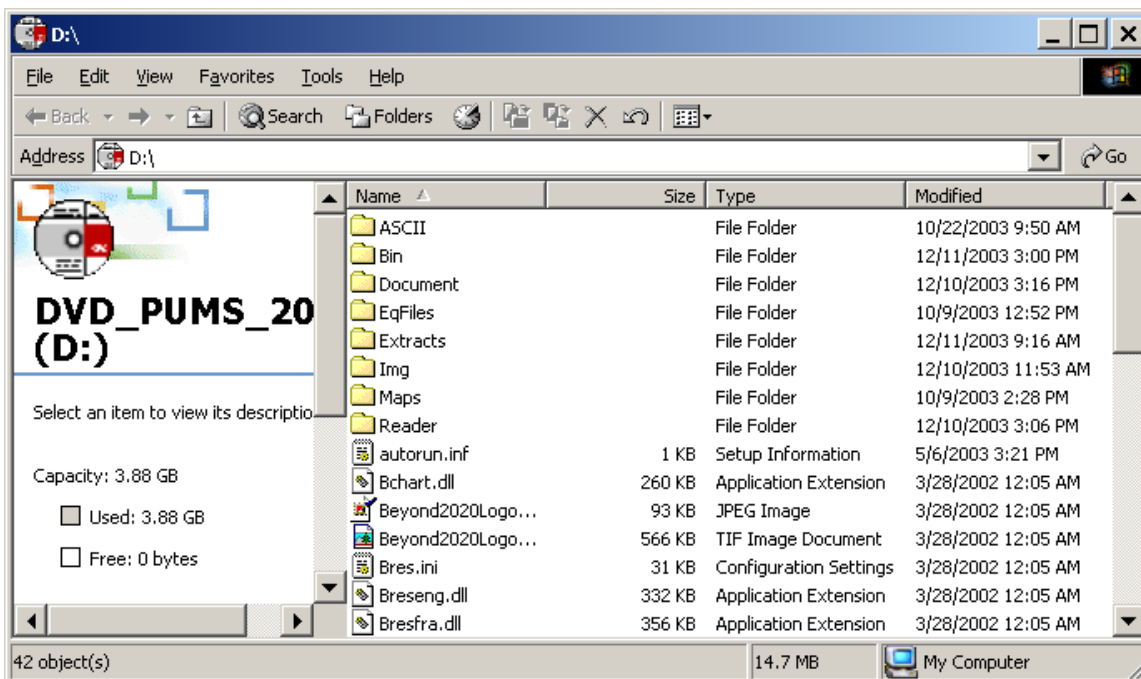


Please, close the Web Browser window.

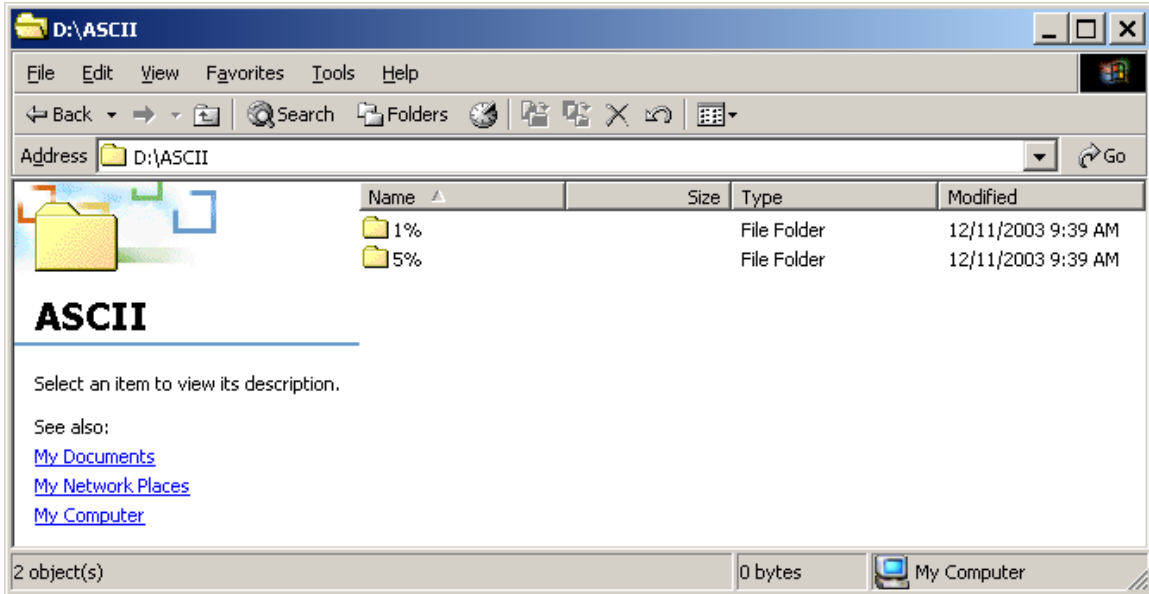


Please click on the “Explore This CD” button.

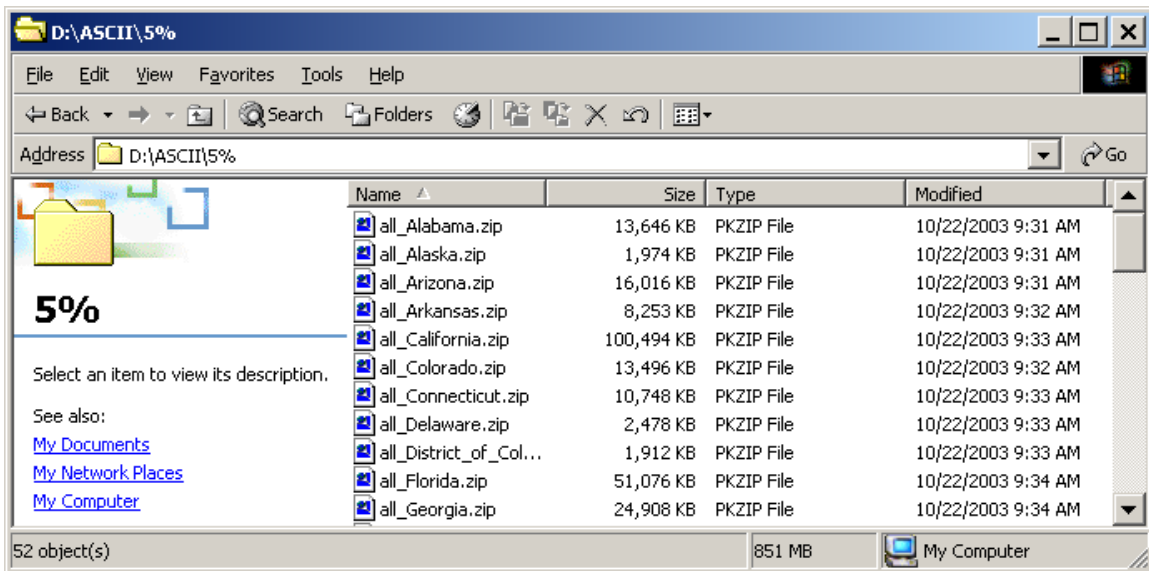
NOTE: All this button does is open Windows Explorer to the DVD drive (D:).



Please, open the “ASCII” subdirectory.



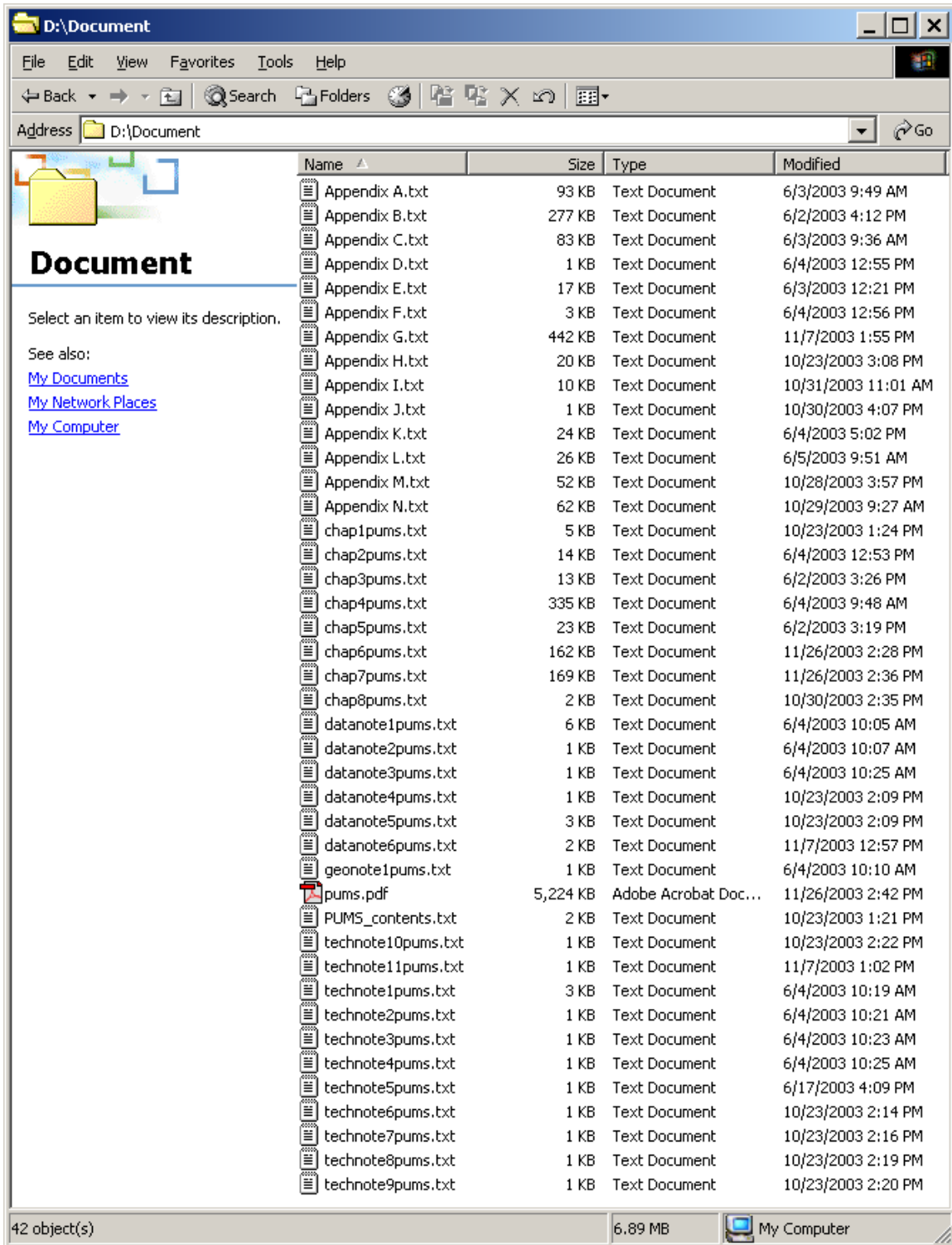
Please, open the “5%” subdirectory.



NOTE: All of the states PUMS ASCII data files have been PKZIPed by state.

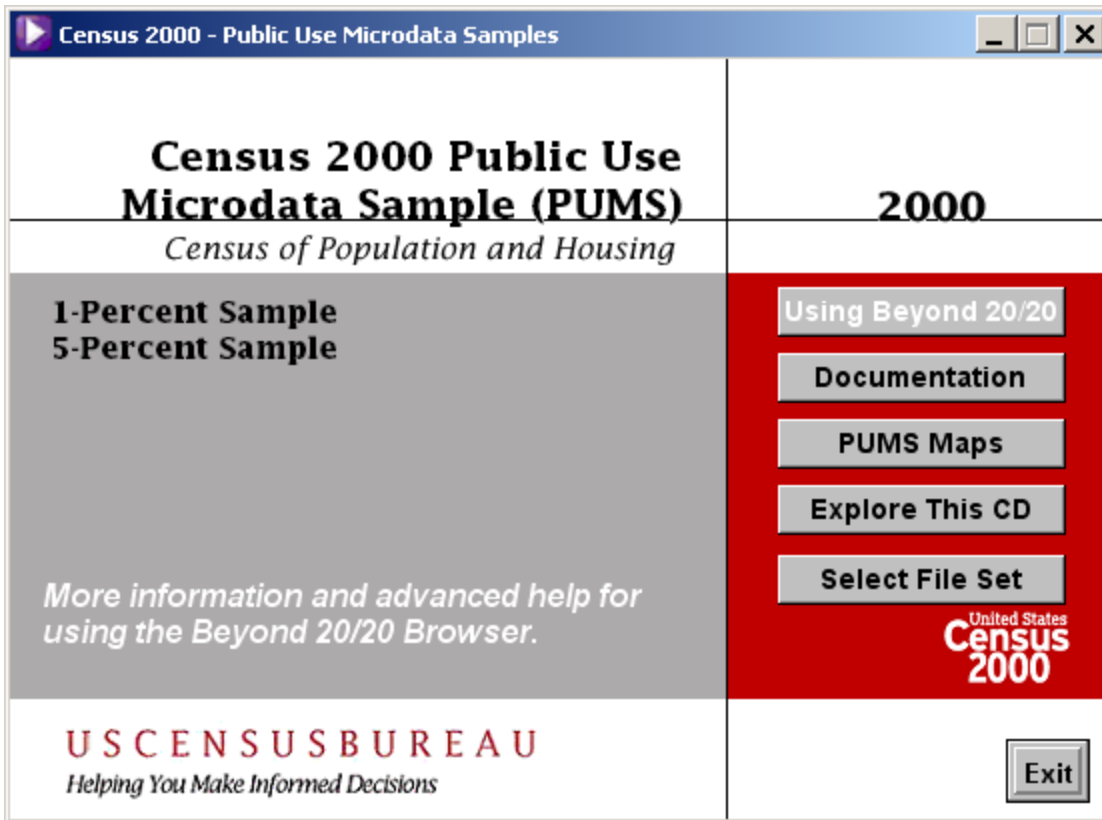
Please, click on the “back” button until you get to the D:\ drive.

Please, open the “Document” subdirectory.

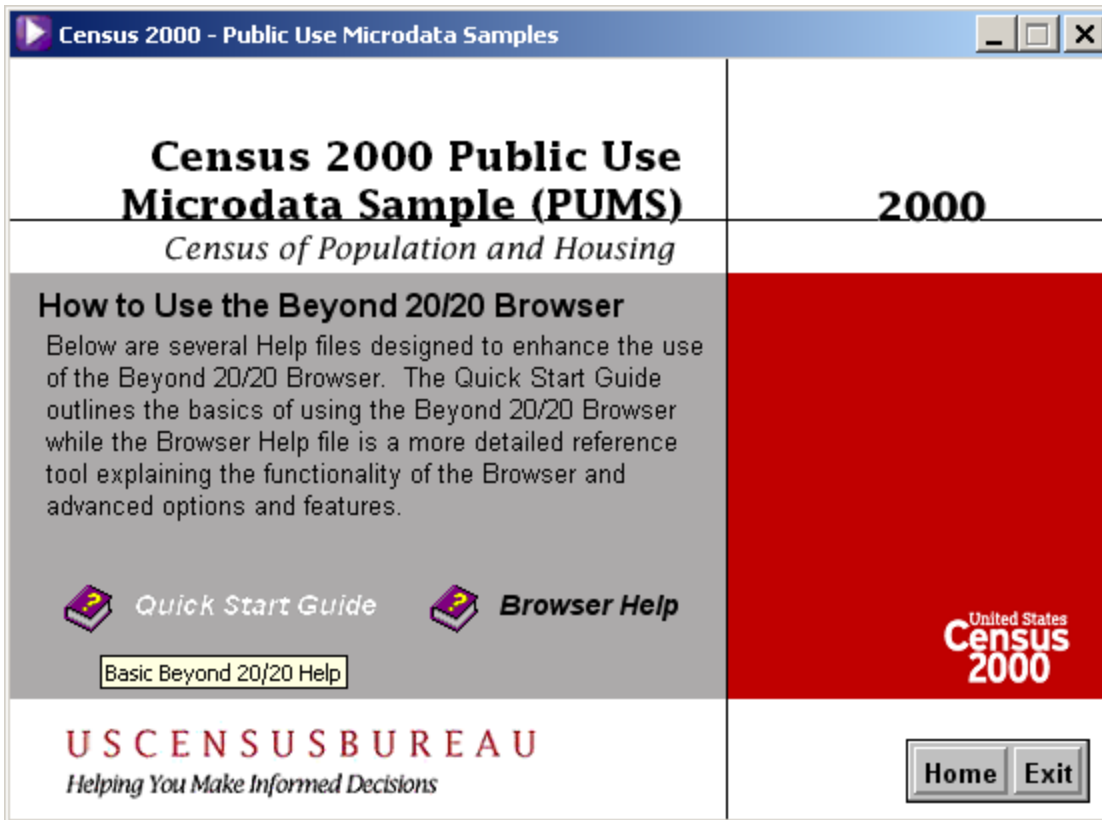


NOTE: This is the location of the technical documentation PDF and its TXT equivalent.

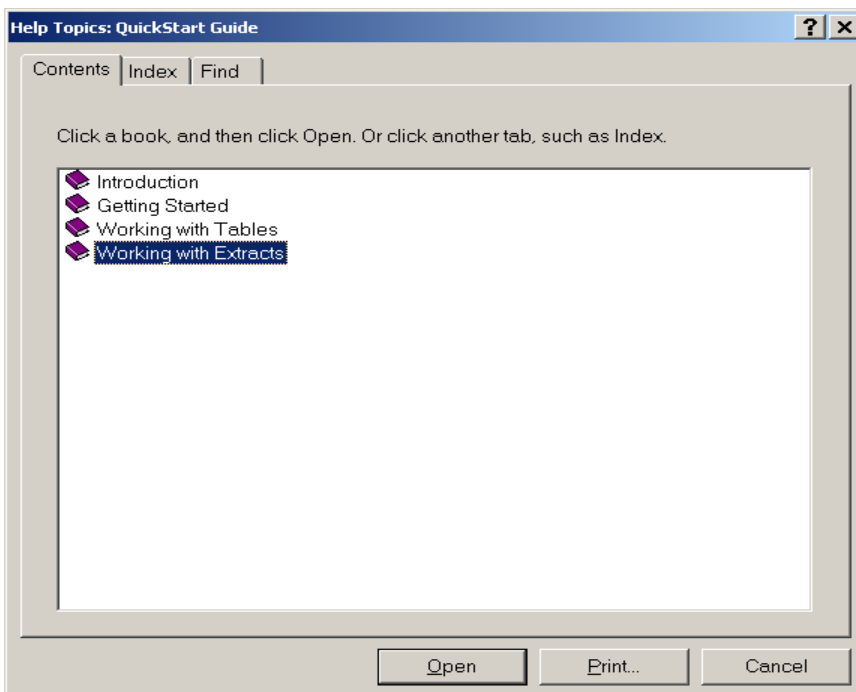
Please, close the Windows Explorer window.



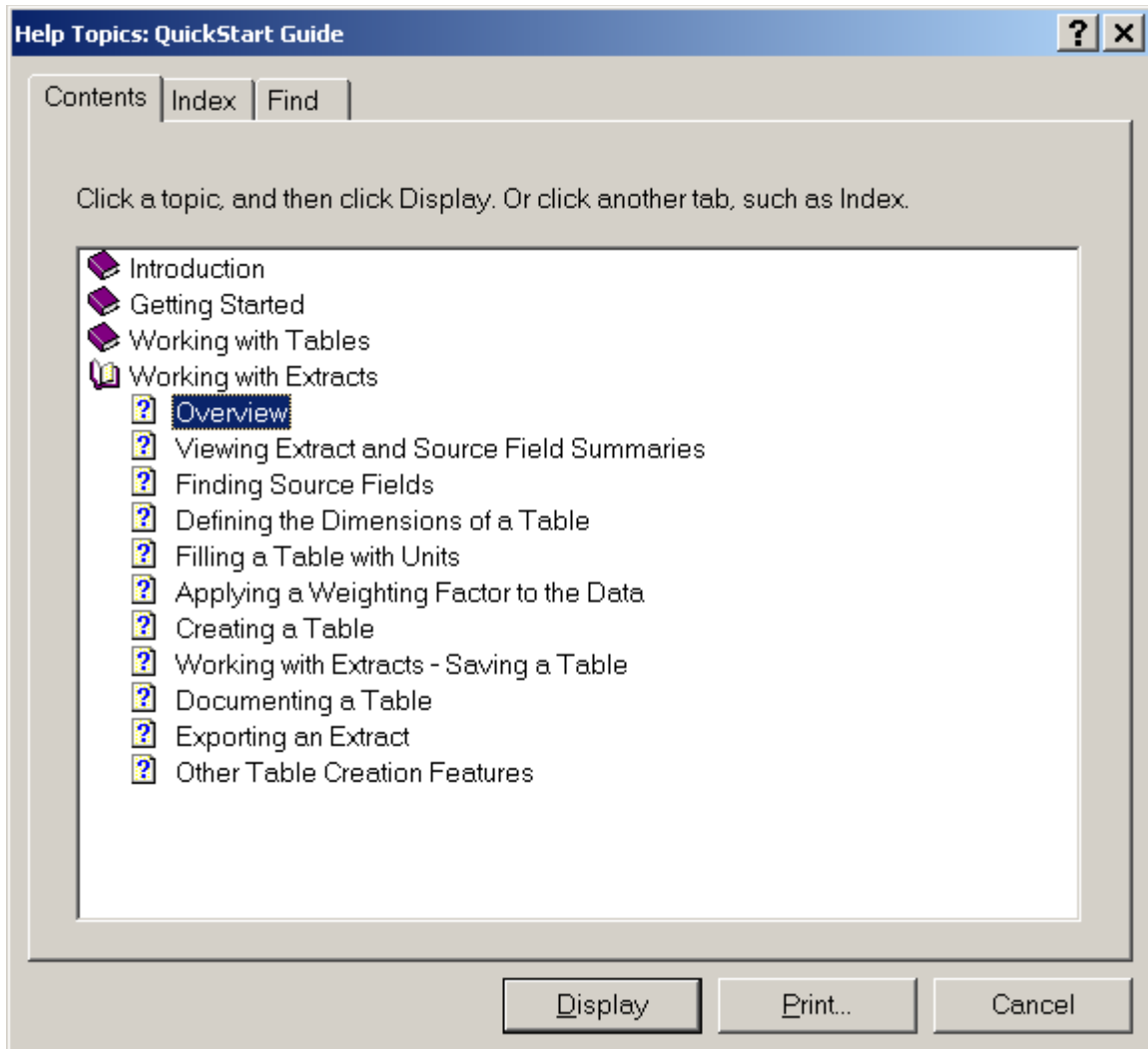
Please click on the “Using Beyond 20/20” Button.



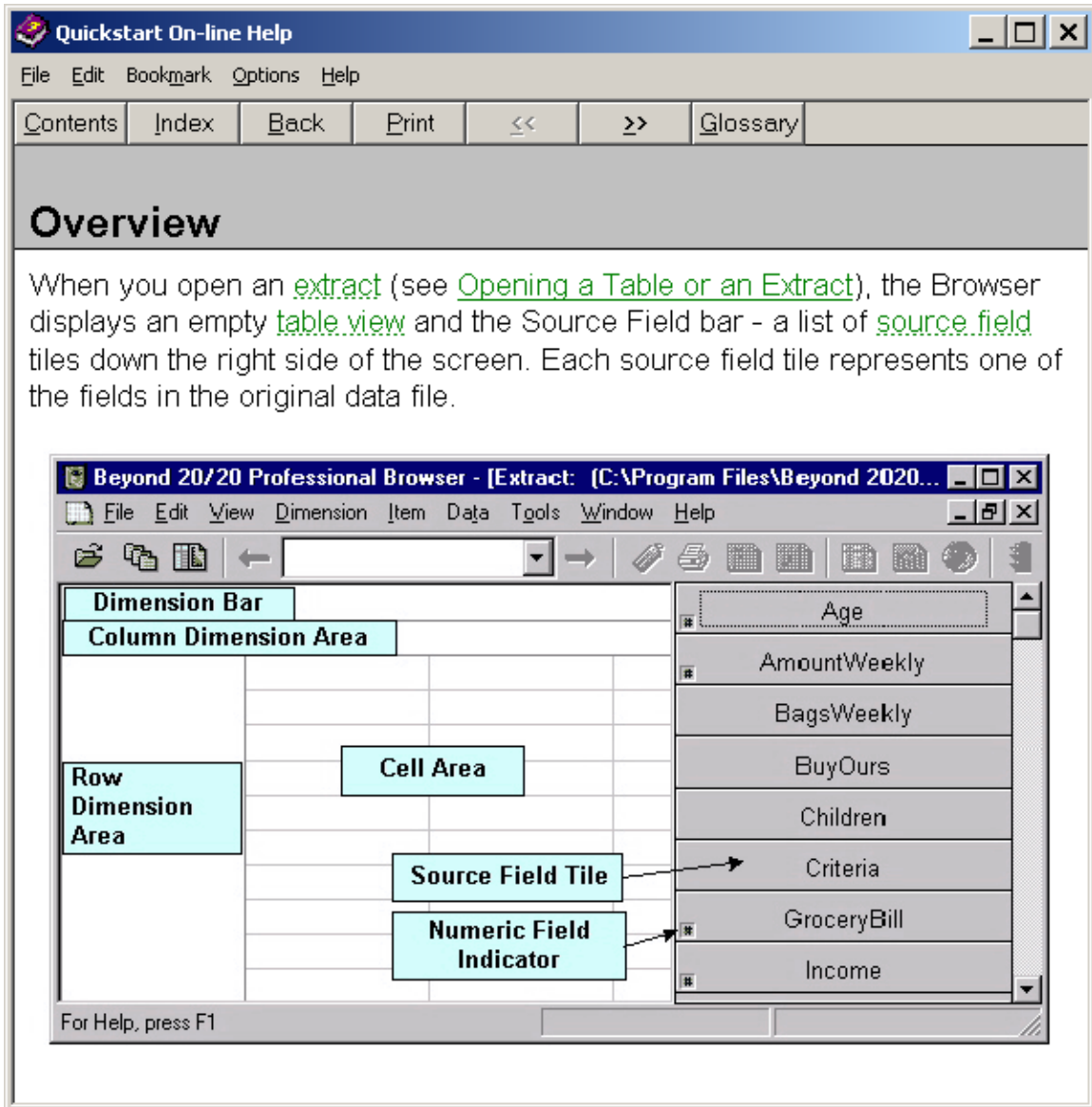
Please click on the “Quick Start Guide” selection.



Please click on the “Working with Extracts” book. Then click the “Open” button.



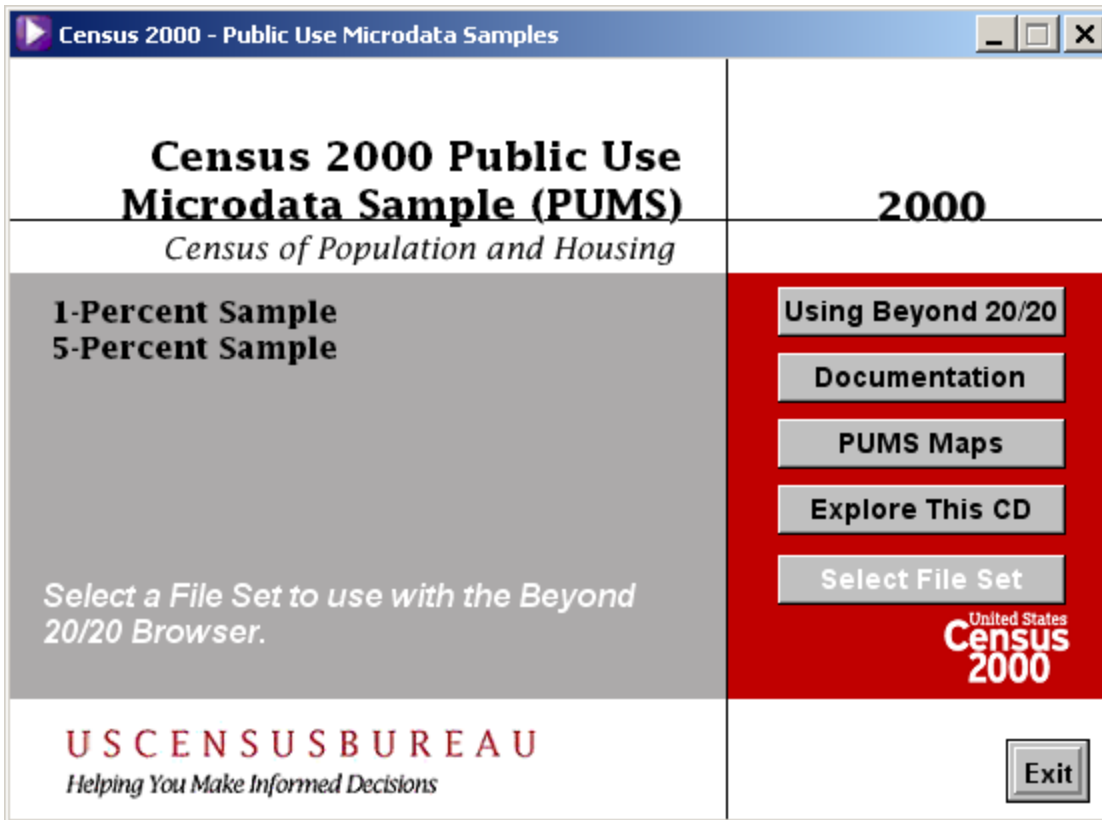
Please click on the “Overview” Topic. Then click on the “Display” Button.



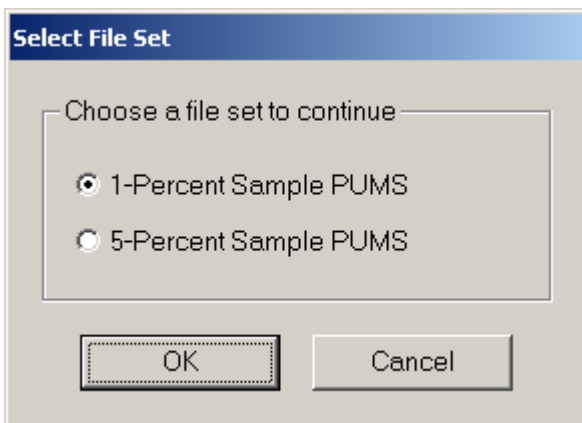
You can get even more information on the Beyond 20/20 Publication Browser by closing this window, and clicking on the "Browser Help" selection of the Using Beyond 20/20 Menu.

Please, close the On-Line Help windows.

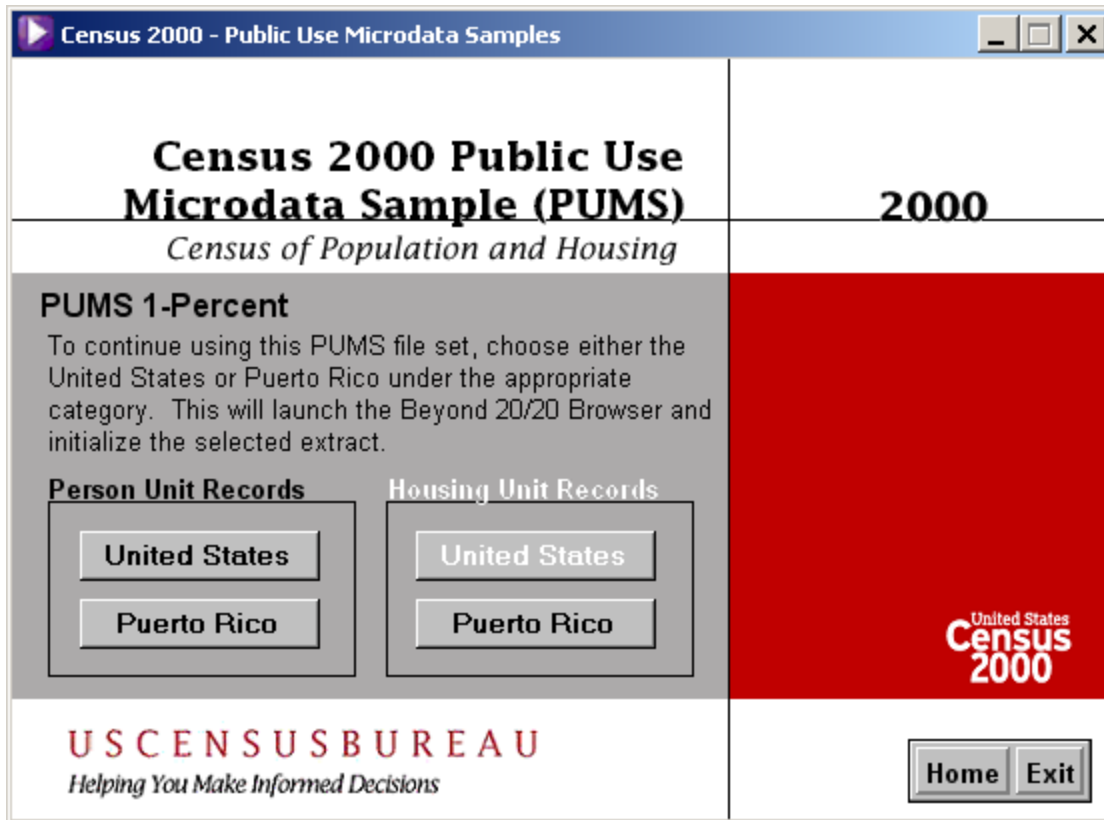
This is a good place to take a break!



Please click on the “Select File Set” button.



Please select the “1-Percent Sample PUMS” radio button. Then click on the “OK” button.



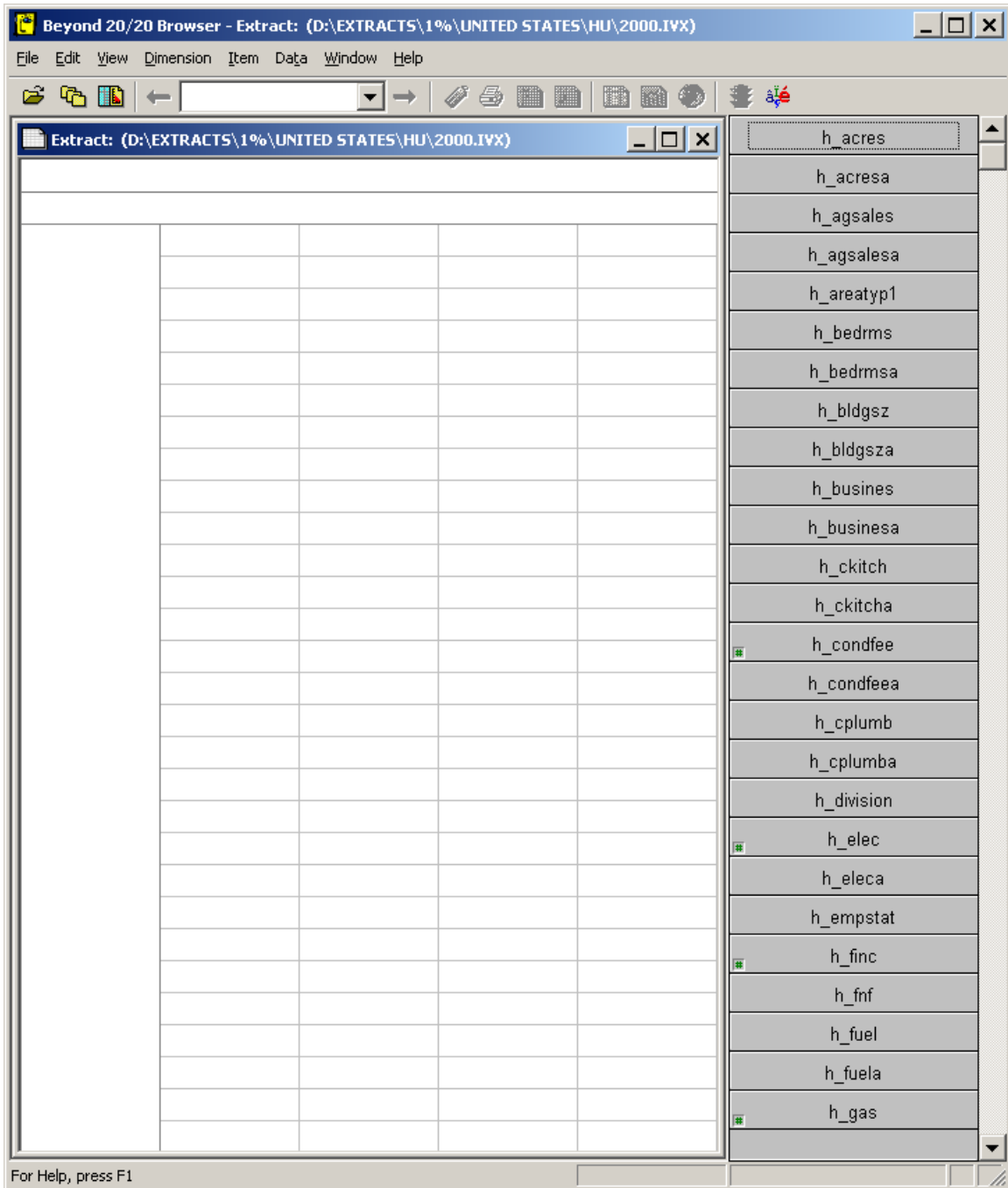
NOTE: The 1-percent sample was small enough to create a U.S summary in a Beyond 20/20 extract.

Please click on the “Housing Unit Records – United States” button.

NOTE: This will launch the Beyond 20/20 Publication Browser, using the PUMS 1-Percent U.S. Housing Unit data variables & records.

We will use this to show the basics of Table Building:

- Variable Directory – Source Field Summary, Notes, & Statistics.
- Table Dimensions – Page, Column, & Row (Stubs).
- Choosing a Geographic Variable.
- Replacing & Pivoting.
- Populating a Table with Data.
- Rudimentary Charting.
- Saving Options.



Please, right click on the “h_pumal” variable. Then click on the “Source Field Summary” selection.

Beyond 20/20 Browser - Extract: (D:\EXTRACTS\1%\UNITED STATES\HU\2000.IVX)

File Edit View Dimension Item Data Window Help

Extract: (D:\EXTRACTS\1%\UNITED STATES\HU\2000.IVX):2

Summary:

Title: Super Public Use Microdata Area Code (SuperPUMA)
File Name: 2000h_pu.ivd
Directory: D:\EXTRACTS\1%\UNITED STATES\HU\
Author: U.S. Census Bureau
Category: Housing Unit record variables
Keywords:

Notes:

PUMA1

Super Public Use Microdata Area Code (SuperPUMA)
 Designates area of 400,000 or more population

See [Super-PUMA list](#)

Statistics:

Last Update: 2003/12/08 15:53:38
File Size: 16,711 bytes
Number of Records: 1,236,882
Map File: No
Time Series: No
Missing Values: No
Number of Items: 532
Dimension Type: Normal
Source Field Type: Coded
Serial ID: 1070898698
Process ID: 1468

h_mrt1amt
 h_mrt1amta
 h_mrt2amt
 h_mrt2amta
 h_msacmsa1
 h_msapmsa1
 h_noc
 h_npf
 h_nrc
 h_oil
 h_oila
 h_p18
 h_p65
 h_paoc
 h_parc
 h_persons
 h_phone
 h_phonea
 h_psf
 h_puma1
 h_region
 h_rent
 h_renta
 h_rooms
 h_roomsa
 h_smoc
 h_smocapi
 h_smt
 h_state
 h_subsampl
 h_sval
 h_taxamt
 h_taxamta
 h_taxincl
 h_taxincla

For Help, press F1

ENG

Please, close the “Source Field Summary” inner window.

Then left click on the h_puma1 variable, drag it to, and drop it into the row dimension.

Beyond 20/20 Browser - Extract: (D:\EXTRACTS\1%\UNITED STATES\HU\2000.IVX)

File Edit View Dimension Item Data Window Help

h_puma1

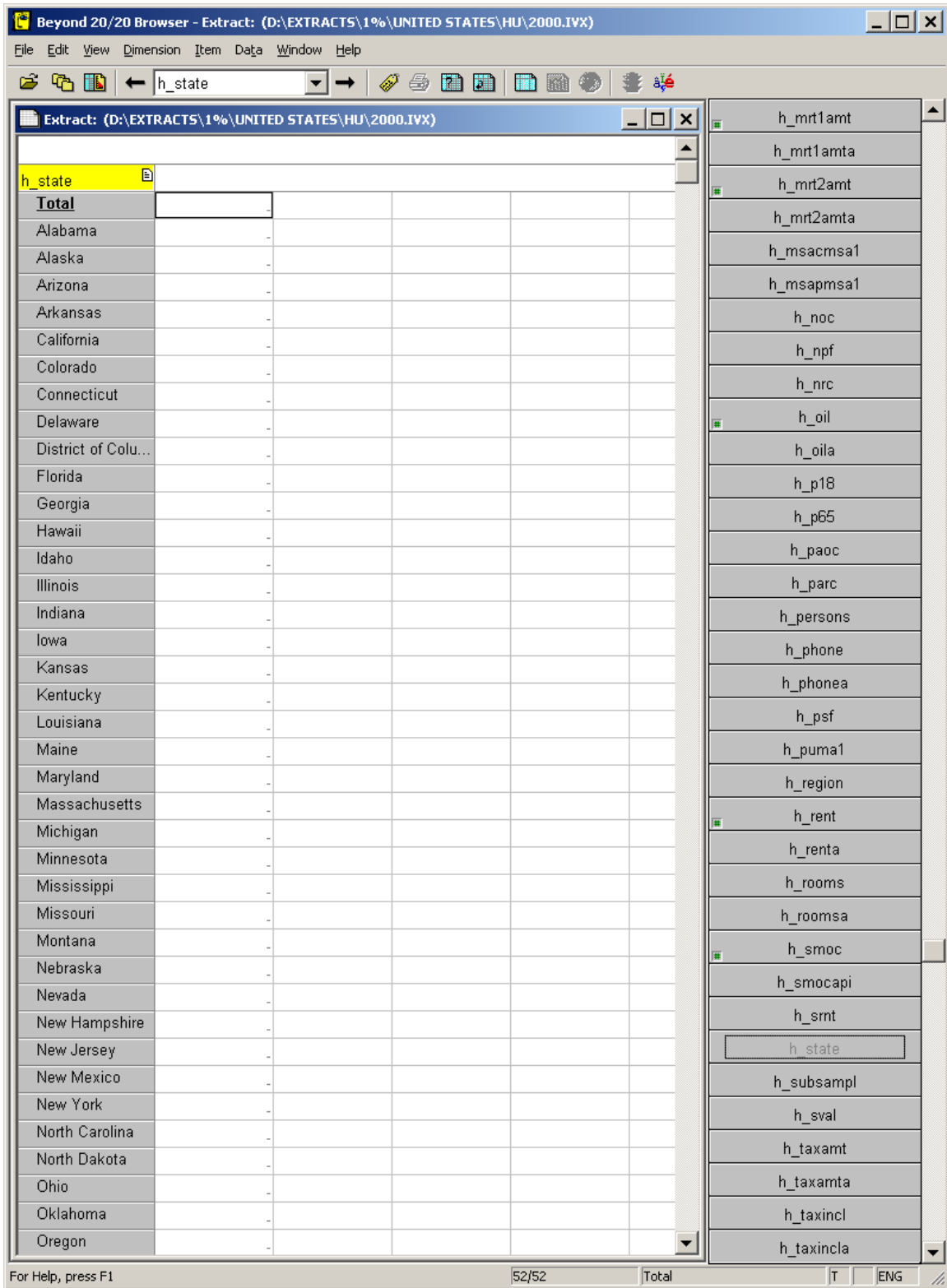
Extract: (D:\EXTRACTS\1%\UNITED STATES\HU\2000.IVX)

h_puma1	
Total	
01100	-
01200	-
01300	-
01400	-
01500	-
01600	-
01701	-
01702	-
02100	-
04100	-
04200	-
04301	-
04302	-
04303	-
04304	-
04305	-
04306	-
04401	-
04402	-
05100	-
05200	-
05300	-
05400	-
05500	-
06010	-
06020	-
06030	-
06040	-
06050	-
06060	-
06071	-
06072	-
06080	-
06090	-
06100	-
06110	-
06121	-
06122	-

- h_mrt1amt
- h_mrt1amta
- h_mrt2amt
- h_mrt2amta
- h_msacmsa1
- h_msapmsa1
- h_noc
- h_npf
- h_nrc
- h_oil
- h_oila
- h_p18
- h_p65
- h_paoc
- h_parc
- h_persons
- h_phone
- h_phonea
- h_psf
- h_puma1
- h_region
- h_rent
- h_renta
- h_rooms
- h_roomsa
- h_smoc
- h_smocapi
- h_smt
- h_state
- h_subsampl
- h_sval
- h_taxamt
- h_taxamta
- h_taxincl
- h_taxincla

For Help, press F1 533/533 Total T ENG

Please, replace geographical variables by left clicking on the h_state variable, dragging it to, and dropping it into the h_puma1 variable.



Then left click on the h_bedrms variable, drag it to, and drop it into the column dimension.

Beyond 20/20 Browser - Extract: (D:\EXTRACTS\1%\UNITED STATES\HU\2000.IVX)

File Edit View Dimension Item Data Window Help

h_bedrms

Extract: (D:\EXTRACTS\1%\UNITED STATES\HU\2000.IVX)

h_bedrms	Total	Not in universe (GQ)	No bedrooms	5 or more bedrooms
h_state				
Total				
Alabama				
Alaska				
Arizona				
Arkansas				
California				
Colorado				
Connecticut				
Delaware				
District of Colu...				
Florida				
Georgia				
Hawaii				
Idaho				
Illinois				
Indiana				
Iowa				
Kansas				
Kentucky				
Louisiana				
Maine				
Maryland				
Massachusetts				
Michigan				
Minnesota				
Mississippi				
Missouri				
Montana				
Nebraska				
Nevada				
New Hampshire				
New Jersey				
New Mexico				
New York				
North Carolina				
North Dakota				
Ohio				

- h_acres
- h_acresa
- h_agsales
- h_agsalesa
- h_areatyp1
- h_bedrms
- h_bedrmsa
- h_bldgsz
- h_bldgsza
- h_busines
- h_businesa
- h_ckitch
- h_ckitcha
- h_condfee
- h_condfeea
- h_cplumb
- h_cplumba
- h_division
- h_elec
- h_eleca
- h_empstat
- h_finc
- h_fnf
- h_fuel
- h_fuela
- h_gas
- h_gasa
- h_grapi
- h_grent
- h_haug
- h_hhl
- h_hht
- h_hinc
- h_hsub
- h_hweight

For Help, press F1 8/8 Total T ENG

Please, Pivot h_state with h_bedrms by left clicking on either variable, dragging it to, and dropping it into the other variable.

Beyond 20/20 Browser - Extract: (D:\EXTRACTS\1%\UNITED STATES\HU\2000.IVX)

File Edit View Dimension Item Data Window Help

h_bedrms

Extract: (D:\EXTRACTS\1%\UNITED STATES\HU\2000.IVX)

h_state	Total	Alabama	Alaska	Arizona	Ark
h_bedrms					
Total					
Not in universe...	-	-	-	-	-
No bedrooms	-	-	-	-	-
5 or more bedr...	-	-	-	-	-
1	-	-	-	-	-
2	-	-	-	-	-
3	-	-	-	-	-
4	-	-	-	-	-

- h_acres
- h_acresa
- h_agsales
- h_agsalesa
- h_areatyp1
- h_bedrms
- h_bedrmsa
- h_bldgsz
- h_bldgsza
- h_busines
- h_businesa
- h_ckitch
- h_ckitcha
- h_condfee
- h_condfeea
- h_cplumb
- h_cplumba
- h_division
- h_elec
- h_eleca
- h_empstat
- h_finc
- h_fnf
- h_fuel
- h_fuela
- h_gas
- h_gasa
- h_grapi
- h_grent
- h_haug
- h_hhl
- h_hht
- h_hinc
- h_hsub
- h_hweight

For Help, press F1 8/8 Total T ENG

Please, pivot the variables back to their original positions.

Please, load data into the table by clicking on the “GO” button.

Beyond 20/20 Browser - h_state by h_bedrms(2000)

File Edit View Dimension Item Data Window Help

h_state

h_state by h_bedrms(2000)

h_bedrms	Total	Not in universe (GQ)	No bedrooms	5 or more bedrooms	1	2
h_state						
Total	115,904,641	0	3,412,560	3,602,440	15,550,818	32,826,892
Alabama	1,963,448	0	22,818	39,418	157,549	548,948
Alaska	261,389	0	17,978	9,711	43,687	72,871
Arizona	2,189,281	0	91,820	51,298	364,284	660,592
Arkansas	1,173,605	0	14,877	15,638	107,492	364,023
California	12,217,313	0	850,328	335,812	2,215,860	3,451,892
Colorado	1,808,330	0	50,168	97,260	246,767	480,440
Connecticut	1,386,039	0	27,034	47,362	188,945	393,155
Delaware	343,123	0	3,101	11,479	31,716	80,019
District of Colum...	274,971	0	37,909	9,794	84,284	66,042
Florida	7,303,716	0	248,864	118,579	1,037,579	2,671,667
Georgia	3,282,330	0	46,995	115,359	325,799	859,918
Hawaii	460,544	0	40,104	22,533	88,916	117,160
Idaho	527,912	0	12,154	27,477	57,444	144,038
Illinois	4,885,588	0	138,795	153,899	662,977	1,446,304
Indiana	2,531,689	0	30,689	64,992	260,366	724,169
Iowa	1,231,936	0	20,353	37,703	129,903	359,064
Kansas	1,131,091	0	18,332	44,985	129,435	327,964
Kentucky	1,750,944	0	21,323	44,631	166,923	529,756
Louisiana	1,847,377	0	30,392	33,207	223,844	524,962
Maine	651,752	0	13,766	26,610	76,375	213,548
Maryland	2,146,221	0	43,131	110,527	257,127	488,961
Massachusetts	2,622,935	0	64,275	103,249	396,096	737,757
Michigan	4,233,707	0	71,996	115,657	450,447	1,185,264
Minnesota	2,065,465	0	49,792	85,517	266,484	566,622
Mississippi	1,162,028	0	18,262	22,529	99,173	310,276
Missouri	2,441,456	0	39,981	68,480	284,097	734,327
Montana	412,894	0	13,263	25,019	52,694	111,153
Nebraska	722,261	0	9,354	31,782	91,590	207,644
Nevada	827,116	0	39,613	21,900	129,030	243,425
New Hampshire	547,217	0	7,637	17,250	61,388	179,868
New Jersey	3,310,587	0	77,128	160,479	531,341	868,597
New Mexico	780,330	0	32,060	12,895	105,039	212,656
New York	7,679,205	0	399,553	316,855	1,601,625	2,033,684
North Carolina	3,524,458	0	35,575	79,940	292,245	1,040,421
North Dakota	289,735	0	5,557	16,186	32,957	87,511
Ohio	4,781,667	0	56,798	120,230	496,109	1,302,359

For Help, press F1 52/52 Total T ENG

NOTE: Variables cannot be added once data has been loaded into a table. However, the pivoting function is still available.

Please, select each column value, except “total”, by clicking one at a time while holding the *CTRL* key. Then, while still holding the *CTRL* key, click on the “total” value of the row variable.

Beyond 20/20 Browser - h_state by h_bedrms(2000)

File Edit View Dimension Item Data Window Help

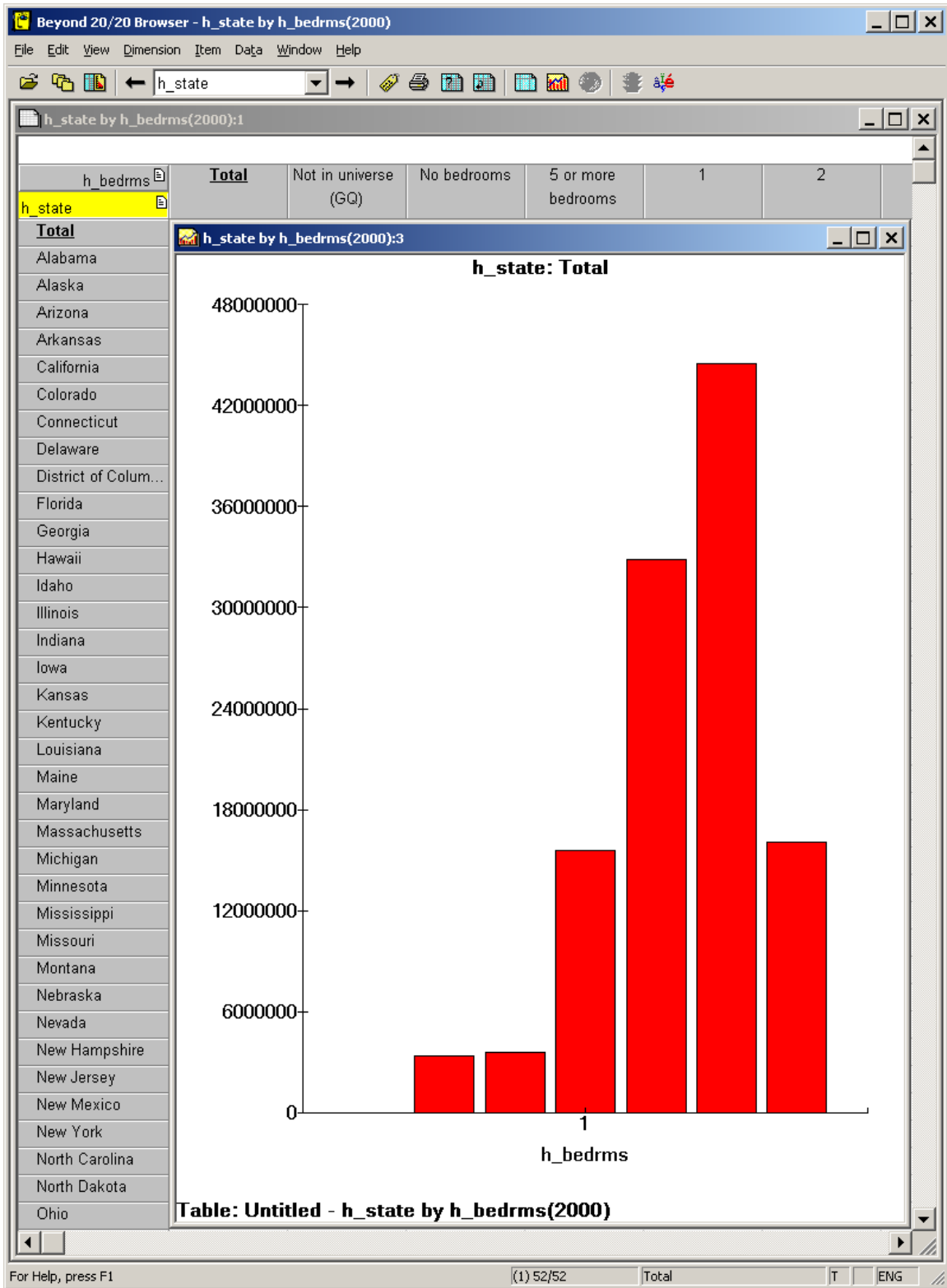
h_state

h_state by h_bedrms(2000)

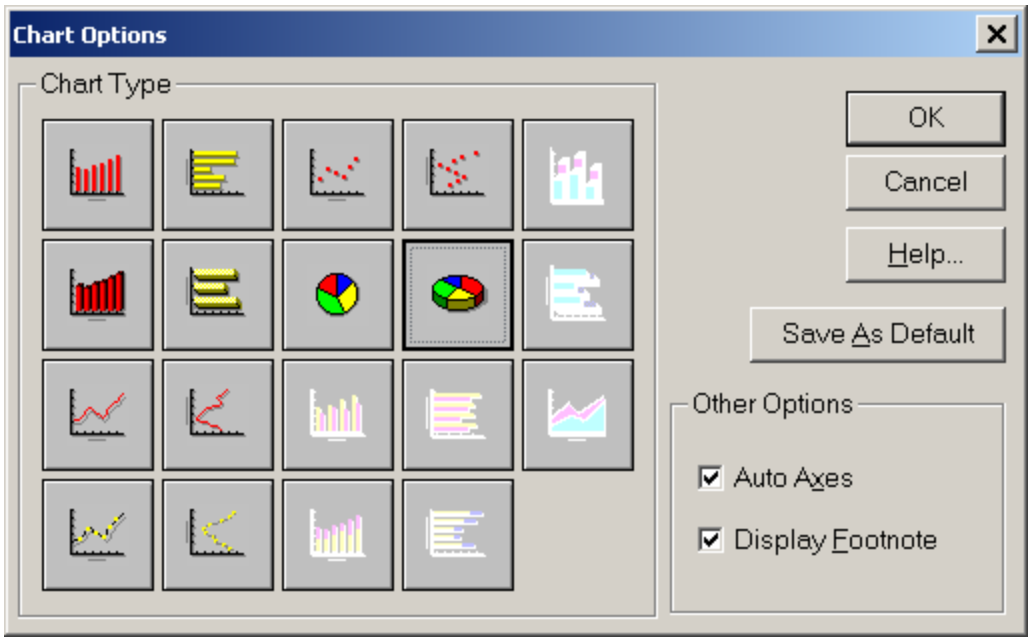
h_bedrms	Total	Not in universe (GQ)	No bedrooms	5 or more bedrooms	1	2	
h_state							
Total	115,904,641	0	3,412,560	3,602,440	15,550,818	32,826,892	
Alabama	1,963,448	0	22,818	39,418	157,549	548,948	
Alaska	261,389	0	17,978	9,711	43,687	72,871	
Arizona	2,189,281	0	91,820	51,298	364,284	660,592	
Arkansas	1,173,605	0	14,877	15,638	107,492	364,023	
California	12,217,313	0	850,328	335,812	2,215,860	3,451,892	
Colorado	1,808,330	0	50,168	97,260	246,767	480,440	
Connecticut	1,386,039	0	27,034	47,362	188,945	393,155	
Delaware	343,123	0	3,101	11,479	31,716	80,019	
District of Colum...	274,971	0	37,909	9,794	84,284	66,042	
Florida	7,303,716	0	248,864	118,579	1,037,579	2,671,667	
Georgia	3,282,330	0	46,995	115,359	325,799	859,918	
Hawaii	460,544	0	40,104	22,533	88,916	117,160	
Idaho	527,912	0	12,154	27,477	57,444	144,038	
Illinois	4,885,588	0	138,795	153,899	662,977	1,446,304	
Indiana	2,531,689	0	30,689	64,992	260,366	724,169	
Iowa	1,231,936	0	20,353	37,703	129,903	359,064	
Kansas	1,131,091	0	18,332	44,985	129,435	327,964	
Kentucky	1,750,944	0	21,323	44,631	166,923	529,756	
Louisiana	1,847,377	0	30,392	33,207	223,844	524,962	
Maine	651,752	0	13,766	26,610	76,375	213,548	
Maryland	2,146,221	0	43,131	110,527	257,127	488,961	
Massachusetts	2,622,935	0	64,275	103,249	396,096	737,757	
Michigan	4,233,707	0	71,996	115,657	450,447	1,185,264	
Minnesota	2,065,465	0	49,792	85,517	266,484	566,622	
Mississippi	1,162,028	0	18,262	22,529	99,173	310,276	
Missouri	2,441,456	0	39,981	68,480	284,097	734,327	
Montana	412,894	0	13,263	25,019	52,694	111,153	
Nebraska	722,261	0	9,354	31,782	91,590	207,644	
Nevada	827,116	0	39,613	21,900	129,030	243,425	
New Hampshire	547,217	0	7,637	17,250	61,388	179,868	
New Jersey	3,310,587	0	77,128	160,479	531,341	868,597	
New Mexico	780,330	0	32,060	12,895	105,039	212,656	
New York	7,679,205	0	399,553	316,855	1,601,625	2,033,684	
North Carolina	3,524,458	0	35,575	79,940	292,245	1,040,421	
North Dakota	289,735	0	5,557	16,186	32,957	87,511	
Ohio	4,781,667	0	56,798	120,230	496,109	1,302,359	

For Help, press F1 (1) 52/52 Total T ENG

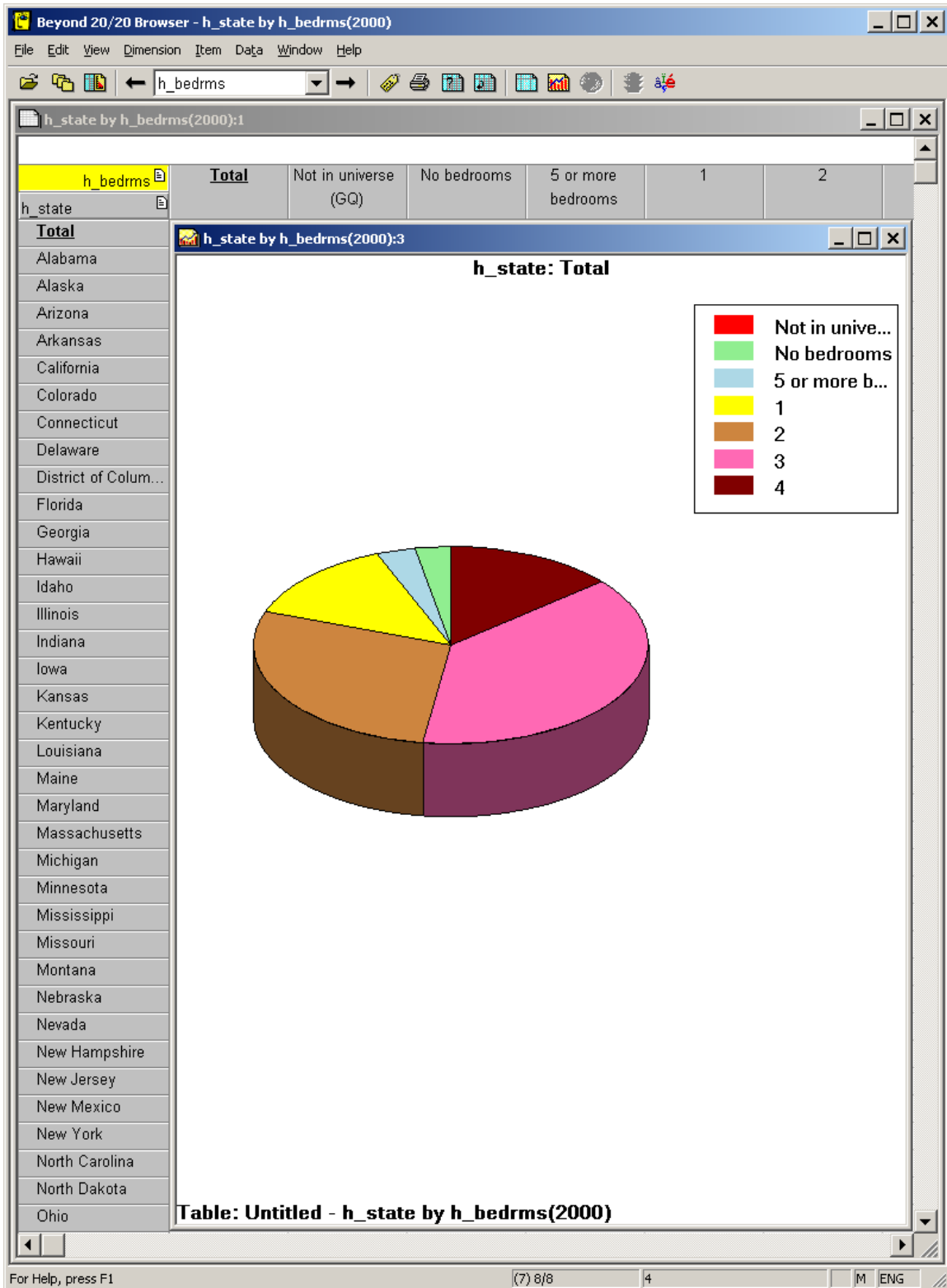
Please, click on the View, Chart selection off of the application menu.



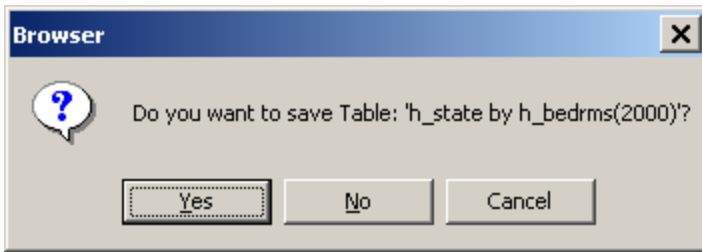
Please, click on the View, Chart Options selection off of the application menu.



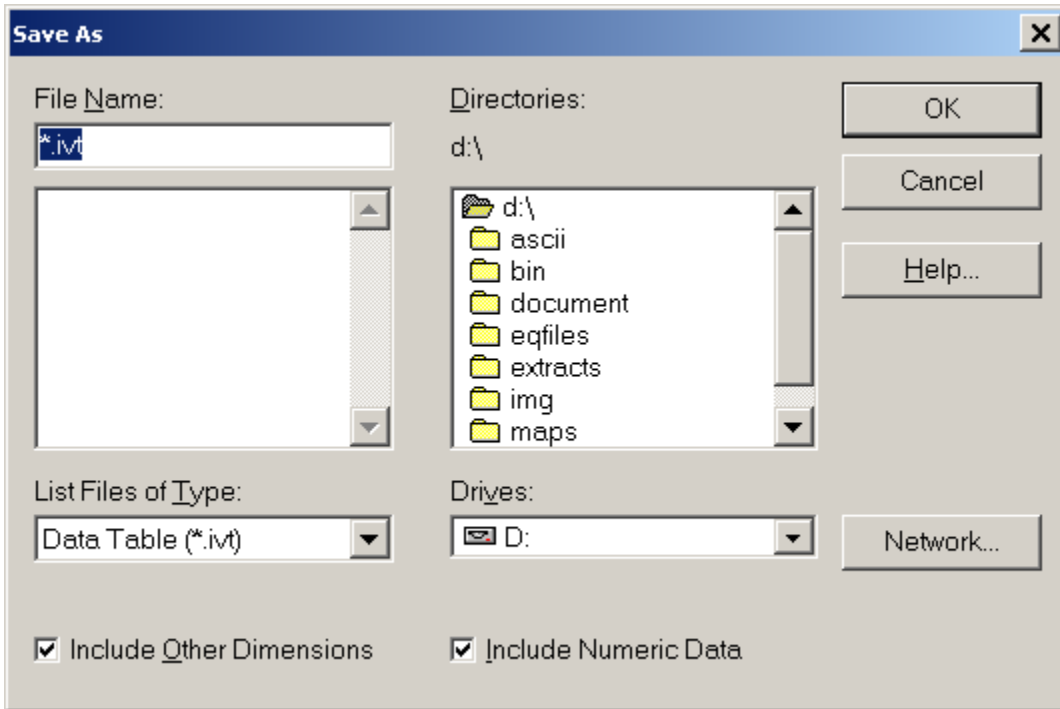
Please select any of the other chart type buttons. Then click on the “OK” button.



Please, close the “View Chart” inner window. Then close the “Data Loaded Table” inner window. The Beyond 20/20 Publication Browser will ask if you want to save the table.

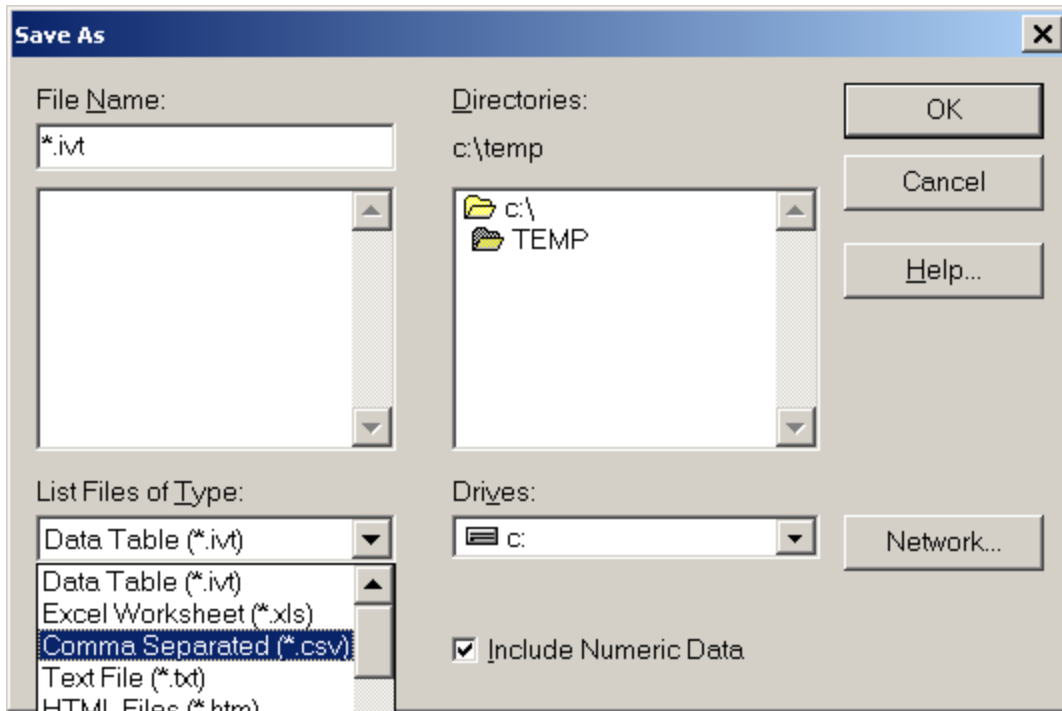


Please, click on the “Yes” button.

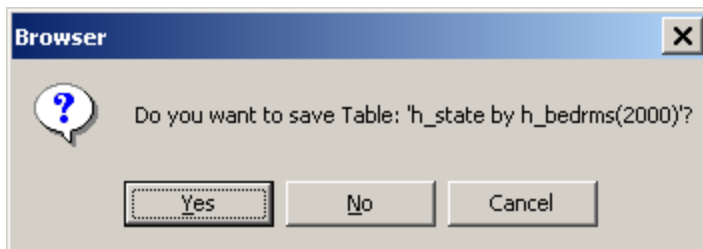


NOTE: Since Drives: D: is a DVD it cannot be written on. You must save to another drive.

Please, click on the arrow for “List Files of Type:” and note all of the possibilities.

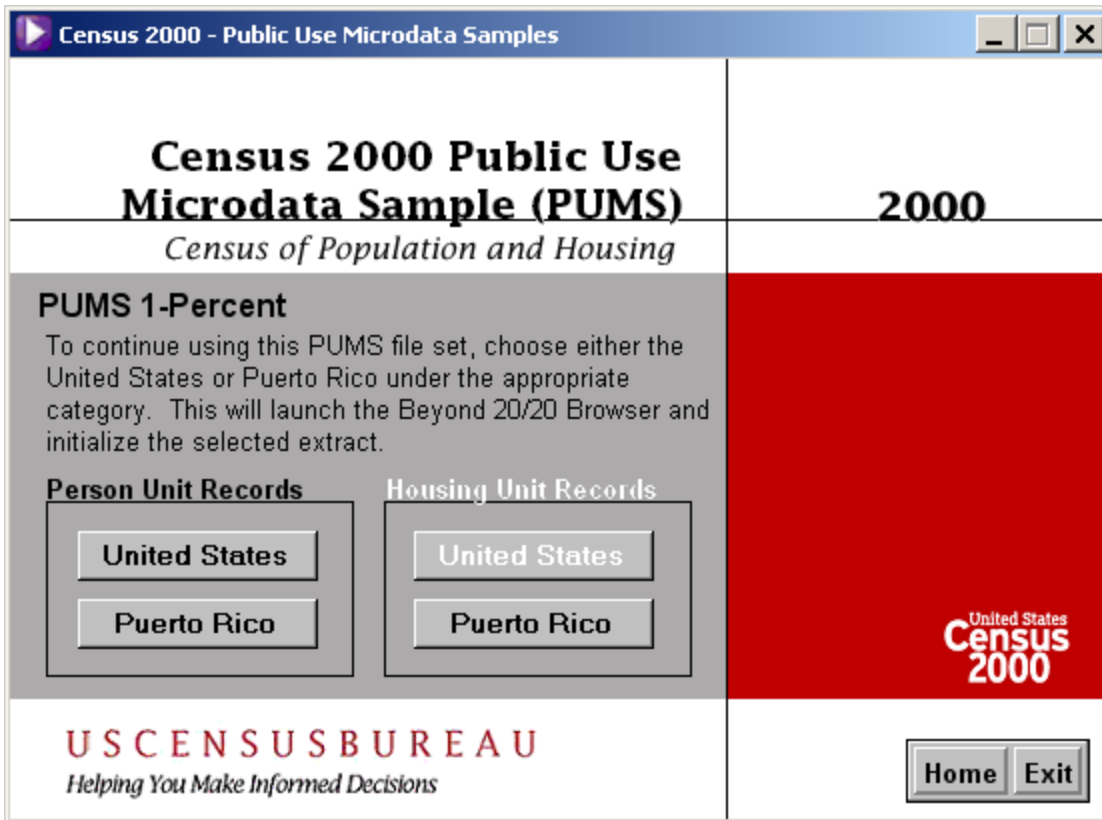


Please, click on the “Cancel” button to stop this request. Then close the “Data Loaded Table” inner window. Once again the Beyond 20/20 Publication Browser will ask if you want to save the table.

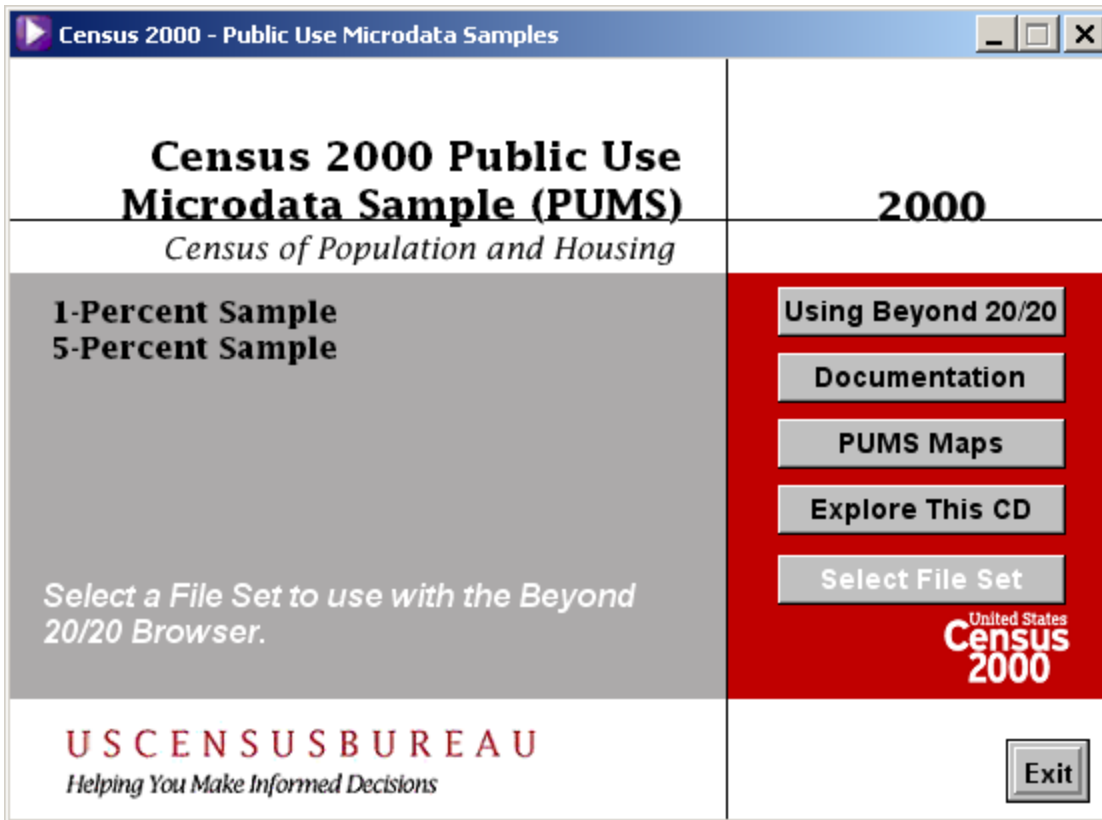


This time, click on the “No” button.

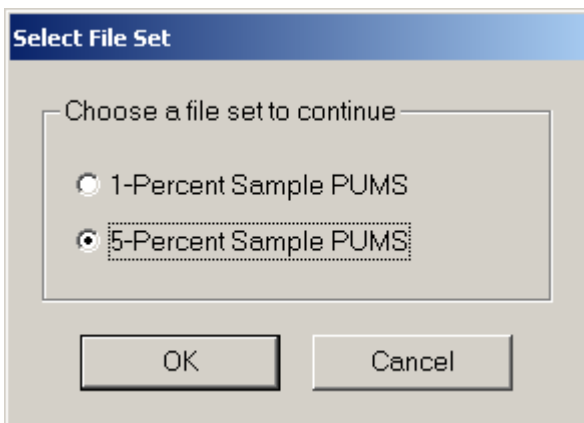
NOTE: To launch another data set you must close the Beyond 20/20 Publication Browser. This will return you to the PUMS 1-Percent file set menu.



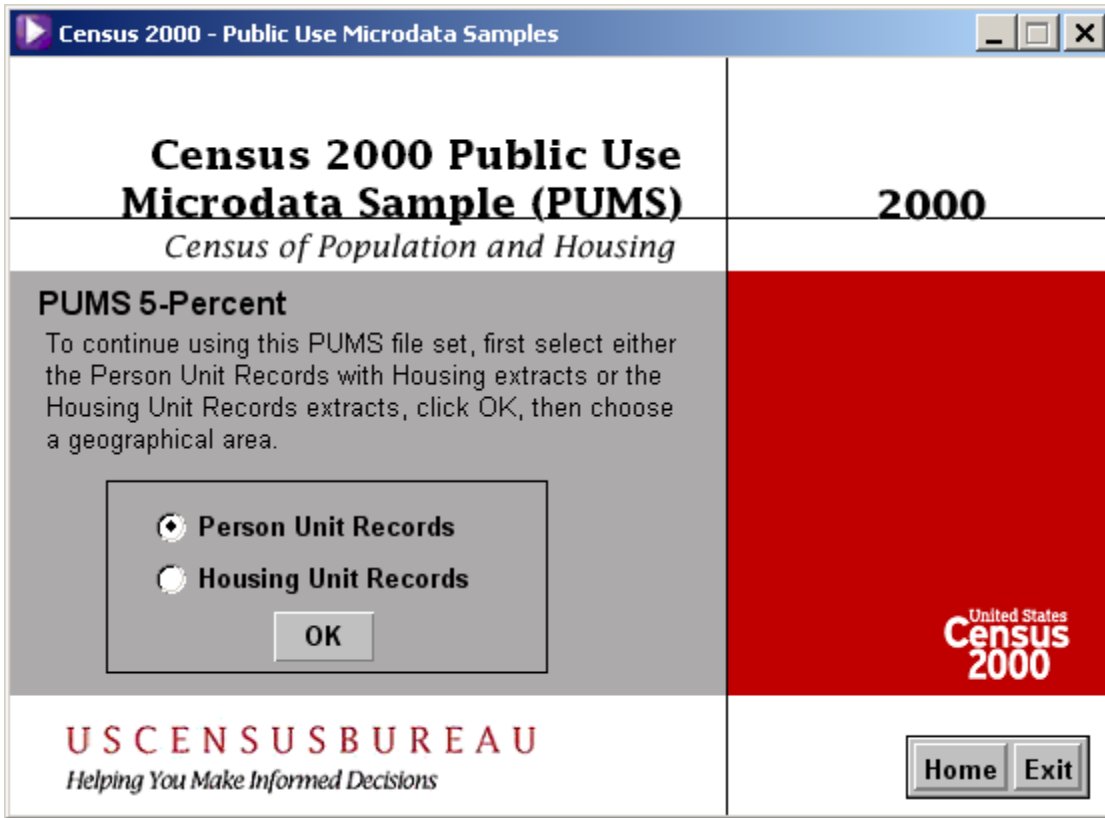
Please click on the “Home” button.



Please click on the “Select File Set” button.

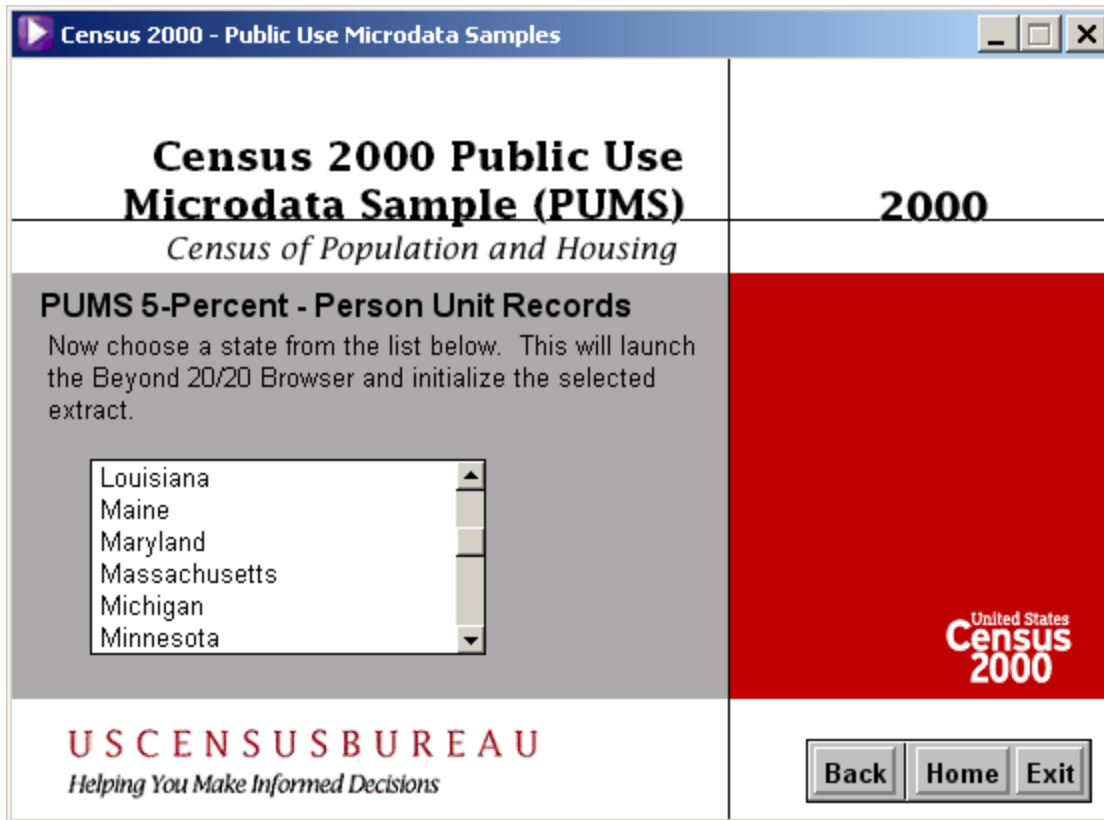


Please select the “5-Percent Sample PUMS” radio button. Then click on the “OK” button.



NOTE: The 5-percent sample was too large to create a U.S summary in a Beyond 20/20 extract. This means there are only state summaries.

Please select the “PUMS 5-Percent Person Unit Records” radio button. Then click on the “OK” button.

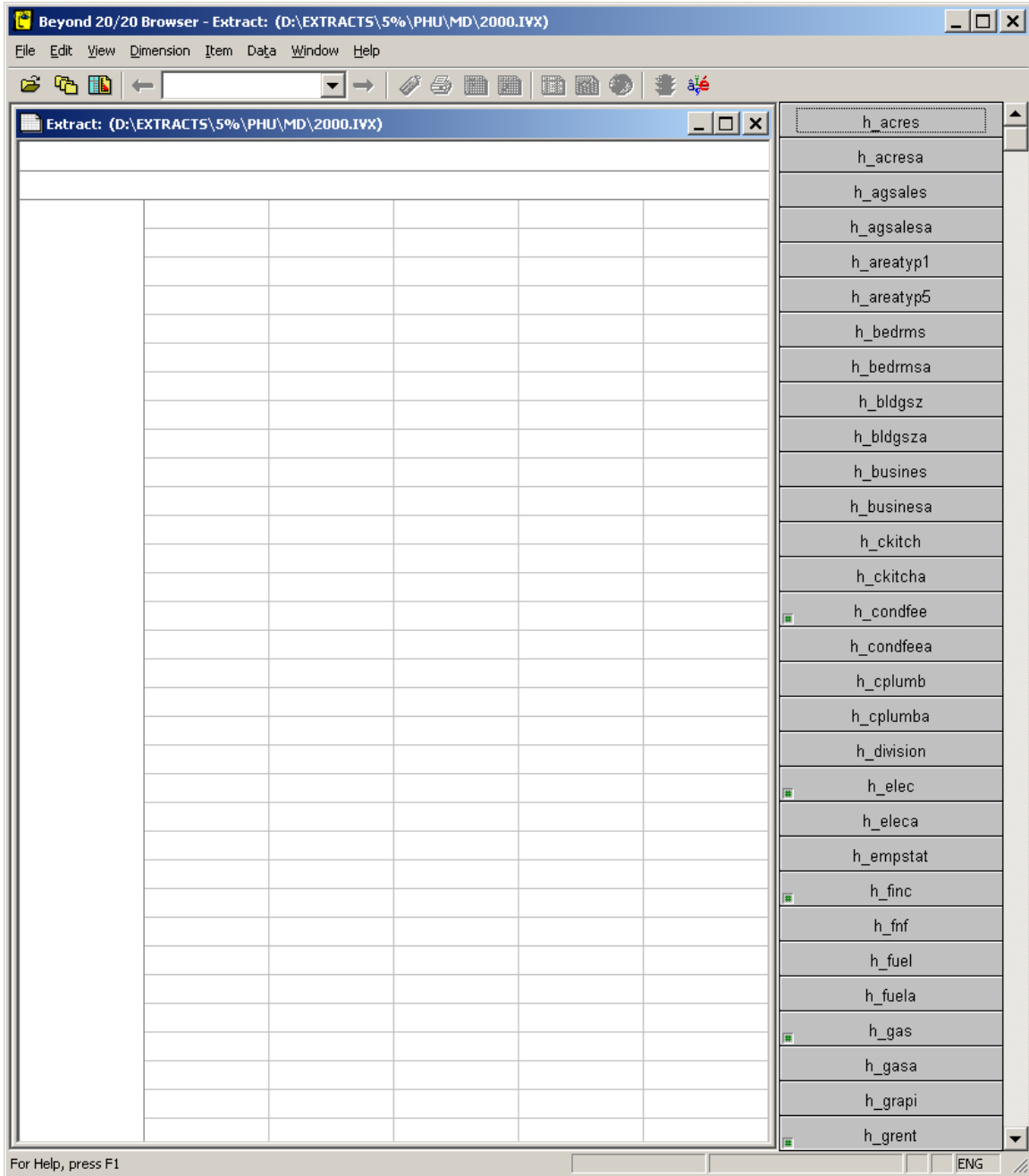


Please, click on the state data set you would like to use. (Ex. Maryland)

NOTE: This will launch the Beyond 20/20 Publication Browser, using the PUMS 5-Percent - Person Unit data variables & records.

We will use this to show Advanced Table Building:

- Multiple Table Dimensions (Cross Tabulating).
- Multiple Valued Variables (Large Cartesian Product).
- Multiple Nesting.
- Using a Numeric Variable for Rudimentary Statistics.
- Variable Recoding.



Please, left click on the h_puma5 variable, drag it to, and drop it into the Page dimension. Then left click on the p_race1 variable, drag it to, and drop it into the Column dimension. Then left click on the p_pob5 variable, drag it to, and drop it into the Row dimension.

Beyond 20/20 Browser - Extract: (D:\EXTRACTS\5%\PHU\MD\2000.IVX)

File Edit View Dimension Item Data Window Help

← p_pob5 →

Extract: (D:\EXTRACTS\5%\PHU\MD\2000.IVX)

h_puma5	Total	White alone	Black or African American alone	American Indian alone	Alaska N...
p_race1	Total				
p_pob5	Total				
001 Alabama					
002 Alaska					
004 Arizona					
005 Arkansas					
006 California					
008 Colorado					
009 Connecticut					
010 Delaware					
011 District of ...					
012 Florida					
013 Georgia					
015 Hawaii					
016 Idaho					
017 Illinois					
018 Indiana					
019 Iowa					
020 Kansas					
021 Kentucky					
022 Louisiana					
023 Maine					
024 Maryland					
025 Massachu...					
026 Michigan					
027 Minnesota					
028 Mississippi					
029 Missouri					
030 Montana					
031 Nebraska					
032 Nevada					
033 New Ham...					

For Help, press F1

325/325 Total T ENG

p_paocf
 p_paug
 p_physcl
 p_physcla
 p_pob5
 p_poba
 p_poverty
 p_powarea1
 p_powarea5
 p_powcma1
 p_powcma5
 p_powpma1
 p_powpma5
 p_powpuma1
 p_powpuma5
 p_powst5
 p_powsta
 p_pweight
 p_race1
 p_race2
 p_race3
 p_racea
 p_rc
 p_recall
 p_relate
 p_relatea
 p_rspnsbl
 p_rspnsbla
 p_sensory
 p_sensorya

Then left click on the p_sex variable, drag it to, and nest it within the p_race1 variable that is currently located in the Column dimension.

Then left click on the p_ancfrst5 variable, drag it to, and nest it within the p_pob5 variable that is currently located in the Row dimension.

h_puma5: Total

p_race1		Total	Male	Female	White...
p_sex		Total			To
p_ancfrst5	Total	-	-	-	-
	001 Alabama	-	-	-	-
	002 Alaska	-	-	-	-
	004 Arizona	-	-	-	-
	005 Arkansas	-	-	-	-
	006 California	-	-	-	-
	008 Colorado	-	-	-	-
	009 Connecticut	-	-	-	-
	010 Delaware	-	-	-	-

For Help, press F1 | 10/10 | Total | T | ENG

NOTE: You can use Pivoting to gain a more aesthetic looking table.

h_puma5: Total

p_race1		p_ancfrst5		p_pob5		Total	Male	Female
p_sex		Total		Total		-	-	-
p_sex		001 Alabama		001 Alabama		-	-	-
p_sex		002 Alaska		002 Alaska		-	-	-
p_sex		004 Arizona		004 Arizona		-	-	-
p_sex		005 Arkansas		005 Arkansas		-	-	-
p_sex		006 California		006 California		-	-	-
p_sex		008 Colorado		008 Colorado		-	-	-
p_sex		009 Connecticut		009 Connecticut		-	-	-
p_sex		010 Delaware		010 Delaware		-	-	-
p_sex		011 District of ...		011 District of ...		-	-	-

For Help, press F1 | 10/10 | Total | T | ENG

Please, left click on the p_inctot variable, drag it to, and drop it into the Cell Area.

Beyond 20/20 Browser - Extract: (D:\EXTRACTS\5%\PHU\MD\2000.IVX)

File Edit View Dimension Item Data Window Help

← p_race1 →

Extract: (D:\EXTRACTS\5%\PHU\MD\2000.IVX)

h_puma5			Total	Male	Female
p_race1	p_ancrst5	p_pob5	Total	Male	Female
		Total	-	-	-
		001 Alabama	-	-	-
		002 Alaska	-	-	-
		004 Arizona	-	-	-
		005 Arkansas	-	-	-
		006 California	-	-	-
		008 Colorado	-	-	-
		009 Connecticut	-	-	-
		010 Delaware	-	-	-
		011 District of ...	-	-	-

For Help, press F1 | 10/10 | Total | T | ENG

Edit Unit Item

Based on Field: p_inctot

Item Name: Avg(p_inctot)

Calculated As: Average

- Count
- Maximum
- Minimum
- Non-Missing Count
- Sum

OK
Cancel
Help...

Please, select the statistical calculation you would like to perform on the numeric variable (ex. Average). Then click on the “OK” button.

Beyond 20/20 Browser - Extract: (D:\EXTRACTS\5%\PHU\MD\2000.IVX)

File Edit View Dimension Item Data Window Help

← Units →

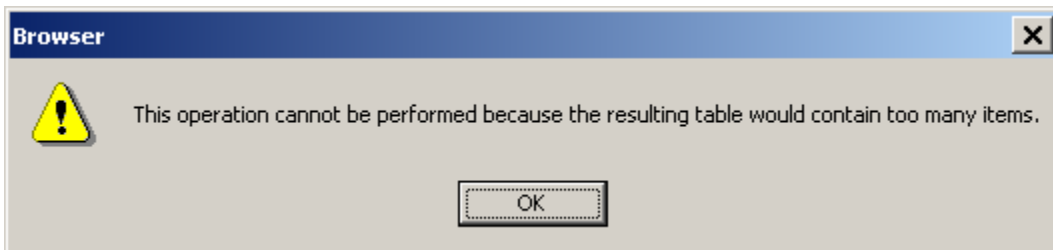
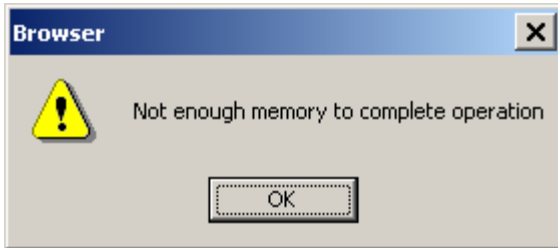
Extract: (D:\EXTRACTS\5%\PHU\MD\2000.IVX)

Units: Avg(p_inctot)			Total	Male	Female
p_race1	p_ancrst5	p_pob5	Total	Male	Female
		Total	-	-	-
		001 Alabama	-	-	-
		002 Alaska	-	-	-
		004 Arizona	-	-	-
		005 Arkansas	-	-	-
		006 California	-	-	-
		008 Colorado	-	-	-
		009 Connecticut	-	-	-
		010 Delaware	-	-	-
		011 District of ...	-	-	-

For Help, press F1 | 1/1 | Avg(p_inctot) | T | ENG

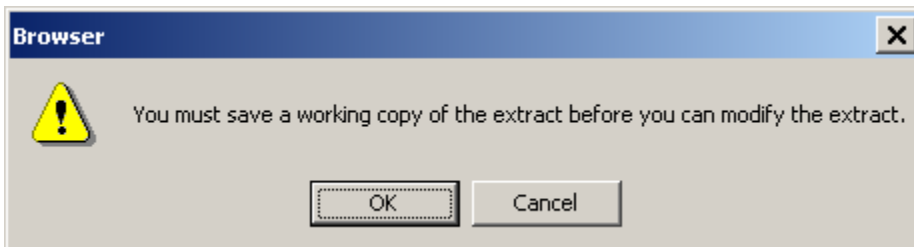
Please, load data into the table by clicking on the “GO” button.

NOTE: Due to the complexity of a table you might receive one of the following warnings.



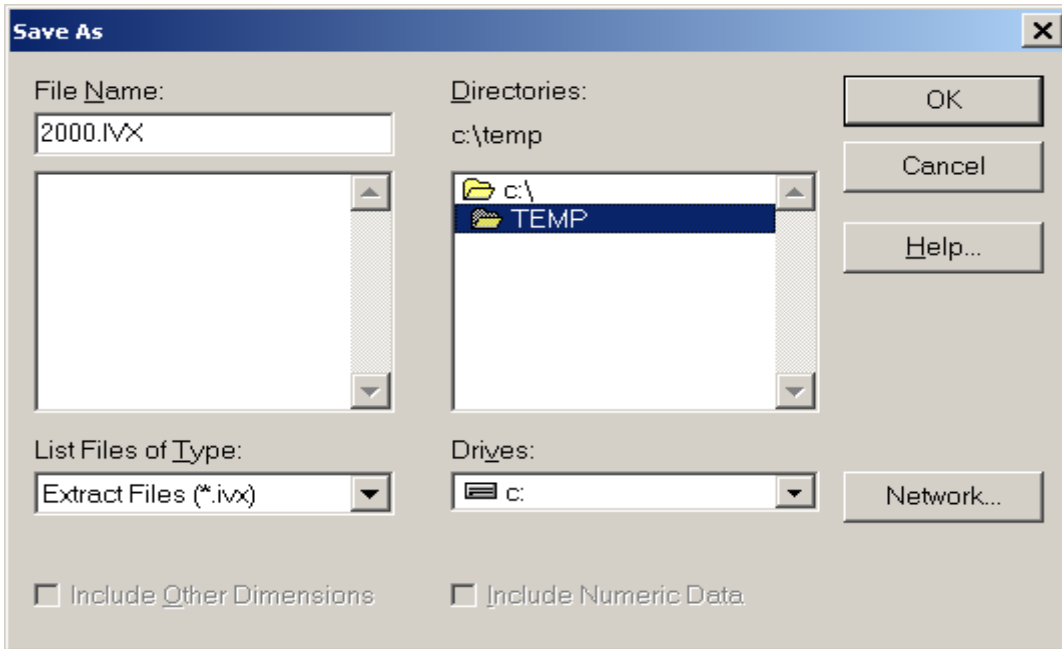
This would be a good time to Recode one or more of your variables (ex. p_pob5).

Please, left click on the p_pob5 variable, drag it to, and return it to the Variable Listing. Then, right click on the “p_pob5” variable, and click on the “Define Recode” selection.



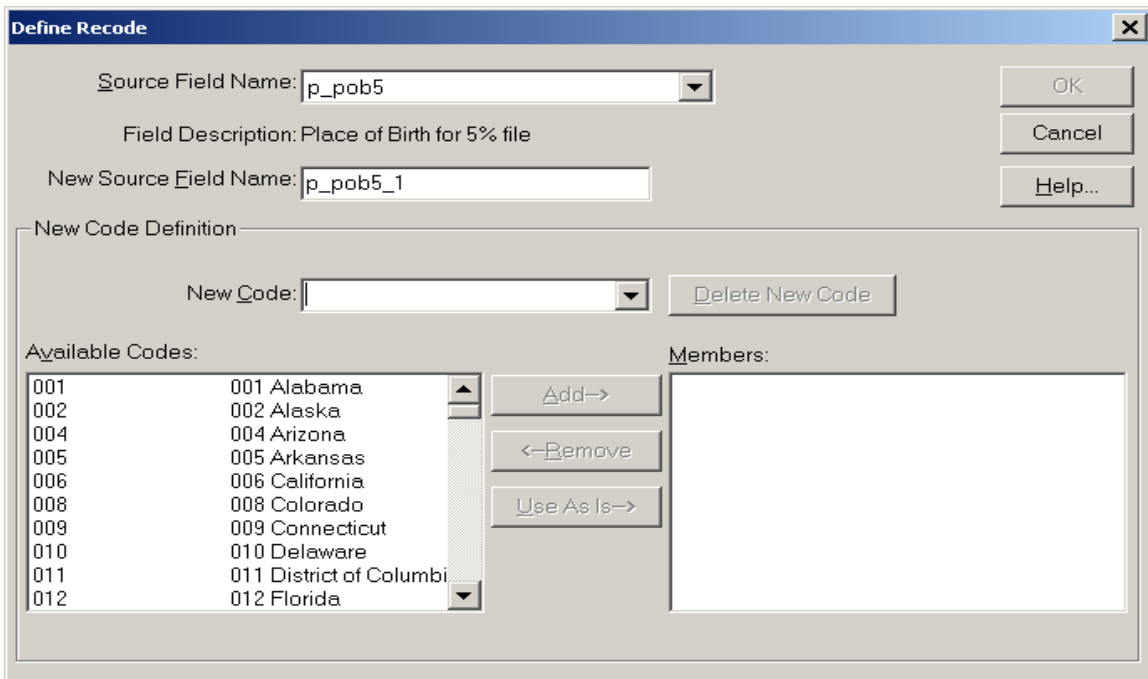
NOTE: To create a recode you must work with a copy of the extract.

Please, click on the “OK” button.



NOTE: Since Drives: D: is a DVD it cannot be written on. You must save to another drive.

Please, choose your local C: drive and a temporary subdirectory. Then click on the “OK” button.



Please, enter a Value for your New Code (ex. Native Born). Then select 001 – 096 and ADD as members of that new code.

Define Recode

Source Field Name:

Field Description: Place of Birth for 5% file

New Source Field Name:

New Code Definition

New Code:

Available Codes:

100	100 Albania
101	101 Andorra (See cod
102	102 Austria
103	103 Belgium
104	104 Bulgaria
105	105 Czechoslovakia
106	106 Denmark
107	107 Faroe Islands (Se
108	108 Finland
109	109 France

Members:

001	001 Alabama
002	002 Alaska
004	004 Arizona
005	005 Arkansas
006	006 California
008	008 Colorado
009	009 Connecticut
010	010 Delaware
011	011 District of Columbi
012	012 Florida

Please, enter a Value for your next New Code (ex. Foreign Born). Then select 100 – 554 and ADD as members of that new code.

Define Recode

Source Field Name:

Field Description: Place of Birth for 5% file

New Source Field Name:

New Code Definition

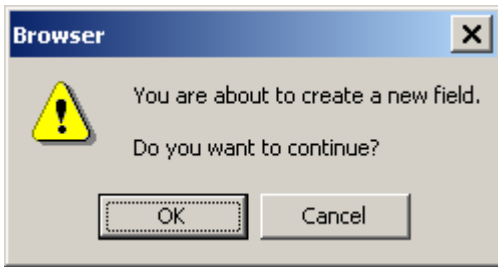
New Code:

Available Codes:

Members:

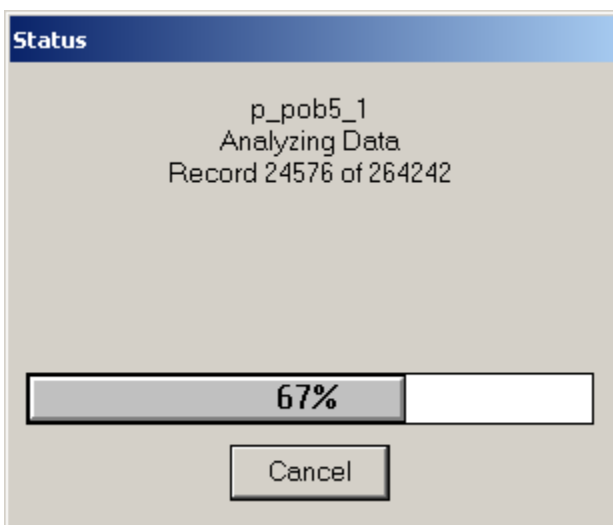
100	100 Albania
101	101 Andorra (See cod
102	102 Austria
103	103 Belgium
104	104 Bulgaria
105	105 Czechoslovakia
106	106 Denmark
107	107 Faroe Islands (Se
108	108 Finland
109	109 France

Please, click on the “OK” button.



Please, click on the “OK” button.

NOTE: In creating this recode you are adding a new variable p_pob5_1 to a copy of the extract. You will see a status window for the building of this extract copy.



NOTE: You will see the new variable p_pob5_1 in the variable listings.

Please, left click on the p_pob5_1 variable, drag it to, and drop it into the Row dimension.

Beyond 20/20 Browser - Extract: (C:\TEMP\2000.IVX)

File Edit View Dimension Item Data Window Help

← p_pob5_1 →

Extract: (C:\TEMP\2000.IVX)

Units: Avg(p_inctot) h_puma5: Total

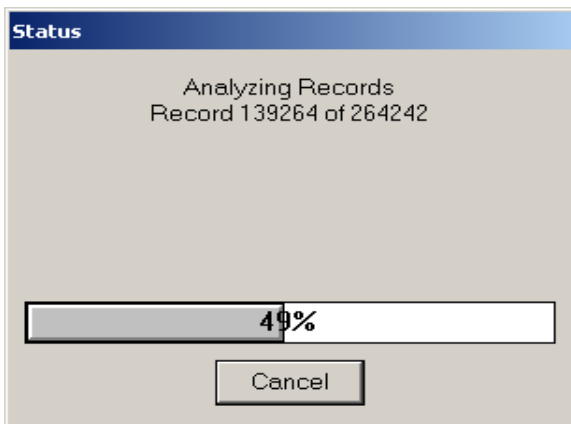
			Total	Male	Female
p_race1	p_ancrst5	p_pob5_1			
	Total	Total	-	-	-
		Foreign Born	-	-	-
		Native Born	-	-	-
	Total	Total	-	-	-
	Alsatian	Foreign Born	-	-	-
		Native Born	-	-	-
	Total	Total	-	-	-
	Andorran (see ...)	Foreign Born	-	-	-
		Native Born	-	-	-
	Total	Total	-	-	-

For Help, press F1

3/3 Total T ENG

p_abwork
p_abworka
p_age
p_agea
p_aian
p_anca
p_ancrst5
p_ancr
p_ancscnd5
p_asian
p_backwrk
p_black

Please, load data into the table by clicking on the “GO” button.



NOTE: Due to the complexity of a table it will take longer for this extract to compile.

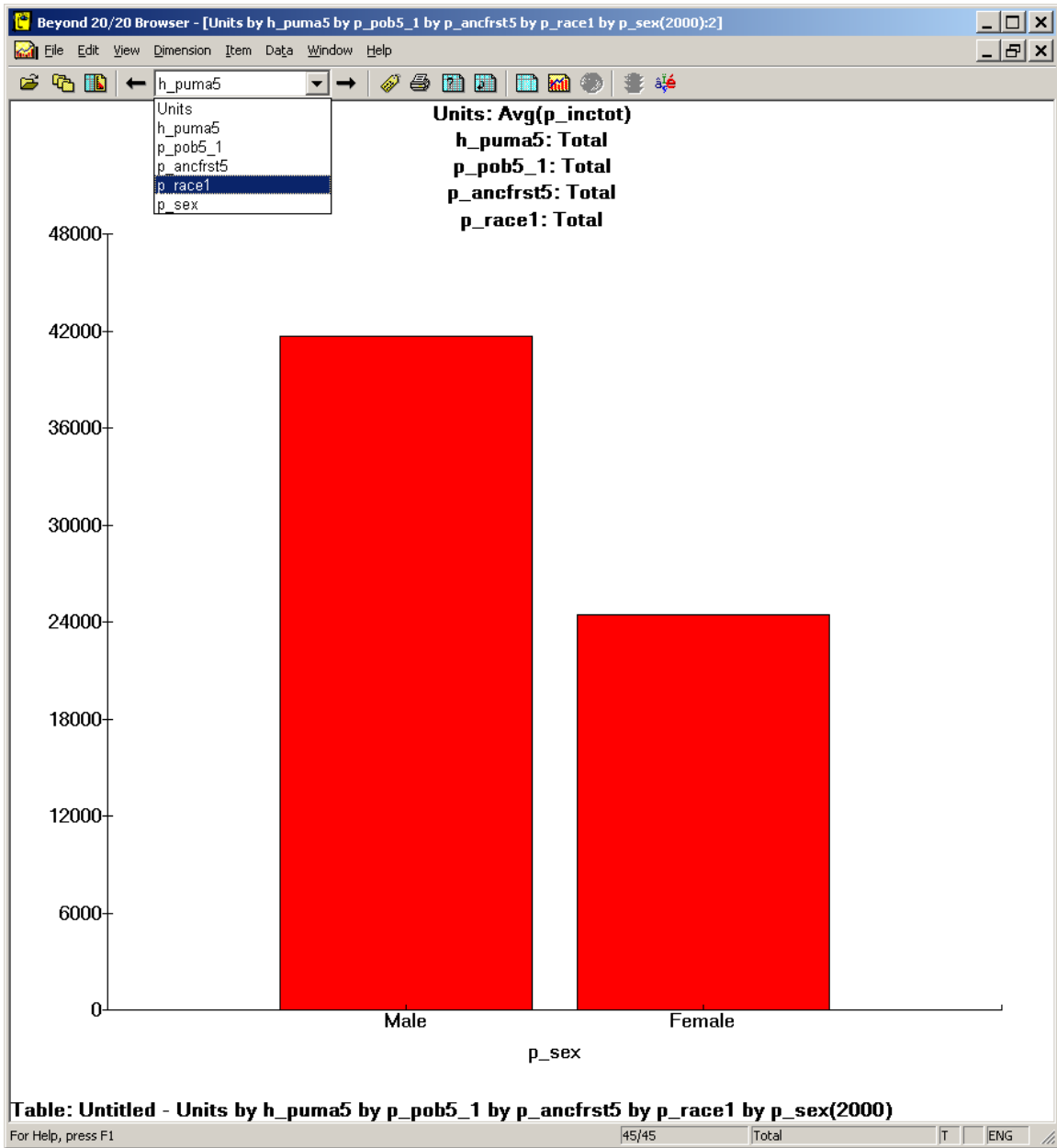
Units: Avg(p_inctot)			h_puma5@: Total		
			Total	Male	Female
p_race1	p_ancfst5	p_pob5_1			
Total	Total	Total	32,601	41,670	24,410
		Foreign Born	29,686	38,420	21,692
		Native Born	33,012	42,133	24,791
	Alsation	Total	51,725	75,717	8,644
		Foreign Born	102,000	102,000	-
		Native Born	43,905	68,748	8,644
	Andorran (see code 997)	Total	-	-	-
		Foreign Born	-	-	-
		Native Born	-	-	-
	Austrian (includes 004)	Total	52,476	71,945	31,622
		Foreign Born	43,639	64,688	43,000
		Native Born	8,837	7,257	-

NOTE: Variables cannot be added once data has been loaded into a table. However, the pivoting function is still available. Play with pivoting to create different looking tables.

To Chart: select each column value, except “total”, by clicking one at a time while holding the *CTRL* key. Then, while still holding the *CTRL* key, click on the “total” value of one of the row variables, than the other row variable.

Units: Avg(p_inctot)			h_puma5@: Total		
			Total	Male	Female
p_race1	p_ancfst5	p_pob5_1			
Total	Total	Total	32,601	41,670	24,410
		Foreign Born	29,686	38,420	21,692
		Native Born	33,012	42,133	24,791
	Alsation	Total	51,725	75,717	8,644
		Foreign Born	102,000	102,000	-
		Native Born	43,905	68,748	8,644
	Andorran (see code 997)	Total	-	-	-
		Foreign Born	-	-	-
		Native Born	-	-	-
	Austrian (includes 004)	Total	52,476	71,945	31,622
		Foreign Born	43,639	64,688	43,000
		Native Born	8,837	7,257	-

Please, click on the View, Chart selection off of the application menu.



NOTE: By choosing the Dimension Variable and the Arrows you can scroll through all possible cross-tabulated charts.

Technical Support

Assistance needed in building PUMS tables using the Beyond 20/20 software is available as follows:

Telephone	(301) 763-7710
Text Telephone (TTY)	(301) 457-2347 or Federal Relay Service (800) 877-8339
Web Support	http://www.census.gov/support/PUMSdata.html
E-Mail Support	techsupp@census.gov
Live Chat	10:00 a.m. to 12:00 noon and 2:00 p.m. to 4:00 p.m. (EST); also available from the Web Support Website
User Notes	http://www.census.gov/prod/cen2000/notes/errata.pdf

Also, users with visual impairments having difficulty accessing PDF documents may contact technical support.