

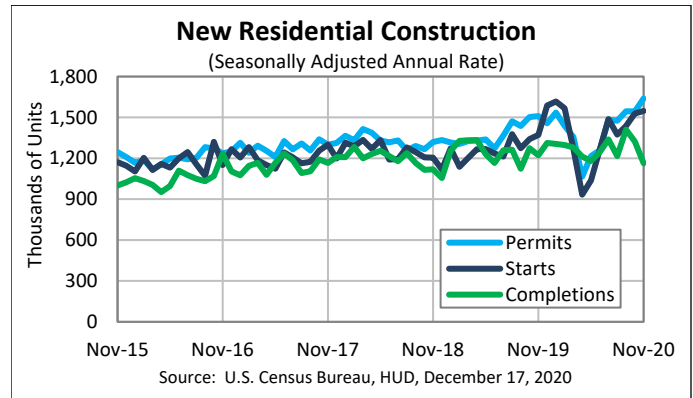
FOR RELEASE AT 8:30 AM EST, THURSDAY, DECEMBER 17, 2020

MONTHLY NEW RESIDENTIAL CONSTRUCTION, NOVEMBER 2020

Release Number: CB20-194

December 17, 2020 - The U.S. Census Bureau and the U.S. Department of Housing and Urban Development jointly announced the following new residential construction statistics for November 2020:

NEW RESIDENTIAL CONSTRUCTION NOVEMBER 2020	
Building Permits:	1,639,000
Housing Starts:	1,547,000
Housing Completions:	1,163,000
Next Release: January 21, 2021	
Seasonally Adjusted Annual Rate	
Source: U.S. Census Bureau, HUD, December 17, 2020	



Building Permits

Privately-owned housing units authorized by building permits in November were at a seasonally adjusted annual rate of 1,639,000. This is 6.2 percent (± 1.5 percent) above the revised October rate of 1,544,000 and is 8.5 percent (± 1.8 percent) above the November 2019 rate of 1,510,000. Single-family authorizations in November were at a rate of 1,143,000; this is 1.3 percent (± 0.8 percent) above the revised October figure of 1,128,000. Authorizations of units in buildings with five units or more were at a rate of 441,000 in November.

Housing Starts

Privately-owned housing starts in November were at a seasonally adjusted annual rate of 1,547,000. This is 1.2 percent (± 8.6 percent)* above the revised October estimate of 1,528,000 and is 12.8 percent (± 11.3 percent) above the November 2019 rate of 1,371,000. Single-family housing starts in November were at a rate of 1,186,000; this is 0.4 percent (± 7.9 percent)* above the revised October figure of 1,181,000. The November rate for units in buildings with five units or more was 352,000.

Housing Completions

Privately-owned housing completions in November were at a seasonally adjusted annual rate of 1,163,000. This is 12.1 percent (± 5.6 percent) below the revised October estimate of 1,323,000 and is 4.8 percent (± 10.6 percent)* below the November 2019 rate of 1,222,000. Single-family housing completions in November were at a rate of 874,000; this is 0.6 percent (± 7.5 percent)* below the revised October rate of 879,000. The November rate for units in buildings with five units or more was 280,000.

Data Inquiries

Economic Indicators Division, Residential Construction Branch
301-763-5160
eid.rcb.customer.service@census.gov

Media Inquiries

Public Information Office
301-763-3030
pio@census.gov



U.S. Department of Commerce
U.S. CENSUS BUREAU
census.gov



The December report is scheduled for release on January 21, 2021. View the full schedule in the Economic Briefing Room: <www.census.gov/economic-indicators/>. The full text and tables for this release can be found at <www.census.gov/construction/nrc/>.

EXPLANATORY NOTES

In interpreting changes in the statistics in this release, note that month-to-month changes in seasonally adjusted statistics often show movements which may be irregular. It may take three months to establish an underlying trend for building permit authorizations, six months for total starts, and six months for total completions. The statistics in this release are estimated from sample surveys and are subject to sampling variability as well as nonsampling error including bias and variance from response, nonreporting, and undercoverage. Estimated relative standard errors of the most recent data are shown in the tables. Whenever a statement such as “2.5 percent (± 3.2 percent) above” appears in the text, this indicates the range (-0.7 to +5.7 percent) in which the actual percentage change is likely to have occurred. All ranges given for percentage changes are 90 percent confidence intervals and account only for sampling variability. If a range does not contain zero, the change is statistically significant. If it does contain zero, the change is not statistically significant; that is, it is uncertain whether there was an increase or decrease. The same policies apply to the confidence intervals for percentage changes shown in the tables. On average, the preliminary seasonally adjusted estimates of total building permits, housing starts and housing completions are revised 2.3 percent or less. Explanations of confidence intervals and sampling variability can be found on our website. <www.census.gov/construction/nrc/how_the_data_are_collected/>

API

The Census Bureau’s application programming interface lets developers create custom apps to reach new users and makes key demographic, socio-economic and housing statistics more accessible than ever before. <www.census.gov/developers/>

FRED Mobile App



Receive the latest updates on the nation’s key economic indicators by downloading the FRED App <<https://fred.stlouisfed.org/fred-mobile/>> for both Apple and Android devices. FRED, the signature database of the Federal Reserve Bank of St. Louis, now incorporates the Census Bureau’s 13 economic indicators.

###

* The 90 percent confidence interval includes zero. In such cases, there is insufficient statistical evidence to conclude that the actual change is different from zero.

Data Inquiries

Economic Indicators Division, Residential Construction Branch
301-763-5160
eid.rcb.customer.service@census.gov

Media Inquiries

Public Information Office
301-763-3030
pio@census.gov



U.S. Department of Commerce
U.S. CENSUS BUREAU
census.gov



New Privately-Owned Housing Units Authorized in Permit-Issuing Places

(Thousands of Units. Detail may not add to total because of rounding.)

Table 1a - Seasonally adjusted annual rate

Period	United States				Northeast		Midwest		South		West	
	Total	1 unit	2 to 4 units	5 units or more	Total	1 unit	Total	1 unit	Total	1 unit	Total	1 unit
2019												
November	1,510	935	41	534	172	57	208	113	759	528	371	237
December	1,457	940	43	474	147	49	208	129	720	528	382	234
2020												
January	1,536	977	43	516	179	67	217	135	754	540	386	235
February	1,438	994	45	399	131	66	197	134	732	541	378	253
March	1,356	884	46	426	112	55	174	111	723	513	347	205
April	1,066	666	33	367	61	32	141	90	612	408	252	136
May	1,216	746	42	428	110	48	165	101	657	431	284	166
June	1,258	840	40	378	122	55	181	119	663	471	292	195
July	1,483	977	45	461	137	58	224	133	750	557	372	229
August	1,476	1,038	52	386	120	59	188	137	798	597	370	245
September	1,545	1,113	44	388	148	69	207	144	815	631	375	269
October (r)	1,544	1,128	57	359	132	60	211	145	829	652	372	271
November (p)	1,639	1,143	55	441	149	67	219	145	868	657	403	274
Average RSE (%) ¹	2	2	4	2	3	4	4	4	2	2	2	3
Percent Change ²												
Nov. 2020 from Oct. 2020	6.2%	1.3%	-3.5%	22.8%	12.9%	11.7%	3.8%	0.0%	4.7%	0.8%	8.3%	1.1%
90 percent confidence interval ³	± 1.5	± 0.8	± 7.2	± 4.1	± 9.8	± 4.1	± 2.2	± 3.0	± 0.9	± 0.6	± 4.4	± 2.8
Nov. 2020 from Nov. 2019	8.5%	22.2%	34.1%	-17.4%	-13.4%	17.5%	5.3%	28.3%	14.4%	24.4%	8.6%	15.6%
90 percent confidence interval ³	± 1.8	± 1.6	± 12.6	± 3.5	± 2.6	± 7.6	± 7.7	± 4.0	± 1.1	± 1.5	± 6.1	± 5.9

Table 1b - Not seasonally adjusted

Period	United States				Northeast		Midwest		South		West	
	Total	1 unit	2 to 4 units	5 units or more	Total	1 unit	Total	1 unit	Total	1 unit	Total	1 unit
2018 Annual	1,328.8	855.3	39.7	433.8	123.4	53.9	185.5	117.9	677.1	474.9	342.8	208.7
2019 Annual	1,386.0	862.1	42.6	481.4	141.2	52.7	184.8	114.2	710.3	486.2	349.8	209.0
RSE (%)	X	X	X	X	X	X	X	X	X	X	X	X
2019 Year to date	1,262.2	791.9	38.5	431.8	125.1	48.5	171.6	107.0	649.5	444.7	316.0	191.6
2020 Year to date	1,313.6	888.3	42.1	383.3	119.6	52.9	181.3	119.6	694.6	508.0	318.1	207.7
RSE (%)	2	2	2	1	2	3	3	4	2	2	2	3
Year to date percent change²	4.1%	12.2%	9.4%	-11.2%	-4.4%	9.1%	5.7%	11.8%	6.9%	14.2%	0.7%	8.4%
90 percent confidence interval ³	± 0.4	± 0.5	± 3.2	± 1.0	± 1.4	± 2.7	± 2.1	± 2.1	± 0.4	± 0.7	± 1.1	± 1.6
2019												
November	111.0	65.0	3.0	42.9	13.7	4.4	15.6	8.1	53.3	36.3	28.3	16.2
December	110.7	64.2	3.2	43.3	13.0	3.3	12.8	7.3	53.7	36.7	31.3	17.0
2020												
January	112.8	70.4	3.0	39.5	12.3	4.1	12.1	6.8	60.6	42.6	27.8	16.8
February	100.2	70.8	3.2	26.2	7.9	4.0	10.3	7.2	55.1	41.5	26.9	18.2
March	115.9	78.3	3.9	33.8	9.2	4.4	13.7	9.1	63.4	46.8	29.6	18.0
April	96.0	63.3	2.8	29.8	4.9	2.9	13.8	9.1	54.6	38.4	22.7	12.9
May	104.4	66.1	3.3	35.1	9.2	4.3	15.5	9.9	55.6	37.2	24.2	14.7
June	124.0	84.3	3.9	35.8	12.9	5.8	18.2	12.9	63.4	45.4	29.4	20.2
July	135.4	92.1	4.2	39.1	12.7	5.7	21.3	13.4	68.7	51.4	32.6	21.6
August	126.2	89.9	4.6	31.7	9.9	5.2	17.6	12.6	68.4	51.1	30.3	21.0
September	133.3	94.7	3.9	34.7	13.2	6.4	19.9	14.0	69.0	52.0	31.2	22.3
October (r)	132.9	95.3	5.2	32.5	11.5	5.5	21.1	13.8	68.7	53.5	31.7	22.6
November (p)	120.2	80.0	4.1	36.2	12.2	5.2	16.6	10.3	61.5	45.4	29.9	19.1
Average RSE (%) ¹	2	2	4	2	3	4	4	4	2	2	2	3

p Preliminary

r Revised

S Does not meet publication standards because tests for identifiable and stable seasonality do not meet reliability standards

X Not applicable

¹ Average relative standard error for the latest 6-month period

² Computed using unrounded data

³ If the 90 percent confidence interval includes zero, there is insufficient evidence to conclude that the actual change is different from zero

Note: Year-to-date permits estimates reflect revisions not distributed to months.

Source: U.S. Census Bureau and U.S. Department of Housing and Urban Development, New Residential Construction, December 17, 2020. Additional information on the survey methodology may be found at <www.census.gov/construction/nrc/how_the_data_are_collected/>.

New Privately-Owned Housing Units Authorized, but Not Started, at End of Period

(Thousands of Units. Detail may not add to total because of rounding.)

Table 2a - Seasonally adjusted

Period	United States				Northeast		Midwest		South		West	
	Total	1 unit	2 to 4 units	5 units or more	Total	1 unit	Total	1 unit	Total	1 unit	Total	1 unit
2019												
November	196	92	S	102	19	7	17	10	103	52	57	23
December	182	89	S	91	17	6	17	10	94	50	54	23
2020												
January	176	89	S	84	16	6	17	10	94	51	49	22
February	166	89	S	75	16	6	17	10	83	47	50	26
March	159	89	S	68	17	7	12	8	82	50	48	24
April	163	89	S	72	16	8	12	7	84	50	51	24
May	171	93	S	76	15	8	13	8	94	54	49	23
June	164	91	S	71	14	8	13	8	91	52	46	23
July	167	93	S	71	13	7	13	8	91	54	50	24
August	169	98	S	69	14	8	10	7	94	58	51	25
September (r)	178	104	S	72	17	10	11	9	97	59	53	26
October (r)	183	106	S	74	21	11	12	10	98	60	52	25
November (p)	187	107	S	77	20	11	13	11	100	60	54	25
Average RSE (%) ¹	6	7	X	9	17	21	10	10	8	8	9	14
Percent Change ²												
Nov. 2020 from Oct. 2020	2.2%	0.9%	S	4.1%	-4.8%	0.0%	8.3%	10.0%	2.0%	0.0%	3.8%	0.0%
90 percent confidence interval ³	± 3.6	± 4.6	X	± 7.0	± 13.8	± 10.6	± 15.9	± 14.7	± 5.1	± 6.8	± 5.7	± 9.4
Nov. 2020 from Nov. 2019	-4.6%	16.3%	S	-24.5%	5.3%	57.1%	-23.5%	10.0%	-2.9%	15.4%	-5.3%	8.7%
90 percent confidence interval ³	± 9.8	± 14.2	X	± 11.4	± 24.0	± 55.0	± 16.9	± 34.1	± 16.0	± 20.0	± 14.7	± 18.6

Table 2b - Not seasonally adjusted

Period	United States				Northeast		Midwest		South		West	
	Total	1 unit	2 to 4 units	5 units or more	Total	1 unit	Total	1 unit	Total	1 unit	Total	1 unit
2019												
November	186.2	86.4	1.6	98.1	17.2	6.6	16.8	8.2	97.8	50.9	54.4	20.7
December	181.7	84.6	1.8	95.3	17.4	5.6	15.0	8.0	95.0	47.8	54.3	23.2
2020												
January	177.6	89.1	2.5	85.9	15.7	5.7	17.2	9.0	94.6	51.6	50.1	22.8
February	165.2	87.2	2.0	76.1	15.7	6.1	16.6	9.4	83.0	46.0	50.0	25.7
March	161.2	91.6	2.0	67.6	16.9	7.7	12.7	8.8	81.9	50.5	49.7	24.5
April	166.7	93.8	1.7	71.3	16.0	7.9	13.3	8.8	84.5	51.7	53.0	25.3
May	172.0	95.4	1.7	74.9	15.5	8.9	13.4	8.7	93.7	54.1	49.4	23.6
June	169.8	93.7	2.4	73.6	14.9	8.6	12.0	8.2	94.5	52.9	48.4	24.1
July	168.2	96.4	2.6	69.2	13.5	7.3	12.9	8.6	90.9	55.9	50.8	24.6
August	167.1	97.1	2.3	67.7	14.4	7.6	9.5	6.9	93.5	58.0	49.8	24.7
September (r)	176.0	102.7	2.3	70.9	16.7	9.8	10.6	8.8	97.7	58.7	51.0	25.4
October (r)	179.8	103.3	2.5	74.0	19.4	10.2	12.1	9.5	97.6	59.2	50.7	24.4
November (p)	175.7	98.1	3.1	74.4	18.9	10.4	12.5	9.2	93.6	56.4	50.6	22.1
Average RSE (%) ¹	6	7	30	9	17	21	10	10	8	8	9	14

p Preliminary

r Revised

S Does not meet publication standards because tests for identifiable and stable seasonality do not meet reliability standards

X Not applicable

¹ Average relative standard error for the latest 6-month period

² Computed using unrounded data

³ See the Explanatory Notes in the accompanying text for an explanation of 90 percent confidence intervals

Note: These data represent the number of housing units authorized in all months up to and including the last day of the reporting period and not started as of that date without regard to the months of original permit issuance. Cancelled, abandoned, expired, and revoked permits are excluded.

Source: U.S. Census Bureau and U.S. Department of Housing and Urban Development, New Residential Construction, December 17, 2020.

Additional information on the survey methodology may be found at <www.census.gov/construction/nrc/how_the_data_are_collected/>.

New Privately-Owned Housing Units Started

(Thousands of Units. Detail may not add to total because of rounding.)

Table 3a - Seasonally adjusted annual rate

Period	United States				Northeast		Midwest		South		West	
	Total	1 unit	2 to 4 units	5 units or more	Total	1 unit	Total	1 unit	Total	1 unit	Total	1 unit
2019												
November	1,371	933	S	419	106	65	170	110	742	511	353	247
December	1,587	1,047	S	520	141	66	238	164	796	580	412	237
2020												
January	1,617	989	S	619	217	65	172	139	792	517	436	268
February	1,567	1,034	S	514	121	62	197	142	869	601	380	229
March	1,269	880	S	376	84	58	162	117	705	461	318	244
April	934	679	S	240	50	23	135	100	569	412	180	144
May	1,038	728	S	302	69	35	142	97	513	407	314	189
June	1,265	891	S	367	116	76	210	135	646	481	293	199
July	1,487	992	S	485	131	72	209	136	839	562	308	222
August	1,373	1,022	S	330	86	58	241	158	704	551	342	255
September (r)	1,437	1,097	S	335	124	67	209	126	753	636	351	268
October (r)	1,528	1,181	S	326	85	56	206	151	861	682	376	292
November (p)	1,547	1,186	S	352	135	59	196	137	809	661	407	329
Average RSE (%) ¹	4	4	X	13	18	16	10	7	6	5	7	7
Percent Change ²												
Nov. 2020 from Oct. 2020	1.2%	0.4%	S	8.0%	58.8%	5.4%	-4.9%	-9.3%	-6.0%	-3.1%	8.2%	12.7%
90 percent confidence interval ³	± 8.6	± 7.9	X	± 30.6	± 62.4	± 40.0	± 21.2	± 16.6	± 9.7	± 10.6	± 17.5	± 18.1
Nov. 2020 from Nov. 2019	12.8%	27.1%	S	-16.0%	27.4%	-9.2%	15.3%	24.5%	9.0%	29.4%	15.3%	33.2%
90 percent confidence interval ³	± 11.3	± 12.0	X	± 20.3	± 60.0	± 27.4	± 30.6	± 24.5	± 13.4	± 17.4	± 22.5	± 23.3

Table 3b - Not seasonally adjusted

Period	United States				Northeast		Midwest		South		West	
	Total	1 unit	2 to 4 units	5 units or more	Total	1 unit	Total	1 unit	Total	1 unit	Total	1 unit
2018 Annual	1,249.9	875.8	13.9	360.3	110.9	64.5	172.6	123.4	630.3	465.5	336.1	222.4
2019 Annual	1,290.0	887.7	13.4	388.9	114.8	57.1	169.4	119.8	684.8	496.9	321.0	213.9
RSE (%)	2	1	22	6	4	5	4	2	2	1	3	2
2019 Year to date	1,181.6	818.8	11.9	350.9	104.9	52.7	155.1	111.0	628.5	456.4	293.1	198.7
2020 Year to date	1,264.4	901.7	11.5	351.2	101.4	53.5	177.5	123.1	676.5	504.0	308.9	221.0
RSE (%)	2	1	22	5	5	6	2	3	2	1	3	2
Year to date percent change²	7.0%	10.1%	-3.4%	0.1%	-3.3%	1.5%	14.4%	11.0%	7.6%	10.4%	5.4%	11.2%
90 percent confidence interval ³	± 2.7	± 2.8	± 37.9	± 6.3	± 8.5	± 7.8	± 6.9	± 7.5	± 3.4	± 3.8	± 5.2	± 5.2
2019												
November	103.4	68.0	1.5	33.9	8.5	5.2	13.7	8.8	55.0	36.4	26.1	17.6
December	108.3	68.9	1.5	37.9	9.9	4.4	14.2	8.9	56.3	40.5	27.9	15.2
2020												
January	113.1	67.4	0.7	45.0	15.1	4.0	9.0	6.6	58.7	38.7	30.3	18.1
February	111.6	73.0	1.4	37.2	7.5	3.2	10.8	6.8	66.3	46.9	27.0	16.1
March	104.5	74.0	1.0	29.5	6.3	4.3	11.3	7.8	60.2	41.0	26.6	20.8
April	84.9	63.1	1.3	20.5	4.4	2.1	12.4	9.5	51.3	37.9	16.7	13.7
May	95.1	67.5	0.7	26.9	6.2	3.1	14.4	10.4	45.7	36.3	28.8	17.7
June	118.8	86.8	0.6	31.4	11.2	7.8	20.7	14.4	59.5	45.4	27.3	19.2
July	138.7	93.9	0.9	43.8	12.8	7.5	20.7	14.1	76.3	51.2	28.8	21.0
August	122.5	92.3	1.8	28.4	7.7	5.3	22.3	15.2	61.8	48.6	30.7	23.2
September (r)	126.3	95.1	0.5	30.8	11.5	6.2	19.8	12.2	64.8	54.0	30.3	22.6
October (r)	131.4	100.8	1.8	28.8	7.9	5.4	20.2	15.4	71.3	55.5	32.0	24.5
November (p)	117.5	87.8	0.7	29.0	10.9	4.6	15.7	10.8	60.6	48.4	30.3	23.9
Average RSE (%) ¹	4	4	53	13	18	16	10	7	6	5	7	7

p Preliminary

r Revised

S Does not meet publication standards because tests for identifiable and stable seasonality do not meet reliability standards

X Not applicable

¹ Average relative standard error for the latest 6-month period

² Computed using unrounded data

³ See the Explanatory Notes in the accompanying text for an explanation of 90 percent confidence intervals

Source: U.S. Census Bureau and U.S. Department of Housing and Urban Development, New Residential Construction, December 17, 2020.

Additional information on the survey methodology may be found at <www.census.gov/construction/nrc/how_the_data_are_collected/>.

New Privately-Owned Housing Units Under Construction at End of Period

(Thousands of Units. Detail may not add to total because of rounding.)

Table 4a - Seasonally adjusted

Period	United States				Northeast		Midwest		South		West	
	Total	1 unit	2 to 4 units	5 units or more	Total	1 unit	Total	1 unit	Total	1 unit	Total	1 unit
2019												
November	1,169	522	S	636	177	56	149	76	508	249	335	141
December	1,183	527	S	644	171	56	155	78	517	252	340	141
2020												
January	1,203	534	S	657	178	55	156	80	526	255	343	144
February	1,221	537	S	672	178	55	156	79	542	261	345	142
March	1,217	533	S	671	179	56	154	77	539	255	345	145
April	1,192	515	S	664	178	54	152	75	528	245	334	141
May	1,177	508	S	657	174	54	147	73	519	239	337	142
June	1,184	509	S	663	175	55	150	74	522	239	337	141
July	1,197	514	S	672	177	55	154	75	533	244	333	140
August	1,209	526	S	672	176	56	159	79	541	251	333	140
September (r)	1,215	542	S	662	179	57	160	80	545	263	331	142
October (r)	1,230	567	S	652	179	57	160	83	556	278	335	149
November (p)	1,254	589	S	655	181	56	162	83	570	292	341	158
Average RSE (%) ¹	3	3	X	5	7	6	4	4	4	4	6	7
Percent Change ²												
Nov. 2020 from Oct. 2020	2.0%	3.9%	S	0.5%	1.1%	-1.8%	1.3%	0.0%	2.5%	5.0%	1.8%	6.0%
90 percent confidence interval ³	± 0.9	± 1.0	X	± 1.4	± 2.7	± 3.1	± 2.5	± 2.3	± 1.1	± 1.7	± 1.4	± 1.5
Nov. 2020 from Nov. 2019	7.3%	12.8%	S	3.0%	2.3%	0.0%	8.7%	9.2%	12.2%	17.3%	1.8%	12.1%
90 percent confidence interval ³	± 2.8	± 3.4	X	± 4.7	± 11.5	± 9.1	± 5.4	± 6.6	± 3.7	± 5.1	± 6.4	± 7.3

Table 4b - Not seasonally adjusted

Period	United States				Northeast		Midwest		South		West	
	Total	1 unit	2 to 4 units	5 units or more	Total	1 unit	Total	1 unit	Total	1 unit	Total	1 unit
2019												
November	1,173.1	524.4	11.5	637.2	177.5	56.3	152.4	79.4	506.8	246.9	336.3	141.8
December	1,157.9	505.6	12.0	640.3	169.1	55.1	154.2	77.8	501.4	237.9	333.2	134.7
2020												
January	1,179.0	508.9	11.9	658.2	176.9	54.1	152.4	76.1	513.8	242.3	335.9	136.4
February	1,198.1	512.8	12.3	673.0	176.6	53.1	150.5	73.4	533.1	251.4	337.9	134.9
March	1,199.9	514.8	12.8	672.3	177.1	53.6	148.9	71.5	534.4	250.3	339.5	139.4
April	1,189.2	509.7	13.1	666.4	177.7	53.6	147.9	70.7	529.3	245.0	334.4	140.5
May	1,183.3	510.1	11.8	661.4	173.9	53.5	146.1	71.4	523.5	241.6	339.8	143.6
June	1,193.2	517.7	11.6	663.8	175.2	55.4	150.9	74.5	527.9	244.7	339.2	143.2
July	1,215.6	532.8	11.1	671.8	178.7	56.7	157.5	78.6	541.2	252.1	338.2	145.4
August	1,225.3	545.5	11.4	668.4	176.7	57.1	163.1	83.4	547.5	258.8	338.0	146.2
September (r)	1,234.4	562.4	10.8	661.2	180.2	58.5	164.4	84.2	553.1	271.9	336.7	147.8
October (r)	1,242.5	582.3	10.5	649.7	179.1	58.1	164.8	87.7	561.1	284.1	337.5	152.4
November (p)	1,261.8	593.8	10.3	657.7	183.2	57.1	166.1	86.8	570.1	290.9	342.4	159.0
Average RSE (%) ¹	3	3	16	5	7	6	4	4	4	4	6	7

p Preliminary

r Revised

S Does not meet publication standards because tests for identifiable and stable seasonality do not meet reliability standards

X Not applicable

¹ Average relative standard error for the latest 6-month period

² Computed using unrounded data

³ See the Explanatory Notes in the accompanying text for an explanation of 90 percent confidence intervals

Source: U.S. Census Bureau and U.S. Department of Housing and Urban Development, New Residential Construction, December 17, 2020.

Additional information on the survey methodology may be found at <www.census.gov/construction/nrc/how_the_data_are_collected/>.

New Privately-Owned Housing Units Completed

(Thousands of Units. Detail may not add to total because of rounding.)

Table 5a - Seasonally adjusted annual rate

Period	United States				Northeast		Midwest		South		West	
	Total	1 unit	2 to 4 units	5 units or more	Total	1 unit	Total	1 unit	Total	1 unit	Total	1 unit
2019												
November	1,222	915	S	297	117	63	157	114	647	522	301	216
December	1,312	903	S	402	205	58	139	108	644	512	324	225
2020												
January	1,305	906	S	389	104	78	184	126	634	467	383	235
February	1,297	1,010	S	278	104	69	193	155	650	537	350	249
March	1,280	907	S	365	78	46	202	131	706	524	294	206
April	1,212	885	S	318	59	32	169	125	709	551	275	177
May	1,180	838	S	328	95	51	183	112	621	486	281	189
June	1,245	929	S	311	71	57	186	130	670	504	318	238
July	1,338	948	S	380	103	72	150	110	722	528	363	238
August	1,216	895	S	312	95	53	170	111	611	481	340	250
September (r)	1,411	912	S	487	101	46	205	122	739	498	366	246
October (r)	1,323	879	S	428	93	59	190	114	695	485	345	221
November (p)	1,163	874	S	280	97	55	157	136	606	478	303	205
Average RSE (%) ¹	5	5	X	12	16	17	12	10	8	8	9	9
Percent Change ²												
Nov. 2020 from Oct. 2020	-12.1%	-0.6%	S	-34.6%	4.3%	-6.8%	-17.4%	19.3%	-12.8%	-1.4%	-12.2%	-7.2%
90 percent confidence interval ³	± 5.6	± 7.5	X	± 12.4	± 31.5	± 29.4	± 20.9	± 19.0	± 10.0	± 11.6	± 13.6	± 13.4
Nov. 2020 from Nov. 2019	-4.8%	-4.5%	S	-5.7%	-17.1%	-12.7%	0.0%	19.3%	-6.3%	-8.4%	0.7%	-5.1%
90 percent confidence interval ³	± 10.6	± 10.0	X	± 31.7	± 34.4	± 39.8	± 20.3	± 20.7	± 12.1	± 14.5	± 27.6	± 13.6

Table 5b - Not seasonally adjusted

Period	United States				Northeast		Midwest		South		West	
	Total	1 unit	2 to 4 units	5 units or more	Total	1 unit	Total	1 unit	Total	1 unit	Total	1 unit
2018 Annual	1,184.9	840.2	9.0	335.6	107.8	54.2	168.8	124.4	593.8	448.0	314.4	213.6
2019 Annual	1,255.1	903.2	9.0	342.9	122.5	62.1	170.6	121.5	637.2	499.2	324.8	220.5
RSE (%)	2	1	18	6	7	9	4	4	2	1	3	2
2019 Year to date	1,132.0	815.6	8.3	308.0	104.5	56.8	157.6	111.1	575.9	449.4	294.0	198.4
2020 Year to date	1,150.4	818.0	9.2	323.2	82.7	50.9	163.8	111.9	606.5	453.9	297.4	201.3
RSE (%)	2	2	19	6	6	9	3	2	2	2	4	3
Year to date percent change²	1.6%	0.3%	10.6%	4.9%	-20.9%	-10.5%	3.9%	0.7%	5.3%	1.0%	1.2%	1.5%
90 percent confidence interval ³	± 3.5	± 2.9	± 34.8	± 9.4	± 9.0	± 11.5	± 8.0	± 6.0	± 4.4	± 3.3	± 7.4	± 6.6
2019												
November	101.4	78.7	0.8	22.0	10.1	6.1	13.0	9.8	53.9	44.6	24.5	18.2
December	123.1	87.6	0.6	34.9	18.0	5.2	13.0	10.3	61.3	49.8	30.8	22.2
2020												
January	90.2	62.5	0.7	27.0	7.1	5.4	12.3	8.2	44.7	33.1	26.1	15.8
February	90.8	70.8	0.6	19.4	7.2	4.7	12.4	9.7	46.5	38.6	24.8	17.8
March	101.7	72.3	0.6	28.7	5.6	3.1	15.5	9.9	57.2	42.9	23.4	16.5
April	94.6	69.3	0.7	24.6	4.3	2.2	13.5	10.1	55.7	43.5	21.0	13.4
May	98.5	69.5	1.2	27.7	7.9	4.1	15.3	9.3	51.6	40.3	23.6	15.9
June	110.7	81.8	0.4	28.5	6.7	5.4	16.4	11.2	58.5	43.3	29.2	21.8
July	117.1	79.5	0.9	36.7	9.2	6.2	12.9	9.0	63.7	45.0	31.3	19.3
August	111.2	78.9	0.9	31.3	8.7	4.5	16.1	10.2	55.4	42.4	31.0	21.9
September (r)	121.1	78.6	1.0	41.4	9.2	4.5	18.2	11.1	61.7	41.2	32.1	21.9
October (r)	119.3	80.5	1.4	37.4	9.0	6.0	17.8	11.2	61.4	43.0	31.1	20.3
November (p)	95.3	74.1	0.7	20.5	7.9	4.8	13.5	12.0	50.0	40.7	23.8	16.7
Average RSE (%) ¹	5	5	52	12	16	17	12	10	8	8	9	9

p Preliminary

r Revised

S Does not meet publication standards because tests for identifiable and stable seasonality do not meet reliability standards

X Not applicable

¹ Average relative standard error for the latest 6-month period

² Computed using unrounded data

³ See the Explanatory Notes in the accompanying text for an explanation of 90 percent confidence intervals

Source: U.S. Census Bureau and U.S. Department of Housing and Urban Development, New Residential Construction, December 17, 2020.

Additional information on the survey methodology may be found at <www.census.gov/construction/nrc/how_the_data_are_collected/>.