

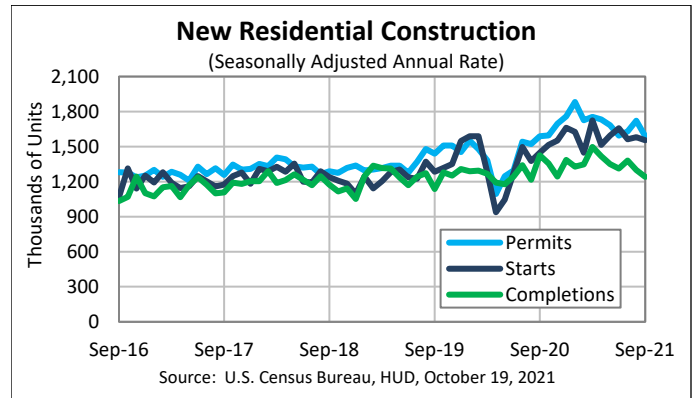
FOR RELEASE AT 8:30 AM EDT, TUESDAY, OCTOBER 19, 2021

MONTHLY NEW RESIDENTIAL CONSTRUCTION, SEPTEMBER 2021

Release Number: CB21-167

October 19, 2021 - The U.S. Census Bureau and the U.S. Department of Housing and Urban Development jointly announced the following new residential construction statistics for September 2021:

NEW RESIDENTIAL CONSTRUCTION SEPTEMBER 2021	
Building Permits:	1,589,000
Housing Starts:	1,555,000
Housing Completions:	1,240,000
Next Release: November 17, 2021	
Seasonally Adjusted Annual Rate (SAAR)	
Source: U.S. Census Bureau, HUD, October 19, 2021	



Building Permits

Privately-owned housing units authorized by building permits in September were at a seasonally adjusted annual rate of 1,589,000. This is 7.7 percent (± 0.9 percent) below the revised August rate of 1,721,000, but is virtually unchanged from (± 1.1 percent)* the September 2020 rate of 1,589,000. Single-family authorizations in September were at a rate of 1,041,000; this is 0.9 percent (± 0.8 percent) below the revised August figure of 1,050,000. Authorizations of units in buildings with five units or more were at a rate of 498,000 in September.

Housing Starts

Privately-owned housing starts in September were at a seasonally adjusted annual rate of 1,555,000. This is 1.6 percent (± 11.4 percent)* below the revised August estimate of 1,580,000, but is 7.4 percent (± 13.0 percent)* above the September 2020 rate of 1,448,000. Single-family housing starts in September were at a rate of 1,080,000; this is virtually unchanged from (± 8.4 percent)* the revised August figure of 1,080,000. The September rate for units in buildings with five units or more was 467,000.

Housing Completions

Privately-owned housing completions in September were at a seasonally adjusted annual rate of 1,240,000. This is 4.6 percent (± 9.0 percent)* below the revised August estimate of 1,300,000 and is 13.0 percent (± 9.1 percent) below the September 2020 rate of 1,426,000. Single-family housing completions in September were at a rate of 953,000; this is virtually unchanged from (± 11.7 percent)* the revised August rate of 953,000. The September rate for units in buildings with five units or more was 280,000.

Data Inquiries

Economic Indicators Division, Residential Construction Branch
301-763-5160
eid.rcb.customer.service@census.gov

Media Inquiries

Public Information Office
301-763-3030
pio@census.gov



U.S. Department of Commerce
U.S. CENSUS BUREAU
census.gov



The October report is scheduled for release on November 17, 2021. View the full schedule in the Economic Briefing Room: <www.census.gov/economic-indicators/>. The full text and tables for this release can be found at <www.census.gov/construction/nrc/>.

EXPLANATORY NOTES

In interpreting changes in the statistics in this release, note that month-to-month changes in seasonally adjusted statistics often show movements which may be irregular. It may take three months to establish an underlying trend for building permit authorizations, six months for total starts, and six months for total completions. The statistics in this release are estimated from sample surveys and are subject to sampling variability as well as nonsampling error including bias and variance from response, nonreporting, and undercoverage. Estimated relative standard errors of the most recent data are shown in the tables. Whenever a statement such as “2.5 percent (± 3.2 percent) above” appears in the text, this indicates the range (-0.7 to +5.7 percent) in which the actual percentage change is likely to have occurred. All ranges given for percentage changes are 90 percent confidence intervals and account only for sampling variability. If a range does not contain zero, the change is statistically significant. If it does contain zero, the change is not statistically significant; that is, it is uncertain whether there was an increase or decrease. The same policies apply to the confidence intervals for percentage changes shown in the tables. On average, the preliminary seasonally adjusted estimates of total building permits, housing starts and housing completions are revised 2.1 percent or less. Explanations of confidence intervals and sampling variability can be found on our website. <www.census.gov/construction/nrc/how_the_data_are_collected/>

API

The Census Bureau’s application programming interface lets developers create custom apps to reach new users and makes key demographic, socio-economic and housing statistics more accessible than ever before. <www.census.gov/developers/>

FRED Mobile App



Receive the latest updates on the nation’s key economic indicators by downloading the FRED App <<https://fred.stlouisfed.org/fred-mobile/>> for both Apple and Android devices. FRED, the signature database of the Federal Reserve Bank of St. Louis, now incorporates the Census Bureau’s 13 economic indicators.

###

* The 90 percent confidence interval includes zero. In such cases, there is insufficient statistical evidence to conclude that the actual change is different from zero.

Data Inquiries

Economic Indicators Division, Residential Construction Branch
301-763-5160
eid.rcb.customer.service@census.gov

Media Inquiries

Public Information Office
301-763-3030
pio@census.gov



U.S. Department of Commerce
U.S. CENSUS BUREAU
census.gov



New Privately-Owned Housing Units Authorized in Permit-Issuing Places

(Thousands of Units. Detail may not add to total because of rounding.)

Table 1a - Seasonally adjusted annual rate

Period	United States				Northeast		Midwest		South		West	
	Total	1 unit	2 to 4 units	5 units or more	Total	1 unit	Total	1 unit	Total	1 unit	Total	1 unit
2020												
September	1,589	1,121	46	422	156	65	215	143	837	647	381	266
October	1,595	1,141	60	394	141	59	220	144	848	665	386	273
November	1,696	1,155	54	487	165	64	233	145	890	672	408	274
December	1,758	1,233	49	476	155	71	259	168	898	710	446	284
2021												
January	1,883	1,268	55	560	195	79	245	175	956	711	487	303
February	1,726	1,145	48	533	170	78	250	172	863	609	443	286
March	1,755	1,194	58	503	155	78	253	174	908	661	439	281
April	1,733	1,148	50	535	168	76	228	159	918	649	419	264
May	1,683	1,134	58	491	156	71	223	138	898	678	406	247
June	1,594	1,066	49	479	135	64	205	129	878	641	376	232
July	1,630	1,048	54	528	130	58	213	126	857	629	430	235
August (r)	1,721	1,050	41	630	155	67	217	126	907	608	442	249
September (p)	1,589	1,041	50	498	124	56	218	127	853	618	394	240
Average RSE (%) ¹	2	2	4	2	3	5	4	4	2	2	2	3
Percent Change ²												
Sep. 2021 from Aug. 2021	-7.7%	-0.9%	22.0%	-21.0%	-20.0%	-16.4%	0.5%	0.8%	-6.0%	1.6%	-10.9%	-3.6%
90 percent confidence interval ³	± 0.9	± 0.8	± 11.8	± 2.5	± 5.6	± 3.5	± 6.1	± 1.9	± 0.9	± 0.6	± 1.2	± 2.7
Sep. 2021 from Sep. 2020	0.0%	-7.1%	8.7%	18.0%	-20.5%	-13.8%	1.4%	-11.2%	1.9%	-4.5%	3.4%	-9.8%
90 percent confidence interval ³	± 1.1	± 1.6	± 9.0	± 2.5	± 3.3	± 5.0	± 3.7	± 3.2	± 0.9	± 1.3	± 3.1	± 3.7

Table 1b - Not seasonally adjusted

Period	United States				Northeast		Midwest		South		West	
	Total	1 unit	2 to 4 units	5 units or more	Total	1 unit	Total	1 unit	Total	1 unit	Total	1 unit
2019 Annual	1,386.0	862.1	42.6	481.4	141.2	52.7	184.8	114.2	710.3	486.2	349.8	209.0
2020 Annual	1,471.1	979.4	47.2	444.5	134.8	56.3	202.1	128.0	776.3	568.5	358.0	226.7
RSE (%)	X	X	X	X	X	X	X	X	X	X	X	X
2020 Year to date	1,061.8	713.3	33.1	315.4	96.3	42.2	143.7	95.4	564.8	409.3	257.0	166.4
2021 Year to date	1,302.8	863.1	38.5	401.2	115.2	51.4	172.3	111.2	694.0	500.5	321.3	200.1
RSE (%)	2	2	2	1	3	4	3	4	1	2	2	3
Year to date percent change²	22.7%	21.0%	16.3%	27.2%	19.6%	21.8%	19.9%	16.6%	22.9%	22.3%	25.0%	20.3%
90 percent confidence interval ³	± 0.6	± 0.5	± 3.2	± 1.4	± 3.0	± 5.9	± 2.0	± 1.4	± 0.7	± 0.5	± 2.2	± 2.5
2020												
September	136.3	95.0	4.0	37.3	13.7	6.2	20.5	13.8	70.6	52.9	31.5	22.0
October	135.9	95.5	5.4	35.0	12.0	5.3	21.8	13.6	70.1	54.4	32.0	22.3
November	123.1	79.6	4.2	39.3	13.2	4.8	17.5	10.1	62.7	46.2	29.7	18.4
December	137.0	88.6	3.7	44.7	13.1	5.0	16.7	10.1	68.2	52.1	39.0	21.4
2021												
January	128.8	83.9	3.6	41.3	13.4	5.0	12.6	8.3	70.4	51.3	32.4	19.3
February	120.1	81.1	3.4	35.6	10.8	4.8	13.4	9.1	64.9	46.9	31.0	20.3
March	157.6	110.8	5.2	41.5	13.0	6.5	21.0	15.0	84.8	63.3	38.8	26.0
April	157.9	107.8	4.4	45.7	13.6	6.8	22.4	15.9	83.0	60.1	38.8	25.1
May	142.3	99.1	4.6	38.5	13.1	6.1	20.4	13.1	74.9	58.0	33.8	21.9
June	154.5	105.1	4.7	44.7	13.5	6.4	20.4	13.6	83.3	61.2	37.3	23.9
July	139.2	91.9	4.6	42.7	11.4	5.2	18.7	11.7	72.7	53.9	36.3	21.1
August (r)	154.6	93.5	3.9	57.2	13.3	6.1	21.2	12.0	82.0	53.3	38.1	22.2
September (p)	134.9	87.4	4.4	43.2	10.4	5.1	21.0	12.1	71.4	50.2	32.2	19.8
Average RSE (%) ¹	2	2	4	2	3	5	4	4	2	2	2	3

p Preliminary

r Revised

S Does not meet publication standards because tests for identifiable and stable seasonality do not meet reliability standards

X Not applicable

¹ Average relative standard error for the latest 6-month period

² Computed using unrounded data

³ If the 90 percent confidence interval includes zero, there is insufficient evidence to conclude that the actual change is different from zero

Note: Year-to-date permits estimates reflect revisions not distributed to months.

Source: U.S. Census Bureau and U.S. Department of Housing and Urban Development, New Residential Construction, October 19, 2021.

Additional information on the survey methodology may be found at <www.census.gov/construction/nrc/how_the_data_are_collected/>.

New Privately-Owned Housing Units Authorized, but Not Started, at End of Period

(Thousands of Units. Detail may not add to total because of rounding.)

Table 2a - Seasonally adjusted

Period	United States				Northeast		Midwest		South		West	
	Total	1 unit	2 to 4 units	5 units or more	Total	1 unit	Total	1 unit	Total	1 unit	Total	1 unit
2020												
September	178	104	S	72	17	10	11	9	96	59	54	26
October	183	106	S	74	22	11	11	9	98	60	52	26
November	187	108	S	76	23	12	13	10	101	61	50	25
December	187	104	S	80	23	12	13	8	98	60	53	24
2021												
January	204	114	S	87	23	12	13	9	111	66	57	27
February	217	122	S	92	25	12	16	12	118	71	58	27
March	229	130	S	97	24	12	18	13	126	76	61	29
April	242	139	S	101	24	12	22	14	135	82	61	31
May	246	146	S	97	23	12	21	12	140	90	62	32
June	245	148	S	94	22	11	21	13	141	93	61	31
July (r)	247	145	S	99	23	11	22	12	140	92	62	30
August (r)	249	145	S	102	25	12	20	11	138	88	66	34
September (p)	250	144	S	103	24	12	21	11	138	87	67	34
Average RSE (%) ¹	6	6	X	10	18	22	12	13	8	9	10	11
Percent Change ²												
Sep. 2021 from Aug. 2021	0.4%	-0.7%	S	1.0%	-4.0%	0.0%	5.0%	0.0%	0.0%	-1.1%	1.5%	0.0%
90 percent confidence interval ³	± 3.5	± 5.3	X	± 5.8	± 4.4	± 7.6	± 12.4	± 8.9	± 5.5	± 7.3	± 7.5	± 10.0
Sep. 2021 from Sep. 2020	40.4%	38.5%	S	43.1%	41.2%	20.0%	90.9%	22.2%	43.8%	47.5%	24.1%	30.8%
90 percent confidence interval ³	± 12.4	± 13.6	X	± 22.3	± 63.2	± 70.3	± 36.0	± 27.9	± 15.6	± 18.2	± 18.0	± 23.2

Table 2b - Not seasonally adjusted

Period	United States				Northeast		Midwest		South		West	
	Total	1 unit	2 to 4 units	5 units or more	Total	1 unit	Total	1 unit	Total	1 unit	Total	1 unit
2020												
September	176.0	102.7	2.3	70.9	16.7	9.8	10.6	8.8	97.7	58.7	51.0	25.4
October	178.1	102.9	2.8	72.3	19.5	10.2	10.5	8.5	97.1	59.4	51.0	24.9
November	174.4	99.2	2.8	72.5	20.8	11.1	11.7	8.6	94.6	57.5	47.4	22.1
December	187.9	101.0	3.2	83.6	23.0	11.1	11.6	7.0	99.1	58.9	54.2	24.1
2021												
January	201.9	109.7	3.0	89.3	22.8	11.0	12.3	7.7	109.1	64.2	57.7	26.8
February	215.7	119.1	3.1	93.6	25.8	12.4	16.2	11.1	116.4	68.6	57.3	27.0
March	236.3	135.9	2.3	98.2	24.7	12.3	21.5	14.3	127.7	78.7	62.5	30.7
April	253.0	148.5	2.5	102.0	23.8	12.6	26.5	17.4	138.1	85.1	64.5	33.4
May	250.5	149.7	2.6	98.1	24.2	12.5	21.3	13.9	141.4	91.3	63.5	32.0
June	254.4	155.5	2.7	96.2	24.0	11.4	22.7	14.8	145.4	96.3	62.3	33.0
July (r)	247.2	148.5	2.6	96.0	24.3	11.8	21.5	12.1	139.9	94.1	61.4	30.6
August (r)	249.0	146.7	2.4	99.9	24.7	12.1	18.6	10.8	140.3	89.9	65.5	33.9
September (p)	247.1	143.1	2.6	101.4	23.3	11.5	19.7	10.6	139.7	87.8	64.4	33.2
Average RSE (%) ¹	6	6	26	10	18	22	12	13	8	9	10	11

p Preliminary

r Revised

S Does not meet publication standards because tests for identifiable and stable seasonality do not meet reliability standards

X Not applicable

¹ Average relative standard error for the latest 6-month period

² Computed using unrounded data

³ See the Explanatory Notes in the accompanying text for an explanation of 90 percent confidence intervals

Note: These data represent the number of housing units authorized in all months up to and including the last day of the reporting period and not started as of that date without regard to the months of original permit issuance. Cancelled, abandoned, expired, and revoked permits are excluded.

Source: U.S. Census Bureau and U.S. Department of Housing and Urban Development, New Residential Construction, October 19, 2021.

Additional information on the survey methodology may be found at <www.census.gov/construction/nrc/how_the_data_are_collected/>.

New Privately-Owned Housing Units Started

(Thousands of Units. Detail may not add to total because of rounding.)

Table 3a - Seasonally adjusted annual rate

Period	United States				Northeast		Midwest		South		West	
	Total	1 unit	2 to 4 units	5 units or more	Total	1 unit	Total	1 unit	Total	1 unit	Total	1 unit
2020												
September	1,448	1,105	S	338	126	68	210	127	763	645	349	265
October	1,514	1,162	S	337	84	56	208	153	840	668	382	285
November	1,551	1,182	S	353	143	71	189	134	806	659	413	318
December	1,661	1,315	S	336	136	84	246	219	837	692	442	320
2021												
January	1,625	1,143	S	469	204	79	209	163	811	642	401	259
February	1,447	1,069	S	365	109	69	136	108	771	581	431	311
March	1,725	1,255	S	448	165	95	288	217	891	676	381	267
April	1,514	1,061	S	439	158	74	180	144	782	582	394	261
May	1,594	1,098	S	486	139	63	263	164	810	596	382	275
June	1,657	1,161	S	485	147	79	198	131	871	667	441	284
July (r)	1,562	1,112	S	439	69	42	183	145	900	668	410	257
August (r)	1,580	1,080	S	492	165	67	203	128	891	677	321	208
September (p)	1,555	1,080	S	467	120	66	217	137	835	632	383	245
Average RSE (%) ¹	5	5	X	15	16	16	11	10	7	7	8	8
Percent Change ²												
Sep. 2021 from Aug. 2021	-1.6%	0.0%	S	-5.1%	-27.3%	-1.5%	6.9%	7.0%	-6.3%	-6.6%	19.3%	17.8%
90 percent confidence interval ³	± 11.4	± 8.4	X	± 33.4	± 23.3	± 26.6	± 35.5	± 17.5	± 16.3	± 9.8	± 25.5	± 28.8
Sep. 2021 from Sep. 2020	7.4%	-2.3%	S	38.2%	-4.8%	-2.9%	3.3%	7.9%	9.4%	-2.0%	9.7%	-7.5%
90 percent confidence interval ³	± 13.0	± 13.0	X	± 39.1	± 31.4	± 34.8	± 38.9	± 18.1	± 17.0	± 19.7	± 20.3	± 16.9

Table 3b - Not seasonally adjusted

Period	United States				Northeast		Midwest		South		West	
	Total	1 unit	2 to 4 units	5 units or more	Total	1 unit	Total	1 unit	Total	1 unit	Total	1 unit
2019 Annual	1,290.0	887.7	13.4	388.9	114.8	57.1	169.4	119.8	684.8	496.9	321.0	213.9
2020 Annual	1,379.6	990.5	12.3	376.8	111.5	60.2	191.6	135.6	735.5	553.1	341.0	241.5
RSE (%)	2	1	22	5	6	9	2	2	2	1	3	2
2020 Year to date	1,015.5	713.1	8.9	293.4	82.6	43.6	141.5	96.9	544.7	400.1	246.6	172.5
2021 Year to date	1,213.6	859.2	9.2	345.2	106.5	52.7	158.7	112.5	646.0	490.7	302.4	203.3
RSE (%)	2	2	19	7	8	7	3	2	3	3	4	3
Year to date percent change²	19.5%	20.5%	2.7%	17.6%	28.9%	20.9%	12.1%	16.1%	18.6%	22.6%	22.6%	17.9%
90 percent confidence interval ³	± 4.4	± 5.5	± 57.1	± 8.7	± 20.0	± 10.8	± 6.8	± 7.2	± 5.9	± 8.5	± 5.1	± 4.6
2020												
September	126.3	95.1	0.5	30.8	11.5	6.2	19.8	12.2	64.8	54.0	30.3	22.6
October	131.2	100.2	1.3	29.7	7.8	5.4	20.4	15.5	70.4	55.2	32.7	24.1
November	117.8	87.5	1.3	29.1	11.5	5.6	15.0	10.5	60.0	48.0	31.2	23.4
December	115.1	89.7	0.7	24.6	9.5	5.7	14.7	12.7	60.4	49.8	30.4	21.5
2021												
January	115.2	77.9	1.0	36.2	14.7	5.0	11.3	7.8	60.7	47.6	28.5	17.5
February	102.1	74.6	1.0	26.5	6.3	3.4	7.1	5.1	57.6	43.8	31.1	22.4
March	140.6	102.8	1.7	36.0	12.8	7.2	20.4	14.7	75.3	58.0	32.1	22.9
April	135.5	97.2	1.2	37.0	13.8	6.7	16.1	13.1	70.1	53.2	35.5	24.3
May	145.7	100.5	0.9	44.3	12.5	5.6	26.6	17.6	71.9	52.5	34.6	24.9
June	154.3	111.6	1.0	41.7	14.4	8.5	19.6	13.8	79.5	61.9	40.9	27.4
July (r)	143.9	104.6	1.0	38.3	6.7	4.3	18.5	15.1	81.3	61.0	37.6	24.1
August (r)	140.6	97.0	0.7	42.9	14.5	6.0	18.7	12.2	78.6	60.0	28.7	18.8
September (p)	135.8	92.8	0.7	42.3	10.9	6.0	20.3	13.1	71.1	52.7	33.5	21.0
Average RSE (%) ¹	5	5	49	15	16	16	11	10	7	7	8	8

p Preliminary

r Revised

S Does not meet publication standards because tests for identifiable and stable seasonality do not meet reliability standards

X Not applicable

¹ Average relative standard error for the latest 6-month period

² Computed using unrounded data

³ See the Explanatory Notes in the accompanying text for an explanation of 90 percent confidence intervals

Source: U.S. Census Bureau and U.S. Department of Housing and Urban Development, New Residential Construction, October 19, 2021.

Additional information on the survey methodology may be found at www.census.gov/construction/nrc/how_the_data_are_collected/.

New Privately-Owned Housing Units Under Construction at End of Period

(Thousands of Units. Detail may not add to total because of rounding.)

Table 4a - Seasonally adjusted

Period	United States				Northeast		Midwest		South		West	
	Total	1 unit	2 to 4 units	5 units or more	Total	1 unit	Total	1 unit	Total	1 unit	Total	1 unit
2020												
September	1,218	545	S	662	179	57	160	80	546	264	333	144
October	1,228	566	S	651	179	57	162	83	552	277	335	149
November	1,247	586	S	650	180	56	163	83	564	291	340	156
December	1,264	609	S	645	178	57	163	86	576	303	347	163
2021												
January	1,284	619	S	654	183	58	165	87	581	308	355	166
February	1,289	623	S	655	181	58	163	85	581	309	364	171
March	1,307	637	S	658	186	58	165	91	589	313	367	175
April	1,324	646	S	665	194	60	167	93	593	318	370	175
May	1,339	658	S	668	197	60	172	97	595	322	375	179
June	1,371	678	S	680	201	61	175	96	615	339	380	182
July (r)	1,384	693	S	678	198	60	174	98	629	351	383	184
August (r)	1,408	704	S	691	199	60	178	98	643	363	388	183
September (p)	1,426	712	S	701	196	60	182	99	653	368	395	185
Average RSE (%) ¹	3	4	X	6	6	6	3	4	4	6	5	6
Percent Change ²												
Sep. 2021 from Aug. 2021	1.3%	1.1%	S	1.4%	-1.5%	0.0%	2.2%	1.0%	1.6%	1.4%	1.8%	1.1%
90 percent confidence interval ³	± 0.8	± 1.4	X	± 1.0	± 1.7	± 3.6	± 3.0	± 2.2	± 1.2	± 1.8	± 1.2	± 2.0
Sep. 2021 from Sep. 2020	17.1%	30.6%	S	5.9%	9.5%	5.3%	13.8%	23.8%	19.6%	39.4%	18.6%	28.5%
90 percent confidence interval ³	± 3.4	± 6.4	X	± 5.0	± 6.2	± 6.7	± 7.6	± 9.5	± 6.5	± 11.0	± 6.5	± 7.9

Table 4b - Not seasonally adjusted

Period	United States				Northeast		Midwest		South		West	
	Total	1 unit	2 to 4 units	5 units or more	Total	1 unit	Total	1 unit	Total	1 unit	Total	1 unit
2020												
September	1,234.4	562.4	10.8	661.2	180.2	58.5	164.4	84.2	553.1	271.9	336.7	147.8
October	1,238.6	581.2	10.6	646.9	178.9	57.7	166.7	88.1	556.8	283.8	336.2	151.6
November	1,255.3	592.0	10.8	652.5	181.6	57.0	166.4	86.4	564.9	290.9	342.4	157.7
December	1,240.3	590.5	10.1	639.8	177.0	56.8	162.0	85.5	560.6	289.8	340.8	158.4
2021												
January	1,263.8	597.3	10.7	655.8	181.9	56.6	161.3	83.5	570.4	296.6	350.1	160.6
February	1,270.3	600.4	10.9	658.9	178.9	55.4	157.0	78.6	574.7	300.8	359.7	165.6
March	1,289.9	619.0	12.0	658.9	184.3	56.1	158.1	84.1	584.7	307.9	362.9	170.9
April	1,315.5	636.9	13.1	665.5	192.5	58.8	161.5	87.4	591.7	316.2	369.8	174.5
May	1,343.1	657.9	13.1	672.1	197.9	59.8	170.6	95.1	597.4	322.7	377.3	180.4
June	1,382.3	687.6	13.5	681.2	202.2	61.9	176.2	96.8	620.4	343.9	383.4	185.1
July (r)	1,405.1	714.2	13.2	677.6	199.7	61.2	177.5	101.9	639.2	361.6	388.6	189.5
August (r)	1,426.6	726.6	13.1	686.9	200.0	61.9	183.5	103.7	651.6	373.5	391.5	187.5
September (p)	1,452.1	738.5	12.9	700.7	198.4	62.4	188.0	105.1	666.4	381.4	399.3	189.6
Average RSE (%) ¹	3	4	21	6	6	6	3	4	4	6	5	6

p Preliminary

r Revised

S Does not meet publication standards because tests for identifiable and stable seasonality do not meet reliability standards

X Not applicable

¹ Average relative standard error for the latest 6-month period

² Computed using unrounded data

³ See the Explanatory Notes in the accompanying text for an explanation of 90 percent confidence intervals

Source: U.S. Census Bureau and U.S. Department of Housing and Urban Development, New Residential Construction, October 19, 2021.

Additional information on the survey methodology may be found at <www.census.gov/construction/nrc/how_the_data_are_collected/>.

New Privately-Owned Housing Units Completed

(Thousands of Units. Detail may not add to total because of rounding.)

Table 5a - Seasonally adjusted annual rate

Period	United States				Northeast		Midwest		South		West	
	Total	1 unit	2 to 4 units	5 units or more	Total	1 unit	Total	1 unit	Total	1 unit	Total	1 unit
2020												
September	1,426	933	S	481	102	47	207	125	752	514	365	247
October	1,356	898	S	442	97	60	194	117	722	498	343	223
November	1,244	913	S	320	110	54	168	142	641	495	325	222
December	1,386	958	S	415	124	65	190	139	732	540	340	214
2021												
January	1,328	1,012	S	311	108	71	175	146	740	568	305	227
February	1,347	1,017	S	320	121	63	188	152	723	563	315	239
March	1,497	1,034	S	457	134	85	214	125	814	596	335	228
April	1,417	994	S	421	99	49	176	119	791	565	351	261
May	1,350	966	S	379	72	52	191	121	780	565	307	228
June	1,312	922	S	382	109	68	171	133	700	487	332	234
July (r)	1,380	945	S	422	107	56	189	122	711	513	373	254
August (r)	1,300	953	S	342	137	62	159	113	699	544	305	234
September (p)	1,240	953	S	280	111	56	188	129	676	554	265	214
Average RSE (%) ¹	6	5	X	14	25	20	13	12	7	6	10	8
Percent Change ²												
Sep. 2021 from Aug. 2021	-4.6%	0.0%	S	-18.1%	-19.0%	-9.7%	18.2%	14.2%	-3.3%	1.8%	-13.1%	-8.5%
90 percent confidence interval ³	± 9.0	± 11.7	X	± 22.2	± 40.8	± 38.3	± 18.9	± 18.5	± 13.7	± 18.3	± 14.2	± 13.6
Sep. 2021 from Sep. 2020	-13.0%	2.1%	S	-41.8%	8.8%	19.1%	-9.2%	3.2%	-10.1%	7.8%	-27.4%	-13.4%
90 percent confidence interval ³	± 9.1	± 11.0	X	± 14.0	± 40.2	± 33.6	± 20.9	± 24.7	± 14.3	± 16.9	± 15.5	± 16.9

Table 5b - Not seasonally adjusted

Period	United States				Northeast		Midwest		South		West	
	Total	1 unit	2 to 4 units	5 units or more	Total	1 unit	Total	1 unit	Total	1 unit	Total	1 unit
2019 Annual	1,255.1	903.2	9.0	342.9	122.5	62.1	170.6	121.5	637.2	499.2	324.8	220.5
2020 Annual	1,286.9	911.7	10.5	364.7	95.2	56.7	182.5	125.6	678.4	506.1	330.9	223.4
RSE (%)	2	1	18	6	6	9	3	3	2	2	3	2
2020 Year to date	935.8	663.4	7.2	265.3	65.8	40.0	132.4	88.8	495.1	370.3	242.5	164.3
2021 Year to date	992.0	710.5	5.1	276.4	81.2	44.5	133.0	91.9	542.2	402.8	235.6	171.3
RSE (%)	2	2	24	6	10	9	3	2	3	2	4	3
Year to date percent change²	6.0%	7.1%	-28.3%	4.2%	23.3%	11.2%	0.5%	3.5%	9.5%	8.8%	-2.8%	4.3%
90 percent confidence interval ³	± 3.9	± 3.7	± 25.7	± 8.1	± 21.8	± 16.6	± 6.5	± 6.8	± 6.5	± 5.2	± 8.5	± 9.6
2020												
September	121.1	78.6	1.0	41.4	9.2	4.5	18.2	11.1	61.7	41.2	32.1	21.9
October	120.8	80.7	1.4	38.8	9.2	5.9	18.2	11.4	62.5	42.9	31.0	20.5
November	99.8	75.6	0.8	23.4	8.7	4.6	14.1	12.2	51.6	41.0	25.3	17.8
December	130.5	92.0	1.2	37.3	11.5	6.2	17.8	13.2	69.2	51.9	32.1	20.8
2021												
January	93.7	72.2	0.3	21.1	7.9	5.4	11.9	10.0	53.4	41.8	20.5	15.1
February	94.6	72.5	0.6	21.5	8.0	4.1	12.6	10.2	51.7	41.0	22.4	17.3
March	120.5	83.9	0.5	36.1	9.9	6.1	16.4	9.4	67.7	50.4	26.4	17.9
April	112.4	78.9	0.2	33.3	7.4	3.4	14.1	9.6	63.8	45.9	27.1	20.0
May	112.0	80.3	0.4	31.4	5.7	4.0	15.4	9.7	65.3	47.5	25.6	19.1
June	115.9	80.9	0.7	34.4	10.3	6.5	15.2	11.8	59.9	40.8	30.6	21.8
July (r)	121.4	78.5	1.3	41.5	9.9	4.9	16.4	9.8	62.7	43.2	32.3	20.6
August (r)	118.2	83.7	0.5	34.0	12.7	5.2	14.6	10.0	63.1	47.7	27.9	20.8
September (p)	103.3	79.6	0.6	23.1	9.4	4.9	16.3	11.5	54.6	44.5	22.9	18.7
Average RSE (%) ¹	6	5	60	14	25	20	13	12	7	6	10	8

p Preliminary

r Revised

S Does not meet publication standards because tests for identifiable and stable seasonality do not meet reliability standards

X Not applicable

¹ Average relative standard error for the latest 6-month period

² Computed using unrounded data

³ See the Explanatory Notes in the accompanying text for an explanation of 90 percent confidence intervals

Source: U.S. Census Bureau and U.S. Department of Housing and Urban Development, New Residential Construction, October 19, 2021. Additional information on the survey methodology may be found at <www.census.gov/construction/nrc/how_the_data_are_collected/>.