

FOR RELEASE AT 8:30 AM EDT, WEDNESDAY, OCTOBER 19, 2022

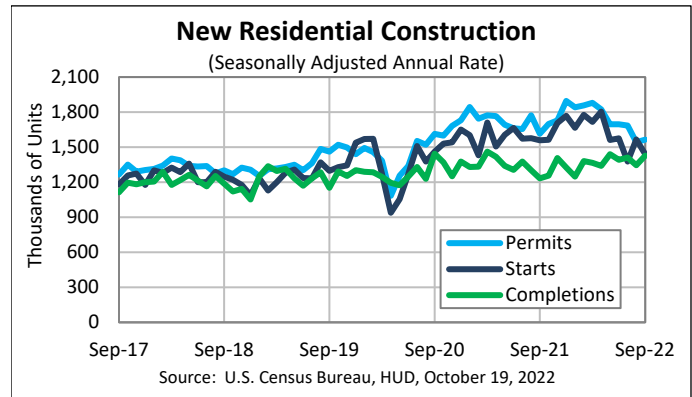
## MONTHLY NEW RESIDENTIAL CONSTRUCTION, SEPTEMBER 2022

Release Number: CB22-174

**Statement Regarding Natural Disasters:** For information on the impact of natural disasters, including hurricanes, on the compilation of this report, please see the [Natural Disaster FAQs](#).

**October 19, 2022** - The U.S. Census Bureau and the U.S. Department of Housing and Urban Development jointly announced the following new residential construction statistics for September 2022:

NEW RESIDENTIAL CONSTRUCTION SEPTEMBER 2022	
Building Permits:	1,564,000
Housing Starts:	1,439,000
Housing Completions:	1,427,000
Next Release: November 17, 2022	
Seasonally Adjusted Annual Rate (SAAR)	
Source: U.S. Census Bureau, HUD, October 19, 2022	



### Building Permits

Privately-owned housing units authorized by building permits in September were at a seasonally adjusted annual rate of 1,564,000. This is 1.4 percent above the revised August rate of 1,542,000, but is 3.2 percent below the September 2021 rate of 1,615,000. Single-family authorizations in September were at a rate of 872,000; this is 3.1 percent below the revised August figure of 900,000. Authorizations of units in buildings with five units or more were at a rate of 644,000 in September.

### Housing Starts

Privately-owned housing starts in September were at a seasonally adjusted annual rate of 1,439,000. This is 8.1 percent ( $\pm 14.9$  percent)\* below the revised August estimate of 1,566,000 and is 7.7 percent ( $\pm 11.5$  percent)\* below the September 2021 rate of 1,559,000. Single-family housing starts in September were at a rate of 892,000; this is 4.7 percent ( $\pm 10.7$  percent)\* below the revised August figure of 936,000. The September rate for units in buildings with five units or more was 530,000.

### Housing Completions

Privately-owned housing completions in September were at a seasonally adjusted annual rate of 1,427,000. This is 6.1 percent ( $\pm 11.0$  percent)\* above the revised August estimate of 1,345,000 and is 15.7 percent ( $\pm 13.1$  percent) above the September 2021 rate of 1,233,000. Single-family housing completions in September were at a rate of 1,049,000; this is 3.2 percent ( $\pm 8.8$  percent)\* above the revised August rate of 1,016,000. The September rate for units in buildings with five units or more was 376,000.

#### Data Inquiries

Economic Indicators Division, Residential Construction Branch  
301-763-5160  
[eid.rcb.customer.service@census.gov](mailto:eid.rcb.customer.service@census.gov)

#### Media Inquiries

Public Information Office  
301-763-3030  
[pio@census.gov](mailto:pio@census.gov)



U.S. Department of Commerce  
U.S. CENSUS BUREAU  
[census.gov](https://www.census.gov)



The October report is scheduled for release on November 17, 2022. View the full schedule in the Economic Briefing Room: <[www.census.gov/economic-indicators/](http://www.census.gov/economic-indicators/)>. The full text and tables for this release can be found at <[www.census.gov/construction/nrc/](http://www.census.gov/construction/nrc/)>.

## EXPLANATORY NOTES

In interpreting changes in the statistics in this release, note that month-to-month changes in seasonally adjusted statistics often show movements which may be irregular. It may take three months to establish an underlying trend for building permit authorizations, six months for total starts, and six months for total completions. The statistics in Table 1 in this release are based on a non-probability sample and not subject to sampling error. They are, however, still subject to nonsampling error. On average the total quantity response rate for these estimates is 75.9%. The statistics in Tables 2-5 in this release are estimated from sample surveys and are subject to sampling variability as well as nonsampling error including bias and variance from response, nonreporting, and undercoverage. Estimated relative standard errors of the most recent data are shown in the tables. Whenever a statement such as “2.5 percent ( $\pm 3.2$  percent) above” appears in the text, this indicates the range (-0.7 to +5.7 percent) in which the actual percentage change is likely to have occurred. All ranges given for percentage changes are 90 percent confidence intervals and account only for sampling variability. If a range does not contain zero, the change is statistically significant. If it does contain zero, the change is not statistically significant; that is, it is uncertain whether there was an increase or decrease. The same policies apply to the confidence intervals for percentage changes shown in the tables. On average, the preliminary seasonally adjusted estimates of total building permits, housing starts and housing completions are revised 2.7 percent or less. Explanations of confidence intervals and sampling variability can be found on our website. <[www.census.gov/construction/nrc/how\\_the\\_data\\_are\\_collected/](http://www.census.gov/construction/nrc/how_the_data_are_collected/)>

## API

The Census Bureau’s application programming interface lets developers create custom apps to reach new users and makes key demographic, socio-economic and housing statistics more accessible than ever before.

<[www.census.gov/developers/](http://www.census.gov/developers/)>

## FRED Mobile App



Receive the latest updates on the nation’s key economic indicators by downloading the FRED App <<https://fred.stlouisfed.org/fred-mobile/>> for both Apple and Android devices. FRED, the signature database of the Federal Reserve Bank of St. Louis, now incorporates the Census Bureau’s 13 economic indicators.

###

\* The 90 percent confidence interval includes zero. In such cases, there is insufficient statistical evidence to conclude that the actual change is different from zero.

### Data Inquiries

Economic Indicators Division, Residential Construction Branch  
301-763-5160  
[eid.rcb.customer.service@census.gov](mailto:eid.rcb.customer.service@census.gov)

### Media Inquiries

Public Information Office  
301-763-3030  
[pio@census.gov](mailto:pio@census.gov)



U.S. Department of Commerce  
U.S. CENSUS BUREAU  
[census.gov](http://census.gov)



## New Privately-Owned Housing Units Authorized in Permit-Issuing Places

(Thousands of Units. Detail may not add to total because of rounding.)

**Table 1a - Seasonally adjusted annual rate**

Period	United States				Northeast		Midwest		South		West	
	Total	1 unit	2 to 4 units	5 units or more	Total	1 unit	Total	1 unit	Total	1 unit	Total	1 unit
<b>2021</b>												
September .....	1,615	1,054	48	513	121	54	215	128	879	630	400	242
October .....	1,698	1,077	52	569	136	61	233	134	894	643	435	239
November .....	1,729	1,111	48	570	151	60	214	143	918	653	446	255
December .....	1,896	1,118	68	710	272	74	260	152	941	657	423	235
<b>2022</b>												
January .....	1,841	1,197	57	587	151	71	270	158	958	679	462	289
February .....	1,857	1,204	54	599	179	75	249	146	954	696	475	287
March .....	1,879	1,163	56	660	185	66	260	143	972	679	462	275
April .....	1,823	1,109	56	658	163	62	250	133	989	671	421	243
May .....	1,695	1,051	55	589	128	61	230	132	941	624	396	234
June .....	1,696	970	50	676	151	52	198	119	922	595	425	204
July .....	1,685	932	52	701	164	61	215	122	927	559	379	190
August (r) .....	1,542	900	47	595	138	56	202	111	826	540	376	193
<b>September (p)</b> .....	<b>1,564</b>	<b>872</b>	<b>48</b>	<b>644</b>	<b>125</b>	<b>58</b>	<b>210</b>	<b>109</b>	<b>852</b>	<b>529</b>	<b>377</b>	<b>176</b>
Percent Change <sup>1</sup>												
Sep. 2022 from Aug. 2022 .....	1.4%	-3.1%	2.1%	8.2%	-9.4%	3.6%	4.0%	-1.8%	3.1%	-2.0%	0.3%	-8.8%
Sep. 2022 from Sep. 2021 .....	-3.2%	-17.3%	0.0%	25.5%	3.3%	7.4%	-2.3%	-14.8%	-3.1%	-16.0%	-5.8%	-27.3%

**Table 1b - Not seasonally adjusted**

Period	United States				Northeast		Midwest		South		West	
	Total	1 unit	2 to 4 units	5 units or more	Total	1 unit	Total	1 unit	Total	1 unit	Total	1 unit
2020 Annual .....	1,471.1	979.4	47.2	444.5	134.8	56.3	202.1	128.0	776.3	568.5	358.0	226.7
2021 Annual .....	1,737.0	1,115.4	52.9	568.8	164.8	65.0	227.6	142.9	917.5	655.2	427.1	252.2
2021 Year to date .....	1,310.6	865.8	39.2	405.7	115.6	49.7	171.0	110.7	703.5	507.4	320.5	197.9
2022 Year to date .....	1,314.6	799.7	39.9	474.9	112.4	47.0	173.6	98.8	713.3	474.2	315.3	179.8
<b>Year to date percent change<sup>1</sup></b> .....	<b>0.3%</b>	<b>-7.6%</b>	<b>1.8%</b>	<b>17.1%</b>	<b>-2.8%</b>	<b>-5.4%</b>	<b>1.5%</b>	<b>-10.8%</b>	<b>1.4%</b>	<b>-6.5%</b>	<b>-1.6%</b>	<b>-9.2%</b>
<b>2021</b>												
September .....	136.2	88.2	4.2	43.8	10.5	4.9	20.4	12.1	72.8	51.4	32.4	19.8
October .....	137.7	86.4	4.6	46.7	10.6	5.2	22.1	12.0	70.3	50.8	34.7	18.4
November .....	133.4	81.1	3.9	48.4	12.7	4.8	17.0	10.7	69.2	47.6	34.5	18.1
December .....	155.3	82.1	5.2	68.0	25.9	5.3	17.6	9.6	74.5	49.5	37.4	17.7
<b>2022</b>												
January .....	132.3	83.4	3.8	45.1	10.3	4.6	14.5	7.9	75.6	51.7	31.9	19.1
February .....	131.5	87.1	3.8	40.6	11.4	4.6	13.4	8.3	72.4	53.6	34.2	20.6
March .....	169.0	107.4	5.0	56.7	15.9	5.3	21.6	12.3	89.5	64.0	42.0	25.8
April .....	156.6	98.2	4.8	53.6	12.8	5.3	23.3	12.9	84.5	58.0	36.0	22.1
May .....	149.0	95.4	4.7	48.9	10.9	5.8	22.2	13.0	81.2	55.3	34.6	21.3
June .....	157.2	91.5	4.8	60.9	15.2	5.3	19.1	12.1	82.9	53.9	40.0	20.2
July .....	134.4	75.6	4.2	54.6	13.0	5.4	17.8	10.4	73.4	43.9	30.2	15.9
August (r) .....	139.0	81.0	4.5	53.4	11.4	5.2	19.9	11.0	75.7	47.1	32.0	17.7
<b>September (p)</b> .....	<b>129.6</b>	<b>70.9</b>	<b>4.2</b>	<b>54.5</b>	<b>9.9</b>	<b>5.3</b>	<b>20.0</b>	<b>10.3</b>	<b>69.3</b>	<b>41.4</b>	<b>30.4</b>	<b>14.0</b>

p Preliminary

r Revised

S Does not meet publication standards because tests for identifiable and stable seasonality do not meet reliability standards

X Not applicable

<sup>1</sup> Computed using unrounded data

Note: Year-to-date permits estimates reflect revisions not distributed to months.

Source: U.S. Census Bureau and U.S. Department of Housing and Urban Development, New Residential Construction, October 19, 2022. Additional information on the survey methodology may be found at [www.census.gov/construction/nrc/how\\_the\\_data\\_are\\_collected/](http://www.census.gov/construction/nrc/how_the_data_are_collected/).

## New Privately-Owned Housing Units Authorized, but Not Started, at End of Period

(Thousands of Units. Detail may not add to total because of rounding.)

**Table 2a - Seasonally adjusted**

Period	United States				Northeast		Midwest		South		West	
	Total	1 unit	2 to 4 units	5 units or more	Total	1 unit	Total	1 unit	Total	1 unit	Total	1 unit
<b>2021</b>												
September .....	257	146	S	108	24	11	28	13	143	90	62	32
October .....	266	152	S	111	24	12	29	14	149	94	64	32
November .....	266	149	S	114	26	13	27	16	150	88	63	32
December .....	263	140	S	120	33	14	25	12	143	84	62	30
<b>2022</b>												
January .....	274	149	S	122	37	15	25	14	150	90	62	30
February .....	276	151	S	121	37	14	26	14	149	92	64	31
March .....	290	152	S	134	38	13	24	14	160	94	68	31
April .....	288	151	S	132	40	14	25	14	158	94	65	29
May .....	285	147	S	134	37	13	24	14	156	91	68	29
June .....	286	143	S	139	39	13	23	12	151	89	73	29
July (r) .....	300	148	S	148	39	13	23	13	160	91	78	31
August (r) .....	291	144	S	143	38	14	23	13	157	89	73	28
<b>September (p)</b> .....	<b>291</b>	<b>144</b>	<b>S</b>	<b>144</b>	<b>38</b>	<b>16</b>	<b>23</b>	<b>13</b>	<b>160</b>	<b>87</b>	<b>70</b>	<b>28</b>
Average RSE (%) <sup>1</sup> .....	4	5	X	8	15	21	10	11	6	7	9	9
Percent Change <sup>2</sup>												
<b>Sep. 2022 from Aug. 2022</b> .....	<b>0.0%</b>	<b>0.0%</b>	<b>S</b>	<b>0.7%</b>	<b>0.0%</b>	<b>14.3%</b>	<b>0.0%</b>	<b>0.0%</b>	<b>1.9%</b>	<b>-2.2%</b>	<b>-4.1%</b>	<b>0.0%</b>
90 percent confidence interval <sup>3</sup> .....	± 3.3	± 4.3	X	± 4.9	± 9.8	± 23.1	± 12.1	± 17.3	± 4.1	± 4.9	± 5.5	± 5.8
<b>Sep. 2022 from Sep. 2021</b> .....	<b>13.2%</b>	<b>-1.4%</b>	<b>S</b>	<b>33.3%</b>	<b>58.3%</b>	<b>45.5%</b>	<b>-17.9%</b>	<b>0.0%</b>	<b>11.9%</b>	<b>-3.3%</b>	<b>12.9%</b>	<b>-12.5%</b>
90 percent confidence interval <sup>3</sup> .....	± 13.5	± 8.0	X	± 30.0	± 23.8	± 56.7	± 24.0	± 41.3	± 12.5	± 10.6	± 29.8	± 10.2

**Table 2b - Not seasonally adjusted**

Period	United States				Northeast		Midwest		South		West	
	Total	1 unit	2 to 4 units	5 units or more	Total	1 unit	Total	1 unit	Total	1 unit	Total	1 unit
<b>2021</b>												
September .....	254.0	145.2	2.6	106.3	21.9	10.6	27.2	12.3	144.4	90.5	60.6	31.8
October .....	259.4	147.4	2.6	109.4	22.0	11.4	29.0	12.9	146.8	92.0	61.6	31.1
November .....	249.9	138.7	2.6	108.6	23.2	11.8	25.5	13.0	141.7	84.9	59.5	28.9
December .....	267.7	138.6	3.2	125.9	35.3	13.0	23.2	11.0	144.6	83.5	64.6	31.1
<b>2022</b>												
January .....	270.0	141.5	3.3	125.2	37.4	13.9	22.5	11.8	148.5	86.9	61.6	28.9
February .....	273.2	147.0	4.3	121.9	39.6	14.1	23.6	13.1	146.8	89.7	63.2	30.1
March .....	298.4	158.0	4.3	136.1	40.6	14.2	25.6	15.3	160.9	95.3	71.3	33.2
April .....	293.1	155.0	4.8	133.3	40.5	13.9	29.0	16.6	156.9	94.9	66.7	29.7
May .....	289.0	151.4	4.2	133.4	38.6	13.8	24.8	15.1	156.8	93.2	68.7	29.3
June .....	294.6	149.1	4.3	141.2	40.5	13.9	22.5	12.9	156.3	91.4	75.3	30.9
July (r) .....	295.9	147.4	3.7	144.8	39.1	13.3	22.2	12.5	158.5	90.8	76.1	30.8
August (r) .....	290.5	145.8	3.7	141.0	36.1	14.2	23.1	12.3	158.7	90.5	72.6	28.8
<b>September (p)</b> .....	<b>290.1</b>	<b>145.3</b>	<b>3.1</b>	<b>141.7</b>	<b>34.7</b>	<b>15.7</b>	<b>23.7</b>	<b>13.8</b>	<b>162.1</b>	<b>87.7</b>	<b>69.5</b>	<b>28.1</b>
Average RSE (%) <sup>1</sup> .....	4	5	25	8	15	21	10	11	6	7	9	9

p Preliminary

r Revised

S Does not meet publication standards because tests for identifiable and stable seasonality do not meet reliability standards

X Not applicable

<sup>1</sup> Average relative standard error for the latest 6-month period

<sup>2</sup> Computed using unrounded data

<sup>3</sup> See the Explanatory Notes in the accompanying text for an explanation of 90 percent confidence intervals

Note: These data represent the number of housing units authorized in all months up to and including the last day of the reporting period and not started as of that date without regard to the months of original permit issuance. Cancelled, abandoned, expired, and revoked permits are excluded.

Source: U.S. Census Bureau and U.S. Department of Housing and Urban Development, New Residential Construction, October 19, 2022.

Additional information on the survey methodology may be found at <[www.census.gov/construction/nrc/how\\_the\\_data\\_are\\_collected/](http://www.census.gov/construction/nrc/how_the_data_are_collected/)>.

## New Privately-Owned Housing Units Started

(Thousands of Units. Detail may not add to total because of rounding.)

**Table 3a - Seasonally adjusted annual rate**

Period	United States				Northeast		Midwest		South		West	
	Total	1 unit	2 to 4 units	5 units or more	Total	1 unit	Total	1 unit	Total	1 unit	Total	1 unit
<b>2021</b>												
September	1,559	1,094	S	455	127	69	204	132	809	627	419	266
October	1,563	1,079	S	474	114	53	214	130	817	624	418	272
November	1,706	1,220	S	469	114	63	216	137	946	726	430	294
December	1,768	1,212	S	553	141	69	335	212	901	670	391	261
<b>2022</b>												
January	1,666	1,157	S	499	105	48	196	142	919	661	446	306
February	1,777	1,213	S	532	134	71	234	157	999	681	410	304
March	1,716	1,191	S	511	211	64	239	161	846	674	420	292
April	1,805	1,173	S	619	133	52	219	154	1,025	679	428	288
May	1,562	1,073	S	459	130	55	230	141	860	625	342	252
June	1,575	1,013	S	554	127	47	206	140	875	617	367	209
July (r)	1,377	900	S	462	168	73	161	105	708	513	340	209
August (r)	1,566	936	S	610	168	62	187	130	855	523	356	221
<b>September (p)</b>	<b>1,439</b>	<b>892</b>	<b>S</b>	<b>530</b>	<b>147</b>	<b>58</b>	<b>182</b>	<b>112</b>	<b>738</b>	<b>536</b>	<b>372</b>	<b>186</b>
Average RSE (%) <sup>1</sup>	6	5	X	12	16	18	11	10	7	7	13	11
Percent Change <sup>2</sup>												
<b>Sep. 2022 from Aug. 2022</b>	<b>-8.1%</b>	<b>-4.7%</b>	<b>S</b>	<b>-13.1%</b>	<b>-12.5%</b>	<b>-6.5%</b>	<b>-2.7%</b>	<b>-13.8%</b>	<b>-13.7%</b>	<b>2.5%</b>	<b>4.5%</b>	<b>-15.8%</b>
90 percent confidence interval <sup>3</sup>	± 14.9	± 10.7	X	± 31.5	± 40.8	± 37.2	± 26.6	± 19.6	± 22.6	± 16.4	± 24.2	± 17.5
<b>Sep. 2022 from Sep. 2021</b>	<b>-7.7%</b>	<b>-18.5%</b>	<b>S</b>	<b>16.5%</b>	<b>15.7%</b>	<b>-15.9%</b>	<b>-10.8%</b>	<b>-15.2%</b>	<b>-8.8%</b>	<b>-14.5%</b>	<b>-11.2%</b>	<b>-30.1%</b>
90 percent confidence interval <sup>3</sup>	± 11.5	± 8.1	X	± 37.4	± 29.8	± 24.2	± 23.9	± 12.7	± 15.0	± 12.9	± 20.9	± 14.1

**Table 3b - Not seasonally adjusted**

Period	United States				Northeast		Midwest		South		West	
	Total	1 unit	2 to 4 units	5 units or more	Total	1 unit	Total	1 unit	Total	1 unit	Total	1 unit
2020 Annual	1,379.6	990.5	12.3	376.8	111.5	60.2	191.6	135.6	735.5	553.1	341.0	241.5
2021 Annual	1,601.0	1,127.2	11.7	462.1	136.5	67.6	215.5	148.2	848.1	643.7	400.8	267.7
RSE (%)	2	2	19	7	7	7	2	2	2	3	4	3
2022 Year to date	1,212.4	860.9	9.2	342.2	107.3	53.1	156.8	112.2	642.7	489.9	305.7	205.8
2022 Year to date	1,227.7	812.3	13.3	402.0	111.5	44.5	154.9	103.2	665.9	471.6	295.4	193.0
RSE (%)	3	1	22	7	4	7	3	4	2	2	7	3
<b>Year to date percent change<sup>2</sup></b>	<b>1.3%</b>	<b>-5.6%</b>	<b>44.7%</b>	<b>17.5%</b>	<b>3.9%</b>	<b>-16.2%</b>	<b>-1.2%</b>	<b>-7.9%</b>	<b>3.6%</b>	<b>-3.7%</b>	<b>-3.4%</b>	<b>-6.2%</b>
90 percent confidence interval <sup>3</sup>	± 3.5	± 3.7	± 56.1	± 10.1	± 10.5	± 5.5	± 5.7	± 7.7	± 3.7	± 4.8	± 8.5	± 4.1
<b>2021</b>												
September	135.2	93.5	0.9	40.8	11.6	6.4	19.0	12.6	68.3	52.0	36.2	22.6
October	133.6	91.6	0.9	41.1	10.0	4.8	20.2	13.0	67.8	51.1	35.5	22.8
November	130.8	91.2	1.4	38.1	9.1	5.0	17.0	10.6	71.7	53.7	33.0	21.9
December	124.2	83.4	0.2	40.7	10.0	4.8	21.5	12.4	66.0	49.0	26.7	17.2
<b>2022</b>												
January	121.0	81.6	0.8	38.6	7.4	3.1	11.0	6.9	69.5	49.5	33.0	22.2
February	126.1	85.0	2.4	38.8	8.2	3.6	13.2	7.5	75.1	51.9	29.7	22.0
March	142.6	100.1	1.2	41.3	16.8	5.0	17.5	11.1	72.7	58.7	35.6	25.3
April	164.3	109.7	1.1	53.5	11.8	4.8	19.7	14.1	92.7	62.9	40.0	27.9
May	140.6	96.7	2.7	41.2	11.7	4.9	23.0	15.0	76.0	54.9	29.9	21.9
June	144.9	96.9	0.7	47.4	11.6	4.8	20.7	15.0	79.7	57.6	33.1	19.5
July (r)	123.7	83.2	1.3	39.2	15.6	7.5	15.5	10.8	62.5	46.0	30.0	18.9
August (r)	140.1	83.6	1.8	54.7	15.0	5.5	17.6	12.5	75.3	45.5	32.1	20.0
<b>September (p)</b>	<b>124.4</b>	<b>75.4</b>	<b>1.5</b>	<b>47.4</b>	<b>13.3</b>	<b>5.3</b>	<b>16.6</b>	<b>10.4</b>	<b>62.5</b>	<b>44.4</b>	<b>31.9</b>	<b>15.3</b>
Average RSE (%) <sup>1</sup>	6	5	38	12	16	18	11	10	7	7	13	11

p Preliminary

r Revised

S Does not meet publication standards because tests for identifiable and stable seasonality do not meet reliability standards

X Not applicable

<sup>1</sup> Average relative standard error for the latest 6-month period

<sup>2</sup> Computed using unrounded data

<sup>3</sup> See the Explanatory Notes in the accompanying text for an explanation of 90 percent confidence intervals

Source: U.S. Census Bureau and U.S. Department of Housing and Urban Development, New Residential Construction, October 19, 2022.

Additional information on the survey methodology may be found at [www.census.gov/construction/nrc/how\\_the\\_data\\_are\\_collected/](http://www.census.gov/construction/nrc/how_the_data_are_collected/).

## New Privately-Owned Housing Units Under Construction at End of Period

(Thousands of Units. Detail may not add to total because of rounding.)

**Table 4a - Seasonally adjusted**

Period	United States				Northeast		Midwest		South		West	
	Total	1 unit	2 to 4 units	5 units or more	Total	1 unit	Total	1 unit	Total	1 unit	Total	1 unit
<b>2021</b>												
September .....	1,437	720	S	704	204	62	179	101	656	370	398	187
October .....	1,465	731	S	722	204	62	183	101	669	378	409	190
November .....	1,493	755	S	725	204	63	185	102	687	396	417	194
December .....	1,525	770	S	742	202	62	197	107	697	404	429	197
<b>2022</b>												
January .....	1,553	790	S	750	199	61	202	109	713	416	439	204
February .....	1,582	798	S	769	201	61	206	111	728	418	447	208
March .....	1,629	812	S	803	212	63	216	112	739	424	462	213
April .....	1,668	828	S	827	213	61	219	115	765	437	471	215
May .....	1,677	828	S	834	216	61	223	113	771	440	467	214
June .....	1,687	827	S	845	218	59	225	113	778	444	466	211
July (r) .....	1,682	815	S	851	221	60	215	109	776	438	470	208
August (r) .....	1,702	809	S	876	222	60	212	108	794	435	474	206
<b>September (p)</b> .....	<b>1,710</b>	<b>800</b>	<b>S</b>	<b>893</b>	<b>221</b>	<b>60</b>	<b>214</b>	<b>106</b>	<b>794</b>	<b>429</b>	<b>481</b>	<b>205</b>
Average RSE (%) <sup>1</sup> .....	3	3	X	6	6	6	4	6	3	4	5	5
Percent Change <sup>2</sup>												
<b>Sep. 2022 from Aug. 2022</b> .....	<b>0.5%</b>	<b>-1.1%</b>	<b>S</b>	<b>1.9%</b>	<b>-0.5%</b>	<b>0.0%</b>	<b>0.9%</b>	<b>-1.9%</b>	<b>0.0%</b>	<b>-1.4%</b>	<b>1.5%</b>	<b>-0.5%</b>
90 percent confidence interval <sup>3</sup> .....	± 0.8	± 1.1	X	± 1.1	± 1.9	± 2.0	± 2.4	± 1.9	± 1.1	± 1.5	± 1.6	± 1.6
<b>Sep. 2022 from Sep. 2021</b> .....	<b>19.0%</b>	<b>11.1%</b>	<b>S</b>	<b>26.8%</b>	<b>8.3%</b>	<b>-3.2%</b>	<b>19.6%</b>	<b>5.0%</b>	<b>21.0%</b>	<b>15.9%</b>	<b>20.9%</b>	<b>9.6%</b>
90 percent confidence interval <sup>3</sup> .....	± 3.6	± 5.1	X	± 6.1	± 7.3	± 5.5	± 9.4	± 11.7	± 6.1	± 7.3	± 4.3	± 4.1

**Table 4b - Not seasonally adjusted**

Period	United States				Northeast		Midwest		South		West	
	Total	1 unit	2 to 4 units	5 units or more	Total	1 unit	Total	1 unit	Total	1 unit	Total	1 unit
<b>2021</b>												
September .....	1,457.2	741.9	12.8	702.4	205.2	63.8	183.7	105.8	666.3	380.7	402.1	191.6
October .....	1,478.6	750.0	12.3	716.3	204.7	63.5	187.8	106.8	675.9	387.3	410.2	192.4
November .....	1,502.2	764.1	12.9	725.1	205.3	64.2	189.0	105.7	689.7	398.9	418.2	195.3
December .....	1,500.0	750.5	12.7	736.9	200.1	61.3	197.7	108.1	681.8	391.0	420.5	190.1
<b>2022</b>												
January .....	1,529.4	767.0	12.7	749.8	198.3	60.3	199.3	106.3	700.3	403.5	431.5	196.8
February .....	1,558.1	773.0	14.5	770.6	199.1	58.8	199.1	104.3	718.8	408.3	441.0	201.6
March .....	1,609.6	789.9	13.7	806.0	210.2	60.6	207.7	103.7	732.6	416.7	459.2	208.9
April .....	1,664.0	818.8	13.5	831.7	213.9	61.1	212.9	108.1	764.2	433.9	473.0	215.8
May .....	1,686.1	829.6	15.4	841.1	218.1	61.4	221.8	111.1	774.5	440.8	471.7	216.3
June .....	1,701.4	839.0	15.4	846.9	219.2	59.8	226.4	114.5	785.9	450.5	469.9	214.2
July (r) .....	1,703.9	838.2	15.8	849.9	222.2	61.8	218.3	112.2	788.1	450.4	475.3	213.8
August (r) .....	1,721.5	831.5	16.5	873.5	222.4	60.6	216.9	113.6	804.6	446.6	477.6	210.7
<b>September (p)</b> .....	<b>1,734.6</b>	<b>822.9</b>	<b>17.3</b>	<b>894.3</b>	<b>222.9</b>	<b>61.6</b>	<b>219.3</b>	<b>111.2</b>	<b>807.7</b>	<b>441.6</b>	<b>484.7</b>	<b>208.5</b>
Average RSE (%) <sup>1</sup> .....	3	3	17	6	6	6	4	6	3	4	5	5

p Preliminary

r Revised

S Does not meet publication standards because tests for identifiable and stable seasonality do not meet reliability standards

X Not applicable

<sup>1</sup> Average relative standard error for the latest 6-month period

<sup>2</sup> Computed using unrounded data

<sup>3</sup> See the Explanatory Notes in the accompanying text for an explanation of 90 percent confidence intervals

Source: U.S. Census Bureau and U.S. Department of Housing and Urban Development, New Residential Construction, October 19, 2022.

Additional information on the survey methodology may be found at <[www.census.gov/construction/nrc/how\\_the\\_data\\_are\\_collected/](http://www.census.gov/construction/nrc/how_the_data_are_collected/)>.

## New Privately-Owned Housing Units Completed

(Thousands of Units. Detail may not add to total because of rounding.)

**Table 5a - Seasonally adjusted annual rate**

Period	United States				Northeast		Midwest		South		West	
	Total	1 unit	2 to 4 units	5 units or more	Total	1 unit	Total	1 unit	Total	1 unit	Total	1 unit
<b>2021</b>												
September	1,233	944	S	282	99	54	196	126	681	551	257	213
October	1,256	936	S	306	115	51	171	121	645	517	325	247
November	1,406	953	S	444	114	52	213	134	744	526	335	241
December	1,326	1,014	S	306	120	66	171	105	747	600	288	243
<b>2022</b>												
January	1,247	929	S	305	84	51	139	125	670	517	354	236
February	1,380	1,076	S	296	133	85	196	142	759	626	292	223
March	1,366	1,052	S	303	108	61	192	143	793	624	273	224
April	1,339	1,013	S	311	99	59	170	118	734	567	336	269
May	1,440	1,043	S	392	104	67	174	145	789	586	373	245
June	1,391	1,006	S	379	101	61	195	133	773	586	322	226
July (r)	1,411	1,007	S	399	94	62	285	152	719	557	313	236
August (r)	1,345	1,016	S	322	126	63	201	128	669	566	349	259
<b>September (p)</b>	<b>1,427</b>	<b>1,049</b>	<b>S</b>	<b>376</b>	<b>128</b>	<b>41</b>	<b>207</b>	<b>146</b>	<b>780</b>	<b>646</b>	<b>312</b>	<b>216</b>
Average RSE (%) <sup>1</sup>	6	5	X	16	20	16	14	10	7	7	13	12
Percent Change <sup>2</sup>												
<b>Sep. 2022 from Aug. 2022</b>	<b>6.1%</b>	<b>3.2%</b>	<b>S</b>	<b>16.8%</b>	<b>1.6%</b>	<b>-34.9%</b>	<b>3.0%</b>	<b>14.1%</b>	<b>16.6%</b>	<b>14.1%</b>	<b>-10.6%</b>	<b>-16.6%</b>
90 percent confidence interval <sup>3</sup>	± 11.0	± 8.8	X	± 33.9	± 42.5	± 12.9	± 33.5	± 19.7	± 14.9	± 14.3	± 16.4	± 15.2
<b>Sep. 2022 from Sep. 2021</b>	<b>15.7%</b>	<b>11.1%</b>	<b>S</b>	<b>33.3%</b>	<b>29.3%</b>	<b>-24.1%</b>	<b>5.6%</b>	<b>15.9%</b>	<b>14.5%</b>	<b>17.2%</b>	<b>21.4%</b>	<b>1.4%</b>
90 percent confidence interval <sup>3</sup>	± 13.1	± 16.5	X	± 42.4	± 71.9	± 30.1	± 32.1	± 23.3	± 17.7	± 26.9	± 22.0	± 19.7

**Table 5b - Not seasonally adjusted**

Period	United States				Northeast		Midwest		South		West	
	Total	1 unit	2 to 4 units	5 units or more	Total	1 unit	Total	1 unit	Total	1 unit	Total	1 unit
2020 Annual	1,286.9	911.7	10.5	364.7	95.2	56.7	182.5	125.6	678.4	506.1	330.9	223.4
2021 Annual	1,341.0	969.7	7.7	363.7	110.9	60.5	184.2	125.3	727.0	546.6	318.9	237.2
RSE (%)	2	1	22	6	8	8	3	3	3	2	4	3
2021 Year to date	991.1	709.3	5.2	276.6	79.9	44.4	134.5	91.8	541.8	401.8	235.0	171.2
2022 Year to date	1,013.4	747.9	5.9	259.7	79.3	43.6	145.4	99.2	550.0	432.4	238.6	172.7
RSE (%)	2	2	26	7	7	7	5	4	2	3	4	3
<b>Year to date percent change<sup>2</sup></b>	<b>2.2%</b>	<b>5.4%</b>	<b>12.4%</b>	<b>-6.1%</b>	<b>-0.6%</b>	<b>-1.8%</b>	<b>8.1%</b>	<b>8.0%</b>	<b>1.5%</b>	<b>7.6%</b>	<b>1.5%</b>	<b>0.9%</b>
90 percent confidence interval <sup>3</sup>	± 4.1	± 4.3	± 59.5	± 8.2	± 19.6	± 8.2	± 10.3	± 9.7	± 5.9	± 7.0	± 7.4	± 7.0
<b>2021</b>												
September	103.0	79.0	0.6	23.4	8.6	4.8	17.1	11.3	55.1	44.3	22.2	18.6
October	110.8	83.0	1.2	26.6	10.3	4.8	16.1	11.7	54.6	43.5	29.8	23.0
November	111.7	78.2	0.7	32.8	9.2	4.6	17.8	11.9	58.4	42.2	26.4	19.4
December	127.3	99.2	0.5	27.6	11.5	6.7	15.8	9.9	72.3	59.1	27.6	23.6
<b>2022</b>												
January	87.1	65.6	0.9	20.6	5.8	3.6	9.4	8.5	48.1	37.7	23.8	15.9
February	98.6	78.6	0.5	19.5	8.6	5.5	13.4	9.8	56.1	47.3	20.5	16.0
March	112.7	87.9	0.9	23.9	7.9	4.2	14.9	11.0	68.7	55.3	21.3	17.4
April	107.4	81.2	1.2	25.0	7.5	4.3	13.5	9.4	60.0	46.6	26.4	21.0
May	120.9	87.1	0.5	33.3	8.3	5.1	14.3	11.8	66.8	49.6	31.5	20.6
June	122.4	87.5	0.6	34.3	9.5	5.8	17.2	11.6	66.2	49.2	29.5	20.9
July (r)	123.5	82.9	0.5	40.2	8.8	5.6	25.9	12.5	61.9	45.6	26.9	19.1
August (r)	121.1	88.8	0.7	31.6	12.2	6.0	18.4	11.2	58.3	48.2	32.3	23.5
<b>September (p)</b>	<b>119.7</b>	<b>88.2</b>	<b>0.2</b>	<b>31.3</b>	<b>10.7</b>	<b>3.5</b>	<b>18.5</b>	<b>13.4</b>	<b>63.9</b>	<b>52.8</b>	<b>26.5</b>	<b>18.5</b>
Average RSE (%) <sup>1</sup>	6	5	59	16	20	16	14	10	7	7	13	12

p Preliminary

r Revised

S Does not meet publication standards because tests for identifiable and stable seasonality do not meet reliability standards

X Not applicable

<sup>1</sup> Average relative standard error for the latest 6-month period

<sup>2</sup> Computed using unrounded data

<sup>3</sup> See the Explanatory Notes in the accompanying text for an explanation of 90 percent confidence intervals

Source: U.S. Census Bureau and U.S. Department of Housing and Urban Development, New Residential Construction, October 19, 2022. Additional information on the survey methodology may be found at [www.census.gov/construction/nrc/how\\_the\\_data\\_are\\_collected/](http://www.census.gov/construction/nrc/how_the_data_are_collected/).