

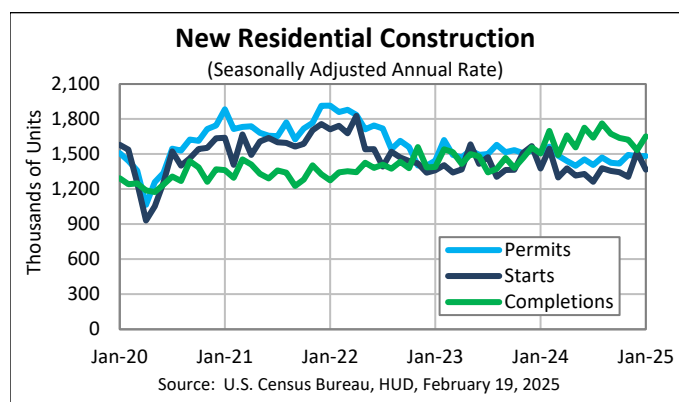
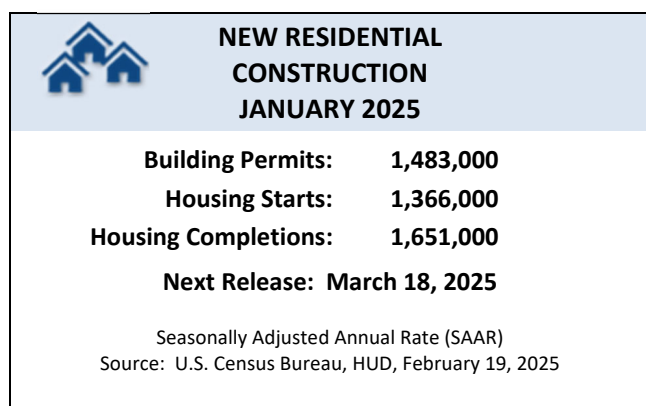
FOR RELEASE AT 8:30 AM EST, WEDNESDAY, FEBRUARY 19, 2025

MONTHLY NEW RESIDENTIAL CONSTRUCTION, JANUARY 2025

Release Number: CB25-21

Notice of methodology change: With the January New Residential Construction release on February 19, 2025, the Building Permits survey has made modifications to the methodology for imputation. The previous process calculated imputation factors by region and the new process will calculate factors at a mix of division and large individual states. For additional details on this change, see our imputation section of our [methodology](#) page.

February 19, 2025 - The U.S. Census Bureau and the U.S. Department of Housing and Urban Development jointly announced the following new residential construction statistics for January 2025:



Building Permits

Privately-owned housing units authorized by building permits in January were at a seasonally adjusted annual rate of 1,483,000. This is 0.1 percent above the revised December rate of 1,482,000, but is 1.7 percent below the January 2024 rate of 1,508,000. Single-family authorizations in January were at a rate of 996,000; this is virtually unchanged from the revised December figure of 996,000. Authorizations of units in buildings with five units or more were at a rate of 427,000 in January.

Housing Starts

Privately-owned housing starts in January were at a seasonally adjusted annual rate of 1,366,000. This is 9.8 percent (± 12.5 percent)* below the revised December estimate of 1,515,000 and is 0.7 percent (± 13.0 percent)* below the January 2024 rate of 1,376,000. Single-family housing starts in January were at a rate of 993,000; this is 8.4 percent (± 10.1 percent)* below the revised December figure of 1,084,000. The January rate for units in buildings with five units or more was 355,000.

Housing Completions

Privately-owned housing completions in January were at a seasonally adjusted annual rate of 1,651,000. This is 7.6 percent (± 8.4 percent)* above the revised December estimate of 1,534,000 and is 9.8 percent (± 14.0 percent)* above the January 2024 rate of 1,504,000. Single-family housing completions in January were at a rate of 982,000; this is 7.1 percent (± 8.3 percent)* above the revised December rate of 917,000. The January rate for units in buildings with five units or more was 652,000.

Data Inquiries

Economic Indicators Division, Residential Construction Branch
301-763-5160
eid.rcb.customer.service@census.gov

Media Inquiries

Public Information Office
301-763-3030
pio@census.gov



U.S. Department of Commerce
U.S. CENSUS BUREAU
census.gov



The February report is scheduled for release on March 18, 2025. View the full schedule in the Economic Briefing Room: www.census.gov/economic-indicators/. The full text and tables for this release can be found at www.census.gov/construction/nrc/.

EXPLANATORY NOTES

In interpreting changes in the statistics in this release, note that month-to-month changes in seasonally adjusted statistics often show movements which may be irregular. It may take three months to establish an underlying trend for building permit authorizations, six months for total starts, and six months for total completions. The statistics in Table 1 in this release are based on a non-probability sample and not subject to sampling error. They are, however, still subject to nonsampling error. The total quantity response rate for these estimates is 78.0%. The statistics in Tables 2-5 in this release are estimated from sample surveys and are subject to sampling variability as well as nonsampling error including bias and variance from response, nonreporting, and undercoverage. Estimated relative standard errors of the most recent data are shown in the tables. Whenever a statement such as “2.5 percent (± 3.2 percent) above” appears in the text, this indicates the range (-0.7 to +5.7 percent) in which the actual percentage change is likely to have occurred. All ranges given for percentage changes are 90 percent confidence intervals and account only for sampling variability. If a range does not contain zero, the change is statistically significant. If it does contain zero, the change is not statistically significant; that is, it is uncertain whether there was an increase or decrease. The same policies apply to the confidence intervals for percentage changes shown in the tables. On average, the preliminary seasonally adjusted estimates of total building permits, housing starts and housing completions are revised 2.2 percent or less. Explanations of confidence intervals and sampling variability can be found on our website.

www.census.gov/construction/nrc/methodology.html

The Census Bureau has reviewed this data product to ensure appropriate access, use, and disclosure avoidance protection of the confidential source data (Disclosure Review Board (DRB) approval number: CBDRB-FY24-0281).

API

The Census Bureau’s application programming interface lets developers create custom apps to reach new users and makes key demographic, socio-economic and housing statistics more accessible than ever before.

www.census.gov/developers/

FRED Mobile App



Receive the latest updates on the nation’s key economic indicators by downloading the FRED App <https://fred.stlouisfed.org/fred-mobile/> for both Apple and Android devices. FRED, the signature database of the Federal Reserve Bank of St. Louis, now incorporates the Census Bureau’s 13 economic indicators.

###

* The 90 percent confidence interval includes zero. In such cases, there is insufficient statistical evidence to conclude that the actual change is different from zero.

Data Inquiries

Economic Indicators Division, Residential Construction Branch
301-763-5160
eid.rcb.customer.service@census.gov

Media Inquiries

Public Information Office
301-763-3030
pio@census.gov



U.S. Department of Commerce
U.S. CENSUS BUREAU
census.gov



New Privately-Owned Housing Units Authorized in Permit-Issuing Places

(Thousands of Units. Detail may not add to total because of rounding.)

Table 1a - Seasonally adjusted annual rate

Period	United States				Northeast		Midwest		South		West	
	Total	1 unit	2 to 4 units	5 units or more	Total	1 unit	Total	1 unit	Total	1 unit	Total	1 unit
2024												
January	1,508	1,031	51	426	147	59	213	123	800	608	348	241
February	1,563	1,027	57	479	214	60	237	141	794	603	318	223
March	1,485	984	52	449	146	56	204	133	794	577	341	218
April	1,440	977	56	407	152	61	166	119	828	589	294	208
May	1,399	956	57	386	120	58	180	114	779	577	320	207
June	1,454	939	49	466	117	61	207	121	810	555	320	202
July	1,406	941	49	416	141	59	184	117	773	565	308	200
August	1,470	967	57	446	145	65	206	122	815	575	304	205
September	1,425	963	57	405	127	60	201	129	766	555	331	219
October	1,419	971	54	394	142	65	196	128	755	563	326	215
November	1,493	976	53	464	140	59	218	128	800	576	335	213
December (r)	1,482	996	53	433	147	62	219	127	807	595	309	212
2025												
January (p)	1,483	996	60	427	138	61	223	134	806	572	316	229
Percent Change ¹												
Jan. 2025 from Dec. 2024	0.1%	0.0%	13.2%	-1.4%	-6.1%	-1.6%	1.8%	5.5%	-0.1%	-3.9%	2.3%	8.0%
Jan. 2025 from Jan. 2024	-1.7%	-3.4%	17.6%	0.2%	-6.1%	3.4%	4.7%	8.9%	0.8%	-5.9%	-9.2%	-5.0%

Table 1b - Not seasonally adjusted

Period	United States				Northeast		Midwest		South		West	
	Total	1 unit	2 to 4 units	5 units or more	Total	1 unit	Total	1 unit	Total	1 unit	Total	1 unit
2023 Annual	1,511.1	920.0	54.7	536.4	140.8	55.5	195.1	114.0	829.9	556.5	345.3	194.0
2024 Annual (r)	1,471.4	981.8	54.4	435.2	142.3	59.7	201.8	124.7	802.5	583.4	324.8	214.1
2024												
January	114.8	75.9	3.7	35.1	10.7	4.4	12.3	6.6	66.7	48.0	25.1	17.0
February	119.1	79.4	4.1	35.6	14.3	4.2	14.3	8.8	64.9	49.5	25.6	16.9
March	124.3	85.2	4.3	34.8	12.4	4.4	15.9	10.6	67.2	51.2	28.8	18.9
April	132.3	93.6	5.0	33.7	12.1	5.6	16.2	12.2	77.5	56.0	26.5	19.8
May	132.4	94.1	5.2	33.1	10.9	5.8	18.3	11.8	73.2	55.8	30.0	20.6
June	125.7	83.7	4.1	37.8	11.8	5.7	18.1	11.2	67.2	48.3	28.6	18.5
July	126.5	85.8	4.6	36.1	12.3	5.4	17.3	11.3	69.9	50.7	27.1	18.5
August	131.9	86.1	5.3	40.5	12.6	6.0	19.8	11.6	72.6	50.1	26.9	18.3
September	113.5	76.7	4.7	32.1	10.1	5.1	18.3	11.6	59.1	43.0	25.9	17.0
October	125.1	84.4	4.9	35.8	11.1	5.8	20.5	12.6	65.6	47.9	27.8	18.1
November	107.3	66.6	3.9	36.8	11.0	4.3	16.6	8.9	54.7	38.9	25.0	14.5
December (r)	112.6	68.3	4.0	40.3	13.9	4.4	14.2	7.6	59.9	41.3	24.6	15.0
2025												
January (p)	112.5	73.3	4.5	34.8	9.9	4.5	12.9	7.3	66.8	45.0	22.9	16.5

p Preliminary

r Revised

S Does not meet publication standards because tests for identifiable and stable seasonality do not meet reliability standards

X Not applicable

¹ Computed using unrounded data

Note: Year-to-date permits estimates reflect revisions not distributed to months.

Source: U.S. Census Bureau and U.S. Department of Housing and Urban Development, New Residential Construction, February 19, 2025.

Additional information on the survey methodology may be found at <www.census.gov/construction/nrc/methodology.html>.

New Privately-Owned Housing Units Authorized, but Not Started, at End of Period

(Thousands of Units. Detail may not add to total because of rounding.)

Table 2a - Seasonally adjusted

Period	United States				Northeast		Midwest		South		West	
	Total	1 unit	2 to 4 units	5 units or more	Total	1 unit	Total	1 unit	Total	1 unit	Total	1 unit
2024												
January	267	142	S	120	30	13	21	12	151	86	65	31
February	266	140	S	122	33	12	21	13	148	83	64	32
March	275	139	S	131	38	14	20	12	151	81	66	32
April	274	139	S	129	41	15	21	12	147	81	65	31
May	271	138	S	127	38	15	22	11	149	83	62	29
June	276	136	S	133	39	15	25	12	147	80	65	29
July	286	144	S	134	39	15	26	12	154	87	67	30
August	284	145	S	133	39	14	24	12	156	88	65	31
September	286	143	S	137	35	12	27	13	156	86	68	32
October	277	142	S	129	33	12	25	12	154	87	65	31
November (r)	288	144	S	138	32	12	24	12	163	86	69	34
December (r)	277	141	S	131	30	12	24	12	154	83	69	34
2025												
January (p)	281	145	S	131	33	13	22	11	160	87	66	34
Average RSE (%) ¹	6	7	X	9	25	25	11	11	7	9	10	11
Percent Change ²												
Jan. 2025 from Dec. 2024	1.4%	2.8%	S	0.0%	10.0%	8.3%	-8.3%	-8.3%	3.9%	4.8%	-4.3%	0.0%
90 percent confidence interval ³	± 2.9	± 4.0	X	± 4.3	± 10.5	± 14.1	± 11.6	± 5.8	± 4.2	± 5.8	± 4.5	± 5.6
Jan. 2025 from Jan. 2024	5.2%	2.1%	S	9.2%	10.0%	0.0%	4.8%	-8.3%	6.0%	1.2%	1.5%	9.7%
90 percent confidence interval ³	± 6.9	± 10.7	X	± 11.3	± 21.9	± 32.6	± 22.9	± 20.2	± 11.2	± 16.7	± 13.1	± 16.7

Table 2b - Not seasonally adjusted

Period	United States				Northeast		Midwest		South		West	
	Total	1 unit	2 to 4 units	5 units or more	Total	1 unit	Total	1 unit	Total	1 unit	Total	1 unit
2024												
January	268.4	138.3	4.7	125.5	30.6	12.6	21.0	10.6	153.2	84.7	63.5	30.3
February	270.8	139.4	4.0	127.4	34.8	12.1	21.7	12.9	149.5	82.6	64.8	31.8
March	278.5	140.9	5.2	132.4	39.3	14.0	21.8	13.6	149.4	80.3	68.0	33.0
April	279.9	142.2	5.7	132.0	40.7	15.7	25.1	13.3	147.7	81.1	66.5	32.2
May	279.4	145.7	6.5	127.2	39.2	15.3	24.5	13.1	150.6	85.8	65.1	31.5
June	276.0	138.7	6.5	130.8	40.9	15.5	24.9	13.1	144.9	79.4	65.2	30.7
July	282.7	144.7	7.5	130.4	38.9	15.3	25.1	12.0	152.9	87.7	65.7	29.7
August	283.5	146.1	6.0	131.4	37.0	14.0	24.1	12.0	157.7	89.3	64.7	30.9
September	279.0	139.4	6.1	133.5	32.3	11.6	26.2	12.7	154.9	84.8	65.6	30.2
October	279.1	143.8	6.3	128.9	30.2	11.3	23.7	12.1	159.8	89.9	65.4	30.5
November (r)	276.9	137.0	6.0	133.9	29.7	11.2	22.3	10.1	158.3	84.7	66.5	31.0
December (r)	275.7	135.2	4.8	135.7	31.2	11.3	20.9	9.3	152.9	81.7	70.8	32.9
2025												
January (p)	285.6	144.8	5.0	135.8	33.0	12.8	22.0	9.8	163.4	88.2	67.3	34.0
Average RSE (%) ¹	6	7	23	9	25	25	11	11	7	9	10	11

p Preliminary

r Revised

S Does not meet publication standards because tests for identifiable and stable seasonality do not meet reliability standards

X Not applicable

¹ Average relative standard error for the latest 6-month period

² Computed using unrounded data

³ See the Explanatory Notes in the accompanying text for an explanation of 90 percent confidence intervals

Note: These data represent the number of housing units authorized in all months up to and including the last day of the reporting period and not started as of that date without regard to the months of original permit issuance. Cancelled, abandoned, expired, and revoked permits are excluded.

Source: U.S. Census Bureau and U.S. Department of Housing and Urban Development, New Residential Construction, February 19, 2025.

Additional information on the survey methodology may be found at <www.census.gov/construction/nrc/methodology.html>.

New Privately-Owned Housing Units Started

(Thousands of Units. Detail may not add to total because of rounding.)

Table 3a - Seasonally adjusted annual rate

Period	United States				Northeast		Midwest		South		West	
	Total	1 unit	2 to 4 units	5 units or more	Total	1 unit	Total	1 unit	Total	1 unit	Total	1 unit
2024												
January	1,376	1,011	S	347	133	69	139	112	754	579	350	251
February	1,546	1,134	S	396	119	82	239	152	863	669	325	231
March	1,299	1,041	S	251	96	67	154	135	732	615	317	224
April	1,377	1,037	S	334	103	63	182	142	806	617	286	215
May	1,315	992	S	305	100	70	149	108	737	576	329	238
June	1,329	983	S	329	120	71	171	112	746	598	292	202
July	1,262	861	S	376	173	57	180	128	638	465	271	211
August	1,379	1,006	S	339	120	85	206	137	763	564	290	220
September	1,355	1,045	S	295	165	94	177	131	727	594	286	226
October	1,344	943	S	386	109	64	252	142	658	514	325	223
November (r)	1,305	1,021	S	269	125	58	171	135	720	616	289	212
December (r)	1,515	1,084	S	399	145	62	202	152	887	645	281	225
2025												
January (p)	1,366	993	S	355	105	53	181	138	680	521	400	281
Average RSE (%) ¹	6	6	X	18	21	19	14	10	8	8	12	13
Percent Change ²												
Jan. 2025 from Dec. 2024	-9.8%	-8.4%	S	-11.0%	-27.6%	-14.5%	-10.4%	-9.2%	-23.3%	-19.2%	42.3%	24.9%
90 percent confidence interval ³	± 12.5	± 10.1	X	± 34.6	± 39.8	± 46.5	± 35.1	± 12.5	± 13.7	± 10.7	± 39.3	± 37.3
Jan. 2025 from Jan. 2024	-0.7%	-1.8%	S	2.3%	-21.1%	-23.2%	30.2%	23.2%	-9.8%	-10.0%	14.3%	12.0%
90 percent confidence interval ³	± 13.0	± 15.8	X	± 26.1	± 37.4	± 28.9	± 52.2	± 27.9	± 12.0	± 13.6	± 44.2	± 55.8

Table 3b - Not seasonally adjusted

Period	United States				Northeast		Midwest		South		West	
	Total	1 unit	2 to 4 units	5 units or more	Total	1 unit	Total	1 unit	Total	1 unit	Total	1 unit
2023 Annual	1,420.0	947.7	13.4	458.8	114.8	60.8	184.9	118.0	792.1	564.2	328.2	204.7
2024 Annual (r)	1,366.0	1,012.1	18.2	335.7	125.4	70.2	184.6	131.2	753.6	588.8	302.4	221.9
RSE (%)	2	1	27	8	7	8	3	3	3	2	3	3
2024												
January	97.9	70.3	1.4	26.1	9.4	4.6	7.2	5.2	57.0	43.8	24.3	16.8
February	113.7	82.2	1.2	30.3	7.5	4.7	14.0	7.3	68.2	53.3	24.0	16.8
March	109.8	88.8	0.6	20.5	7.6	5.2	11.4	9.9	64.1	54.5	26.7	19.2
April	125.7	96.1	0.6	29.0	9.2	5.7	16.6	13.2	72.7	56.3	27.1	20.9
May	120.9	91.6	1.7	27.7	9.1	6.4	15.3	11.6	66.6	51.9	29.9	21.7
June	123.6	93.3	1.5	28.8	10.8	6.5	17.0	11.9	68.8	55.8	27.0	19.1
July	115.3	80.9	2.2	32.2	16.0	6.0	17.8	13.3	56.5	41.7	25.0	19.9
August	121.8	89.5	3.0	29.4	10.8	7.7	19.2	13.1	66.1	48.8	25.8	19.7
September	116.1	89.4	1.3	25.5	14.7	8.5	16.3	12.3	61.1	49.6	24.1	19.0
October	115.1	79.6	1.3	34.2	9.6	5.6	24.0	14.3	54.2	41.4	27.3	18.3
November (r)	99.2	76.4	1.2	21.6	10.2	4.8	13.1	10.2	53.9	45.5	22.0	15.8
December (r)	106.8	74.1	2.4	30.3	10.6	4.3	12.8	9.0	64.4	46.1	19.0	14.8
2025												
January (p)	95.5	67.6	1.3	26.6	7.2	3.4	9.5	6.3	50.8	38.9	28.0	19.1
Average RSE (%) ¹	6	6	46	18	21	19	14	10	8	8	12	13

p Preliminary

r Revised

S Does not meet publication standards because tests for identifiable and stable seasonality do not meet reliability standards

X Not applicable

¹ Average relative standard error for the latest 6-month period

² Computed using unrounded data

³ See the Explanatory Notes in the accompanying text for an explanation of 90 percent confidence intervals

Source: U.S. Census Bureau and U.S. Department of Housing and Urban Development, New Residential Construction, February 19, 2025.

Additional information on the survey methodology may be found at <www.census.gov/construction/nrc/methodology.html>.

New Privately-Owned Housing Units Under Construction at End of Period

(Thousands of Units. Detail may not add to total because of rounding.)

Table 4a - Seasonally adjusted

Period	United States				Northeast		Midwest		South		West	
	Total	1 unit	2 to 4 units	5 units or more	Total	1 unit	Total	1 unit	Total	1 unit	Total	1 unit
2024												
January	1,670	684	S	969	207	65	209	91	777	351	477	177
February	1,657	686	S	954	205	66	206	91	774	353	472	176
March	1,641	692	S	933	208	67	201	91	774	359	458	175
April	1,611	681	S	915	207	65	196	92	757	351	451	173
May	1,592	676	S	901	209	66	191	89	745	347	447	174
June	1,570	661	S	894	211	65	176	84	743	341	440	171
July	1,547	643	S	888	222	64	178	84	720	328	427	167
August	1,523	642	S	864	234	66	180	86	689	325	420	165
September	1,490	644	S	828	230	68	178	86	676	326	406	164
October	1,463	640	S	806	225	67	180	86	664	325	394	162
November (r)	1,432	636	S	779	218	65	179	86	652	327	383	158
December (r)	1,429	644	S	767	220	63	177	84	662	338	370	159
2025												
January (p)	1,409	641	S	751	215	63	177	85	653	334	364	159
Average RSE (%) ¹	4	4	X	6	5	10	4	6	5	4	7	11
Percent Change ²												
Jan. 2025 from Dec. 2024	-1.4%	-0.5%	S	-2.1%	-2.3%	0.0%	0.0%	1.2%	-1.4%	-1.2%	-1.6%	0.0%
90 percent confidence interval ³	± 0.8	± 1.4	X	± 1.1	± 2.1	± 2.2	± 1.8	± 1.4	± 1.1	± 1.4	± 1.7	± 4.4
Jan. 2025 from Jan. 2024	-15.6%	-6.3%	S	-22.5%	3.9%	-3.1%	-15.3%	-6.6%	-16.0%	-4.8%	-23.7%	-10.2%
90 percent confidence interval ³	± 2.9	± 4.4	X	± 3.7	± 10.8	± 7.1	± 5.4	± 8.5	± 5.1	± 7.8	± 5.4	± 10.5

Table 4b - Not seasonally adjusted

Period	United States				Northeast		Midwest		South		West	
	Total	1 unit	2 to 4 units	5 units or more	Total	1 unit	Total	1 unit	Total	1 unit	Total	1 unit
2024												
January	1,647.4	664.6	17.2	965.6	205.6	64.5	206.0	88.1	765.6	340.7	470.3	171.3
February	1,635.4	664.2	17.4	953.8	203.6	64.2	200.1	84.9	764.9	344.1	466.8	171.0
March	1,624.6	673.4	15.9	935.3	207.1	65.7	195.2	85.3	767.3	351.0	455.1	171.4
April	1,609.1	673.0	15.0	921.1	207.1	64.5	192.4	87.3	757.8	349.0	451.7	172.2
May	1,598.6	676.6	15.3	906.8	209.7	65.4	190.7	87.9	749.3	348.5	448.9	174.7
June	1,586.0	671.3	15.0	899.7	211.1	64.5	178.4	85.2	752.3	348.0	444.2	173.5
July	1,565.4	658.6	16.4	890.4	223.2	64.4	181.1	87.0	729.3	335.8	431.7	171.3
August	1,537.0	657.0	17.2	862.8	234.0	66.4	183.0	88.8	696.5	332.9	423.5	168.9
September	1,504.9	661.2	17.6	826.1	231.1	69.7	181.2	89.2	683.4	334.3	409.2	168.0
October	1,473.0	651.5	17.5	804.0	225.6	67.8	185.0	91.1	668.2	329.6	394.2	163.0
November (r)	1,437.7	640.5	17.4	779.8	219.9	66.3	182.5	89.2	651.4	326.5	383.9	158.6
December (r)	1,403.7	624.7	17.4	761.6	218.1	62.5	176.5	83.8	646.1	324.4	363.0	154.1
2025												
January (p)	1,384.9	623.6	17.3	744.0	212.2	61.8	173.6	82.0	641.6	325.4	357.5	154.4
Average RSE (%) ¹	4	4	19	6	5	10	4	6	5	4	7	11

p Preliminary

r Revised

S Does not meet publication standards because tests for identifiable and stable seasonality do not meet reliability standards

X Not applicable

¹ Average relative standard error for the latest 6-month period

² Computed using unrounded data

³ See the Explanatory Notes in the accompanying text for an explanation of 90 percent confidence intervals

Source: U.S. Census Bureau and U.S. Department of Housing and Urban Development, New Residential Construction, February 19, 2025.

Additional information on the survey methodology may be found at <www.census.gov/construction/nrc/methodology.html>.

New Privately-Owned Housing Units Completed

(Thousands of Units. Detail may not add to total because of rounding.)

Table 5a - Seasonally adjusted annual rate

Period	United States				Northeast		Midwest		South		West	
	Total	1 unit	2 to 4 units	5 units or more	Total	1 unit	Total	1 unit	Total	1 unit	Total	1 unit
2024												
January	1,504	902	S	583	91	46	239	111	800	549	374	196
February	1,698	1,077	S	608	124	68	260	152	957	637	357	220
March	1,491	939	S	526	88	44	186	126	830	553	387	216
April	1,659	1,131	S	513	152	99	220	136	937	654	350	242
May	1,557	1,032	S	512	100	67	207	129	875	618	375	218
June	1,725	1,072	S	633	154	63	324	158	900	639	347	212
July	1,640	1,098	S	536	107	62	219	131	910	651	404	254
August	1,763	1,030	S	715	129	62	199	131	1,078	601	357	236
September	1,673	1,009	S	652	176	63	205	131	858	576	434	239
October	1,637	990	S	632	172	75	223	131	797	555	445	229
November (r)	1,622	1,015	S	589	171	55	178	132	889	584	384	244
December (r)	1,534	917	S	592	143	81	205	148	741	482	445	206
2025												
January (p)	1,651	982	S	652	185	59	195	123	800	538	471	262
Average RSE (%) ¹	7	6	X	17	20	21	12	10	10	9	11	10
Percent Change ²												
Jan. 2025 from Dec. 2024	7.6%	7.1%	S	10.1%	29.4%	-27.2%	-4.9%	-16.9%	8.0%	11.6%	5.8%	27.2%
90 percent confidence interval ³	± 8.4	± 8.3	X	± 19.1	± 44.2	± 25.9	± 18.9	± 12.2	± 12.3	± 11.5	± 16.9	± 22.5
Jan. 2025 from Jan. 2024	9.8%	8.9%	S	11.8%	103.3%	28.3%	-18.4%	10.8%	0.0%	-2.0%	25.9%	33.7%
90 percent confidence interval ³	± 14.0	± 12.9	X	± 31.2	± 100.5	± 56.6	± 39.7	± 29.5	± 13.7	± 13.0	± 28.7	± 38.6

Table 5b - Not seasonally adjusted

Period	United States				Northeast		Midwest		South		West	
	Total	1 unit	2 to 4 units	5 units or more	Total	1 unit	Total	1 unit	Total	1 unit	Total	1 unit
2023 Annual	1,448.8	998.9	11.7	438.3	116.2	61.3	192.0	126.2	809.6	597.7	331.0	213.6
2024 Annual (r)	1,626.9	1,017.0	16.7	593.3	134.5	66.0	222.8	135.4	880.2	589.1	389.4	226.4
RSE (%)	3	2	27	6	5	9	4	4	3	2	4	3
2024												
January	103.4	61.8	1.3	40.3	6.3	3.2	16.3	7.4	55.3	37.9	25.5	13.2
February	124.4	81.6	0.9	41.9	8.4	4.6	18.0	10.6	72.8	50.7	25.2	15.7
March	122.5	78.9	2.1	41.5	6.6	3.1	14.2	9.4	71.2	49.3	30.5	16.9
April	132.1	91.0	1.2	39.9	11.0	6.9	17.2	10.6	76.0	54.0	28.0	19.5
May	134.3	86.2	1.2	46.9	8.8	5.7	17.7	10.6	75.1	51.5	32.8	18.4
June	152.3	93.1	1.8	57.4	14.2	6.0	29.1	14.0	77.8	54.1	31.2	19.0
July	144.4	91.3	0.6	52.5	10.1	5.7	19.6	10.9	78.9	53.5	35.9	21.2
August	158.1	89.3	1.7	67.1	11.8	5.6	17.8	11.4	95.6	50.8	32.9	21.5
September	139.5	84.6	1.0	53.9	14.1	4.8	18.3	12.1	70.6	47.2	36.6	20.5
October	142.4	85.8	1.3	55.2	16.1	7.6	20.2	12.2	66.3	45.2	39.7	20.8
November (r)	130.6	85.1	1.4	44.2	13.7	5.0	15.3	11.8	71.0	48.1	30.7	20.2
December (r)	142.8	88.1	2.3	52.5	13.3	7.8	19.3	14.2	69.7	46.8	40.5	19.3
2025												
January (p)	112.7	66.1	1.2	45.4	12.5	3.8	13.1	8.1	54.6	36.3	32.5	18.0
Average RSE (%) ¹	7	6	44	17	20	21	12	10	10	9	11	10

p Preliminary

r Revised

S Does not meet publication standards because tests for identifiable and stable seasonality do not meet reliability standards

X Not applicable

¹ Average relative standard error for the latest 6-month period

² Computed using unrounded data

³ See the Explanatory Notes in the accompanying text for an explanation of 90 percent confidence intervals

Source: U.S. Census Bureau and U.S. Department of Housing and Urban Development, New Residential Construction, February 19, 2025.
Additional information on the survey methodology may be found at <www.census.gov/construction/nrc/methodology.html>.