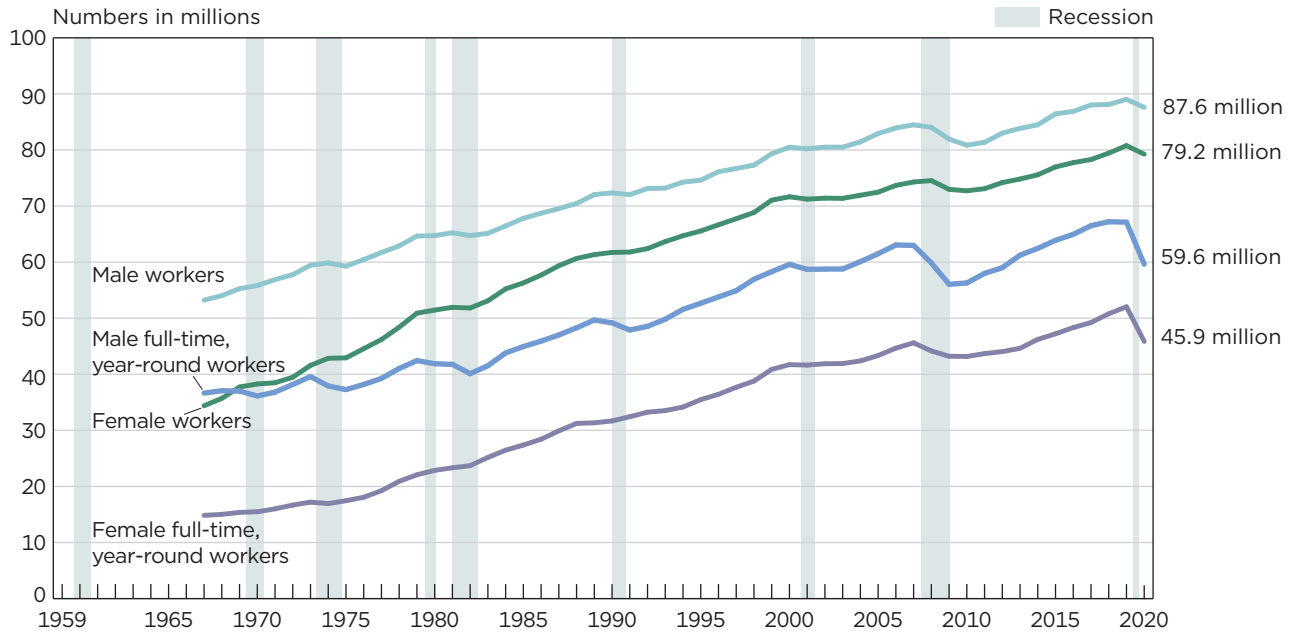


Figure 6.  
**Total and Full-Time, Year-Round Workers 15 Years and Older With Earnings by Sex: 1967 to 2020**  
 (People as of March of the following year)



Notes: The data for 2017 and beyond reflect the implementation of a new processing system. The data for 2013 and beyond reflect the implementation of the redesigned income questions. Refer to Table A-7 for historical footnotes. The data points are placed at the midpoints of the respective years. Data on earnings of full-time, year-round workers are not readily available before 1960. Data are for people aged 14 and older for years prior to 1980. More information on the CPI-U-RS dollar adjustment and recessions are available in Appendix A. Information on confidentiality protection, sampling error, nonsampling error, and definitions is available at <<https://www2.census.gov/programs-surveys/cps/techdocs/cpsmar21.pdf>>.

Source: U.S. Census Bureau, Current Population Survey, 1968 to 2021 Annual Social and Economic Supplements (CPS ASEC).