

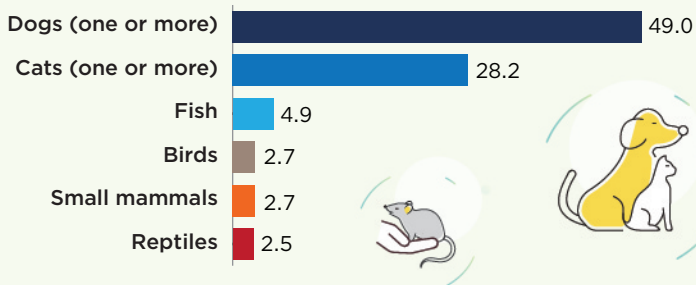
2021 HOUSEHOLD PETS

AHS respondents were asked if their household had any pets, including foster pets but excluding service animals and livestock such as cows, horses, and pigs. If pets are reported, respondents were asked how many dogs and cats were in their housing unit as well as if there were any small mammals, fish, birds, or reptiles. Figures may not add to total because more than one type of pet may apply to a housing unit. All percentages are rounded to the nearest whole number, with the exception of the header and metro graphic where they are rounded to the first decimal place. Metropolitan area definitions are consistent with the core-based statistical areas defined by the Office of Management and Budget in February 2013. More details on these definitions can be found at www.census.gov/programs-surveys/metro-micro.html.

APPROXIMATELY 63.8 MILLION (49.6 PERCENT) OF THE 128.5 MILLION OCCUPIED HOUSING UNITS HAVE AT LEAST ONE PET

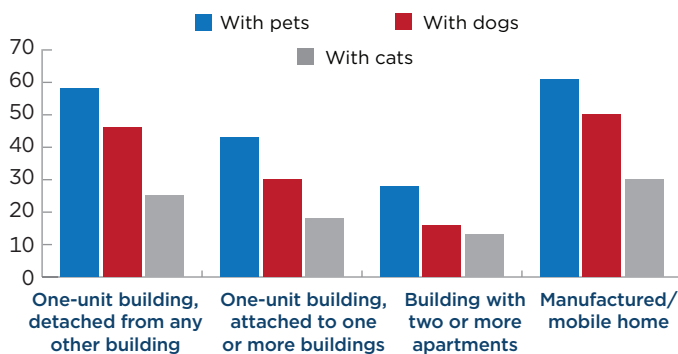
Dogs Are the Most Common Pets in the United States

Households with pets by type (millions)



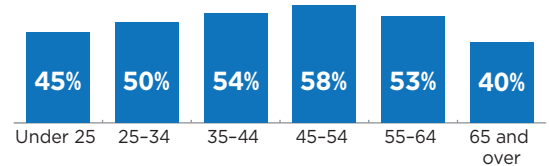
The Rate of Pet Ownership Is Highest Among Households Living in Mobile Homes at 61 Percent

Households with pets based on structure type



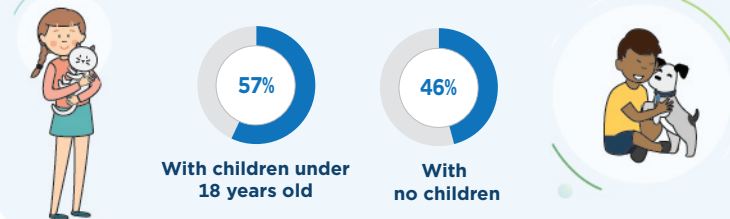
Adults Aged 45 to 54 Are More Likely Than Other Age Groups to Have Pets

Households with pets based on age group



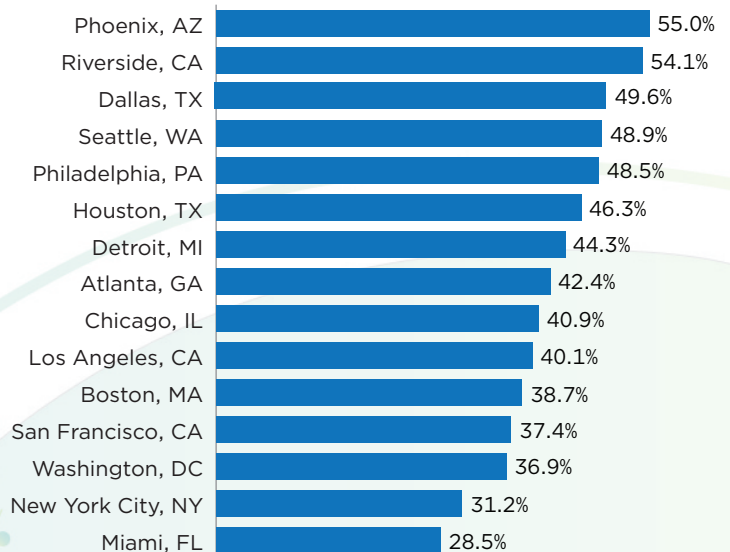
Families With Children Are More Likely to Have Pets

Households with pets based on presence of children



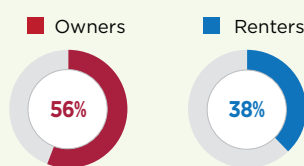
Phoenix and Riverside Have the Highest Pet Ownership Rates Among the Top 15 Largest Metro Areas

Households with pets by metro area



Homeowners Are More Likely to Have Pets

Households with pets based on tenure



Note: Information on confidentiality protection, methodology, sampling and nonsampling error, and definitions is available at www.census.gov/ahs. Source: U.S. Census Bureau and U.S. Department of Housing and Urban Development, 2021 American Housing Survey.