

**BUREAU OF THE CENSUS**

**STATISTICAL RESEARCH DIVISION REPORT SERIES**

**SRD Research Report Number: CENSUS/SRD/RR-84/29**

**Content Evaluation of the  
1977 Economic Censuses  
(DE2)**

by

**Carol Corby  
Statistical Research Division  
U.S. Bureau of the Census  
Room 3554, F.O.B. #3  
Washington, D.C. 20233**

**(301) 763-7088**

This series contains research reports, written by or in cooperation with staff members of the Statistical Research Division, whose content may be of interest to the general statistical research community. The views reflected in these reports are not necessarily those of the Census Bureau nor do they necessarily represent Census Bureau statistical policy or practice. Inquiries may be addressed to the author(s) or the SRD Report Series Coordinator, Statistical Research Division, Bureau of the Census, Washington, D.C. 20233.

Report issued:           October 9, 1984

## Abstract

The main purpose of the content evaluation was to provide a measure of the accuracy of the census items employment, payroll, and receipts. The universe of the project was a subset of establishments which responded to the census. Nonrespondents to the census and nonmail cases were not included in this study. Data were collected by means of personal visit interviews at national samples of establishments drawn from each trade area. Estimates of the total for each census item were prepared from reinterview data (assumed to be accurate) and from tabulation data (values actually used in census tabulations). The ratio of these two estimates, shown in the table below, is the measure of accuracy of the portion of the published census total that was tabulated from census respondents.

Excerpts from Tables 7.5a through 7.8d  
Ratios of Estimates of U.S. Totals

$$\hat{R} = \frac{\text{Total Reinterview}}{\text{Total Tabulation}}$$

(se of  $\hat{R}$ )

<u>Census Item</u>	<u>Retail Trade</u>	<u>Wholesale Trade</u>	<u>Selected Services</u>	<u>Manufactures</u>
Employment	.9885 (0.0099)	.9861** (0.0075)	.9931 (0.0237)	.9971 (0.0065)
First Quarter Payroll	.9765 (0.0174)	.9675* (0.0072)	1.0118 (0.0215)	not available
Annual Payroll	.9795 (0.0164)	.9940 (0.0050)	.9995 (0.0122)	1.0076 (0.0110)
Sales, Receipts or Value of Shipments	.9840* (0.0073)	.9347* (0.0192)	1.0324 (0.0338)	1.0452 (0.0311)

\* significantly different from 1.0 at  $\alpha = 0.05$

\*\* significantly different from 1.0 at  $\alpha = 0.10$

The ratios for retail sales, wholesale sales, wholesale employment, and wholesale first quarter payroll are significantly different from 1.0, indicating that, for these items, the respondent portion of the published total is too high.

The report also includes ratios of the reinterview total to the originally reported total and the tabulated total to the reported total. These ratios, combined with those shown above, indicate the following (< indicates ratios not significantly different from 1.0):

For retail sales and wholesale sales:

reported total < reinterview total < tabulation total

which suggests that census editing changes the data too far in the right direction.

For manufactures value of shipments:

reported total < tabulation total < reinterview total

which suggests that census editing goes in the right direction but not far enough.

For services receipts:

tabulation total < reported total < reinterview total

which suggests that census editing goes in the wrong direction.

## 1. Introduction

The content evaluation of the 1977 Economic Censuses had as its primary goal the measurement of the accuracy of published totals of employment, payroll, and receipts. This report presents the results of the project for the censuses of retail trade, wholesale trade, selected services, and manufactures.

Data were collected through personal visit interviews from samples of establishments which responded to the census in each of the trade areas. These data allowed for the construction of an accurate value (called reinterview data) for each census item for each sample establishment. Estimates of totals were computed using the reinterview data, data as originally reported on the census form (reported data), and data as used in census tabulations after census processing (tabulation data). The ratio of the reinterview total to the tabulation total for a particular census item was then used as a measure of the accuracy of the published figure for that item. It should be noted that the ratio represents the accuracy of only that portion of the published total that was tabulated from respondents to the census. Other evaluation projects examined the accuracy of the nonrespondent and nonmail portions of the published totals. Ratios of the reinterview total to the reported total and the tabulation total to the reported total were also examined along with ratios computed for single-unit or multi-unit establishments only.

The data collected included information on whether individual components of census items were included in the figures reported by an establishment on its census form. For example, questions were asked to determine whether a reported payroll figure included retirement contributions, bonuses, commissions, and vacation pay. This report shows the contribution each component made to the construction of accurate data from original reported data.

The results of the project are shown in Section 7 which starts on page 13.

## 2. The Questionnaires and Interviews

The project began with first drafts of the questionnaires and pretest interviews in December, 1977. Fifty-seven pretest interviews were conducted over five census areas by teams usually consisting of an analyst from an economic division and a researcher from an economic or research division. At several points during the pretesting, revisions were made to the draft questionnaires. The final questionnaires included detailed question on four items reported on the census form. These were employment for the pay period including March 12, first quarter payroll, annual payroll and total sales, receipts, or value of products shipped. Separate questionnaires were developed for each of the census areas to allow for tailoring of the questions to the different concepts used within each trade area. Within a census area, two versions of the questionnaire were printed, one for single-unit establishments and one for multi-unit establishments, with almost the same set of questions on each version. Each questionnaire followed the same general pattern: first, the reported figure was determined to be a book figure or an estimate. If it was an estimate, a better figure was requested (either a book figure, if possible, or a better estimate.) Then a series of questions were asked for each possible component of the reported figure. The determination was made as to whether a component was applicable to the establishment, and if so, whether it had been included in the reported figure. If the component had been included or excluded in error, according to census definitions, the amount of the error was requested. If an amount was provided by the respondent, a notation was made as to whether the amount was a book figure, a reliable estimate, or an unreliable estimate. The lists of components examined for the four census items are shown in Tables 7.5a through 7.8d, which are included in Section 7.

Training materials were developed from April, 1978 through the training sessions for Field Division (FLD) interviewers, which were held in July, August, and September, 1978. Interviewing by FLD interviewers started after the first training session and ended in September, 1979 completing interviews at most single-unit establishments and some small multi-unit establishments. Interviews at most multiunits and some complex or large single units were completed by members of Statistical Research Division (SRD), Business Division (BUS), Industry Division (IND), and Construction Statistics Division (CSD), between October, 1978 and April, 1980.

The interviews were conducted with a probing style and lasted anywhere from 30 minutes to 90 minutes. The interviewer was responsible for making sure the respondent understood the question, so rephrasing of the question or asking related questions was allowed. In addition, the interviewer had to decide whether a numerical answer was a book figure, a reliable estimate or unreliable, which often required some discussion of how the respondent had determined the figure. This judgement of the respondents' answers was the main reason for personal visit interviews, since it often required visual as well as verbal cues. Respondents were not deliberately made aware that we were looking for errors. Rather, the interviewer usually explained that we were looking for differences in definitions used by different companies.

### 3. The Final Data

The final data records used in the analysis were the product of several stages of processing. First, the raw questionnaire data (which included data originally reported on census forms) were edited for obvious errors, then coded and keyed. Keyed data were then edited for coding and keying errors, and edited for outliers and strange answers that couldn't be trusted. At this point, the reinterview value for each census item was constructed by correcting the originally reported value for each error made on a component included in the questionnaire. It should be noted that a correction was made only if the respondent had provided a book or a reliable amount. When the amount was unreliable or had not been provided (even when it was known that an error had been made), no correction could be made. After the reinterview values were constructed, the records were matched to census files containing data in the form used in tabulations for the census publications. This provided the tabulation values on the records. Further review was performed at this point on records showing large differences between reinterview data and reported or tabulation data. The final data record then contained the three versions, originally reported, reinterview, and tabulation, of each census item, as well as the components that went into the construction of the reinterview value.

### 4. The Universe and Sample Design

This report covers data from four separate universes: retail trade, wholesale trade, selected services, and manufactures. In general, each content evaluation universe included all establishments in the trade area which were mailed a census form except: nonrespondents to the census, establishments in Alaska and Hawaii, establishments with

no mail-out SIC or mailed in the wrong census, establishments which changed their identification number during processing, and miscellaneous other small subsets of the census mail universe. The universes are described in detail in a Memorandum for the Record from Carol Corby, July 8, 1981 (DE-2 Document 1, Revised).

For each census area (universe), the same sample design was used, so the design will be described here without reference to census area. The universe was first stratified into single-unit establishments, multi-unit establishments, and a certainty stratum containing a small number of very large establishments to be included in the sample with certainty. In the (noncertainty) multi-unit stratum, two systematic samples were drawn independently. The single-unit stratum was further stratified into groups of PSU's (groups of contiguous counties) according to the total number of establishments in each PSU. Within all but one single-unit stratum, a systematic unequal probability sample of PSU's was chosen, and within each sample PSU, two independent systematic samples of establishments were drawn. The single-unit stratum containing the most populated (with establishments) PSU's was designated a certainty stratum and all of its PSU's were included in the sample of PSU's. Again, within the PSU's, two systematic samples of establishments were drawn. The two samples drawn in each single-unit PSU and the multiunit stratum represent an original sample and a supplement sample as described below. The sample design is also described in detail in DE-2 Document 1. Section 6 of this report shows the final sample sizes for each universe. The sample design resulted in unequal weights for establishments in different single-unit strata. The range of weights is shown below:

**Table 4.1 Weights for Non-certainty Establishments**

Retail Trade		Selected Services	
Single units	370 to 373	Single units	480 to 495
Multiunits	1599	Multiunits	521
Wholesale Trade		Manufactures	
Single units	410 to 426	Single units	227 to 261
Multiunits	592	Multiunits	207

## 5. Estimators

This section contains a brief description of the ratio estimators used to compare the total of a census item computed from reinterview data and the total computed from tabulation data. Corresponding estimators were used to compare these totals to the total computed from originally reported data. A full description of the estimators is available in a memorandum from Carol Corby, July 8, 1981 (DE-2 Document 2 Revised).

For each of 8 strata (five single-unit noncertainty, one single-unit certainty, one multi-unit noncertainty, and one certainty) a total was computed for an item, such as annual payroll, using the reinterview data, then recomputed using the tabulation data. Below is the formula for a total for a single-unit noncertainty stratum. The formulas for other strata are simplifications of this.

$$\begin{aligned}
 X'_{hR} &= \sum_{j=1}^{m_h} \frac{1}{m_h p_{jh}} \sum_{i=1}^{n'_{jh}} \frac{1}{\frac{1}{k_{1jh}} + \frac{1}{k_{2jh}} - \frac{1}{k_{1jh}k_{2jh}}} X_{ijhR} \\
 &= \sum_{j=1}^{m_h} \frac{1}{m_h} X'_{jhR}
 \end{aligned}$$

where

- R = refers to reinterview data
- C = refers to data tabulated in the census
- h = h<sup>th</sup> stratum
- m<sub>h</sub> = number of PSU's drawn from h<sup>th</sup> single-unit stratum
- p<sub>jh</sub> = sampling probability for j<sup>th</sup> PSU in h<sup>th</sup> single-unit stratum
  
- n' <sub>jh</sub> = total of original oversample size and supplement sample size in jh<sup>th</sup> single-unit PSU
  
- k<sub>1jh</sub>, k<sub>2jh</sub> = sampling intervals used for original and supplement samples in jh<sup>th</sup> single-unit PSU

and

$$x_{ijhk} = \begin{cases} \text{reinterview value} & \text{if } i^{\text{th}} \text{ establishment is in-scope and} \\ & \text{responded to interview} \\ 0 & \text{if } i^{\text{th}} \text{ establishment is out-of-scope} \\ & \text{or nonrespondent to interview or if} \\ & x_{ijhC} = 0 \end{cases}$$

A corresponding formula is used for  $x'_{hC}$ . The final estimates of total for the item were:

$$x'_R = \sum_{h=1}^8 x'_{hR} \quad \text{and} \quad x'_C = \sum_{h=1}^8 x'_{hC}$$

The ratio estimator is then

$$\hat{R} = \frac{x'_R}{x'_C}$$

The estimator of the variance of  $\hat{R}$  was

$$\hat{\text{Var}}(\hat{R}) = (\hat{R})^2 \left( \frac{\hat{\text{Var}}(x'_R)}{(x'_R)^2} + \frac{\hat{\text{Var}}(x'_C)}{(x'_C)^2} - 2 \frac{\hat{\text{Cov}}(x'_R, x'_C)}{x'_R x'_C} \right),$$

where

$$\hat{\text{Var}}(x'_R) = \sum_{h=1}^7 \hat{\text{Var}}(x'_{hR}),$$

with a similar variance for  $x'_C$  (the 8<sup>th</sup> stratum was for certainty multiunits). Below is an example of the variance estimator for a single-unit noncertainty stratum.

$$\hat{\text{Var}}(x'_{hR}) = \left(1 - \frac{m_h}{M_h}\right) \frac{1}{m_h(m_h-1)} \sum_{j=1}^{m_h} (x'_{jhR} - x'_{hR})^2 + \sum_{j=1}^{m_h} (m_h p_{jh}) \hat{\sigma}_{2jh}^2$$

where

$$\hat{\sigma}_{2jh}^2 = N_{jh}^2 \left(1 - \frac{n'_{jh}}{N_{jh}}\right) \frac{1}{n'_{jh}} \left( \sum_{i=1}^{n'_{jh}-2} \frac{(x_{ijhR} - 2x_{(i+1)jhR} + x_{(i+2)jhR})^2}{6(n'_{jh}-2)} \right) \left(\frac{1}{m_h p_{jh}}\right)^2$$



The covariance term is developed from

$$\hat{\text{Cov}}(X_{\text{R}}^{\text{c}}, X_{\text{C}}^{\text{c}}) = \sum_{h=1}^7 \hat{\text{Cov}}(X_{\text{hR}}^{\text{c}}, X_{\text{hC}}^{\text{c}})$$

and substitutions of the variety

$$(X_{\text{jhR}}^{\text{c}} - X_{\text{hR}}^{\text{c}})(X_{\text{jhC}}^{\text{c}} - X_{\text{hC}}^{\text{c}}) \text{ for } (X_{\text{jhR}}^{\text{c}} - X_{\text{hR}}^{\text{c}})^2$$

in the terms of  $\hat{\text{Var}}(X_{\text{hR}}^{\text{c}})$ . These formulas are also shown in DE-2 Document 2.

## 6. Response Rates

The sample sizes and response rates are shown below in tables 6.1, 6.2, and 6.3. Since the samples were not self-weighting, establishments are not equally important to the results, so response rates are shown with and without using weights.

Table 6.1 shows the composition of the original oversamples taken from the frames which included out-of-scope establishments. The first column shows the original number of establishment records drawn in the sample. The next column shows the establishments that became out-of-scope of the content evaluation because of nonresponse to the census. The third column counts establishments which were out-of-scope of the content evaluation for any reason other than nonresponse to the census, including central administrative offices (CAO's), warehouses, establishments which changed their identification number during census processing, and establishments which were mailed out in the wrong census areas. Using retail trade single units as an example, 1,973 establishment records were drawn from the frame in the original sample, but only 1,069 (55.2 percent) of them ended up in the in-scope content evaluation sample. Table 6.2 shows the results of the interviews at the in-scope establishments. Of the 1,069 retail single units that needed to be interviewed, 999 (93.5 percent) were successfully interviewed and 70 (6.5 percent) were nonrespondents to the content evaluation survey. The third column represents refusals to the content evaluation survey. Most of the refusal rates are quite low, which is remarkable considering that the interviews were voluntary. The high level of cooperation is probably due to the fact that the interviews were follow-ups to the census with which our respondents had already cooperated. In addition, the appointments were arranged in a non-threatening manner and offered respondents an opportunity to offer their own comments about the government and the census.

Table 6.1 Original and Final Sample Sizes

Census		Number of Establishments in Original Oversamples (100%)	Number of Nonrespondents to Census (% of row)	Number of Establishments out-of-scope of Content Evaluation* (% of row)	In-Scope Establishments (% of row)
<b>Retail Trade</b>					
Single units	weighted	717,041	314,871 (43.9)	7,064 (1.0)	395,106 (55.1)
	unweighted	1,937	847 (43.7)	21 (1.1)	1,069 *(55.2)
Multiunits	weighted	383,772	84,747 (22.1)	3,199 (0.8)	295,826 (77.1)
	unweighted	252	53 (21.0)	3 (1.2)	196 (77.8)
Total	weighted	1,100,813	399,618 (36.3)	10,263 (0.9)	690,932 (62.8)
	unweighted	2,189	900 (41.1)	24 (1.1)	1,265 (57.8)
<b>Wholesale Trade</b>					
Single units	weighted	288,660	108,007 (37.4)	1,640 (0.6)	179,013 (62.0)
	unweighted	705	263 (37.3)	4 (0.6)	438 (62.1)
Multiunits	weighted	140,324	27,233 (19.4)	1,778 (1.3)	111,313 (79.3)
	unweighted	257	47 (18.3)	5 (1.9)	205 (79.8)
Total	weighted	428,984	135,240 (31.5)	3,418 (0.8)	290,326 (67.7)
	unweighted	962	310 (32.2)	9 (0.9)	643 (66.8)
<b>Selected Services</b>					
Single units	weighted	455,619	224,352 (49.2)	11,347 (2.5)	219,920 (48.3)
	unweighted	927	455 (49.1)	23 (2.5)	449 (48.4)
Multiunits	weighted	111,506	28,134 (25.2)	4,170 (3.7)	79,202 (71.0)
	unweighted	226	54 (23.9)	10 (4.4)	162 (71.7)
Total	weighted	567,125	252,486 (44.5)	15,517 (2.7)	299,122 (52.7)
	unweighted	1,153	509 (44.1)	33 (2.9)	611 (53.0)
<b>Manufactures</b>					
Single units	weighted	138,290	49,863 (36.1)	2,606 (1.9)	85,821 (62.1)
	unweighted	532	192 (36.1)	10 (1.9)	330 (62.0)
Multiunits	weighted	82,234	29,195 (35.5)	1,864 (2.3)	51,175 (62.2)
	unweighted	452 (33.0)	149 (2.2)	10 (64.8)	293
Total	weighted	220,524	79,058 (35.9)	4,470 (2.0)	136,996 (62.1)
	unweighted	984	341 (34.7)	20 (2.0)	623 (63.3)

\* C A O's, establishments mailed in wrong census, changed ID numbers, etc.

Table 6.2 Response Rates

Census		In Scope Establishments (100%)	Completed Interviews (% of row)	Refusals (% of row)	Out-of-Business, Other Non-Interview* (% of row)	Total Nonresponse (% of row)
<b>Retail Trade</b>						
Single units	weighted	395,106	369,101 (93.4)	9,287 (2.4)	16,718 (4.2)	26,005 (6.6)
	unweighted	1,069	999 (93.5)	25 (2.3)	45 (4.2)	70 (6.5)
Multiunits	weighted	295,826	289,430 (97.8)	4,797 (1.6)	1,599 (.5)	6,396 (2.2)
	unweighted	196	192 (98.0)	3 (1.5)	1 (.5)	4 (2.0)
Total	weighted	690,932	658,531 (95.3)	14,084 (2.0)	18,317 (2.7)	32,401 (4.7)
	unweighted	1,265	1,191 (94.2)	28 (2.2)	46 (3.6)	74 (5.8)
<b>Wholesale Trade</b>						
Single units	weighted	179,013	171,625 (95.9)	3,693 (2.1)	3,695 (2.1)	7,388 (4.1)
	unweighted	438	420 (95.9)	9 (2.1)	9 (2.1)	18 (4.1)
Multiunits	weighted	111,313	105,392 (94.7)	4,145 (3.7)	1,776 (1.6)	5,921 (5.3)
	unweighted	205	194 (94.6)	8 (3.9)	3 (1.5)	11 (5.4)
Total	weighted	290,326	277,017 (95.4)	7,838 (2.7)	5,471 (1.9)	13,309 (4.6)
	unweighted	643	614 (95.5)	17 (2.6)	12 (1.9)	29 (4.5)
<b>Selected Services</b>						
Single units	weighted	219,920	201,166 (91.5)	7,896 (3.6)	10,858 (4.9)	18,754 (8.5)
	unweighted	449	408 (90.9)	16 (3.6)	25 (5.6)	41 (9.1)
Multiunits	weighted	79,202	76,075 (96.1)	2,606 (3.3)	521 (0.7)	3,127 (3.9)
	unweighted	162	155 (95.7)	6 (3.7)	1 (0.6)	7 (4.3)
Total	weighted	299,122	277,241 (92.7)	10,502 (3.5)	11,379 (3.8)	21,881 (7.3)
	unweighted	611	563 (92.1)	22 (3.6)	26 (4.3)	48 (7.9)
<b>Manufactures</b>						
Single units	weighted	85,821	82,465 (96.1)	1,303 (1.5)	2,053 (2.4)	3,356 (3.9)
	unweighted	330	317 (96.1)	5 (1.5)	8 (2.4)	13 (3.9)
Multiunits	weighted	51,175	46,828 (91.5)	2,484 (4.9)	1,863 (3.6)	4,347 (8.5)
	unweighted	293	272 (92.8)	12 (4.1)	9 (3.1)	21 (7.2)
Total	weighted	136,996	129,293 (94.4)	3,787 (2.8)	3,916 (2.9)	7,703 (5.6)
	unweighted	623	589 (94.5)	17 (2.7)	17 (2.7)	34 (5.5)

\* Establishments in business in 1977 but out of business or otherwise not available for interviewing in 1978 or 1979

Another way of looking at response rates is through the data being collected rather than counts of establishments. Table 6.3 shows the response rates using the tabulation version of employment, first quarter payroll, annual payroll, and sales, rather than the counts of establishments. This shows how much of the published total for each census item is accounted for by establishment in each response category. For example, of the \$524 billion of retail sales represented by the in-scope sample of establishments, \$509 billion (97.1 percent) are covered by survey respondents and \$15 billion (2.9 percent) are unaccounted for due to nonresponse to the survey. In the case of retail trade the response rate for dollars of sales (97.1 percent) is higher than the response rate based on establishment counts (94.2 percent unweighted and 95.3 percent weighted total response) from table 6.2. This is true also for services and manufacturers. However, for wholesale trade the response rate based on dollar of sales (86.1 percent) is considerably lower than the response rate from establishment counts (95.5 percent). It is not clear why this happened. It is interesting to note also that as is shown in Section 7, wholesale trade has a significant amount of error in the tabulation data for sales, which were used for table 6.3 (see table 7.1b).

Table 6.3 Totals (weighted) of Tabulation Values for Census Items  
by Response Category

	In Scope Establishments (100%)	Completed Interviews (% of row)	Refusals (% of row)	Out of Business, Other Non-interviews (% of row)	Total Nonresponse (% of row)
<b>Retail Trade</b>					
Employment	9,589,493	9,277,476 (96.7)	186,951 (1.9)	125,066 (1.3)	312,017 (3.3)
First quarter payroll (\$1,000)	14,848,258	14,469,996 (97.5)	234,403 (1.6)	143,859 (1.0)	378,262 (2.5)
Annual payroll (\$1,000)	64,853,606	63,140,457 (97.4)	1,130,541 (1.7)	582,608 (0.9)	1,713,149 (2.6)
Sales (\$1,000)	524,259,170	509,208,735 (97.1)	9,589,763 (1.8)	5,460,672 (1.0)	15,050,435 (2.9)
<b>Wholesale Trade</b>					
Employment	3,449,420	3,207,205 (93.0)	124,594 (3.6)	117,621 (3.4)	242,215 (7.0)
First quarter payroll (\$1,000)	11,224,685	10,548,277 (94.0)	504,815 (4.5)	171,593 (1.5)	676,408 (6.0)
Annual payroll (\$1,000)	46,563,545	43,752,588 (94.0)	2,120,293 (4.6)	690,664 (1.5)	2,810,957 (6.0)
Sales (\$1,000)	910,769,686	784,439,286 (86.1)	116,325,973 (12.8)	10,004,427 (1.1)	126,330,400 (13.9)
<b>Selected Services</b>					
Employment	3,519,070	3,379,187 (96.0)	95,530 (2.7)	44,353 (1.3)	139,883 (4.0)
First quarter payroll (\$1,000)	7,806,283	7,524,808 (96.4)	178,106 (2.3)	103,369 (1.3)	281,475 (3.6)
Annual payroll (\$1,000)	34,105,762 (96.8)	33,007,113 (1.8)	629,344 (1.4)	469,305 (3.2)	1,098,649
Receipts (\$1,000)	96,658,013	92,785,717 (96.0)	2,317,772 (2.4)	1,554,524 (1.6)	3,872,296 (4.0)
<b>Manufactures</b>					
Employment	15,094,824	14,658,087 (97.1)	271,541 (1.8)	165,196 (1.1)	436,737 (2.9)
Annual payroll (\$1,000)	212,515,027	208,007,867 (97.9)	3,006,632 (1.4)	1,500,528 (0.7)	4,507,160 (2.1)
Value of products shipped (\$1,000)	1,180,188,440	1,137,789,012 (96.4)	26,560,540 (2.3)	15,838,888 (1.3)	42,399,428 (3.6)

## 7. Main Results

The main results of this project are three ratios of estimates of total for each census item based on the originally reported, reinterview, and tabulation versions of the data. Since these ratios were obtained from a universe of respondents to the census, they reflect on only the respondent portion of any related figures published in the census. The first ratio compares the reinterview data (the truth) to the tabulation data and is defined as follows:

$$\hat{R}_1 = \frac{X_{\text{rein}}}{X_{\text{tab}}} = \begin{array}{l} \text{ratio of estimates of total from} \\ \text{Reinterview data to data as used} \\ \text{in Tabulations} \end{array}$$

This ratio is a measure of the accuracy of the published data for respondents to the census. It is not a measure of respondent error directly however, since it does not separate respondent error from editing during census processing. The reinterview data are assumed to be the truth but are more correctly considered to be as accurate as it is possible for the Bureau to collect.

The closer  $\hat{R}_1$  is to 1.0, the more accurate is the respondent portion of the published U.S. total for the census item. In particular, if  $\hat{R}_1 < 1.0$ , the reinterview total is smaller than the tabulation total, indicating that the respondent portion of the published census data is too high. Similarly, if  $\hat{R}_1 > 1.0$ , the published census data is too low. In Tables 7.1a through 7.1d, some ratios tested to be significantly different from 1.0 (marked with \* or \*\*), indicating that the respondent portion of the published figure is in error. The ratios that were not significantly different from 1.0 indicate census items for which the evaluation survey did not detect measurable errors.

The second ratio measures respondent error by comparing reinterviews data (truth) to originally reported data as follows:

$$\hat{R}_2 = \frac{X_{\text{rein}}}{X_{\text{rep}}} = \begin{array}{l} \text{ratio of estimates of total from} \\ \text{Reinterview data and originally reported} \\ \text{data (before census editing)} \end{array}$$

This ratio is a measure of respondent error without regard to any improvements that can be made by editing. It is not a measure of respondent error in the published tables, since it is not calculated from tabulation data. The ratios that are significantly different from 1.0 are marked with \* or \*\*. A value of  $\hat{R}_2$  very close to 1.0 would be an indication of a census item for which the reported data did not need much editing before publication.

The third ratio compares originally reported data to tabulation data as follows:

$$\hat{R}_3 = \frac{\bar{X}_{\text{tab}}}{\bar{X}_{\text{rep}}} = \text{ratio of estimates of total from Tabulation data and originally Reported data.}$$

This ratio is a measure of the effect of census editing on originally reported data. It can be considered a measure of editing activity but not a measure of the accuracy of census editing, since neither the reported total nor tabulation total is assumed to be correct. If  $\hat{R}_1 > 1.0$ , the census processing increased the data from what was originally reported. If  $\hat{R}_1 < 1.0$ , the processing decreased the data from what was reported. An  $\hat{R}_1$  very close to 1.0 would indicate that the census processing, while maybe causing many changes to the data, had very little overall effect on the data.

Table 7.1a through 7.1d present the three ratios for each census item in each census area. Notice in Table 7.1a, which shows ratios for retail trade,  $\hat{R}_1$  for sales is significantly different from 1.0, indicating that the respondent portion of the published U.S. total retail sales is in error. Since  $\hat{R}_1$  is less than 1.0, the published amount is too high. For wholesale trade in Table 7.1b, three census items (employment, first quarter payroll, and sales) show significant ratios which are also less than 1.0, indicating that tabulation data for respondents is too high. In Tables 7.1c and 7.1d, for services and manufactures data,  $\hat{R}_1$  is never significantly different from 1.0. The non-significant  $\hat{R}_1$  values indicate that the respondent of the published U.S. totals are reasonably close to their true totals.

**Table 7.1a Ratios of Estimates of U.S. Totals  
Retail Trade**

Census Item	$\hat{R}_1 = \frac{X'_{rein}}{X'_{tab}}$ (s.e. of $\hat{R}$ )	$\hat{R}_2 = \frac{X'_{rein}}{X'_{rep}}$ (s.e. of $\hat{R}$ )	$\hat{R}_3 = \frac{X'_{tab}}{X'_{rep}}$ (s.e. of $\hat{R}$ )
March Employment	.9885 (0.0099)	.9937 (0.0098)	1.0074 (0.0103)
First Quarter Payroll	.9765 (0.0174)	.9930 (0.0061)	1.0246 (0.0186)
Annual Payroll	.9795 (0.0164)	.9937 (0.0092)	1.0167 (0.0184)
Sales	.9840* (0.0073)	1.0024 (0.0039)	1.0134* (0.0064)

**Table 7.1b Ratios of Estimates of U.S. Totals  
Wholesale Trade**

Census Item	$\hat{R}_1 = \frac{X'_{rein}}{X'_{tab}}$ (s.e. of $\hat{R}$ )	$\hat{R}_2 = \frac{X'_{rein}}{X'_{rep}}$ (s.e. of $\hat{R}$ )	$\hat{R}_3 = \frac{X'_{tab}}{X'_{rep}}$ (s.e. of $\hat{R}$ )
March Employment	.9861** (0.0075)	.9979 (0.0088)	1.0104 (0.0093)
First Quarter Payroll	.9675* (0.0072)	.9846** (0.0092)	1.0126 (0.0092)
Annual Payroll	.9940 (0.0050)	.9916 (0.0075)	.9968 (0.0073)
Sales	.9347* (0.0192)	1.0027 (0.0045)	1.0584* (0.0206)

\* significant at  $\alpha = 0.05$

\*\* significant at  $\alpha = 0.10$



**Table 7.1c Ratios of Estimates of U.S. Totals  
Selected Services**

Census Item	$\hat{R}_1 = \frac{X'_{rein}}{X'_{tab}}$ (s.e. of $\hat{R}$ )	$\hat{R}_2 = \frac{X'_{rein}}{X'_{rep}}$ (s.e. of $\hat{R}$ )	$\hat{R}_3 = \frac{X'_{tab}}{X'_{rep}}$ (s.e. of $\hat{R}$ )
March Employment	.9931 (0.0237)	1.0050 (0.0232)	1.0109 (0.0080)
First Quarter Payroll	1.0118 (0.0215)	1.0196** (0.0103)	1.0025 (0.0209)
Annual Payroll	.9995 (0.0122)	1.0132** (0.0073)	1.0125 (0.0112)
Receipts	1.0324 (0.0338)	1.0042** (0.0024)	.9768 (0.0322)

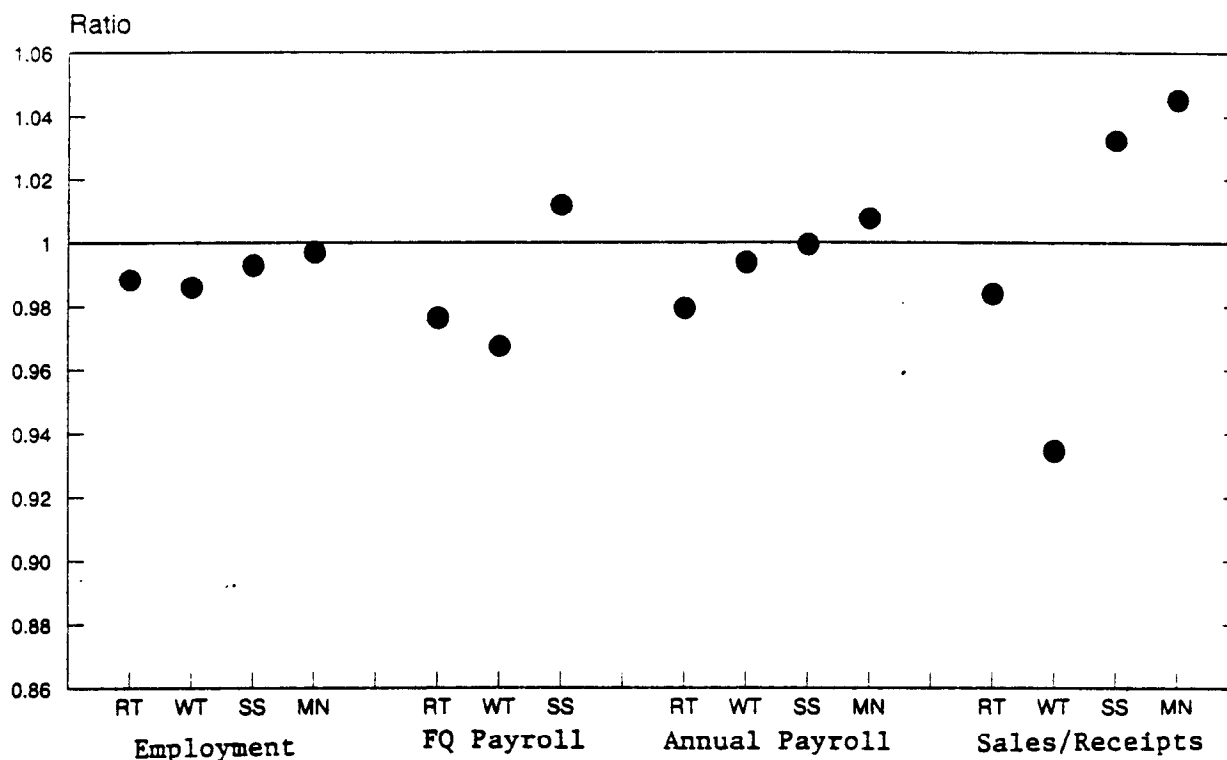
**Table 7.1d Ratios of Estimates of U.S. Totals  
Manufactures**

Census Item	$\hat{R}_1 = \frac{X'_{rein}}{X'_{tab}}$ (s.e. of $\hat{R}$ )	$\hat{R}_2 = \frac{X'_{rein}}{X'_{rep}}$ (s.e. of $\hat{R}$ )	$\hat{R}_3 = \frac{X'_{tab}}{X'_{rep}}$ (s.e. of $\hat{R}$ )
March Employment	.9971 (0.0065)	.9919 (0.0052)	.9954 (0.0037)
Annual Payroll	1.0076 (0.0110)	1.0073 (0.0101)	1.00004 (0.0044)
Value of Products Shipped	1.0452 (0.0311)	1.0346 (0.0295)	1.0002 (0.0014)

\*\* significant at  $\alpha = 0.10$

Graph 7.2 below shows the values for  $\hat{R}_1$  for all census items studied. Most of the ratios fall below 1.0 indicating that, for most items, the census editing increases the originally reported data beyond the true total for the item as estimated by the evaluation survey.

**Graph 7.2**  
**Ratios of Reinterview Total to Tabulation Total**



If one temporarily ignores the results of the significance tests in Tables 7.1a through 7.1d, ratios can be studied in pairs to deduce relationships between the totals calculated from the three versions of the data. The relationships between Reinterview total, Tabulation total, and originally Reported total are shown below in Table 7.3. A < sign is used to denote a relationship that was based on a nonsignificant ratio.

Table 7.3 Relationships Between Totals of Reported, Reinterview, and Tabulated Data

Census Item	Relationship	Ratio Used		
		$\hat{R}_1 = \frac{X^-_{rein}}{X^-_{tab}}$	$\hat{R}_2 = \frac{X^-_{rein}}{X^-_{rep}}$	$\hat{R}_3 = \frac{X^-_{tab}}{X^-_{rep}}$
<b>Retail:</b>				
employment	rein. total < rep. total < tab. total		X	X
F.Q. payroll	rein. total < rep. total < tab. total		X	X
annual payroll	rein. total < rep. total < tab. total		X	X
sales	rep. total < rein. total < tab. total	X	X	
<b>Wholesale:</b>				
employment	rein. total < rep. total < tab. total		X	X
F.Q. payroll	rein. total < rep. total < tab. total		X	X
annual payroll	rein. total < tab. total < rep. total	X		X
sales	rep. total < rein. total < tab. total	X	X	
<b>Services:</b>				
employment	rep. total < rein. total < tab. total	X		X
F.Q. payroll	rep. total < tab. total < rein. total	X		X
annual payroll	rep. total < rein. total < tab. total	X	X	
receipts	tab. total < rep. total < rein. total		X	X
<b>Manufactures:</b>				
employment	rein. total < tab. total < rep. total	X		X
annual payroll	rep. total < tab. total < rein. total	X		X
value of products shipped	rep. total < tab. total < rein. total	X		X

The relationships in Table 7.3 offer an indication of the effectiveness of the editing of reported data during census processing, as follows:

1. Census editing changes the reported data too far in the right direction for the items

- retail sales
- wholesale sales
- services employment
- services annual payroll

2. Census editing appears to change the data in the right direction but not far enough for the items

- wholesale annual payroll
- services F.Q. payroll
- manufactures annual payroll
- manufactures value of shipments
- manufactures employment

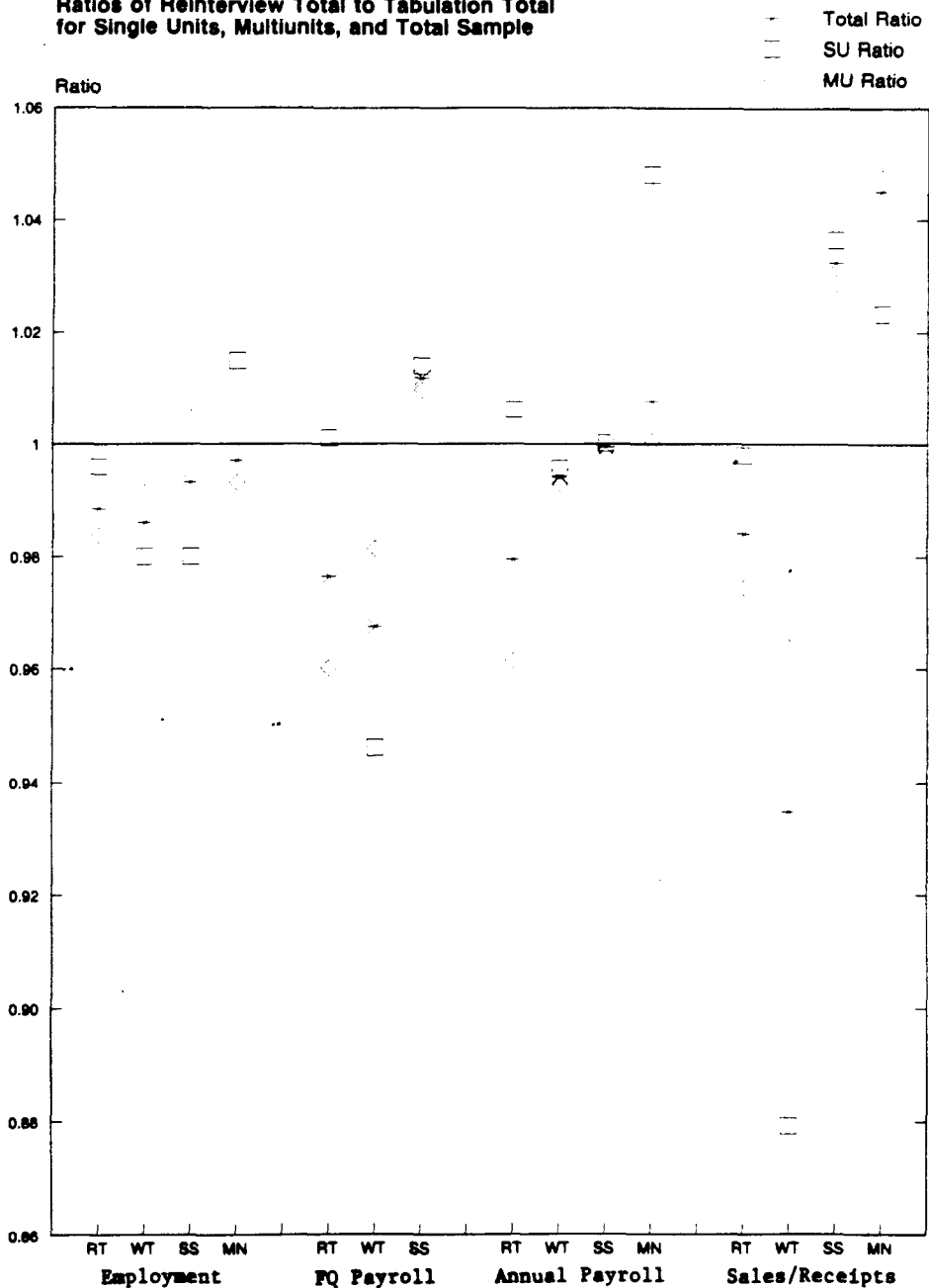
3. Census editing appears to change the data in the wrong direction for the items

- retail employment
- retail F.Q. payroll
- retail annual payroll
- wholesale employment
- wholesale F.Q. payroll
- services receipts

The ratios in Tables 7.1a through 7.1d have also been computed separately for single units and multiunits and are summarized in graph 7.4 below. Complete tables for single units and multiunits are provided in Appendix A. Once again, if one suspends reliance on significance tests, the single-unit and multi-unit versions of  $\hat{R}_1$  can be compared to the complete sample  $\hat{R}_1$ . For each census item, the ratios falling below the 1.0 line represent tabulation data that are too high (becoming higher as the point drops below the line) and the ratios above the line represent tabulation data that are too low. It is

interesting to notice the items such as employment for services and manufactures for which the single-unit ratios are on opposite sides of the 1.0 line from the multi-unit ratios. This is an indication that, in the published totals, data from one group (single units or multiunits) were too high and data from the other group were too low, partially cancelling each other out.

Graph 7.4  
Ratios of Reinterview Total to Tabulation Total  
for Single Units, Multiunits, and Total Sample



The next set of tables shows the breakdown of errors found during the content evaluation interviewing. For each census item, there is a table below listing all of the components which should have been included or excluded according to census definitions, along with the total correction made to reported data for each component. The four columns of these tables (7.5a through 7.8d) are defined as follows:

Number of Eligible Cases	-	number of establishments to which the components applied. These establishments had the opportunity to make an error by including or excluding the component in each row.
Number of Cases Requiring Corrections	-	number of establishments which indicated that an error had been made for the component in each row.
Number of Cases Providing Book or Reliable Correction	-	number of establishments which, after admitting that an error had been made, were able to provide a book figure or reliable estimate of the correction that was needed for the component in each row.
Total Correction For Component	-	sum of book or reliable corrections provided by respondents for errors in the component in each row.

The reader should keep the following in mind for Tables 7.5a through 7.8d:

1. Notice the total number of cases included in a particular table, shown below the title of each table. The number of establishments varies between tables within a trade area due to item nonresponse on the census form and during the evaluation interviews. For example, 1,166 establishments are included in table 7.5a, but only 1,162 in table 7.6a, although both tables came from the same sample. This means that 4 establishments that were in table 7.5a were dropped out of table 7.6a because neither originally reported nor reinterview values were available for first quarter payroll.

2. The first component row in each table is a correction for the situation where an item was not reported on the census form, but was provided for the first time during the content evaluation interview. This comes from item nonresponse on the census form, rather than complete nonresponse to the census. These cases are included in the content evaluation because interviews could be successfully conducted (not true for nonrespondents to the census), and reinterview data could be compared to tabulation data that were imputed during census processing.
3. The second component in each table is a correction for the situation where the originally reported figures were estimates and the respondents were able to provide book figures or better estimates for the census item. All following components are corrections to these improved figures. The total correction for this component in any one table is a mixture of positive and negative changes, so while one table may show a positive correction, another may show a negative correction. Also, for one table, the unweighted and weighted versions of the correction may be of opposite sign (such as 7.6b - retail trade first quarter payroll), which may happen when an establishment with a low weight has a large correction of opposite sign to corrections for other establishments with high weights.
4. For components 1 and 2, the number of eligible cases and the number of cases requiring correction are identical due to the definition of the components. This is not true for other components.
5. Weighted and unweighted versions of the corrections have been shown because the wide range of weights used tends to disguise whether a large correction came from a small number of high-weight establishments or a larger number of low-weight establishments. The two versions also help to indicate where a component is important for single units, multiunits, or certainty cases (very large establishments).

The purpose of studying individual errors in reported census items was to determine which errors were important and what could be done to reduce or eliminate them. It was hoped that a few components would be responsible for most of the reporting errors. The following tables of components (7.5a through 7.8d) indicate that this is not the case and there is probably no easy way to significantly reduce respondent error by making simple changes to the census forms or instructions. This is based on three observations from the

tables. First, almost all components except 1 and 2 (item nonresponse and estimation on the census form) show errors for very few establishments relative to the sample size, and the corrections for these components are relatively small. This implies that changes in the census forms or instructions to better explain components will improve response accuracy only if most of the components are addressed. Thus the census material would become considerably more complex and lengthy, which would lead to other response problems. Sales tax in retail sales appears to be the only individual component for which an improvement in the reported data can be obtained from a simple change to forms or instructions.

The second observation from the tables is that the mixture of positive and negative corrections to a census item causes a lot of individual errors to cancel each other out. For example, corrections for components 8 and 28 in Table 7.7a (retail annual payroll) are close in size but of opposite sign and together do not contribute much to error in the census publications. This mixture of positive and negative errors is another indication that most or all components must be addressed by improvements to the census forms or instructions. In fact, if better instructions are provided for only certain components, say only positive ones, the total error in the reported data could increase, since some of the cancelling out will be eliminated.

Third, some components show a large difference between the number of establishments which made errors and the number which could provide useable corrections, such as component 6 in Table 7.5a (temporary or part-time workers excluded from retail employment) or component 22 in Table 7.6a (compensation in kind excluded from retail first quarter payroll). These errors probably cannot be reduced by changes in the census forms or instruction, since most respondents cannot include or exclude these components any differently in the future than they already have.

Following Tables 7.5a through 7.8d are Appendices A and B which show the results presented in this section separated by single units and multiunits. Appendix C is a reproduction of one of the questionnaires used during the interviewing.



Table 7.5a Components of Total Correction  
Retail Trade - Employment

(Total number of cases = 646,673 weighted and 1,166 unweighted)

Component included in reported figure in error or excluded from reported figure in error)		Number of Eligible Cases	Number of Cases Requiring Correction	Number of Cases Providing Book or Reliable Correction	Total Correction For Component (number of employees)
1. Correction for item non-response on census form	weighted unweighted	21,971 36	21,971 36	21,971 36	218,883 381
2. Correction for estimation on census form	weighted unweighted	49,938 69	49,938 69	27,995 40	-82,450 -17
3. Persons on paid leave (sick holiday, vacation) excluded	weighted unweighted	496,519 838	8,738 8	371 1	371 1
4. Persons working at establishment but excluded*	weighted unweighted	608,555 1,110	16,658 25	7,399 10	13,199 19
5. Persons working at another establishment of same company but included for sample establishment	weighted unweighted	237,209 171	1,599 1	1,599 1	-4,797 -3
5. Temporary or part-time workers not included at all	weighted unweighted	541,358 952	11,974 21	3,086 5	4,574 9
7. Correction for temporary or part-time workers included by full-time equivalent count	weighted unweighted	10,112 14	10,112 14	10,112 14	9,029 21
8. Persons employed by establishment but supplied to different company and excluded*	weighted unweighted	4,685 7	1,971 3	0 0	0 0
9. Persons employed by different company; supplied to sample establishment and included*	weighted unweighted	87,756 111	2 2	0 0	0 0
10. Corporate officers or executives excluded	weighted unweighted	283,955 555	14,579 26	13,463 23	18,301 36
11. Partners or proprietors included	weighted unweighted	178,168 444	11,270 28	10,154 25	-13,984 -32
12. Persons still paid while temporarily away from job, excluded*	weighted unweighted	167,354 165	3,198 2	0 0	0 0
<b>Total Correction for Components 2 - 12</b>				<b>weighted unweighted</b>	<b>-55,757 34</b>

\*Examples:

4 Management trainees counted at headquarters

8 or 9 Janitorial Service workers, temporary secretarial service workers, maintenance or repair workers

12 Jury duty or military reserve training

Table 7.6a Components of Total Correction  
Retail Trade - First Quarter Payroll

(Total number of cases = 643,215 weighted and 1,162 unweighted)

Component (included in reported figure in error or excluded from reported figure in error)		Number of Eligible Cases	Number of Cases Requiring Correction	Number of Cases Providing Book or Reliable Correction	Total Correction For Component (dollars of payroll)
1. Correction for item non- response on census form	weighted	32,130	32,130	32,130	\$477,004,000
	unweighted	61	61	61	3,106,160
2. Correction for estimation on census form	weighted	62,496	62,496	45,578	-99,483,000
	unweighted	113	113	84	916,495
3. Payroll for persons working at establishment but excluded**	weighted	609,781	8,140	2,714	4,458,000
	unweighted	1,113	12	4	4,566
4. Payroll for persons working at another establishment of same company but included**	weighted	240,411	3,198	1,599	-8,906,000
	unweighted	175	2	1	-5,570
5. Payroll for temporary or part-time workers, excluded**	weighted	539,499	5,429	0	0
	unweighted	948	9	0	0
6. Payroll for persons em- ployed by establishment but supplied to different company excluded**	weighted	4,685	1,971	0	0
	unweighted	7	3	0	0
7. Payroll for persons em- ployed by different company, supplied to sample establishment included**	weighted	84,188	373	372	-558,000
	unweighted	109	2	1	-1,500
8. Payroll for corporate officers or executives, excluded**	weighted	284,438	10,970	5,911	33,861,000
	unweighted	553	13	6	34,172
9. Payments to partners or proprietors, included**	weighted	176,682	5,949	5,205	-15,460,000
	unweighted	441	17	15	-55,578
10. Payroll for persons still paid while temporarily away from job, excluded**	weighted	175,792	1,971	0	0
	unweighted	191	2	0	0
11. Retirement contributions excluded	weighted	83,772	10,112	3,831	2,831,000
	unweighted	97	15	8	218,869
12. Employees' portion of group insurance premiums excluded	weighted	257,743	20,855	886	6,648,000
	unweighted	318	33	22	14,252
13. Union dues excluded	weighted	45,066	372	0	0
	unweighted	48	1	0	0
14. Savings bonds, savings allotments, excluded	weighted	109,156	0	0	0
	unweighted	91	0	0	0
15. Charitable contributions excluded	weighted	104,138	372	0	0
	unweighted	93	1	0	0

Table 7.6a Components of Total Correction  
Retail Trade - First Quarter Payroll  
Continued

Component (included in reported figure in error or excluded from reported figure in error)		Number of Eligible Cases	Number of Cases Requiring Correction	Number of Cases Providing Book or Reliable Correction	Total Correction For Component (dollars of payroll)	
16. Garnishments excluded*	weighted	128,453	0	0	0	
	unweighted	133	0	0	0	
17. Employees' portion of FICA payments excluded	weighted	639,275	3,343	1,859	\$884,000	
	unweighted	1,158	9	5	2,375	
18. Withholding taxes excluded	weighted	638,902	2,972	1,488	1,545,000	
	unweighted	1,157	8	4	4,150	
19. Tips reported to employer excluded	weighted	79,681	10,972	1,488	1,267,000	
	unweighted	148	13	4	3,407	
20. Bonuses excluded	weighted	365,691	14,169	0	0	
	unweighted	586	15	0	0	
21. Commissions excluded	weighted	185,584	1,489	372	5,338,000	
	unweighted	286	4	1	14,350	
22. Compensation in kind excluded*	weighted	61,084	15,055	1,113	1,160,000	
	unweighted	96	24	3	3,126	
23. Dismissed or severance pay excluded	weighted	207,845	371	0	0	
	unweighted	243	1	0	0	
24. Vacation pay excluded	weighted	530,908	3,940	0	0	
	unweighted	914	4	0	0	
25. Holiday pay excluded	weighted	494,041	3,569	1,599	160,000	
	unweighted	829	3	1	100	
26. Sick leave pay excluded	weighted	403,276	3,569	0	0	
	unweighted	639	3	0	0	
27. Payments from Expense Accounts included	weighted	380,255	5,169	0	0	
	unweighted	641	4	0	0	
28. Employers' costs for fringe benefits included	weighted	612,357	22,792	16,880	-29,801,000	
	unweighted	1,111	26	20	-433,898	
29. Retroactive payments paid in 1977 for work performed in 1976, included	weighted	584,085	3,200	1	-755,000	
	unweighted	1,097	4	1	-754,837	
30. Retroactive payments paid in 1978 for work performed in 1977, excluded	weighted	584,456	3,571	373	17,000	
	unweighted	1,096	3	1	46	
				<b>Total Correction for Components 2 - 30</b>	<b>weighted unweighted</b>	<b>\$-96,794,000 -35,475</b>

## \* Examples:

16. Court awarded child support withheld from pay check.  
22. Holiday turkeys, meals for restaurants workers.  
29, 30 Court awarded back pay.

\*\* correction is for payroll amounts included in or excluded from reported figure, regardless of whether corresponding employees were included in or excluded from reported employment figure, see examples table 7.5a.

**Table 7.7a Components of Total Correction  
Retail Trade - Annual Payroll**

(Total number of cases = 653,960 weighted and 1,182 unweighted)

Component (included in reported figure in error or excluded from reported figure in error)		Number of Eligible Cases	Number of Cases Requiring Correction	Number of Cases Providing Book or Reliable Correction	Total Correction For Component (dollars of payroll)
1. Correction for item non- response on census form	weighted	19,896	19,896	19,896	\$1,253,848,000
	unweighted	38	38	38	9,073,138
2. Correction for estimation on census form	weighted	65,242	65,242	53,011	-578,512,000
	unweighted	128	128	105	-4,171,715
3. Payroll for persons working at establishment but excluded**	weighted	618,927	8,512	4,313	111,748,000
	unweighted	1,132	13	5	72,814
4. Payroll for persons working at another establishment of same company but included**	weighted	243,980	3,198	1,599	-40,060,000
	unweighted	178	2	1	-25,053
5. Payroll for temporary or part-time workers, excluded**	weighted	549,501	5,429	743	4,176,000
	unweighted	966	9	2	11,240
6. Payroll for persons em- ployed by establishment but supplied to different company, excluded**	weighted	4,685	1,971	0	0
	unweighted	7	3	0	0
7. Payroll for persons em- ployed by different company, supplied to sample establishment, included**	weighted	84,560	373	372	-2,604,000
	unweighted	110	2	1	-7,000
8. Payroll for corporate officers or executives, excluded**	weighted	287,410	12,084	6,282	134,910,000
	unweighted	561	16	7	135,249
9. Payments to partners or proprietors, included**	weighted	178,913	5,949	5,205	-65,740,000
	unweighted	447	17	15	-218,857
10. Payroll for persons still paid while temporarily away from job, excluded**	weighted	179,363	1,971	0	0
	unweighted	194	2	0	0
11. Retirement contributions excluded	weighted	84,143	11,226	8,514	30,749,000
	unweighted	98	18	14	997,268
12. Employees' portion of group insurance premiums excluded	weighted	261,683	21,226	16,171	31,066,000
	unweighted	322	34	27	65,877
13. Union dues excluded	weighted	45,066	743	0	0
	unweighted	48	2	0	0
14. Savings bonds, savings allotments, excluded	weighted	110,755	0	0	0
	unweighted	92	0	0	0
15. Charitable contributions excluded	weighted	104,138	743	371	167,000
	unweighted	93	2	1	450

**Table 7.7a Components of Total Correction  
Retail Trade - Annual Payroll  
Continued**

Component (included in reported figure in error or excluded from reported figure in error)		Number of Eligible Cases	Number of Cases Requiring Correction	Number of Cases Providing Book or Reliable Correction	Total Correction For Component (dollars of payroll)
16. Garnishments excluded*	weighted	131,651	0	0	0
	unweighted	135	0	0	0
17. Employees' portion of FICA payments excluded	weighted	650,020	3,343	1,859	\$5,116,000
	unweighted	1,178	9	5	13,768
18. Withholding taxes excluded	weighted	649,275	2,972	1,488	5,800,000
	unweighted	1,176	8	4	15,593
19. Tips reported to employer excluded	weighted	82,285	12,088	2,604	8,980,000
	unweighted	155	16	7	24,139
20. Bonuses excluded	weighted	371,491	18,372	13,313	60,819,000
	unweighted	595	25	17	74,290
21. Commissions excluded	weighted	186,700	1,489	372	21,355,000
	unweighted	289	4	1	57,406
22. Compensation in kind excluded*	weighted	63,798	17,285	1,856	4,909,000
	unweighted	100	30	5	13,236
23. Dismissal or severance pay excluded	weighted	209,815	371	0	0
	unweighted	245	1	0	0
24. Vacation pay excluded	weighted	535,965	5,539	1,970	1,603,000
	unweighted	921	5	2	1,010
25. Holiday pay excluded	weighted	499,098	3,569	1,599	800,000
	unweighted	837	3	1	500
26. Sick leave pay excluded	weighted	408,333	3,569	0	0
	unweighted	647	3	0	0
27. Payments from Expense Accounts included	weighted	387,917	6,283	743	-409,000
	unweighted	656	7	2	-1,100
28. Employers' costs for fringe benefits included	weighted	623,102	25,134	19,222	-129,912,000
	unweighted	1,131	29	23	-1,558,124
29. Retroactive payments paid in 1977 for work performed in 1976, included	weighted	592,858	3,200	1	-755,000
	unweighted	1,115	4	1	-754,837
30. Retroactive payments paid in 1978 for work performed in 1977, excluded	weighted	593,229	3,571	1,972	8,878,000
	unweighted	1,114	3	2	5,609
<b>Total Correction for Components 2 - 30</b>				<b>weighted unweighted</b>	<b>-\$386,916,000 -5,248,237</b>

\* Examples:

- 16. Court awarded child support withheld from pay check.
- 22. Holiday turkeys, meals for restaurants workers.
- 29, 30 Court awarded back pay.

\*\* correction is for payroll amounts included in or excluded from reported figure, regardless of whether corresponding employees were included in or excluded from reported employment figure, see examples table 7.5a.

Table 7.8a Components of Total Correction  
Retail Trade - Sales

(Total number of cases = 657,415 weighted and 1,188 unweighted)

Component (included in reported figure in error or excluded from reported figure in error)		Number of Eligible Cases	Number of Cases Requiring Correction	Number of Cases Providing Book or Reliable Correction	Total Correction For Component (dollars of sales)
1. Correction for item non- response on census form	weighted	8,775	8,775	8,775	\$3,644,512,000
	unweighted	17	17	17	8,045,918
2. Correction for estimation on census form	weighted	64,869	64,869	50,577	2,409,466,000
	unweighted	127	127	105	-32,487,475
3. Sales tax included	weighted	605,749	89,401	64,198	-1,289,238,000
	unweighted	1,081	191	143	-2,509,158
4. Labor charges excluded	weighted	195,222	9,744	3,832	33,204,000
	unweighted	412	14	8	91,253
5. Receipts for parts installed in repair work excluded	weighted	167,182	3,942	3,198	3,431,000
	unweighted	361	5	2	2,146
6. Delivery charges excluded	weighted	107,273	16,138	3,944	24,735,000
	unweighted	217	19	6	21,379,946
7. Layaway purchases excluded	weighted	132,976	3,940	371	7,791,000
	unweighted	220	4	1	21,000
8. Rental or leasing of vehicles, equipment, etc. to customers, excluded	weighted	60,796	3,941	1,971	4,791,000
	unweighted	117	4	2	9,905
9. Excise taxes excluded	weighted	173,402	14,651	4,685	368,483,000
	unweighted	309	13	6	271,396
10. Income from sale of land or buildings included	weighted	134,771	372	372	-14,136,000
	unweighted	211	1	1	-38,000
11. Income from sale of investments or assets included	weighted	141,582	1,116	1,116	-91,148,000
	unweighted	227	3	3	-245,022
12. Interest or Dividends included	weighted	181,396	11,519	8,918	-32,445,000
	unweighted	312	31	24	-87,351
13. Income from rental of real estate included	weighted	150,714	6,687	5,572	-44,069,000
	unweighted	243	18	15	-118,640
14. Carrying or credit charges included	weighted	193,306	43,604	13,342	-190,375,000
	unweighted	321	84	27	-5,144,880
15. Commissions from vending machines operated by a different company included	weighted	206,695	63,023	31,154	-26,058,000
	unweighted	323	122	66	-65,301
16. Rent from operators of leased departments or concessions located in the sample establish- ment, included	weighted	54,692	1,115	743	-4,868,000
	unweighted	97	3	2	-13,090
17. Discounts, allowances, refunds, etc. not deducted from reported figure	weighted	461,180	29,485	10,260	-37,128,000
	unweighted	800	44	22	-5,028,637
18. Value of trade-ins excluded	weighted	158,981	25,951	3,458	48,138,000
	unweighted	293	51	6	126,131
				<b>weighted</b>	<b>\$1,170,574,000</b>
<b>Total Correction for Components 2 - 18</b>				<b>unweighted</b>	<b>-23,835,777</b>

Table 7.5b Components of Total Correction  
Wholesale Trade - Employment

(Total number of cases = 267,814 weighted and 595 unweighted)

Component (included in reported figure in error or excluded from reported figure in error)		Number of Eligible Cases	Number of Cases Requiring Correction	Number of Cases Providing Book or Reliable Correction	Total Correction For Component (number of employee Correction)
1. Correction for item non- response on census form	weighted	4,694	4,694	4,694	28,072
	unweighted	11	11	11	68
2. Correction for estimation on census form	weighted	11,301	11,301	9,068	-15,254
	unweighted	24	24	19	-23
3. Persons on paid leave (sick holiday, vacation) excluded	weighted	224,260	592	0	0
	unweighted	493	1	0	0
4. Persons working at establishment but excluded*	weighted	247,197	5,241	3,829	5,652
	unweighted	545	11	8	12
5. Persons working at another establishment of same company but included for sample establishment	weighted	80,020	3,964	3,370	-18,762
	unweighted	143	9	6	-32
6. Temporary or part-time workers not included at all	weighted	133,229	6,426	3,827	8,110
	unweighted	298	13	8	18
7. Correction for temporary or part-time workers included by full-time equivalent count	weighted	411	411	411	411
	unweighted	1	1	1	1
8. Persons employed by establishment but supplied to different company and excluded*	weighted	3,189	593	0	0
	unweighted	7	2	0	0
9. Persons employed by different company, supplied to sample establishment and included*	weighted	29,477	821	0	0
	unweighted	61	2	0	0
10. Corporate officers or executives excluded	weighted	173,725	8,717	8,717	14,957
	unweighted	393	19	19	32
11. Partners or proprietors included	weighted	36,266	1,413	1,413	-1,413
	unweighted	87	3	3	-3
12. Persons still paid while temporarily away from job, excluded*	weighted	66,288	0	0	0
	unweighted	138	0	0	0
<b>Total Correction for Components 2 - 12</b>				<b>weighted unweighted</b>	<b>-6,299 5</b>

\* Examples:  
4 Management trainees counted at headquarters  
8 or 9 Janitorial service workers, temporary  
secretarial service workers, maintenance  
or repair workers  
12 Jury duty or military reserve training

Table 7.6b Components of Total Correction  
Wholesale Trade - First Quarter Payroll

(Total number of cases = 266,949 weighted and 1,592 unweighted)

Component (included in reported figure in error or excluded from reported figure in error)		Number of Eligible Cases	Number of Cases Requiring Correction	Number of Cases Providing Book or Reliable Correction	Total Correction For Component (Thous. of dollars of payroll)
1. Correction for item non- response on census form	weighted	11,229	11,229	11,229	\$246,944
	unweighted	27	27	27	2,653
2. Correction for estimation on census form	weighted	26,360	26,360	23,715	-155,310
	unweighted	58	58	52	-308
3. Payroll for persons working at establishment but excluded**	weighted	248,945	3,054	1,823	4,925
	unweighted	547	7	4	10
4. Payroll for persons working at another establishment of same company but included**	weighted	79,431	5,741	4,555	-81,205
	unweighted	145	13	9	-165
5. Payroll for temporary or part-time workers, excluded**	weighted	129,175	1,823	1,002	488
	unweighted	290	4	2	1
6. Payroll for persons em- ployed by establishment but supplied to different company, excluded**	weighted	4,419	1,412	0	0
	unweighted	10	3	0	0
7. Payroll for persons em- ployed by different company, supplied to sample establishment, included**	weighted	29,887	410	0	0
	unweighted	62	1	0	0
8. Payroll for corporate officers or executives, excluded**	weighted	170,035	4,010	3,599	25,717
	unweighted,	384	8	7	54
9. Payments to partners or proprietors, included**	weighted	36,266	821	821	-1,806
	unweighted	87	2	2	-4
10. Payroll for persons still paid while temporarily away from job, excluded**	weighted	69,934	0	0	0
	unweighted	147	0	0	0
11. Retirement contributions excluded	weighted	35,994	3,645	2,233	7,871
	unweighted	76	8	5	18
12. Employees' portion of group insurance premiums excluded	weighted	106,219	9,294	4,921	3,060
	unweighted	221	20	12	6
13. Union dues excluded	weighted	19,267	2,596	410	5
	unweighted	36	5	1	#0
14. Savings bonds, savings allotments, excluded	weighted	47,280	1,184	0	0
	unweighted	90	2	0	0
15. Charitable contributions excluded	weighted	39,353	592	0	0
	unweighted	74	1	0	0



Table 7.6b Components of Total Correction  
Wholesale Trade - First Quarter Payroll  
Continued

Component (included in reported figure in error or excluded from reported figure in error)		Number of Eligible Cases	Number of Cases Requiring Correction	Number of Cases Providing Book or Reliable Correction	Total Correction For Component (Thous. of dollars of payroll)
16. Garnishments excluded*	weighted	40,680	592	0	0
	unweighted	81	1	0	0
17. Employees' portion of FICA payments excluded	weighted	261,208	2,006	822	\$344
	unweighted	579	4	2	1
18. Withholding taxes excluded	weighted	260,797	1,414	1,414	4,469
	weighted	578	3	3	8
19. Other items not included	weighted	592	0	0	0
	unweighted	1	0	0	0
20. Bonuses excluded	weighted	174,351	2,005	411	443
	unweighted	382	5	2	410
21. Commissions excluded	weighted	124,866	2,050	820	1,436
	unweighted	270	5	2	4
22. Compensation in kind excluded*	weighted	12,619	2,004	1,002	3,798
	unweighted	25	4	2	7
23. Dismissed or severance pay excluded	weighted	85,591	592	0	0
	unweighted	177	1	0	0
24. Vacation pay excluded	weighted	229,446	0	0	0
	unweighted	503	0	0	0
25. Holiday pay excluded	weighted	228,674	0	0	0
	unweighted	502	0	0	0
26. Sick leave pay excluded	weighted	205,264	592	0	0
	unweighted	449	1	0	0
27. Payments from Expense Accounts included	weighted	243,707	5,057	3,235	-1,293
	unweighted	536	11	7	-2
28. Employers' costs for fringe benefits included	weighted	246,972	5,604	3,008	-2,662
	unweighted	544	12	7	-92
29. Retroactive payments included or excluded in error*	weighted	0	0	0	0
	unweighted	0	0	0	0
<b>Total Correction for Components 2 - 29</b>				<b>weighted unweighted</b>	<b>-\$189,720 -52</b>

\* Examples:

- 16. Court awarded child support withheld from pay check.
- 22. Holiday turkeys, subsidized meals for employees
- 29. Court awarded back pay, component is usually amount paid in 1977 for work performed in 1976 (subtracted) or paid in 1978 for work performed in 1977 (added)

\*\* Correction is for payroll amounts included in or excluded from reported figure, regardless of whether corresponding employees were included in or excluded from reported employment figure, see examples table 7.5a.

# Actual number is less than \$500.

Table 7.7b Components of Total Correction  
Wholesale Trade - Annual Payroll

(Total number of cases = 271,003 weighted and 601 unweighted)

Component (included in reported figure in error or excluded from reported figure in error)		Number of Eligible Cases	Number of Cases Requiring Correction	Number of Cases Providing Book or Reliable Correction	Total Correction For Component (Thous. of dollars of payroll)
1. Correction for item non- response on census form	weighted	4,055	4,055	4,055	\$341,798
	unweighted	10	10	10	12,448
2. Correction for estimation on census form	weighted	24,715	24,715	23,303	-362,826
	unweighted	54	54	51	-564
3. Payroll for persons working at establishment but excluded**	weighted	252,999	3,054	2,234	30,827
	unweighted	556	7	5	64
4. Payroll for persons working at another establishment of same company but included**	weighted	80,023	5,741	5,148	-398,528
	unweighted	146	13	11	-881
5. Payroll for temporary or part-time workers, excluded**	weighted	130,997	2,645	1,824	7,096
	unweighted	294	6	4	17
6. Payroll for persons em- ployed by establishment but supplied to different company, excluded**	weighted	4,419	1,412	0	0
	unweighted	10	3	0	0
7. Payroll for persons em- ployed by different company, supplied to sample establishment included**	weighted	29,887	821	0	0
	unweighted	62	2	0	0
8. Payroll for corporate officers or executives, excluded**	weighted	172,495	4,830	4,009	103,460
	unweighted	390	10	8	211
9. Payments to partners or proprietors, included**	weighted	37,678	821	821	-8868
	unweighted	90	2	2	-22
10. Payroll for persons still paid while temporarily away from job, excluded**	weighted	70,526	0	0	0
	unweighted	148	0	0	0
11. Retirement contributions excluded	weighted	36,586	5,058	4,056	52,836
	unweighted	77	11	9	112
12. Employees' portion of group insurance premiums excluded	weighted	107,631	9,294	5,513	12,066
	unweighted	224	20	13	28
13. Union dues excluded	weighted	19,267	2,596	410	20
	unweighted	36	5	1	#0
14. Savings bonds, savings allotments, excluded	weighted	47,872	1,184	0	0
	unweighted	91	2	0	0
15. Charitable contributions excluded	weighted	40,355	1002	410	41
	unweighted	76	2	1	#0

Table 7.7b Components of Total Correction  
Wholesale Trade - Annual Payroll  
Continued

Component (included in reported figure in error or excluded from reported figure in error)		Number of Eligible Cases	Number of Cases Requiring Correction	Number of Cases Providing Book or Reliable Correction	Total Correctio For Component (Thous. of dolla of payroll)
16. Garnishments excluded*	weighted	41,090	592	0	0
	unweighted	82	1	0	0
17. Employees' portion of FICA payments excluded	weighted	265,262	2,598	1,414	\$5,571
	unweighted	588	5	3	11
18. Withholding taxes excluded	weighted	264,851	1,414	1,414	21,434
	unweighted	587	3	3	41
19. Other items not included	weighted	592	0	0	0
	unweighted	1	0	0	0
20. Bonuses excluded	weighted	176,993	3,417	1,823	12,065
	unweighted	388	8	5	1,250
21. Commissions excluded	weighted	126,870	2,460	1,640	21,000
	unweighted	274	6	4	52
22. Compensation in kind excluded*	weighted	12,619	2,004	1,002	15,233
	unweighted	25	4	2	27
23. Dismissal or severance pay excluded	weighted	86,183	592	0	0
	unweighted	178	1	0	0
24. Vacation pay excluded	weighted	231,678	0	0	0
	unweighted	508	0	0	0
25. Holiday pay excluded	weighted	231,726	0	0	0
	unweighted	509	0	0	0
26. Sick leave pay excluded	weighted	207,496	592	0	0
	unweighted	454	1	0	0
27. Payments from Expense Accounts included	weighted	247,761	5,467	4,055	-14,164
	unweighted	545	12	9	-33
28. Employers' costs for fringe benefits included	weighted	250,616	5,604	3,600	-41,369
	unweighted	552	12	8	-277
29. Retroactive payments included or excluded in error*	weighted	0	0	0	0
	unweighted	0	0	0	0
Total Correction for Components 2 - 29				weighted unweighted	\$-544,106 36

\* Examples:  
16. Court awarded child support withheld from pay check.  
22. Holiday turkeys, subsidized meals for employees  
29. Court awarded back pay, component is usually amount  
paid in 1977 for work performed in 1976 (subtracted)  
or paid in 1978 for work performed in 1977 (added)

\*\* Correction is for payroll amounts included in or excluded from  
reported figure, regardless of whether corresponding  
employees were included in or excluded from reported  
employment figure, see examples table 7.5a.

# Actual number is less than \$500

Table 7.8b Components of Total Correction  
Wholesale Trade - Sales

(Total number of cases = 272,596 weighted and 605 unweighted)

Component (included in reported figure in error or excluded from reported figure in error)		Number of Eligible Cases	Number of Cases Requiring Correction	Number of Cases Providing Book or Reliable Correction	Total Correction For Component (dollars of sales)	
1. Correction for item non- response on census form	weighted	4,646	4,646	4,646	\$3,064,563,000	
	unweighted	10	10	10	5,916,678	
2. Correction for estimation on census form	weighted	26,128	26,128	17,289	619,113,000	
	unweighted	59	59	41	540,764,957	
3. Sales tax included	weighted	234,124	29,070	18,180	-2,424,923,000	
	unweighted	518	61	39	-4,190,934	
4. Portion of gross selling value of commission sales, excluded	weighted	56,455	5,468	3,236	3,074,955,000	
	unweighted	132	12	7	6,025,000	
5. Sales of goods shipped from manufacturer directly to customer by order of sample establishment, excluded	weighted	134,518	411	411	81,378,000	
	unweighted	295	1	1	198,000	
6. Freight, installation, maintenance, repair, alteration, storage, other services receipts excluded	weighted	117,728	13,165	6,014	45,961,000	
	unweighted	262	25	12	93,247	
7. Deliveries to same company gas stations excluded (petroleum bulk plants only)	weighted	3,962	592	0	0	
	unweighted	7	1	0	0	
8. Excise taxes excluded	weighted	41,869	5,329	2,960	970,880,000	
	unweighted	88	10	5	1,640,454	
9. Income from sale of land or buildings included	weighted	64,441	412	0	0	
	unweighted	144	1	0	0	
10. Income from sale of invest- ments or assets included	weighted	70,684	3,464	2,050	-9,020,000	
	unweighted	157	8	5	-23,758	
11. Interest or dividends included	weighted	88,953	7,335	3,691	-33,042,000	
	unweighted	200	18	10	-1,553,210	
12. Income from rental of real estate included	weighted	60,741	2,825	1,823	-7,164,000	
	unweighted	134	6	4	-17,963	
13. Carrying or credit charges included	weighted	97,882	18,836	5,878	-30,706,000	
	unweighted	213	42	13	-78,438	
14. Discounts, allowances, returns or refunds not deducted from reported figure	weighted	213,180	22,692	12,257	-323,654,000	
	unweighted	464	47	25	-608,832	
				<b>Total Correction for Components 2 - 14</b>	<b>weighted unweighted</b>	<b>\$1,963,778,000 542,248,523</b>

Table 7.5c Components of Total Correction  
Selected Services - Employment

(Total number of cases = 272,265 weighted and 552 unweighted)

Component (included in reported figure in error or excluded from reported figure in error)		Number of Eligible Cases	Number of Cases Requiring Correction	Number of Cases Providing Book or Reliable Correction	Total Correction For Component (Number of employees)
1. Correction for item non- response on census form	weighted	9,923	9,923	9,923	83,600
	unweighted	21	21	21	727
2. Correction for estimation on census form	weighted	12,128	12,128	8,043	-12,704
	unweighted	25	25	16	-25
3. Persons on paid leave (sick holiday, vacation) excluded	weighted	211,413	988	0	0
	unweighted	430	2	0	0
4. Persons working at establish- ment but excluded*	weighted	253,236	6,577	4,549	8,168
	unweighted	514	13	9	16
5. Persons working at another establishment of same company but included for sample establishment	weighted	55,939	988	494	-643
	unweighted	112	3	2	-151
6. Temporary or part-time workers not included at all	weighted	173,313	9,183	4,550	8,032
	unweighted	353	18	9	16
7. Correction for temporary or part-time workers included by full-time equivalent count	weighted	3,509	495	495	7,787
	unweighted	7	1	1	15
8. Persons employed by establishment but supplied to different company and excluded*	weighted	13,783	1,014	0	0
	unweighted	29	2	0	0
9. Persons employed by dif- ferent company, supplied to sample establishment and included*	weighted	34,271	1,508	0	0
	unweighted	69	3	0	0
10. Corporate officers or executives excluded	weighted	117,163	7,484	6,991	12,473
	unweighted	240	15	14	25
11. Partners or proprietors included	weighted	99,133	3,482	3,482	-6,940
	unweighted	201	7	7	-14
12. Persons still paid while temporarily away from job, excluded*	weighted	38,707	0	0	0
	unweighted	82	0	0	0
				Total Correction for Components 2 - 12	16,173
					weighted unweighted
					-118

\* Examples:

- 4 Management trainees counted at headquarters
- 8 or 9 Janitorial service workers, temporary  
secretarial service workers, maintenance or  
repair workers
- 12 Jury duty or military reserve training

Table 7.6c Components of Total Correction  
Selected Service - First Quarter Payroll

(Total number of cases = 266,753 weighted and 542 unweighted)

Component (included in reported figure in error or excluded from reported figure in error)		Number of Eligible Cases	Number of Cases Requiring Correction	Number of Cases Providing Book or Reliable Correction	Total Correction For Component (dollars of payroll)
1. Correction for item non- response on census form	weighted	12,387	12,387	12,387	\$419,190,000
	unweighted	25	25	25	848,842
2. Correction for estimation on census form	weighted	24,262	24,262	15,572	20,263,000
	unweighted	49	49	31	59,150
3. Payroll for persons working at establish- ment but excluded**	weighted	251,674	3,536	986	7,459,000
	unweighted	512	7	2	15,130
4. Payroll for persons working at another establishment of same company but included**	weighted	59,559	495	0	0
	unweighted	120	2	0	0
5. Payroll for temporary or part-time workers, excluded**	weighted	169,775	3,563	1,014	329,000
	unweighted	347	7	2	650
6. Payroll for persons em- ployed by establishment but supplied to different company, excluded**	weighted	13,290	521	0	0
	unweighted	28	1	0	0
7. Payroll for persons em- ployed by different company, supplied to sample establish- ment, included**	weighted	29,720	0	0	0
	unweighted	60	0	0	0
8. Payroll for corporate officers or executives, excluded**	weighted	115,656	4,553	3,045	25,072,000
	unweighted	238	9	6	49,567
9. Payments to partners or proprietors, included**	weighted	95,651	2,494	1,507	-7,823,000
	unweighted	194	5	3	-15,300
10. Payroll for persons still paid while temporarily away from job, excluded**	weighted	41,723	0	0	0
	unweighted	88	0	0	0
11. Retirement contributions excluded	weighted	24,212	5,947	2,960	6,242,000
	unweighted	53	12	6	12,650
12. Employees' portion of group insurance premiums excluded	weighted	86,654	9,427	4,933	5,146,000
	unweighted	177	19	10	10,430
13. Union dues excluded	weighted	16,833	1,507	493	192,000
	unweighted	36	3	1	389
14. Savings bonds, savings allotments, excluded	weighted	26,303	0	0	0
	unweighted	57	0	0	0
15. Charitable contributions excluded	weighted	22,104	521	521	6,295,000
	unweighted	49	1	1	12,083

**Table 7.6c Components of Total Correction  
Selected Service - First Quarter Payroll  
Continued**

Component (included in reported figure in error or excluded from reported figure in error)		Number of Eligible Cases	Number of Cases Requiring Correction	Number of Cases Providing Book or Reliable Correction	Total Correction For Component (dollars of payroll)
16. Garnishments excluded*	weighted	29,247	0	0	0
	unweighted	65	0	0	0
17. Employees' portion of FICA payments excluded	weighted	260,147	2,001	1,507	\$17,398,000
	unweighted	529	4	3	33,436
18. Withholding taxes excluded	weighted	260,145	1,014	1,014	41,100,000
	unweighted	529	2	2	79,042
19. Tips reported to employer excluded	weighted	14,666	493	0	0
	unweighted	30	1	0	0
20. Bonuses excluded	weighted	131,713	3,564	493	4,930,000
	unweighted	269	7	1	10,000
21. Commissions excluded	weighted	62,019	1,480	987	2,564,000
	unweighted	126	3	2	5,190
22. Compensation in kind excluded*	weighted	13,104	4,059	1,535	2,080,000
	unweighted	27	8	3	3,995
23. Dismissed or severance pay excluded	weighted	68,057	0	0	0
	unweighted	142	0	0	0
24. Vacation pay excluded	weighted	210,076	0	0	0
	unweighted	428	0	0	0
25. Holiday pay excluded	weighted	202,561	0	0	0
	unweighted	413	0	0	0
26. Sick leave pay excluded	weighted	176,661	0	0	0
	unweighted	361	0	0	0
27. Payments from Expense Accounts included	weighted	167,908	2,480	1,479	-9,000
	unweighted	343	5	3	-21
28. Employers' costs for fringe benefits included	weighted	252,727	4,510	2,029	-1,405,000
	unweighted	514	9	4	-2,731
29. Retroactive payments paid in 1977 for work performed in 1976, included	weighted	255,041	1,508	987	-2,035,000
	unweighted	517	3	2	-4,127
30. Retroactive payments paid in 1978 for work performed in 1977, excluded	weighted	254,054	521	0	0
	unweighted	515	1	0	0
				<b>Total Correction for Components 2 - 30</b>	<b>\$137,798,000</b>
				weighted unweighted	<b>269,533</b>

\* Examples:

- 16. Court awarded child support withheld from pay check.
- 22. Holiday turkeys, meals for restaurants workers.
- 29, 30 Court awarded back pay.

\*\* correction is for payroll amounts included in or excluded from reported figure, regardless of whether corresponding employees were included in or excluded from reported employment figure, see examples table 7.5a.

Table 7.7c Components of Total Correction  
Selected Service - Annual Payroll

(Total number of cases = 276,227 weighted and 561 unweighted)

Component (included in reported figure in error or excluded from reported figure in error)		Number of Eligible Cases	Number of Cases Requiring Correction	Number of Cases Providing Book or Reliable Correction	Total Correction For Component (dollars of payroll)
1. Correction for item non- response on census form	weighted	6,935	6,935	6,935	\$1,576,191,000
	unweighted	14	14	14	3,191,246
2. Correction for estimation on census form	weighted	27,666	27,666	22,046	3,421,000
	unweighted	55	55	44	4,614
3. Payroll for persons working at establishment but excluded**	weighted	261,148	5,043	3,014	38,527,000
	unweighted	531	10	6	77,210
4. Payroll for persons working at another establishment of same company but included**	weighted	61,122	495	0	0
	unweighted	123	2	0	0
5. Payroll for temporary or part-time workers, excluded**	weighted	175,780	4,057	2,029	2,318,000
	unweighted	359	8	4	4,475
6. Payroll for persons em- ployed by establishment but supplied to dif- ferent company, excluded**	weighted	13,290	521	0	0
	unweighted	28	1	0	0
7. Payroll for persons em- ployed by different company, supplied to sample establishment, included**	weighted	30,734	0	0	0
	unweighted	62	0	0	0
8. Payroll for corporate officers or executives, excluded**	weighted	119,152	5,046	3,539	100,182,000
	unweighted	245	10	7	198,070
9. Payments to partners or proprietors, included**	weighted	101,108	2,494	1,507	-30,799,000
	unweighted	205	5	3	-60,200
10. Payroll for persons still paid while temporarily away from job, excluded**	weighted	41,723	0	0	0
	unweighted	88	0	0	0
11. Retirement contributions excluded	weighted	24,706	6,934	5,426	70,490,000
	unweighted	54	14	11	142,932
12. Employees' portion of group insurance premiums excluded	weighted	88,162	9,427	5,919	22,512,000
	unweighted	180	19	12	45,648
13. Union dues excluded	weighted	16,833	1,507	493	740,000
	unweighted	36	3	1	1,500
14. Savings bonds, savings allotments, excluded	weighted	26,824	0	0	0
	unweighted	58	0	0	0
15. Charitable contributions excluded	weighted	22,625	521	521	1,705,000
	unweighted	50	1	1	3,273



Table 7.7c Components of Total Correction  
Selected Service - Annual Payroll  
Continued

Component (included in reported figure in error or excluded from reported figure in error)		Number of Eligible Cases	Number of Cases Requiring Correction	Number of Cases Providing Book or Reliable Correction	Total Correction For Component (dollars of payroll)
16. Garnishments excluded*	weighted	29,247	0	0	0
	unweighted	65	0	0	0
17. Employees' portion of FICA payments excluded	weighted	269,621	2,001	1,507	\$33,940,000
	unweighted	548	4	3	65,269
18. Withholding taxes excluded	weighted	269,125	1,014	1,014	156,210,000
	unweighted	547	2	2	300,418
19. Tips reported to employer excluded	weighted	15,159	493	0	0
	unweighted	31	1	0	0
20. Bonuses excluded	weighted	133,179	7,021	4,004	6,477,000
	unweighted	272	14	8	13,005
21. Commissions excluded	weighted	62,512	1,480	1,480	7,143,000
	unweighted	127	3	3	14,465
22. Compensation in kind excluded*	weighted	13,104	4,059	2,056	8,582,000
	unweighted	27	8	4	16,480
23. Dismissed or severance pay excluded	weighted	69,071	0	0	0
	unweighted	144	0	0	0
24. Vacation pay excluded	weighted	215,024	493	493	247,000
	unweighted	438	1	1	500
25. Holiday pay excluded	weighted	207,509	0	0	0
	unweighted	423	0	0	0
26. Sick leave pay excluded	weighted	182,130	0	0	0
	unweighted	372	0	0	0
27. Payments from Expense Accounts included	weighted	173,349	3,467	2,466	-694,000
	unweighted	354	7	5	-1,405
28. Employers' costs for fringe benefits included	weighted	262,201	4,510	2,056	-14,394,000
	unweighted	533	9	4	-27,751
29. Retroactive payments paid in 1977 for work performed in 1976, included	weighted	264,515	1,508	1,508	-17,578,000
	unweighted	536	3	3	-35,201
30. Retroactive payments paid in 1978 for work performed in 1977, excluded	weighted	263,528	521	521	22,143,000
	unweighted	534	1	1	42,500
			<b>Total Correction for Components 2 - 30</b>	<b>weighted unweighted</b>	<b>\$411,172,000 805,802</b>

\* Examples:

- 16. Court awarded child support withheld from pay check
- 22. Holiday turkeys, meals for restaurants workers
- 29, 30 Court awarded back pay

\*\* correction is for payroll amounts included in or excluded from reported figure, regardless of whether corresponding employees were included in or excluded from reported employment figure, see examples table 7.5a

Table 7.8c Components of Total Correction  
Selected Services - Receipts

(Total number of cases = 274,293 weighted and 556 unweighted)

Component (included in reported figure in error or excluded from reported figure in error)		Number of Eligible Cases	Number of Cases Requiring Correction	Number of Cases Providing Book or Reliable Correction	Total Correction For Component (Thous. of dollars of receipts)
1. Correction for item non- response on census form	weighted	8,539	8,359	8,359	\$2,362,847
	unweighted	17	17	17	4,666
2. Correction for estimation on census form	weighted	28,585	28,585	21,485	391,194
	unweighted	58	58	44	825
3. Sales tax included	weighted	209,391	32,390	22,934	121,599
	unweighted	425	65	46	-241
4. Receipts for the temporary use of establishment's facilities by others excluded	weighted	31,690	2,028	986	1,233
	unweighted	63	4	2	3
5. Sales of merchandise excluded	weighted	86,121	2,577	1,535	243,146
	unweighted	176	5	3	467
6. Receipts for work performed by subcontractors excluded	weighted	53,367	1,507	0	0
	unweighted	111	3	0	0
7. Income from sale of land or buildings included	weighted	49,287	0	0	0
	unweighted	99	0	0	0
8. Income from sale of invest- ments or assets included	weighted	55,725	2,466	2,466	-55,751
	unweighted	113	5	5	-113
9. Interest or dividends included	weighted	85,122	20,396	15,406	-24,848
	unweighted	174	41	31	-49
10. Income from rental of real estate included	weighted	57,655	7,955	4,993	-72,221
	unweighted	118	16	10	-141
11. Carrying or credit charges included	weighted	51,163	5,511	2,988	-28,859
	unweighted	105	11	6	-55
12. Commissions from vending machines operated by a different company, included	weighted	57,699	18,020	9,052	-26,667
	unweighted	118	36	18	-54
13. Rent from operators of leased department or concessions, located in sample establishment, included	weighted	29,656	4,030	2,002	-12,305
	unweighted	60	9	5	-4,799
14. Receipts of leased depart- ments or concessions located in sample establishment, included	weighted	28,206	1,536	494	-3,211
	unweighted	57	3	1	-7
15. Discounts, allowances, refunds, returns not deducted from reported figure	weighted	122,973	10,526	5,538	-56,110
	unweighted	250	21	11	-113
<b>Total Correction for Components 2 - 15</b>				<b>weighted unweighted</b>	<b>\$234,002 -4,277</b>

Table 7.5d Components of Total Correction  
Manufactures - Employment

(Total number of cases = 127,609 weighted and 582 unweighted)

Component (included in reported figure in error or excluded from reported figure in error)		Number of Eligible Cases	Number of Cases Requiring Correction	Number of Cases Providing Book or Reliable Correction	Total Correction For Component (number of employe
1. Correction for item non- response on census form	weighted	3,751	3,751	3,751	46,018
	unweighted	15	15	15	206
2. Correction for estimation on census form	weighted	4,501	4,501	2,676	-42,610
	unweighted	28	28	13	-21,547
3. Persons on paid leave (sick, holiday, vacation) excluded	weighted	116,792	2,278	621	8,280
	unweighted	539	12	3	40
4. Persons working at establishment but excluded*	weighted	126,728	3,957	3,279	16,238
	unweighted	578	23	17	650
5. Persons working at another establishment of same company but included	weighted	46,548	3,115	2,902	-99,673
	unweighted	267	25	18	-1,617
6. Persons employed by establishment but supplied to different company and excluded*	weighted	625	414	0	0
	unweighted	7	2	0	0
7. Persons employed by different company supplied to sample establishment and included*	weighted	8,318	207	0	0
	unweighted	58	1	0	0
8. Temporary or part time workers not included at all	weighted	73,053	4,988	2,447	10,718
	unweighted	342	25	10	45
9. Correction for temporary or part-time workers included by full-time equivalent count	weighted	1,405	1,405	1,405	3,421
	unweighted	6	6	6	16
10. Persons still paid while temporarily away from job, excluded*	weighted	40,640	209	1	325
	unweighted	225	3	1	325
11. Agricultural workers included	weighted	6,081	1,349	882	-3,366
	unweighted	29	6	4	-16
12. Fishermen included	weighted	4,992	261	261	-261
	unweighted	23	1	1	-1
13. Members of the armed forces stationed at establishment, included	weighted	6,915	1,090	468	-675
	unweighted	38	6	2	-3
14. Retired persons on pension from company included	weighted	14,660	3,908	3,437	-6,704
	unweighted	72	20	15	-30
15. Partners or proprietors included	weighted	6,603	1,563	1,563	-2,605
	unweighted	26	6	6	-10
			<b>Total Correction for Components 2 - 15</b>	<b>weighted unweighted</b>	<b>-116,912 -22,148</b>

\* Examples:  
4 management trainees counted at headquarters  
6 or 7 janitorial service workers, temporary  
secretarial service workers, maintenance  
or repair workers  
10 jury duty or military reserve training

(There is no table 7.6d)

(Total number of cases = 126,053 weighted and 575 unweighted)

Component (included in reported figure in error or excluded from reported figure in error)		Number of Eligible Cases	Number of Cases Requiring Correction	Number of Cases Providing Book or Reliable Correction	Total Correction For Component (dollars of payroll)
1. Correction for item non- response on census form	weighted	1,563	1,563	1,563	\$101,364,760
	unweighted	6	6	6	389,501
2. Correction for estimation on census form	weighted	8,889	8,889	6,189	856,564,489
	unweighted	40	40	26	3,548,384
3. Payroll for persons working at establishment but excluded**	weighted	124,236	3,432	1,927	45,220,231
	unweighted	567	19	10	1,674,151
4. Payroll for persons working at another establishment of same company but included**	weighted	45,100	2,701	2,486	-844,367,539
	unweighted	261	23	14	-20,135,377
5. Payroll for persons employed by establishment but supplied to an different company, excluded**	weighted	625	207	0	0
	unweighted	7	1	0	0
5. Payroll for persons employed by different company, supplied to sample establishment, included**	weighted	7,282	415	0	0
	unweighted	52	3	0	0
7. Payroll to temporary or part-time workers excluded**	weighted	70,534	1,297	207	2,070,000
	unweighted	330	7	1	10,000
8. Payroll for persons still paid while temporarily away from job, excluded**	weighted	37,941	416	208	20,880,457
	unweighted	212	4	2	249,351
9. Payroll for agricultural workers included**	weighted	28,434	621	414	-45,315,198
	unweighted	137	3	2	-218,914
10. Payroll for fishermen included**	weighted	28,434	0	0	0
	unweighted	137	0	0	0
11. Payroll for members of the armed forces stationed at establishment, included**	weighted	28,434	622	621	-7,806,798
	unweighted	137	4	3	-37,714
12. Payments to retired persons on pension from company included**	weighted	28,433	3,124	2,392	-72,031,634
	unweighted	136	16	10	-329,977
13. Payments to partners and proprietors included**	weighted	6,134	1,040	780	-9,573,200
	unweighted	24	4	3	-36,820
14. Retirement contributions excluded	weighted	26,864	4,570	2,338	58,357,526
	unweighted	144	21	10	236,373
15. Employees' portion of group insurance premiums excluded	weighted	63,942	4,570	2,806	34,705,567
	unweighted	312	21	12	156,159

**Table 7.7d Components of Total Correction  
Manufactures - Annual Payroll  
Continued**

Component (included in reported figure in error or excluded from reported figure in error)		Number of Eligible Cases	Number of Cases Requiring Correction	Number of Cases Providing Book or Reliable Correction	Total Correction For Component (dollars of payroll)
16. Union dues excluded	weighted	32,306	1,248	728	374,610
	unweighted	178	5	3	1,489
17. Savings bonds, savings allotments excluded	weighted	32,025	467	260	111,800
	unweighted	192	2	1	430
18. Employees' portion of FICA payments excluded	weighted	124,075	1,763	674	\$25,991,940
	unweighted	567	9	3	123,819
19. Withholding taxes excluded	weighted	124,282	1,556	260	5,602,480
	unweighted	568	8	1	21,548
20. Bonuses excluded	weighted	87,746	2,548	1,403	22,612,003
	unweighted	403	13	6	99,029
21. Commissions excluded	weighted	35,036	2,392	1,196	14,650,099
	unweighted	157	10	5	64,015
22. Compensation in kind excluded*	weighted	7,322	2,288	936	5,764,500
	unweighted	38	12	4	25,500
23. Dismissal or severance pay excluded	weighted	50,823	471	0	0
	unweighted	263	5	0	0
24. Vacation pay excluded	weighted	118,878	1,865	415	1,154,613,226
	unweighted	547	11	3	13,495,384
25. Holiday pay excluded	weighted	117,313	1,658	208	558,827,457
	unweighted	541	10	2	6,651,667
26. Sick leave pay excluded	weighted	90,193	1,712	415	200,504,375
	unweighted	429	10	3	2,340,409
27. Annuities or supplemental labor costs included	weighted	122,835	1,089	207	-522,882,000
	unweighted	560	5	1	-2,526,000
28. Retroactive payments included or excluded in error*	weighted	0	0	0	0
	unweighted	0	0	0	0
			<b>Total Correction for Components 2 - 28</b>	<b>weighted unweighted</b>	<b>\$1,504,874,391 \$5,412,906</b>

\* Examples:  
 22 holiday turkeys, subsidized meals for employees  
 28 court awarded back pay, component is usually  
 amount paid in 1977 for work performed in 1976,  
 or paid in 1978 for work performed in 1977

\*\* correction is for payroll amounts included in or  
 excluded from reported figure, regardless of whether  
 corresponding employees were included in or excluded  
 from reported figure, see examples table 7.5d

Table 7.8d Components of Total Correction  
Manufactures - Value of Products Shipped

(Total number of cases = 127,210 weighted and 580 unweighted)

Component (included in reported figure in error or excluded from reported figure in error)		Number of Eligible Cases	Number of Cases Requiring Correction	Number of Cases Providing Book or Reliable Correction	Total Correction For Component (Thous. of dollars of value of products shipped)
1. Correction for item non- response on census form	weighted	9,346	9,346	9,346	34,929,399
	unweighted	37	37	37	156,338
2. Correction for estimation on census form	weighted	10,362	10,362	7,507	29,867,104
	unweighted	48	48	32	143,530
3. Freight charges included	weighted	118,876	17,743	7,177	-825,841
	unweighted	542	89	30	-3,748
4. Value of discounts not deducted	weighted	78,724	10,816	7,537	-1,520,910
	unweighted	363	51	32	-7,057
5. Excise taxes included	weighted	22,646	261	261	-293
	unweighted	115	1	1	-1
6. Value of returns or allowances not deducted	weighted	82,608	4115	1,980	-76,114
	unweighted	386	20	8	-299
7. Shipment to company warehouses excluded	weighted	91,796	2,485	1,242	4,119,716
	unweighted	435	13	6	19,903
8. Shipments to other domestic plants of the company for further processing, excluded	weighted	83,445	3,108	622	596,725
	unweighted	397	18	4	12,097
9. Shipments to company sales branches excluded	weighted	79,029	1,036	414	2,177,226
	unweighted	361	6	2	10,518
10. Shipments directly to customers excluded	weighted	111,869	414	0	0
	unweighted	514	2	0	0
11. Value of goods produced by another firm using materials owned by sample establishment excluded	weighted	118,386	1,090	207	20,700
	unweighted	534	7	1	100
			<b>Total Correction for Components 2 - 11</b>	<b>weighted unweighted</b>	<b>\$34,358,313 175,043</b>

**APPENDIX A**  
**Ratios of Pairs of Totals of Reported,**  
**Reinterview, and Tabulation Data**  
**for Single Units and Multiunits**

**Table A.1a Ratios of Estimates of U.S. Totals**  
**Multiunits - Retail Trade**

Census Item	$\hat{R}_1 = \frac{X'_{rein}}{X'_{tab}}$ (s.e. of $\hat{R}$ )	$\hat{R}_2 = \frac{X'_{rein}}{X'_{rep}}$ (s.e. of $\hat{R}$ )	$\hat{R}_3 = \frac{X'_{tab}}{X'_{rep}}$ (s.e. of $\hat{R}$ )
March Employment	.9838 (0.0155)	.9847 (0.0158)	1.0078 (0.0164)
First Quarter	.9601 (0.0271)	.9864 (0.0098)	1.0315 (0.0305)
Annual Payroll	.9615 (0.0265)	.9867 (0.0154)	1.0296 (0.0305)
Sales	.9745* (0.0114)	1.0019 (0.0054)	1.0210** (0.0107)

**Table A.2a Ratios of Estimates of U.S. Totals**  
**Single Units - Retail Trade**

Census Item	$\hat{R}_1 = \frac{X'_{rein}}{X'_{tab}}$ (s.e. of $\hat{R}$ )	$\hat{R}_2 = \frac{X'_{rein}}{X'_{rep}}$ (s.e. of $\hat{R}$ )	$\hat{R}_3 = \frac{X'_{tab}}{X'_{rep}}$ (s.e. of $\hat{R}$ )
March Employment	.9959 (0.0066)	1.0082* (0.0035)	1.0068 (0.0050)
First Quarter Payroll	1.0011 (0.0129)	1.0031 (0.0045)	1.0140* (0.0048)
Annual Payroll	1.0062 (0.0069)	1.0041 (0.0028)	0.9975 (0.0061)
Sales	.9980 (0.0063)	1.0032 (0.0057)	1.0024 (0.0028)

\* significant at  $\alpha = 0.05$

\*\* significant at  $\alpha = 0.10$

Table A.1b Ratios of Estimates of U.S. Totals  
Multiunits - Wholesale Trade

Census Item	$\hat{R}_1 = \frac{X'_{rein}}{X'_{tab}}$ (s.e. of $\hat{R}$ )	$\hat{R}_2 = \frac{X'_{rein}}{X'_{rep}}$ (s.e. of $\hat{R}$ )	$\hat{R}_3 = \frac{X'_{tab}}{X'_{rep}}$ (s.e. of $\hat{R}$ )
March Employment	.9913 (0.0072)	.9841 (0.0148)	.9927 (0.0120)
First Quarter Payroll	.9814* (0.0081)	.9851 (0.0130)	1.0004 (0.0117)
Annual Payroll	.9929 (0.0065)	.9837 (0.0119)	.9906 (0.0114)
Sales	.9665** (0.0190)	1.0019 (0.0064)	1.0296 (0.0213)

Table A.2b Ratios of Estimates of U.S. Totals  
Single Units - Wholesale Trade

Census Item	$\hat{R}_1 = \frac{X'_{rein}}{X'_{tab}}$ (s.e. of $\hat{R}$ )	$\hat{R}_2 = \frac{X'_{rein}}{X'_{rep}}$ (s.e. of $\hat{R}$ )	$\hat{R}_3 = \frac{X'_{tab}}{X'_{rep}}$ (s.e. of $\hat{R}$ )
March Employment	.9800 (0.0139)	1.0154* (0.0058)	1.0326* (0.0137)
First Quarter Payroll	.9461* (0.0117)	.9837 (0.0116)	1.0332* (0.0145)
Annual Payroll	.9957 (0.0078)	1.0039 (0.0050)	1.0065 (0.0060)
Sales	.8792* (0.0432)	1.0042 (0.0045)	1.1142* (0.0488)

\* significant at  $\alpha = 0.05$

\*\* significant at  $\alpha = 0.10$



**Table A.1c Ratios of Estimates of U.S. Totals  
Multiunits - Selected Services**

Census Item	$\hat{R}_1 = \frac{\bar{X}_{rein}}{\bar{X}_{tab}}$ (s.e. of $\hat{R}$ )	$\hat{R}_2 = \frac{\bar{X}_{rein}}{\bar{X}_{rep}}$ (s.e. of $\hat{R}$ )	$\hat{R}_3 = \frac{\bar{X}_{tab}}{\bar{X}_{rep}}$ (s.e. of $\hat{R}$ )
March Employment	1.0073 (0.0478)	1.0062 (0.0474)	.9983 (0.0123)
First Quarter Payroll	1.0097 (0.0332)	1.0244 (0.0187)	1.0140 (0.0300)
Annual Payroll	.9988 (0.0239)	1.0161 (0.0128)	1.0167 (0.0211)
Receipts	1.0286 (0.0643)	1.0030 (0.0035)	.9796 (0.0614)

**Table A.2c Ratios of Estimates of U.S. Totals  
Single Units - Selected Services**

Census Item	$\hat{R}_1 = \frac{\bar{X}_{rein}}{\bar{X}_{tab}}$ (s.e. of $\hat{R}$ )	$\hat{R}_2 = \frac{\bar{X}_{rein}}{\bar{X}_{rep}}$ (s.e. of $\hat{R}$ )	$\hat{R}_3 = \frac{\bar{X}_{tab}}{\bar{X}_{rep}}$ (s.e. of $\hat{R}$ )
March Employment	.9800** (0.0115)	1.0039 (0.0065)	1.0228* (0.0104)
First Quarter Payroll	1.0139 (0.0271)	1.0142* (0.0058)	.9895 (0.0291)
Annual Payroll	1.0002 (0.0063)	1.0102 (0.0065)	1.0080 (0.0059)
Receipts	1.0365* (0.0147)	1.0055** (0.0031)	.9738** (0.0136)

\* significant at  $\alpha = 0.05$

\*\* significant at  $\alpha = 0.10$

Table A.1d Ratios of Estimates of U.S. Totals  
Multiunits - Manufactures

Census Item	$\hat{R}_1 = \frac{X'_{rein}}{X'_{tab}}$ (s.e. of $\hat{R}$ )	$\hat{R}_2 = \frac{X'_{rein}}{X'_{rep}}$ (s.e. of $\hat{R}$ )	$\hat{R}_3 = \frac{X'_{tab}}{X'_{rep}}$ (s.e. of $\hat{R}$ )
March Employment	.9931 (0.0079)	.9899 (0.0065)	.9971 (0.0043)
Annual Payroll	1.0005 (0.0127)	1.0047 (0.0115)	1.0043 (0.0050)
Value of Products Shipped	1.0476 (0.0344)	1.0367 (0.0323)	.9998 (0.0015)

Table A.2d Ratios of Estimates of U.S. Totals  
Single Units - Manufactures

Census Item	$\hat{R}_1 = \frac{X'_{rein}}{X'_{tab}}$ (s.e. of $\hat{R}$ )	$\hat{R}_2 = \frac{X'_{rein}}{X'_{rep}}$ (s.e. of $\hat{R}$ )	$\hat{R}_3 = \frac{X'_{tab}}{X'_{rep}}$ (s.e. of $\hat{R}$ )
March Employment	1.0149 (0.0054)	1.0006 (0.0021)	.9879* (0.0045)
Annual Payroll	1.0481* (0.0176)	1.0215 (0.0170)	.9760* (0.0089)
Value of Products Shipped	1.0232 (0.0182)	1.0123** (0.0074)	1.0052 (0.0032)

\* significant at  $\alpha = 0.05$

\*\* significant at  $\alpha = 0.10$

**APPENDIX B:**  
**Components of Total Corrections**  
**for Single Units and Multiunits**

Table B.1a Components of Total Correction  
 Retail Trade - Employment

(Total number of cases: single units 362,040 weighted and 977 unweighted)  
 (Total number of cases: multiunits 284,633 weighted and 189 unweighted)

Component (included in reported figure in error or excluded from reported figure in error)		Single Unit				Multiunits					
		No. of Elig. Cases	No. of Cases Req. Corr.	No. of Cases Prov. Book or Reliable Corr.	Total Corr. For Component (number of employees)	No. of Elig. Cases	No. of Cases Req. Corr.	No. of Cases Prov. Book or Reliable Corr.	Total Corr. For Component (number of employees)		
1. Correction for item non-response on census form	wt	10,778	10,778	10,778	118,146	11,193	11,193	11,193	100,737		
	unwt	29	29	29	318	7	7	7	63		
2. Correction for estimation on census form	wt	16,356	16,356	10,406	11,891	33,582	33,582	17,589	-94,341		
	unwt	45	45	29	42	24	24	11	-59		
3. Persons on paid leave (sick holiday, vacation) excluded	wt	248,663	742	371	371	247,856	7,996	0	0		
	unwt	672	2	1	1	166	6	0	0		
4. Persons working at establishment but excluded*	wt	347,910	7,064	2,602	5,204	260,645	9,594	4,797	7,995		
	unwt	939	19	7	14	171	6	3	5		
5. Persons working at another establishment of same company but included for sample establishment	wt	8,547	0	0	0	228,662	1,599	1,599	-4,797		
	unwt	23	0	0	0	148	1	1	-3		
6. Temporary or part-time workers not included at all	wt	290,304	5,576	1,487	2,975	251,054	6,398	1,599	1,599		
	unwt	784	15	4	8	168	6	1	1		
7. Correction for temporary or part-time workers included by full-time equivalent count	wt	3,716	3,716	3,716	7,430	6,396	6,396	6,396	1,599		
	unwt	10	10	10	20	4	4	4	1		
8. Persons employed by establishment but supplied to different company and excluded*	wt	1,486	371	0	0	3,199	1,600	0	0		
	unwt	4	1	0	0	3	2	0	0		
9. Persons employed by different company, supplied to sample establishment and included*	wt	23,790	0	0	0	63,966	2	0	0		
	unwt	65	0	0	0	46	2	0	0		
10. Corporate officers or executives excluded	wt	178,414	8,183	7,067	11,905	105,541	6,396	6,396	6,396		
	unwt	482	22	19	32	73	4	4	4		
11. Partners or proprietors included	wt	160,579	9,671	8,555	-10,786	17,589	1,599	1,599	-3,198		
	unwt	433	27	24	-30	11	1	1	-2		
12. Persons still paid while temporarily away from job, excluded*	wt	23,434	0	0	0	143,920	3,198	0	0		
	unwt	65	0	0	0	100	2	0	0		
		Total correction for single unit components 2 - 12				wt	28,990	Total corrections for multi-unit components 2 - 12		wt	-84,747
						unwt	87			unwt	-53

## \*Examples:

4 - Management trainees counted at headquarters

8 or 9 - Janitorial Service workers, temporary secretarial service workers, maintenance or repair workers

12 - Jury duty or military reserve training

Table B.2a Components of Total Correction  
Retail Trade - First Quarter Payroll

(Total number of cases: single units 360,181 weighted and 974 unweighted)  
(Total number of cases: multiunits 283,034 weighted and 188 unweighted)

Component (included in reported figure in error or excluded from reported figure in error)		Single Unit				Multiunits			
		No. of Elig. Cases	No. of Cases Req. Corr.	No. of Cases Prov. Book or Reliable Corr.	Total Corr. For Component (dollars of payroll)	No. of Elig. Cases	No. of Cases Req. Corr.	No. of Cases Prov. Book or Reliable Corr.	Total Corr. For Component (dollars of payroll)
1. Correction for item non- response on census form	wt unwt	19,338 53	19,338 53	19,338 53	\$345,772,000 3,024,089	12,792 8	12,792 8	12,792 8	\$131,232,000 82,071
2. Correction for estimation on census form	wt unwt	35,312 95	35,312 95	26,389 71	9,506,000 25,255	27,184 18	27,184 18	19,189 13	-108,989,000 891,240
3. Payroll for persons working at establishment but excluded**	wt unwt	347,536 940	3,343 9	1,115 3	860,000 2,316	262,245 173	4,797 3	1,599 1	3,598,000 2,250
4. Payroll for persons working at another establishment of same company but included**	wt unwt	8,549 23	0 0	0 0	0 0	231,862 152	3,198 2	1,599 1	-8,906,000 -5,570
5. Payroll for temporary or part-time workers, excluded**	wt unwt	288,445 780	2,230 6	0 0	0 0	251,054 168	3,199 3	0 0	0 0
6. Payroll for persons employed by establishment but supplied to different company, excluded**	wt unwt	1,486 4	371 1	0 0	0 0	3,199 3	1,600 2	0 0	0 0
7. Payroll for persons employed by different company, supplied to same establishment, included**	wt unwt	23,420 65	372 1	372 1	-558,000 -1,500	60,768 44	1 1	0 0	0 0
8. Payroll for corporate officers or executives, excluded**	wt unwt	177,298 479	2,975 8	1,114 3	6,278,000 16,922	107,140 74	7,995 5	4,797 3	27,583,000 17,250
9. Payments to partners or proprietors, included**	wt unwt	159,093 430	5,949 17	5,205 15	-15,460,000 -55,578	17,589 11	0 0	0 0	0 0
10. Payroll for persons still paid while temporarily away from job, excluded**	wt unwt	33,471 92	372 1	0 0	0 0	142,321 99	1,599 1	0 0	0 0
11. Retirement contributions excluded	wt unwt	18,208 51	3,715 10	2,231 6	2,536,000 6,817	65,564 46	6,397 5	1,600 2	295,000 212,052
12. Employees' portion of group insurance premiums excluded	wt unwt	70,651 192	9,662 26	6,690 18	4,884,000 13,149	187,092 126	11,193 7	6,396 4	1,764,000 1,103
13. Union dues excluded	wt unwt	6,685 19	372 1	0 0	0 0	38,381 29	0 0	0 0	0 0
14. Savings bonds, savings allotments, excluded	wt unwt	5,211 16	0 0	0 0	0 0	103,945 75	0 0	0 0	0 0
15. Charitable contributions excluded	wt unwt	8,189 24	372 1	0 0	0 0	95,949 69	0 0	0 0	0 0

Table B.2a Components of Total Correction  
Retail Trade - First Quarter Payroll  
Continued

Component (included in reported figure in error or excluded from reported figure in error)		Single Unit				Multiunits			
		No. of Elig. Cases	No. of Cases Req. Corr.	No. of Cases Prov. Book or Reliable Corr.	Total Corr. For Component (dollars of payroll)	No. of Elig. Cases	No. of Cases Req. Corr.	No. of Cases Prov. Book or Reliable Corr.	Total Corr. For Component (dollars of payroll)
16. Garnishments excluded*	wt	19,712	0	0	0	108,741	0	0	0
	unwt	56	0	0	0	77	0	0	0
17. Employees' portion of FICA payments excluded	wt	359,439	3,343	1,859	\$884,000	279,836	0	0	
	unwt	972	9	5	2,375	186	0	0	0
18. Withholding taxes excluded	wt	359,066	2,972	1,488	1,500,000	279,836	0	0	0
	unwt	971	8	4	1,150	186	0	0	0
19. Tips reported to employer excluded	wt	46,099	2,977	1,488	1,267,000	33,582	7,995	0	0
	unwt	124	8	4	3,407	24	5	0	0
20. Bonuses excluded	wt	165,806	2,976	0	0	199,885	11,193	0	0
	unwt	451	8	0	0	135	7	0	0
21. Commissions excluded	wt	78,446	1,489	372	5,338,000	107,138	0	0	0
	unwt	214	4	1	14,350	72	0	0	0
22. Compensation in kind excluded*	wt	27,504	7,060	1,113	1,160,000	33,580	7,995	0	0
	unwt	74	19	3	3,125	22	5	0	0
23. Dismissed or severance pay excluded	wt	47,934	371	0	0	159,911	0	0	0
	unwt	132	1	0	0	111	0	0	0
24. Vacation pay excluded	wt	275,057	742	0	0	255,851	3,198	0	0
	unwt	743	2	0	0	171	2	0	0
25. Holiday pay excluded	wt	244,586	371	0	0	249,455	3,198	1,599	\$160,000
	unwt	662	1	0	0	167	2	1	100
26. Sick leave pay excluded	wt	181,004	371	0	0	222,272	3,198	0	0
	unwt	489	1	0	0	150	2	0	0
27. Payments from Expense Accounts included	wt	189,966	372	0	0	190,289	4,797	0	0
	unwt	514	1	0	0	127	3	0	0
28. Employers' costs for fringe benefits included	wt	345,314	5,202	4,087	-1,580,000	267,043	17,590	12,793	-28,221,000
	unwt	934	14	11	-4,257	177	12	9	-429,641
29. Retroactive payments paid in 1977 for work performed in 1976, included	wt	349,026	1	1	-755,000	235,059	3,199	0	0
	unwt	944	1	1	-754,837	153	3	0	0
30. Retroactive payments paid in 1978 for work performed in 1977, excluded	wt	349,398	373	373	17,000	235,058	3,198	0	0
	unwt	944	1	1	46	152	2	0	0
		Total correction for single unit components 2 - 30			wt \$15,922,000	Total corrections for multi- unit components 2 - 30			wt \$-112,716,000
					unwt -724,259				unwt 688,784

## \* Examples:

16. Court awarded child support withheld from pay check.  
22. Holiday turkeys, meals for restaurants workers.  
29, 30. Court awarded back pay.

\*\* correction is for payroll amounts included in or excluded from reported figure, regardless of whether corresponding employees were included in or excluded from reported employment figure, see examples table 7.5a.

Table B.3a Components of Total Correction  
Retail Trade - Annual Payroll

(Total number of cases: single units 366,129 weighted and 991 unweighted)  
(Total number of cases: multiunits 287,831 weighted and 191 unweighted)

Component (included in reported figure in error or excluded from reported figure in error)		Single Unit				Multiunits			
		No. of Elig. Cases	No. of Cases Req. Corr.	No. of Cases Prov. Book or Reliable Corr.	Total Corr. For Component (dollars of payroll)	No. of Elig. Cases	No. of Cases Req. Corr.	No. of Cases Prov. Book or Reliable Corr.	Total Corr. For Component (dollars of payroll)
1. Correction for item non- response on census form	wt unwt	11,901 33	11,901 33	11,901 33	\$928,625,000 8,869,747	7,995 5	7,995 5	7,995 5	\$325,223,000 203,391
2. Correction for estimation on census form	wt unwt	41,256 112	41,256 112	33,822 92	52,803,000 -4,561,406	23,986 16	23,986 16	19,189 13	-631,315,000 389,691
3. Payroll for persons working at establishment but excluded**	wt unwt	353,484 957	3,715 10	1,115 3	1,417,000 3,814	265,443 175	4,797 3	3,198 2	110,331,000 69,000
4. Payroll for persons working at another establishment of same company but included**	wt unwt	8,928 24	0 0	0 0	0 0	235,060 154	3,198 2	1,599 0	-40,060,000 -25,053
5. Payroll for temporary or part-time workers, excluded**	wt unwt	293,650 795	2,230 6	743 2	4,176,000 11,240	255,851 171	3,199 3	0 0	0 0
6. Payroll for persons employed by establishment but supplied to different company, excluded**	wt unwt	1,486 4	371 1	0 0	0 0	3,199 3	1,600 2	0 0	0 0
7. Payroll for persons employed by different company, supplied to sample establishment, included**	wt unwt	23,792 66	372 1	372 1	-2,604,000 -7,000	60,769 44	1 1	0 0	0 0
8. Payroll for corporate officers or executives, excluded**	wt unwt	180,270 487	4,089 11	1,485 4	24,579,000 66,249	107,140 74	7,995 5	4,797 3	110,331,000 69,000
9. Payments to partners or proprietors, included**	wt unwt	161,324 436	5,949 17	5,205 15	-65,740,000 -218,857	17,589 11	0 0	0 0	0 0
10. Payroll for persons still paid while temporarily away from job, excluded**	wt unwt	33,844 93	372 1	0 0	0 0	145,519 101	1,599 1	0 0	0 0
11. Retirement contributions excluded	wt unwt	18,579 52	4,829 13	3,716 10	13,873,000 37,308	65,564 46	6,397 5	4,798 4	16,876,000 959,960
12. Employees' portion of group insurance premiums excluded	wt unwt	71,393 194	10,033 27	8,176 22	22,474,000 60,504	190,290 128	11,193 7	7,995 5	8,592,000 5,373
13. Union dues excluded	wt unwt	6,685 19	743 2	0 0	0 0	38,381 29	0 0	0 0	0 0
14. Savings bonds, savings allotments, excluded	wt unwt	5,211 16	0 0	0 0	0 0	105,544 76	0 0	0 0	0 0
15. Charitable contributions excluded	wt unwt	8,189 24	743 2	371 1	167,000 450	95,949 69	0 0	0 0	0 0

Table B.3a Components of Total Correction  
Retail Trade - Annual Payroll  
Continued

Component (included in reported figure in error or excluded from reported figure in error)		No. of Elig. Cases	Single Unit			No. of Elig. Cases	Multiunits		Total Corr. For Component (dollars of payroll)
			No. of Cases Req. Corr.	No. of Cases Prov. Book or Reliable Corr.	Total Corr. For Component (dollars of payroll)		No. of Cases Req. Corr.	No. of Cases Prov. Book or Reliable Corr.	
16. Garnishments excluded*	wt	19,712	0	0	0	111,939	0	0	0
	unwt	56	0	0	0	79	0	0	0
17. Employees' portion of FICA payments excluded	wt	365,387	3,343	1,859	\$5,116,000	284,633	0	0	0
	unwt	989	9	5	13,768	189	0	0	0
18. Withholding taxes excluded	wt	364,642	2,972	1,488	5,800,000	284,633	0	0	0
	unwt	987	8	4	15,593	189	0	0	0
19. Tips reported to employer excluded	wt	48,703	4,093	2,604	8,980,000	33,582	7,995	0	0
	unwt	131	11	7	24,139	24	5	0	0
20. Bonuses excluded	wt	168,408	5,579	3,718	3,041,000	203,083	12,793	9,595	\$57,778,000
	unwt	458	16	10	8,175	137	9	7	66,115
21. Commissions excluded	wt	79,562	1,489	372	21,355,000	107,138	0	0	0
	unwt	217	4	1	57,406	72	0	0	0
22. Compensation in kind excluded*	wt	28,619	9,290	1,856	4,909,000	35,179	7,995	0	0
	unwt	77	25	5	13,236	23	5	0	0
23. Dismissal or severance pay excluded	wt	48,305	371	0	0	161,510	0	0	0
	unwt	133	1	0	0	112	0	0	0
24. Vacation pay excluded	wt	276,916	742	371	4,000	259,049	4,797	1,599	1,599,000
	unwt	748	2	1	10	173	3	1	1,000
25. Holiday pay excluded	wt	246,445	371	0	0	252,653	3,198	1,599	800,000
	unwt	668	1	0	0	169	2	1	500
26. Sick leave pay excluded	wt	182,863	371	0	0	225,470	3,198	0	0
	unwt	495	1	0	0	152	2	0	0
27. Payments from Expense Accounts included	wt	194,430	1,486	743	-409,000	193,487	4,797	0	0
	unwt	527	4	2	-1,100	129	3	0	0
28. Employers' costs for fringe benefits included	wt	351,262	5,945	4,830	-6,674,000	271,840	19,189	14,392	-123,238,000
	unwt	951	16	13	-17,968	180	13	10	-1,540,156
29. Retroactive payments paid in 1977 for work performed in 1976, included	wt	354,601	1	1	-755,000	238,257	3,199	0	0
	unwt	960	1	1	-754,837	155	3	0	0
30. Retroactive payments paid in 1978 for work performed in 1977, excluded	wt	354,973	373	373	28,000	238,256	3,198	1,599	8,850,000
	unwt	960	1	1	74	154	2	1	5,535
			Total correction for single unit components 2 - 30		wt \$92,540,000 unwt -5,249,202	Total corrections for multi- unit components 2 - 30		wt unwt	\$-479,456,000 965

## \* Examples:

16. Court awarded child support withheld from pay check.  
22. Holiday turkeys, meals for restaurants workers.  
29, 30 Court awarded back pay.

\*\* correction is for payroll amounts included in or excluded from reported figure, regardless of whether corresponding employees were included in or excluded from reported employment figure, see examples table 7.5a.

Table B.4a Components of Total Correction  
Retail Trade - Sales

(Total number of cases: single units 367,985 weighted and 996 unweighted)  
(Total number of cases: multiunits 289,430 weighted and 192 unweighted)

Component (included in reported figure in error or excluded from reported figure in error)		Single Unit			Total Corr. For Component (dollars of sales)	No. of Elig. Cases	No. of Cases Req. Corr.	Multiunits		Total Corr. For Component (dollars of sales)
		No. of Elig. Cases	No. of Cases Req. Corr.	No. of Cases Prov. Book or Reliable Corr.				No. of Cases Prov. Book or Reliable Corr.		
1. Correction for item non- response on census form	wt unwt	5,577 15	5,577 15	5,577 15	\$2,788,770,000 7,510,745	3,198 2	3,198 2	3,198 2	\$855,742,000 535,173	
2. Correction for estimation on census form	wt unwt	40,883 111	40,883 111	34,566 94	1,570,737,000 -41,162,908	23,986 16	23,986 16	15,991 11	838,729,000 8,675,433	
3. Sales tax included	wt unwt	332,309 899	65,416 176	49,807 134	-825,297,000 -2,219,014	273,440 182	23,985 15	14,391 9	-463,941,000 -290,144	
4. Labor charges excluded	wt unwt	136,054 370	3,347 9	2,232 6	33,106,000 88,876	59,168 42	6,397 5	1,600 2	98,000 2,377	
5. Receipts for parts installed in repair work excluded	wt unwt	120,808 329	743 2	0 0	0 0	46,374 32	3,199 3	3,198 2	3,431,000 2,146	
6. Delivery charges excluded	wt unwt	67,289 183	3,344 9	744 2	1,265,000 3,400	39,984 34	12,794 10	3,200 4	23,470,000 21,376,546	
7. Layaway purchases excluded	wt unwt	65,818 178	742 2	371 1	7,791,000 21,000	67,158 42	3,198 2	0 0	0 0	
8. Rental or leasing of vehicles, equipment, etc. to customers, excluded	wt unwt	36,810 101	743 2	372 1	3,349,000 9,003	23,986 16	3,198 2	1,599 1	1,442,000 902	
9. Excise taxes excluded	wt unwt	96,649 260	1,859 5	1,487 4	19,831,000 53,352	76,753 49	12,792 8	3,198 2	348,652,000 218,044	
10. Income from sale of land or buildings included	wt unwt	58,014 158	372 1	372 1	-14,136,000 -38,000	76,757 53	0 0	0 0	0 0	
11. Income from sale of investments or assets included	wt unwt	63,225 173	1,116 3	1,116 3	-91,148,000 -245,022	78,357 55	0 0	0 0	0 0	
12. Interest or Dividends included	wt unwt	91,845 249	11,519 31	8,918 24	-32,445,000 -87,351	89,551 63	0 0	0 0	0 0	
13. Income from rental of real estate included	wt unwt	69,161 188	6,687 18	5,572 15	-44,069,000 -118,640	81,553 55	0 0	0 0	0 0	
14. Carrying or credit charges included	wt unwt	92,561 250	26,012 70	8,544 23	-33,847,000 -91,090	100,745 71	17,592 14	4,798 4	-156,528,000 -5,053,790	
15. Commissions from vending machines operated by a different company included	wt unwt	89,963 245	39,037 106	21,559 59	-21,603,000 -60,116	116,732 78	23,986 16	9,595 7	-4455,000 -5185	
16. Rent from operators of leased departments or concessions located in the sample establishment, included	wt unwt	27,503 74	1,115 3	743 2	-4,868,000 -13,090	27,189 23	0 0	0 0	0 0	
17. Discounts, allowances, refunds, etc. not deducted from reported figure	wt unwt	240,507 651	11,895 32	7,061 19	-24,163,000 -65,031	220,673 149	17,590 12	3,199 3	-12,965,000 -4,963,606	
18. Value of trade-ins excluded	wt unwt	91,822 250	16,357 45	1,859 5	46,539,000 125,131	67,159 43	9,594 6	1,599 1	1,599,000 1,000	
		Total correction for single unit components 2 - 18		wt unwt	\$591,042,000 -43,799,500	Total corrections for multi- unit components 2 - 18		wt unwt	\$579,532,000 19,963,723	



Table B.1b Components of Total Correction  
Wholesale Trade - Employment

(Total number of cases: single units 168,343 weighted and 412 unweighted)  
(Total number of cases: multiunits 99,471 weighted and 183 unweighted)

Component (included in reported figure in error or excluded from reported figure in error)		Single Unit				Multiunits				
		No. of Elig. Cases	No. of Cases Req. Corr.	No. of Cases Prov. Book or Reliable Corr.	Total Corr. For Component (number of employees)	No. of Elig. Cases	No. of Cases Req. Corr.	No. of Cases Prov. Book or Reliable Corr.	Total Corr. For Component (number of employees)	
1. Correction for item non- response on census form	wt unwt	4,102 10	4,102 10	4,102 10	27,480 67	592 1	592 1	592 1	592 1	
2. Correction for estimation on census form	wt unwt	6,565 16	6,565 16	4,924 12	3,690 9	4,736 8	4,736 8	4,144 7	-18,944 -32	
3. Persons on paid leave (sick holiday, vacation) excluded	wt unwt	134,264 329	0 0	0 0	0 0	89,996 164	592 1	0 0	0 0	
4. Persons working at establish- ment but excluded*	wt unwt	156,020 382	2,873 7	2,053 5	3,284 8	91,177 163	2,368 4	1,776 3	2,368 4	
5. Persons working at another establishment of same company but included for sample establishment	wt unwt	2,462 6	410 1	410 1	-410 -1	77,558 137	3,554 8	2,960 5	-18,352 -31	
6. Temporary or part-time workers not included at all	wt unwt	87,046 213	2,874 7	2,051 5	5,742 14	46,183 85	3,552 6	1,776 3	2,368 4	
7. Correction for temporary or part-time workers included by full-time equivalent count	wt unwt	411 1	411 1	411 1	411 1	0 0	0 0	0 0	0 0	
8. Persons employed by establishment but supplied to different company and excluded*	wt unwt	820 2	0 0	0 0	0 0	2,369 5	593 2	0 0	0 0	
9. Persons employed by different company, supplied to sample establishment and included*	wt unwt	12,307 30	821 2	0 0	0 0	17,170 31	0 0	0 0	0 0	
10. Corporate officers or executives excluded	wt unwt	118,660 291	5,757 14	5,757 14	9,037 22	55,065 102	2,960 5	2,960 5	5,920 10	
11. Partners or proprietors included	wt unwt	34,490 84	821 2	821 2	-821 -2	1,776 3	592 1	592 1	-592 -1	
12. Persons still paid while temporarily away from job, excluded*	wt unwt	18,918 48	0 0	0 0	0 0	47,370 90	0 0	0 0	0 0	
		Total correction for single unit components 2 - 12				wt 20,933 unwt 51	Total corrections for multi unit components 2 - 12			
							wt -27,232 unwt -46			

## \*Examples:

4 - Management trainees counted  
at headquarters8 or 9 - Janitorial Service workers,  
temporary secretarial service  
workers, maintenance or repair  
workers12 - Jury duty or military reserve  
training

Table B.2b Components of Total Correction  
Wholesale Trade - First Quarter Payroll

(Total number of cases: single units 166,294 weighted and 407 unweighted)  
(Total number of cases: multiunits 100,655 weighted and 185 unweighted)

Component (included in reported figure in error or excluded from reported figure in error)		Single Unit				Multiunits			
		No. of Elig. Cases	No. of Cases Req. Corr.	No. of Cases Prov. Book or Reliable Corr.	Total Corr. For Component (thousands of dollars)	No. of Elig. Cases	No. of Cases Req. Corr.	No. of Cases Prov. Book or Reliable Corr.	Total Corr. For Component (thousands of dollars)
1. Correction for item non- response on census form	wt unwt	9,452 23	9,452 23	9,452 23	\$230,109 561	1,777 4	1,777 4	1,777 4	\$16,835 2,092
2. Correction for estimation on census form	wt unwt	18,072 44	18,072 44	16,019 39	-61,147 -149	8,288 14	8,288 14	7,696 13	-94,163 -159
3. Payroll for persons working at establishment but excluded**	wt unwt	154,808 379	2,462 6	1,231 3	1,077 3	94,137 168	592 1	592 1	3,848 7
4. Payroll for persons working at another establishment of same company but included**	wt unwt	2,462 6	410 1	410 1	-4,264 -10	76,969 139	5,331 12	4,145 8	-76,941 -155
5. Payroll for temporary or part-time workers, excluded**	wt unwt	84,175 206	1,231 3	410 1	184 #0	45,000 84	592 1	592 1	304 1
6. Payroll for persons employed by establishment but supplied to different company, excluded**	wt unwt	2,050 5	820 2	0 0	0 0	2,369 5	592 1	0 0	0 0
7. Payroll for persons employed by different company, supplied to same establishment, included**	wt unwt	12,717 31	410 1	0 0	0 0	17,170 31	0 0	0 0	0 0
8. Payroll for corporate officers or executives, excluded**	wt unwt	114,970 282	1,642 4	1,231 3	12,101 30	55,065 102	2,368 4	2,368 4	13,616 24
9. Payments to partners or proprietors, included**	wt unwt	34,490 34	821 2	821 2	-1,806 -4	1,776 3	0 0	0 0	0 0
10. Payroll for persons still paid while temporarily away from job, excluded**	wt unwt	21,379 54	0 0	0 0	0 0	48,555 93	0 0	0 0	0 0
11. Retirement contributions excluded	wt unwt	12,310 32	2,461 6	1,641 4	6,213 15	23,684 44	1,184 2	592 1	1,658 3
12. Employees' portion of group insurance premiums excluded	wt unwt	42,275 105	5,742 14	4,921 12	3,060 5	63,944 116	3,552 6	0 0	0 0
13. Union dues excluded	wt unwt	3,282 8	820 2	410 1	5 #0	15,985 28	1,776 3	0 0	0 0
14. Savings bonds, savings allotments, excluded	wt unwt	2,874 9	0 0	0 0	0 0	44,406 81	1,184 2	0 0	0 0
15. Charitable contributions excluded	wt unwt	2,051 5	0 0	0 0	0 0	37,302 69	592 1	0 0	0 0

Table B.2b Components of Total Correction  
Wholesale Trade - First Quarter Payroll  
Continued

Component (included in reported figure in error or excluded from reported figure in error)		No. of Elig. Cases	No. of Cases Req. Corr.	Single Unit		Total Corr. For Component (thousands of dollars)	No. of Elig. Cases	No. of Cases Req. Corr.	Multiunits		Total Corr. For Component (thousands of dollars)
				No. of Cases Prov. Book or Reliable Corr.	Total Corr. For Component (thousands of dollars)				No. of Cases Prov. Book or Reliable Corr.	Total Corr. For Component (thousands of dollars)	
16. Garnishments excluded*	wt	5,744	0	0	0	0	34,936	592	0	0	0
	unwt	14	0	0	0	0	67	1	0	0	0
17. Employees' portion of FICA payments excluded	wt	165,884	822	822	\$344	\$344	95,324	1,184	0	0	0
	unwt	406	2	2	1	1	173	2	0	0	0
18. Withholding taxes excluded	wt	165,473	822	822	1,352	1,352	95,324	592	592		\$3,117
	unwt	405	2	2	3	3	173	1	1		5
19. Other items not included	wt	0	0	0	0	0	592	0	0	0	0
	unwt	0	0	0	0	0	1	0	0	0	0
20. Bonuses excluded	wt	99,748	820	410	33	33	74,603	1,185	1	1	410
	unwt	245	2	1	#0	#0	137	3	1	1	410
21. Commissions excluded	wt	64,473	2,050	820	1,436	1,436	60,393	0	0	0	0
	unwt	159	5	2	4	4	111	0	0	0	0
22. Compensation in kind excluded*	wt	4,923	820	410	246	246	7,696	1,184	592		3,552
	unwt	12	2	1	1	1	13	2	1		6
23. Dismissed or severance pay excluded	wt	28,749	0	0	0	0	56,842	592	0	0	0
	unwt	71	0	0	0	0	106	1	0	0	0
24. Vacation pay excluded	wt	135,898	0	0	0	0	93,548	0	0	0	0
	unwt	333	0	0	0	0	170	0	0	0	0
25. Holiday pay excluded	wt	136,310	0	0	0	0	92,364	0	0	0	0
	unwt	334	0	0	0	0	168	0	0	0	0
26. Sick leave pay excluded	wt	118,228	0	0	0	0	87,036	592	0	0	0
	unwt	290	0	0	0	0	159	1	0	0	0
27. Payments from Expense Accounts included	wt	151,938	3,281	2,051	-790	-790	91,769	1,776	1,184		-503
	unwt	372	8	5	-1	-1	164	3	2		-1
28. Employers' costs for fringe benefits included	wt	155,203	2,051	1,231	-850	-850	91,769	3,553	1,777		-1,812
	unwt	380	5	3	-2	-2	164	7	4		-90
29. Retroactive payments included or excluded in error*	wt	0	0	0	0	0	0	0	0	0	0
	unwt	0	0	0	0	0	0	0	0	0	0
		Total correction for single unit components 2 - 29				wt	\$-42,806	Total corrections for multi- unit components 2 - 29		wt	\$-146,914
						unwt	\$-103			unwt	\$51

\* Examples:

16. Court awarded child support withheld from pay check.  
22. Holiday turkeys, subsidized meals for employees  
29. Court awarded back pay, component is usually amount  
paid in 1977 for work performed in 1976 (subtracted)  
or paid in 1978 for work performed in 1977 (added)

\*\* Correction is for payroll amounts included in or excluded from  
reported figure, regardless of whether corresponding  
employees were included in or excluded from reported  
employment figure, see examples table 7.5a.

# Actual number is less than \$500.

Table B.3b Components of Total Correction  
Wholesale Trade - Annual Payroll

(Total number of cases: single units 169,164 weighted and 414 unweighted)  
(Total number of cases: multiunits 101,839 weighted and 187 unweighted)

Component (included in reported figure in error or excluded from reported figure in error)		Single Unit				Multiunits			
		No. of Elig. Cases	No. of Cases Req. Corr.	No. of Cases Prov. Book or Reliable Corr.	Total Corr. For Component (thousands of dollars)	No. of Elig. Cases	No. of Cases Req. Corr.	No. of Cases Prov. Book or Reliable Corr.	Total Corr. For Component (thousands of dollars)
1. Correction for item non- response on census form	wt unwt	2,870 7	2,870 7	2,870 7	\$295,824 722	1,185 3	1,185 3	1,185 3	\$45,974 11,726
2. Correction for estimation on census form	wt unwt	16,427 40	16,427 40	15,607 38	65,743 160	8,288 14	8,288 14	7,696 13	-428,569 -724
3. Payroll for persons working at establishment but excluded**	wt unwt	157,678 386	2,462 6	1,642 4	15,435 38	95,321 170	592 1	592 1	15,392 26
4. Payroll for persons working at another establishment of same company but included**	wt unwt	2,462 6	410 1	410 1	-19,967 -49	77,561 140	5,331 12	4,738 10	-378,561 -832
5. Payroll for temporary or part-time workers, excluded**	wt unwt	85,405 209	2,053 5	1,232 3	6,275 16	45,592 85	592 1	592 1	821 1
6. Payroll for persons employed by establishment but supplied to different company, excluded**	wt unwt	2,050 5	820 2	0 0	0 0	2,369 5	592 1	0 0	0 0
7. Payroll for persons employed by different company, supplied to same establishment, included**	wt unwt	12,717 31	821 2	0 0	0 0	17,170 31	0 0	0 0	0 0
8. Payroll for corporate officers or executives, excluded**	wt unwt	117,430 288	2,462 6	1,641 4	48,404 118	55,065 102	2,368 4	2,368 4	55,056 93
9. Payments to partners or proprietors, included**	wt unwt	35,310 86	821 2	821 2	-8,868 -22	2,368 4	0 0	0 0	0 0
10. Payroll for persons still paid while temporarily away from job, excluded**	wt unwt	21,379 54	0 0	0 0	0 0	49,147 94	0 0	0 0	0 0
11. Retirement contributions excluded	wt unwt	12,310 32	3,282 8	2,872 7	32,116 77	24,276 45	1,776 3	1,184 2	20,720 35
12. Employees' portion of group insurance premiums excluded	wt unwt	43,095 107	5,742 14	4,921 12	11,941 28	64,536 117	3,552 6	592 1	125 #0
13. Union dues excluded	wt unwt	3,282 8	820 2	410 1	20 #0	15,985 28	1,776 3	0 0	0 0
14. Savings bonds, savings allotments, excluded	wt unwt	2,874 9	0 0	0 0	0 0	44,998 82	1,184 2	0 0	0 0
15. Charitable contributions excluded	wt unwt	2,461 6	410 1	410 1	41 #0	37,894 70	592 1	0 0	0 0

Table B.3b Components of Total Correction  
Wholesale Trade - Annual Payroll  
Continued

Component (included in reported figure in error or excluded from reported figure in error)		No. of Elig. Cases	No. of Cases Req. Corr.	Single Unit		Total Corr. For Component (thousands of dollars)	No. of Elig. Cases	No. of Cases Req. Corr.	Multiunits		Total Corr. For Component (thousands of dollars)
				No. of Cases Prov. Book or Reliable Corr.					No. of Cases Prov. Book or Reliable Corr.		
16. Garnishments excluded*	wt	6,154	0	0	0	0	34,936	592	0	0	0
	unwt	15	0	0	0	0	67	1	0	0	0
17. Employees' portion of FICA payments excluded	wt	168,754	822	822	\$1,427	96,508	96,508	1,776	592		\$4,144
	unwt	413	2	2	4	175	175	3	1		7
18. Withholding taxes excluded	wt	168,343	822	822	6,620	96,508	96,508	592	592		14,814
	unwt	412	2	2	16	175	175	1	1		25
19. Other items not included	wt	0	0	0	0	592	592	0	0		0
	unwt	0	0	0	0	1	1	0	0		0
20. Bonuses excluded	wt	101,798	1,640	1,230	2,951	75,195	75,195	1,777	593		9,114
	unwt	250	4	3	7	138	138	4	2		1,243
21. Commissions excluded	wt	65,293	2,460	1,640	21,000	61,577	61,577	0	0		0
	unwt	161	6	4	52	113	113	0	0		0
22. Compensation in kind excluded*	wt	4,923	820	410	1,025	7,696	7,696	1,184	592		14,208
	unwt	12	2	1	3	13	13	2	1		24
23. Dismissal or severance pay excluded	wt	28,749	0	0	0	57,434	57,434	592	0		0
	unwt	71	0	0	0	107	107	1	0		0
24. Vacation pay excluded	wt	137,538	0	0	0	94,140	94,140	0	0		0
	unwt	337	0	0	0	171	171	0	0		0
25. Holiday pay excluded	wt	138,770	0	0	0	92,956	92,956	0	0		0
	unwt	340	0	0	0	169	169	0	0		0
26. Sick leave pay excluded	wt	119,868	0	0	0	87,628	87,628	592	0		0
	unwt	294	0	0	0	160	160	1	0		0
27. Payments from Expense Accounts included	wt	154,808	3,691	2,871	-12,151	92,953	92,953	1,776	1,184		-2,013
	unwt	379	9	7	-30	166	166	3	2		-3
28. Employers' costs for fringe benefits included	wt	157,663	2,051	1,231	-1,849	92,953	92,953	3,553	2,369		-39,520
	unwt	386	5	3	-5	166	166	7	5		-272
29. Retroactive payments included or excluded in error	wt	0	0	0	0	0	0	0	0		0
	unwt	0	0	0	0	0	0	0	0		0
Total correction for single unit components 2 - 29						wt \$170,163 unwt 413	Total corrections for multi- unit components 2 - 29				wt \$-714,269 unwt -377

## \* Examples:

16. Court awarded child support withheld from pay check.  
22. Holiday turkeys, subsidized meals for employees  
29. Court awarded back pay, component is usually amount  
paid in 1977 for work performed in 1976 (subtracted)  
or paid in 1978 for work performed in 1977 (added)

\*\* Correction is for payroll amounts included in or excluded from  
reported figure, regardless of whether corresponding  
employees were included in or excluded from reported  
employment figure, see examples table 7.5a.

# Actual number is less than \$500

Table B.4b Components of Total Correction  
Wholesale Trade - Sales

(Total number of cases: single units 169,572 weighted and 415 unweighted)  
(Total number of cases: multiunits 103,024 weighted and 190 unweighted)

Component (included in reported figure in error or excluded from reported figure in error)		Single Unit				Multiunits				
		No. of Elig. Cases	No. of Cases Req. Corr.	No. of Cases Prov. Book or Reliable Corr.	Total Corr. For Component (dollars of sales)	No. of Elig. Cases	No. of Cases Req. Corr.	No. of Cases Prov. Book or Reliable Corr.	Total Corr. For Component (dollars of sales)	
1. Correction for item non- response on census form	wt unwt	2,870 7	2,870 7	2,870 7	\$986,953,000 2,407,201	1,776 3	1,776 3	1,776 3	\$2,077,610,000 3,509,477	
2. Correction for estimation on census form	wt unwt	17,248 44	17,248 44	13,145 34	636,234,000 540,793,879	8,880 15	8,880 15	4,144 7	-17,121,000 -28,922	
3. Sales tax included	wt unwt	144,127 353	16,046 39	11,076 27	-110,795,000 -279,987	89,997 165	13,024 22	7,104 12	-2,314,128,000 -3,910,947	
4. Portion of gross selling value of commission sales, excluded	wt unwt	35,727 89	3,692 9	2,052 5	1,110,699,000 2,707,000	20,728 43	1,776 3	1,184 2	1,964,256,000 3,318,000	
5. Sales of goods shipped from manufacturer directly to customer by order of sample establishment, excluded	wt unwt	74,716 184	411 1	411 1	81,378,000 198,000	59,802 111	0 0	0 0	0 0	
6. Freight, installation, maintenance, repair, alteration, storage, other services receipts excluded	wt unwt	73,912 180	3,693 9	2,462 6	15,177,000 39,334	43,816 82	9,472 16	3,552 6	30,784,000 53,913	
7. Deliveries to same company gas stations excluded (petroleum bulk plants only)	wt unwt	410 1	0 0	0 0	0 0	3,552 6	592 1	0 0	0 0	
8. Excise taxes excluded	wt unwt	21,740 53	0 0	0 0	0 0	20,129 35	5,329 10	2,960 5	970,880,000 1,640,454	
9. Income from sale of land or buildings included	wt unwt	33,647 82	412 1	0 0	0 0	30,794 62	0 0	0 0	0 0	
10. Income from sale of invest- ments or assets included	wt unwt	36,930 90	2,872 7	2,050 5	-9,020,000 -23,758	33,754 67	592 1	0 0	0 0	
11. Interest or dividends included	wt unwt	50,461 123	6,150 15	3,690 9	-31,570,000 -81,210	38,492 77	1,185 3	1 1	-1,472,000 -1,472,000	
12. Income from rental of real estate included	wt unwt	29,948 73	1,641 4	1,231 3	-6,572,000 -16,963	30,793 61	1,184 2	592 1	-592,000 -1,000	
13. Carrying or credit charges included	wt unwt	50,512 123	12,323 30	4,102 10	-29,522,000 -75,399	47,370 90	6,513 12	1,776 3	-1,184,000 -3,039	
14. Discounts, allowances, returns or refunds not deducted from reported figure	wt unwt	123,184 300	10,259 25	5,745 14	-72,646,000 -180,778	89,996 164	12,433 22	6,512 11	-251,008,000 -428,054	
		Total correction for single unit components 2 - 14			wt unwt	\$1,583,363,000 543,080,118	Total corrections for multi- unit components 2 - 14		wt unwt	\$380,415,000 -831,595

Table B.1c Components of Total Correction  
Selected Service - Employment

(Total number of cases: single units 197,233 weighted and 400 unweighted)  
(Total number of cases: multiunits 75,032 weighted and 152 unweighted)

Component (included in reported figure in error or excluded from reported figure in error)		No. of Elig. Cases	Single Unit			Total Corr. For Component (number of employees)	No. of Elig. Cases	Multiunits		Total Corr. For Component (number of employees)
			No. of Cases Req. Corr.	No. of Cases Prov. Book or Reliable Corr.				No. of Cases Req. Corr.	No. of Cases Prov. Book or Reliable Corr.	
1. Correction for item non- response on census form	wt unwt	8,359 17	8,359 17	8,359 17	41,878 85	1,564 4	1,564 4	1,564 4	41,722 642	
2. Corrections for estimation on census form	wt unwt	6,396 13	6,396 13	4,917 10	-5,410 -11	5,732 12	5,732 12	3,126 6	-7,294 -14	
3. Persons on paid leave (sick holiday, vacation) excluded	wt unwt	149,406 303	988 2	0 0	0 0	62,007 127	0 0	0 0	0 0	
4. Persons working at establish- ment but excluded*	wt unwt	183,414 372	3,451 7	2,465 5	2,958 6	69,822 142	3,126 6	2,084 4	5,210 10	
5. Persons working at another establishment of same company but included for sample establishment	wt unwt	5,919 12	987 2	493 1	-493 -1	50,020 100	1 1	1 1	-150 -150	
6. Temporary or part-time workers not included at all	wt unwt	123,290 250	3,452 7	2,466 5	5,427 11	50,023 103	5,731 11	2,084 4	2,605 5	
7. Correction for temporary or part-time workers included by full-time equivalent count	wt unwt	2,467 5	495 1	495 1	493 1	1,042 2	0 1	0 0	7,294 14	
8. Persons employed by establishment but supplied to different company and excluded*	wt unwt	4,924 10	493 1	0 0	0 0	8,859 19	521 1	0 0	0 0	
9. Persons employed by different company, supplied to sample establishment and included*	wt unwt	20,203 41	987 2	0 0	0 0	14,068 28	521 1	0 0	0 0	
10. Corporate officers or executives excluded	wt unwt	84,334 171	5,921 12	5,428 11	9,868 20	32,829 69	1,563 3	1,563 3	2,605 5	
11. Partners or proprietors included	wt unwt	88,712 180	2,961 6	2,961 6	-6,419 -13	10,421 21	521 1	521 1	-521 -1	
12. Persons still paid while temporarily away from job, excluded*	wt unwt	15,777 32	0 0	0 0	0 0	22,930 50	0 0	0 0	0 0	
Total correction for single unit components 2 - 12					wt 6,424 unwt 13	Total corrections for multi- unit components 2 - 12			wt 9,749 unwt -131	

## \* Examples:

- 4 Management trainees counted at headquarters
- 8 or 9 Janitorial service workers, temporary  
secretarial service workers, maintenance or  
repair workers
- 12 Jury duty or military reserve training

Table B.2c Components of Total Correction  
Selected Service - First Quarter Payroll

(Total number of cases: single units 193,283 weighted and 392 unweighted)  
(Total number of cases: multiunits 73,470 weighted and 150 unweighted)

Component (included in reported figure in error or excluded from reported figure in error)		Single Unit				Multiunits			
		No. of Elig. Cases	No. of Cases Req. Corr.	No. of Cases Prov. Book or Reliable Corr.	Total Corr. For Component (dollars of payroll)	No. of Elig. Cases	No. of Cases Req. Corr.	No. of Cases Prov. Book or Reliable Corr.	Total Corr. For Component (dollars of payroll)
1. Correction for non- response on census form	wt	10,824	10,824	10,824	\$410,193,000	1,563	1,563	1,563	\$8,997,000
	unwt	22	22	22	831,574	3	3	3	17,268
2. Correction for estimation on census form	wt	13,320	13,320	10,362	9,866,000	10,942	10,942	5,210	20,397,000
	unwt	27	27	21	20,000	22	22	10	39,150
3. Payroll for persons working at establishment but excluded**	wt	183,414	1,973	986	7,459,000	68,260	1,563	0	0
	unwt	372	4	2	15,130	140	3	0	0
4. Payroll for persons working at another establishment of same company but included**	wt	6,412	494	0	0	53,147	1	0	0
	unwt	13	1	0	0	107	1	0	0
5. Payroll for temporary or part-time workers, excluded**	wt	121,314	1,479	493	173,000	48,461	2,084	521	156,000
	unwt	246	3	1	350	101	4	1	300
6. Payroll for persons employed by establishment but supplied to different company, excluded**	wt	4,431	0	0	0	8,859	521	0	0
	unwt	9	0	0	0	19	1	0	0
7. Payroll for persons employed by different company, supplied to same establishment, included**	wt	17,736	0	0	0	11,984	0	0	0
	unwt	36	0	0	0	24	0	0	0
8. Payroll for corporate officers or executives, excluded**	wt	83,347	2,469	1,482	13,704,000	32,309	2,084	1,563	11,368,000
	unwt	169	5	3	27,749	69	4	3	21,818
9. Payments to partners or proprietors, included**	wt	85,751	1,973	986	-2,613,000	9,900	521	521	-5,210,000
	unwt	174	4	2	-5,300	20	1	1	-10,000
10. Payroll for persons still paid while temporarily away from job, excluded**	wt	17,751	0	0	0	23,972	0	0	0
	unwt	36	0	0	0	52	0	0	0
11. Retirement contributions excluded	wt	14,308	5,426	2,960	6,242,000	9,904	521	0	0
	unwt	29	11	6	12,650	24	1	0	0
12. Employees' portion of group insurance premiums excluded	wt	43,405	8,385	4,933	5,146,000	43,249	1,042	0	0
	unwt	88	17	10	10,430	89	2	0	0
13. Union dues excluded	wt	6,410	986	493	192,000	10,423	521	0	0
	unwt	13	2	1	389	23	1	0	0
14. Savings bonds, savings allotments, excluded	wt	4,936	0	0	0	21,367	0	0	0
	unwt	10	0	0	0	47	0	0	0
15. Charitable contributions excluded	wt	5,426	0	0	0	16,678	521	521	6,295,000
	unwt	11	0	0	0	38	1	1	12,083



Table B.2c Components of Total Correction  
Selected Service - First Quarter Payroll  
Continued

Component (included in reported figure in error or excluded from reported figure in error)		Single Unit				Multiunits			
		No. of Elig. Cases	No. of Cases Req. Corr.	No. of Cases Prov. Book or Reliable Corr.	Total Corr. For Component (dollars of payroll)	No. of Elig. Cases	No. of Cases Req. Corr.	No. of Cases Prov. Book or Reliable Corr.	Total Corr. For Component (dollars of payroll)
16. Garnishments excluded*	wt	7,878	0	0	0	21,369	0	0	0
	unwt	16	0	0	0	49	0	0	0
17. Employees' portion of FICA payments excluded	wt	190,324	1,480	986	\$410,000	69,823	521	521	\$16,988,000
	unwt	386	3	2	830	143	1	1	32,606
18. Withholding taxes excluded	wt	190,322	493	493	1,430,000	69,823	521	521	39,670,000
	unwt	386	1	1	2,900	143	1	1	76,142
19. Tips reported to employer excluded	wt	7,892	493	0	0	6,774	0	0	0
	unwt	16	1	0	0	14	0	0	0
20. Bonuses excluded	wt	85,337	1,480	493	4,930,000	46,376	2,084	0	0
	unwt.	173	3	1	10,000	96	4	0	0
21. Commissions excluded	wt	36,487	1,480	987	2,564,000	25,532	0	0	0
	unwt	74	3	2	5,190	52	0	0	0
22. Compensation in kind excluded*	wt	7,893	1,975	493	22,000	5,211	2,084	1,042	2,058,000
	unwt	16	4	1	45	11	4	2	3,950
23. Dismissed or severance pay excluded	wt	31,058	0	0	0	36,999	0	0	0
	unwt	63	0	0	0	79	0	0	0
24. Vacation pay excluded	wt	145,984	0	0	0	64,092	0	0	0
	unwt	296	0	0	0	132	0	0	0
25. Holiday pay excluded	wt	140,553	0	0	0	62,008	0	0	0
	unwt	285	0	0	0	128	0	0	0
26. Sick leave pay excluded	wt	119,342	0	0	0	57,319	0	0	0
	unwt	242	0	0	0	119	0	0	0
27. Payments from Expense Accounts included	wt	116,842	1,959	1,479	-9,000	51,066	521	0	0
	unwt	237	4	3	-21	106	1	0	0
28. Employers' costs for fringe benefits included	wt	183,425	2,947	987	-299,000	69,302	1,563	1,042	-1,106,000
	unwt	372	6	2	-607	142	3	2	-2,124
29. Retroactive payments paid in 1977 for work performed in 1976, included	wt	188,346	987	987	-2,035,000	66,695	521	0	0
	unwt	382	2	2	-4,127	135	1	0	0
30. Retroactive payments paid in 1978 for work performed in 1977, excluded	wt	187,359	0	0	0	66,695	521	0	0
	unwt	380	0	0	0	135	1	0	0
Total correction for single unit components 2 - 30					wt \$47,182,000 unwt 95,608	Total corrections for multi- units components 2 - 30			wt \$90,616,000 unwt 173,925

## \* Examples:

16. Court awarded child support withheld from pay check.  
22. Holiday turkeys, meals for restaurants workers.  
29, 30 Court awarded back pay.

\*\* correction is for payroll amounts included in or excluded from reported figure, regardless of whether corresponding employees were included in or excluded from reported employment figure, see examples table 7.5a.

Table B.3c. Components of Total Correction  
Selected Service - Annual Payroll

(Total number of cases: single units 200,673 weighted and 407 unweighted)  
(Total number of cases: multiunits 75,554 weighted and 154 unweighted)

Component (included in reported figure in error or excluded from reported figure in error)		Single Unit				Total Corr. For Component (dollars of payroll)	Multiunits			
		No. of Elig. Cases	No. of Cases Req. Corr.	No. of Cases Prov. Book or Reliable Corr.	No. of Elig. Cases		No. of Cases Req. Corr.	No. of Cases Prov. Book or Reliable Corr.	Total Corr. For Component (dollars of payroll)	
1. Correction for item non- response on census form	wt unwt	5,893 12	5,893 12	5,893 12	\$1,539,947,000 3,121,679	1,042 2	1,042 2	1,042 2	36,244,000 69,567	
2. Correction for estimation on census form	wt unwt	17,246 35	17,246 35	15,273 31	-18,950,000 -38,326	10,420 20	10,420 20	6,773 13	22,371,000 42,940	
3. Payroll for persons working at establishment but excluded**	wt unwt	190,804 387	2,959 6	1,972 4	29,935,000 60,720	70,344 144	2,084 4	1,042 2	8,592,000 16,490	
4. Payroll for persons working at another establishment of same company but included**	wt unwt	6,412 13	494 1	0 0	0 0	54,710 110	1 1	0 0	0 0	
5. Payroll for temporary or part-time workers, excluded**	wt unwt	125,756 255	1,973 4	987 2	247,000 500	50,024 104	2,084 4	1,042 2	2,071,000 3,975	
6. Payroll for persons employed by establishment but supplied to different company, excluded**	wt unwt	4,431 9	0 0	0 0	0 0	8,859 19	521 1	0 0	0 0	
7. Payroll for persons employed by different company, supplied to sample establishment, included**	wt unwt	18,229 37	0 0	0 0	0 0	12,505 25	0 0	0 0	0 0	
8. Payroll for corporate officers or executives, excluded**	wt unwt	85,801 174	2,962 6	1,976 4	54,713,000 110,798	33,351 71	2,084 4	1,563 3	45,469,000 87,272	
9. Payments to partners or proprietors, included**	wt unwt	90,687 184	1,973 4	986 2	-9,959,000 -20,200	10,421 21	521 1	521 1	-20,840,000 -40,000	
10. Payroll for persons still paid while temporarily away from job, excluded**	wt unwt	17,751 36	0 0	0 0	0 0	23,972 52	0 0	0 0	0 0	
11. Retirement contributions excluded	wt unwt	14,802 30	6,413 13	5,426 11	70,490,000 142,932	9,904 24	521 1	0 0	0 0	
12. Employees' portion of group insurance premiums excluded	wt unwt	44,392 90	8,385 17	5,919 12	22,512,000 45,648	43,770 90	1,042 2	0 0	0 0	
13. Union dues excluded	wt unwt	6,410 13	986 2	493 1	740,000 1,500	10,423 23	521 1	0 0	0 0	
14. Savings bonds, savings allocments, excluded	wt unwt	4,936 10	0 0	0 0	0 0	21,888 48	0 0	0 0	0 0	

Table B.3c Components of Total Correction  
Selected Service - Annual Payroll  
Continued

Component (included in reported figure in error or excluded from reported figure in error)		Single Unit				Multiunits			
		No. of Elig. Cases	No. of Cases Req. Corr.	No. of Cases Prov. Book or Reliable Corr.	Total Corr. For Component (dollars of payroll)	No. of Elig. Cases	No. of Cases Req. Corr.	No. of Cases Prov. Book or Reliable Corr.	Total Corr. For Component (dollars of payroll)
16. Garnishments excluded*	wt	7,878	0	0	0	21,369	0	0	0
	unwt	16	0	0	0	49	0	0	0
17. Employees' portion of FICA payments excluded	wt	197,714	1,480	986	\$1,146,000	71,907	521	521	\$32,794,000
	unwt	401	3	2	2,325	147	1	1	62,944
18. Withholding taxes excluded	wt	197,218	493	493	5,423,000	71,907	521	521	150,787,000
	unwt	400	1	1	11,000	147	1	1	289,418
19. Tips reported to employer excluded	wt	8,385	493	0	0	6,774	0	0	0
	unwt	17	1	0	0	14	0	0	0
20. Bonuses excluded	wt	86,803	4,937	2,962	5,278,000	46,376	2,084	1,042	1,199,000
	unwt	176	10	6	10,705	96	4	2	2,300
21. Commissions excluded	wt	36,980	1,480	1,480	7,143,000	25,532	0	0	0
	unwt	75	3	3	14,465	52	0	0	0
22. Compensation in kind excluded*	wt	7,893	1,975	493	89,000	5,211	2,084	1,563	8,493,000
	unwt	16	4	1	180	11	4	3	16,300
23. Dismissed or severance pay excluded	wt	31,551	0	0	0	37,520	0	0	0
	unwt	64	0	0	0	80	0	0	0
24. Vacation pay excluded	wt	150,411	493	493	247,000	64,613	0	0	0
	unwt	305	1	1	500	133	0	0	0
25. Holiday pay excluded	wt	144,980	0	0	0	62,529	0	0	0
	unwt	294	0	0	0	129	0	0	0
26. Sick leave pay excluded	wt	123,769	0	0	0	58,361	0	0	0
	unwt	251	0	0	0	121	0	0	0
27. Payments from Expense Accounts included	wt	121,762	2,946	2,466	-694,000	51,587	521	0	0
	unwt	247	6	5	-1,405	107	1	0	0
28. Employers' costs for fringe benefits included	wt	190,815	2,947	493	-1,129,000	71,386	1,563	1,563	-13,265,000
	unwt	387	6	1	-2,291	146	3	3	-25,460
29. Retroactive payments paid in 1977 for work performed in 1976, included	wt	195,736	987	987	-13,410,000	68,779	521	521	-4,168,000
	unwt	397	2	2	-27,201	139	1	1	-8,000
30. Retroactive payments paid in 1978 for work performed in 1977, excluded	wt	194,749	0	0	0	68,779	521	521	22,143,000
	unwt	395	0	0	0	139	1	1	42,500
		Total correction for single unit components 2 - 30		wt	\$153,821,000	Total corrections for multi- unit components 2 - 30		wt	\$257,351,000
				unwt	311,850			unwt	493,952

## \* Examples:

16. Court awarded child support withheld from pay check  
22. Holiday turkeys, meals for restaurants workers  
29, 30 Court awarded back pay

\*\* correction is for payroll amounts included in or excluded from reported figure, regardless of whether corresponding employees were included in or excluded from reported employment figure, see examples table 7.5a

Table B.4c Components of Total Correction  
Selected Service - Receipts

(Total number of cases: single units 198,219 weighted and 402 unweighted)  
(Total number of cases: multiunits 76,074 weighted and 154 unweighted)

Component (included in reported figure in error or excluded from reported figure in error)		Single Unit				Multiunits				
		No. of Elig. Cases	No. of Cases Req. Corr.	No. of Cases Prov. Book or Reliable Corr.	Total Corr. For Component (thousands of dollars)	No. of Elig. Cases	No. of Cases Req. Corr.	No. of Cases Prov. Book or Reliable Corr.	Total Corr. For Component (thousands of dollars)	
1. Correction for item non- Response on census form	wt unwt	5,413 11	5,413 11	5,413 11	\$1,181,342 2,399	3,126 6	3,126 6	3,126 6	\$1,181,505 2,268	
2. Correction for estimation on census form	wt unwt	19,727 40	19,727 40	16,274 33	250,110 507	8,858 18	8,858 18	5,211 11	141,084 318	
3. Sales tax included	wt unwt	147,906 300	26,138 53	18,245 37	-89,171 -179	61,485 125	6,252 12	4,689 9	-32,428 -62	
4. Receipts for the temporary use of establishment's facilities by others excluded	wt unwt	20,228 41	986 2	986 2	1,233 3	11,462 22	1,042 2	0 0	0 0	
5. Sales of merchandise excluded	wt unwt	62,151 126	493 1	493 1	3,811 8	23,970 50	2,084 4	1,042 2	239,335 459	
6. Receipts for work performed by subcontractors excluded	wt unwt	41,901 85	986 2	0 0	0 0	11,466 26	521 1	0 0	0 0	
7. Income from sale of land or buildings included	wt unwt	31,572 64	0 0	0 0	0 0	17,715 35	0 0	0 0	0 0	
8. Income from sale of invest- ments or assets included	wt unwt	37,488 76	2,466 5	2,466 5	-55,751 -113	18,237 37	0 0	0 0	0 0	
9. Interest or dividends included	wt unwt	61,152 124	17,270 35	13,322 27	-12,402 -25	23,970 50	3,126 6	2,084 4	-12,446 -24	
10. Income from rental of real estate included	wt unwt	40,459 82	6,913 14	3,951 8	-14,546 -30	17,196 36	1,042 2	1,042 2	-57,675 -111	
11. Carrying or credit charges included	wt unwt	35,009 71	3,948 8	2,467 5	-1,767 -3	16,154 34	1,563 3	521 1	-27,092 -52	
12. Commissions from vending machines operated by a different company, included	wt unwt	39,461 80	13,331 27	5,926 12	-19,132 -39	18,238 38	4,689 9	3,126 6	-7,535 -15	
13. Rent from operators of leased department or concessions, located in sample establishment, included	wt unwt	19,235 39	2,466 5	1,480 3	-4,395 -9	10,421 21	1,564 4	522 2	-7,910 -4,790	
14. Receipts of leased depart- ments or concessions located in sample establishment, included	wt unwt	17,264 35	494 1	494 1	-3,211 -7	10,942 22	1,042 2	0 0	0 0	
15. Discounts, allowances, refunds, returns not de- ducted from reported figure	wt unwt	82,851 168	7,400 19	3,454 7	-49,800 -101	40,122 82	3,126 6	2,084 4	-6,310 -12	
		Total correction for single unit components 2 - 15			wt unwt	\$4,979 12	Total corrections for multi- unit components 2 - 15		wt unwt	\$229,023 -4,289

Table B.1d Components of Total Correction  
Manufactures - Employment

(Total number of cases: single units 81,195 weighted and 312 unweighted)  
(Total number of cases: multiunits 46,414 weighted and 270 unweighted)

Component (included in reported figure in error or excluded from reported figure in error)		Single Unit				Multiunits				
		No. of Elig. Cases	No. of Cases Req. Corr.	No. of Cases Prov. Book or Reliable Corr.	Total Corr. For Component (number of employees)	No. of Elig. Cases	No. of Cases Req. Corr.	No. of Cases Prov. Book or Reliable Corr.	Total Corr. For Component (number of employees)	
1. Correction for item non- response on census form	wt unwt	3,130 12	3,130 12	3,130 12	16,417 63	621 3	621 3	621 3	29,601 143	
2. Correction for estimation on census form	wt unwt	2,836 11	2,836 11	2,053 8	-2,120 -9	1,665 17	1,665 17	623 5	-40,490 -21,538	
3. Persons on paid leave (sick, holiday, vacation) excluded	wt unwt	71,620 275	0 0	0 0	0 0	45,172 264	2,278 12	621 3	8,280 40	
4. Persons working at establishment but excluded*	wt unwt	80,935 311	2,088 8	1,827 7	3,654 14	45,793 267	1,869 15	1,452 10	12,584 636	
5. Persons working at another establishment of same company but included	wt unwt	1,792 7	0 0	0 0	0 0	44,756 260	3,115 25	2,902 18	-99,673 -1,617	
6. Persons employed by establishment but supplied to different company and excluded*	wt unwt	0 0	0 0	0 0	0 0	625 7	414 2	0 0	0 0	
7. Persons employed by different company supplied to sample establishment and included*	wt unwt	227 1	0 0	0 0	0 0	8,091 57	207 1	0 0	0 0	
8. Temporary or part time workers not included at all	wt unwt	46,315 178	2,087 8	1,826 7	6,785 26	26,738 164	2,901 17	621 3	3,933 19	
9. Correction for temporary or part-time workers included by full-time equivalent count	wt unwt	784 3	784 3	784 3	523 2	621 3	621 3	621 3	2,898 14	
10. Persons still paid while temporarily away from job, excluded*	wt unwt	12,447 48	0 0	0 0	0 0	28,193 177	209 3	1 1	325 325	
11. Agricultural workers included	wt unwt	3,387 13	521 2	261 1	-261 -1	2,694 16	828 4	621 3	-3,105 -15	
12. Fishermen included	wt unwt	3,127 12	261 1	261 1	-261 -1	1,865 11	0 0	0 0	0 0	
13. Members of the armed forces stationed at establishment, included	wt unwt	3,388 13	261 1	261 1	-261 -1	3,527 25	829 5	207 1	-414 -2	
14. Retired persons on pension from company included	wt unwt	7,820 30	2,869 11	2,608 10	-3,391 -13	6,840 42	1,039 9	829 5	-3,313 -17	
15. Partners or proprietors included	wt unwt	6,189 24	1,563 6	1,563 6	-2,605 -10	414 2	0 0	0 0	0 0	
		Total correction for single unit components 2 - 15			wt unwt	2,063 7	Total corrections for multi- unit components 2 - 15		wt unwt	-118,975 -22,155

\* Examples:

- 4 management trainees counted at headquarters
- 6 or 7 janitorial service workers, temporary secretarial service workers, maintenance or repair workers
- 10 jury duty or military reserve training

Table B.3d Components of Total Correction  
Manufactures - Annual Payroll

(Total number of cases: single units 80,674 weighted and 310 unweighted)  
(Total number of cases: multiunits 45,379 weighted and 265 unweighted)

Component (included in reported figure in error or excluded from reported figure in error)		Single Unit				Multiunits			
		No. of Elig. Cases	No. of Cases Req. Corr.	No. of Cases Prov. Book or Reliable Corr.	Total Corr. For Component (dollars of payroll)	No. of Elig. Cases	No. of Cases Req. Corr.	No. of Cases Prov. Book or Reliable Corr.	Total Corr. For Component (dollars of payroll)
1. Correction for item non- response on census form	wt unwt	1,563 6	1,563 6	1,563 6	\$101,364,760 389,501	0 0	0 0	0 0	0 0
2. Correction for estimation on census form	wt unwt	4,964 19	4,964 19	3,912 15	589,933,171 2,260,310	3,935 21	3,935 21	2,277 11	\$266,631,318 1,288,074
3. Payroll for persons working at establishment but excluded**	wt unwt	79,892 307	1,565 6	1,304 5	22,000,388 84,308	44,344 260	1,867 13	623 5	23,219,843 1,589,843
4. Payroll for persons working at another establishment of same company but included**	wt unwt	1,792 7	0 0	0 0	0 0	43,308 254	2,701 23	2,486 14	-844,367,539 -20,135,377
5. Payroll for persons employed by establishment but supplied to an different company, excluded**	wt unwt	0 0	0 0	0 0	0 0	625 7	207 1	0 0	0 0
6. Payroll for persons employed by different company, supplied to same establishment, included**	wt unwt	4,227 1	0 0	0 0	0 0	7,055 51	415 3	0 0	0 0
7. Payroll for temporary or part-time workers excluded**	wt unwt	46,280 178	261 1	0 0	0 0	24,254 152	1,036 6	207 1	2,070,000 10,000
8. Payroll for persons still paid while temporarily away from job, excluded**	wt unwt	11,405 44	0 0	0 0	0 0	26,536 168	416 4	208 2	20,880,457 249,351
9. Payroll for agricultural workers included**	wt unwt	14,344 55	0 0	0 0	0 0	14,090 82	621 3	414 2	-45,315,198 -218,914
10. Payroll for fishermen included**	wt unwt	14,344 55	0 0	0 0	0 0	14,090 82	0 0	0 0	0 0
11. Payroll for members of the armed forces stationed at establishment, included**	wt unwt	14,344 55	0 0	0 0	0 0	14,090 82	622 4	621 3	-7,806,798 -37,714
12. Payments to retired persons on pension from company included**	wt unwt	14,344 55	2,086 8	1,564 6	-18,033,614 -69,117	14,089 81	1,038 8	828 4	-53,998,020 -260,860
13. Payments to partners and proprietors included**	wt unwt	5,927 23	1,040 4	780 3	-9,573,200 -36,820	207 1	0 0	0 0	0 0
14. Retirement contributions excluded	wt unwt	11,934 46	2,085 8	1,303 5	46,162,328 177,459	14,930 98	2,485 13	1,035 5	12,195,198 58,914
15. Employees' portion of group insurance premiums excluded	wt unwt	32,856 126	2,085 8	1,564 6	11,522,188 44,162	31,086 186	2,485 13	1,242 6	23,183,379 111,997

Table B.3d Components of Total Correction  
Manufactures - Annual Payroll  
Continued

Component (included in reported figure in error or excluded from reported figure in error)		Single Unit				Multiunits					
		No. of Elig. Cases	No. of Cases Req. Corr.	No. of Cases Prov. Book or Reliable Corr.	Total Corr. For Component (thousands of dollars)	No. of Elig. Cases	No. of Cases Req. Corr.	No. of Cases Prov. Book or Reliable Corr.	Total Corr. For Component (thousands of dollars)		
16. Union dues excluded	wt	14,054	1,041	521	\$322,860	18,252	207	207	\$51,750		
	unwt	54	4	2	1,239	124	1	1	250		
17. Savings bonds, savings allotments excluded	wt	6,520	260	260	111,800	25,505	207	0	0		
	unwt	25	1	1	430	167	1	0	0		
18. Employees' portion of FICA payments excluded	wt	79,110	520	260	1,772,940	44,965	1,243	414	24,219,000		
	unwt	304	2	1	6,819	263	7	2	117,000		
19. Withholding taxes excluded	wt	79,110	520	260	5,602,480	45,172	1,036	0	0		
	unwt	304	2	1	21,548	264	6	0	0		
20. Bonuses excluded	wt	56,454	1,304	782	10,289,500	31,292	1,244	621	12,322,503		
	unwt	217	5	3	39,500	186	8	3	59,529		
21. Commissions excluded	wt	20,538	1,564	782	6,762,571	14,498	828	414	7,887,528		
	unwt	79	6	3	25,911	78	4	2	38,104		
22. Compensation in kind excluded*	wt	2,349	1,044	522	2,349,000	4,973	1,244	414	3,415,500		
	unwt	9	4	2	9,000	29	8	2	16,500		
23. Dismissal or severance pay excluded	wt	23,665	261	0	0	27,158	210	0	0		
	unwt	91	1	0	0	172	4	0	0		
24. Vacation pay excluded	wt	73,706	0	0	0	45,172	1,865	415	1,154,613,226		
	unwt	283	0	0	0	264	11	3	13,495,384		
25. Holiday pay excluded	wt	72,141	0	0	0	45,172	1,658	208	558,827,457		
	unwt	277	0	0	0	264	10	2	6,651,667		
26. Sick leave pay excluded	wt	52,060	261	0	0	38,133	1,451	415	200,504,375		
	unwt	200	1	0	0	229	9	3	2,340,409		
27. Annuities or supplemental labor costs included	wt	79,113	261	0	0	43,722	828	207	-522,882,000		
	unwt	304	1	0	0	256	4	1	-2,526,000		
28. Retroactive payments included or excluded in error*	wt	0	0	0	0	0	0	0	0		
	unwt	0	0	0	0	0	0	0	0		
		Total correction for single unit components 2 - 28			wt	\$669,222,412	Total corrections for multi- unit components 2 - 28			wt	\$835,651,979
					unwt	\$2,564,749				unwt	\$2,848,157

## \* Examples:

22 holiday turkeys, subsidized meals for employees  
28 court awarded back pay, component is usually  
amount paid in 1977 for work performed in 1976,  
or paid in 1978 for work performed in 1977

\*\* correction is for payroll amounts included in or  
excluded from reported figure, regardless of whether  
corresponding employees were included in or excluded  
from reported figure, see examples table 7.5d

**Table B.4d Components of Total Correction  
Manufactures - Value of Products Shipped**

(Total number of cases: single units 80,383 wt and 309 unweighted)  
(Total number of cases: multiunits 46,827 wt and 271 unweighted)

Component (included in reported figure in error or excluded from reported figure in error)		Single Unit				Multiunits					
		No. of Elig. Cases	No. of Cases Req. Corr.	No. of Cases Prov. Book or Reliable Corr.	Total Corr. For Component (thousands of dollars)	No. of Elig. Cases	No. of Cases Req. Corr.	No. of Cases Prov. Book or Reliable Corr.	Total Corr. For Component (thousands of dollars)		
1. Correction for item non- response on census form	wt unwt	8,311 32	8,311 32	8,311 32	\$13,763,804 54,088	1,035 5	1,035 5	1,035 5	\$21,165,595 102,250		
2. Correction for estimation on census form	wt unwt	5,184 20	5,184 20	4,402 17	663,149 2,447	5,178 28	5,178 28	3,105 15	29,203,955 141,083		
3. Freight charges included	wt unwt	75,984 292	8,830 34	4,693 18	-243,446 -934	42,892 250	8,913 55	2,484 12	-582,395 -2,814		
4. Value of discounts not deducted	wt unwt	46,610 179	6,257 24	4,432 17	-291,228 -1,116	32,114 184	4,559 27	3,105 15	-1,229,682 -5,941		
5. Excise taxes included	wt unwt	12,485 48	261 1	261 1	-293 -1	10,161 67	0 0	0 0	0 0		
6. Value of returns or allowances not deducted	wt unwt	48,211 185	2,870 11	1,566 6	-70,022 -269	34,397 201	1,245 9	414 2	-6,092 -30		
7. Shipment to company warehouses excluded	wt unwt	49,114 189	0 0	0 0	0 0	42,682 246	2,485 13	1,242 6	4,119,716 19,903		
8. Shipments to other domestic plants of the company for further processing, excluded	wt unwt	48,627 187	0 0	0 0	0 0	34,818 210	3,108 18	622 4	596,725 12,097		
9. Shipments to company sales branches excluded	wt unwt	48,366 186	0 0	0 0	0 0	30,663 175	1,036 6	414 2	2,177,226 10,518		
10. Shipments directly to customers excluded	wt unwt	58,978 265	0 0	0 0	0 0	42,891 249	414 2	0 0	0 0		
11. Value of goods produced by another firm using materials owned by sample establishment excluded	wt unwt	77,775 299	260 1	0 0	0 0	40,611 235	830 6	207 1	20,700 100		
		Total correction for single unit components 2 - 11				wt unwt	\$58,160 127	Total corrections for multi- unit components 2 - 11		wt unwt	\$34,300,153 174,916



FORM EC-CB-6(MU) (12-18-78)  U.S. DEPARTMENT OF COMMERCE BUREAU OF THE CENSUS  <b>CONTENT EVALUATION</b> <b>1977 ECONOMIC CENSUS DATA</b> Wholesale (MU)  CENSUS USE ONLY		NOTICE - Your report to the Census Bureau is confidential by law (title 13, U.S. Code). It may be seen only by sworn Census employees and may be used only for statistical purposes.	
		Census File Number	El Number
This interview is being conducted to evaluate the concepts and procedures the Census Bureau uses when collecting data for the Economic Censuses. This establishment is part of a nationwide survey of establishments engaged in manufacturing and mineral industries, construction, distributive trades, and service industries. We are collecting information on how various Census items were completed, so that we can determine if we are asking for information in the most appropriate manner, and if we are using terms and definitions which are understandable from the company's point of view. We will be focusing our questions on several Census items concerning employment, payroll, and receipts. The results of this survey will be used to improve our procedures for the next Economic Censuses. As with the Census data, all of your answers will be treated confidentially.			
<b>INFORMATION OBTAINED IN CONVERSATION</b>			
1. Where is this establishment in the company organization?			
2. What route do the Census forms take through the company?			
3. Who fills out or compiles which items, what types of jobs do these people do where?		Name of person furnishing information	Job or title
a. Employment . . . . .			Location (HQ, establishment, etc.)
b. Payroll . . . . .			
c. Receipts . . . . .			
d. Other items . . . . .			
4. Does headquarters provide extra instructions with the Census form; can we obtain a copy?			
5. Does anyone here or at headquarters review and possibly change the forms prior to returning them to the Census Bureau?			
6. Any questions asked by respondent which require response by Washington, D.C. staff?			
7. Were records readily available for the interview? What kinds of records were not available; why weren't they available?			
8. Any comments, suggestions made by respondent?			

1. Is this a -	a. <input type="checkbox"/> Corporation                      b. <input type="checkbox"/> Unincorporated concern								
2. What is the ending date of this company's fiscal year?	Date - Month and day								
3a. The numbers to which we will refer were reported on the 1977 Census of Distributive Trades form _____, for the establishment -	Name of establishment								
	Located at -								
	b. For Census purposes, this establishment has been classified as -								
	1 <input type="checkbox"/> Yes - Go to 4 2 <input type="checkbox"/> No - Ask d								
c. Is this correct? .....	1 <input type="checkbox"/> Yes - Go to 4 2 <input type="checkbox"/> No - Ask d								
d. What were the primary items sold at this establishment? .....									
4a. Did this location include administrative offices which served other establishments of the company? .....	1 <input type="checkbox"/> Yes - Ask b 2 <input type="checkbox"/> No - Skip to 6								
b. Were the administrative offices treated as an establishment separate from the sales establishment for Census purposes	1 <input type="checkbox"/> Yes - Skip to 6 2 <input type="checkbox"/> No - Go to 5								
5a. How many employees of this establishment were engaged in administrative or support activities for overall operations of the company for the pay period including the 12th of ...?	<table border="1" style="width:100%; text-align: center;"> <tr> <td>March</td> <td>May</td> <td>August</td> <td>November</td> </tr> <tr> <td> </td> <td> </td> <td> </td> <td> </td> </tr> </table>	March	May	August	November				
	March	May	August	November					
b. How much of the first quarter payroll was for these employees? .....	\$ _____								
c. How much of the annual payroll was for these employees? .....	\$ _____								
ASK <input type="checkbox"/> 6                      OR <input type="checkbox"/> 7									
6a. On the 1977 Census of Distributive Trades form _____, item 6b, the numbers of employees at this establishment were reported as follows:									
For the pay period including the 12th day of ...?	Reported figures	Ask for each month Were these numbers book figures or estimates? (c)	Ask for each estimate marked in column (c) How many employees were there during the pay period including the 12th of ...?						
(a)	(b)	Book    Estimate	(d)						
March									
May									
August									
November									
If all 4 months were book figures, skip to 8.									
b. Can you tell me how you estimated the original figures?		7a. On the 1977 Census of Distributive Trades form _____, item 6b, employment, was not filled in. Can you tell me why?							
		b. What was the number of employees during the pay period including the 12th of ...?							
		March							
		May							
		August							
		November							

(Skip to 8)

8. What kinds of records did you use to obtain the employment figures (such as form 941, other government forms, internal company records)?

---

ASK  9                      OR                       10

9a. In item 6a, line 2, the first quarter payroll for this establishment was reported as -

\$ \_\_\_\_\_

b. Is this a book figure or an estimate?

1  Book - Skip to 11

2  Estimate - Ask c and d

c. Can you tell me how you estimated this figure?

\_\_\_\_\_

d. What was the book figure for the first quarter payroll for this establishment?

\$ \_\_\_\_\_ - Skip to 11

10a. In item 6a, the first quarter payroll figure was not reported. Can you tell me why?

\_\_\_\_\_

b. What was the 1977 first quarter payroll for this establishment?

\$ \_\_\_\_\_

---

ASK  11                      OR                       12

11a. Total annual payroll, item 6a, line 1, was reported as -

\$ \_\_\_\_\_

b. Is this a book figure or an estimate?

1  Book - Skip to 13

2  Estimate - Ask c and d

c. How did you estimate this figure?

\_\_\_\_\_

d. What was the book figure for the 1977 annual payroll for this establishment?

\$ \_\_\_\_\_ - Skip to 13

12a. Total annual payroll, item 6a, line 1, was not reported. Can you tell me why?

\_\_\_\_\_

b. What was the 1977 annual payroll for this establishment?

\$ \_\_\_\_\_

---

13a. Did the numbers of employees include persons on paid sick leave, paid holidays, and paid vacations? . . . . .

1  Yes - Go to 14

2  No - Ask b

3  Not sure, don't know - Go to 14

4  NA - Go to 14

	March	May	August	November
b. How many employees were on paid sick, holiday, or vacation leave but were not included in the employment figure for the pay period including the 12th of . . . ?				

---

14a. Were there any employees, of this company, who worked at this establishment but who were not included in the employment figures? . . . . .

1  Yes - Ask b

2  No, not sure - Go to 15

	March	May	August	November
b. How many of these employees were there during the pay period including the 12th of . . . ?				

---

Comments







<p><b>41a. Does the receipts figure for this establishment include any amounts received for each of these items?</b></p>	<p>Ask for each "Yes" marked in question a. b. How much was included in the receipts figure for . . . ?</p>								
	<table border="1" style="margin: auto;"> <tr> <td style="width: 10%; text-align: center;">1</td> <td style="width: 10%; text-align: center;">2</td> <td style="width: 10%; text-align: center;">3</td> <td style="width: 70%;"></td> </tr> <tr> <td style="text-align: center;">Yes</td> <td style="text-align: center;">No</td> <td style="text-align: center;">NA/ other</td> <td style="text-align: center;">Amount received</td> </tr> </table>	1	2	3		Yes	No	NA/ other	Amount received
1	2	3							
Yes	No	NA/ other	Amount received						
(1) Sale of land and buildings	\$ _____								
(2) Sale of investments and other assets	\$ _____								
(3) Interest or dividends earned	\$ _____								
(4) Rental of real estate	\$ _____								
(5) Carrying or other credit charges	\$ _____								
<p><b>42a. Does the reported sales and operating receipts figure include receipts from any sources not already mentioned? . . . . .</b></p> <p>b. What were these sources? . . . . .</p>	<p>1 <input type="checkbox"/> Yes - Ask b 2 <input type="checkbox"/> No, NA - Go to 43</p>								
<p><b>43a. Is the receipts figure net of any discounts, allowances, returns, or refunds? . . . . .</b></p> <p>b. During 1977, how much did this establishment allow for discounts, allowances returns, or refunds, that was not deducted from the reported sales figures? . . . . .</p>	<p>1 <input type="checkbox"/> Yes - Go to 44 2 <input type="checkbox"/> No or some - Ask b</p> <p style="text-align: right;">3 <input type="checkbox"/> NA - Go to 44</p> <p style="text-align: right;">\$ _____</p>								
<p><b>44a. Were receipts reported on the Census form on a cash received or billing or accrual basis? . . . . .</b></p> <p>b. What reporting method was used? . . . . .</p>	<p>1 <input type="checkbox"/> Cash received 2 <input type="checkbox"/> Billing or accrual basis</p> <p style="text-align: right;">3 <input type="checkbox"/> Other - Ask b</p>								
<p><b>45a. Do the figures for employment, payroll, and receipts as reported on the _____ form, include amounts for any other establishment of this company? . . . . .</b></p> <p>b. What other locations or establishments were included on the Census form and what were their activities? If all establishments have same activity, column (c), END INTERVIEW; otherwise go to 46.</p>	<p>1 <input type="checkbox"/> Yes - Ask b 2 <input type="checkbox"/> No - END INTERVIEW</p>								
Name of establishment (a)	Location (Number, street, city, State, ZIP code) (b)	Activities (Mark (X) "Same" and/or list other activities) (c)							
		<input type="checkbox"/> Same							
		<input type="checkbox"/> Same							
		<input type="checkbox"/> Same							
		<input type="checkbox"/> Same							
		<input type="checkbox"/> Same							

46. Last, we need to know how much of the employment, payroll, and receipts figures pertained to this establishment. For each of the following items, how much of the reported figure was for this establishment alone?

Item on Census form (Skip items with "0" reported figures.)	Month (a)	Reported figures (b)	Number or amount for this establishment (c)
• Item 6b Number of employees for the pay period including the 12th of . . . ?	March		
	May		
	August		
	November		
• Item 6a Line 1 - Total annual payroll		\$	\$
Line 2 - First quarter payroll		\$	\$
• Item 5a Sales and other operating receipts		\$	\$

Comments