

ACS Multi-Year Estimates: Impact on State and Federal Programs

Warren Brown

Cornell University

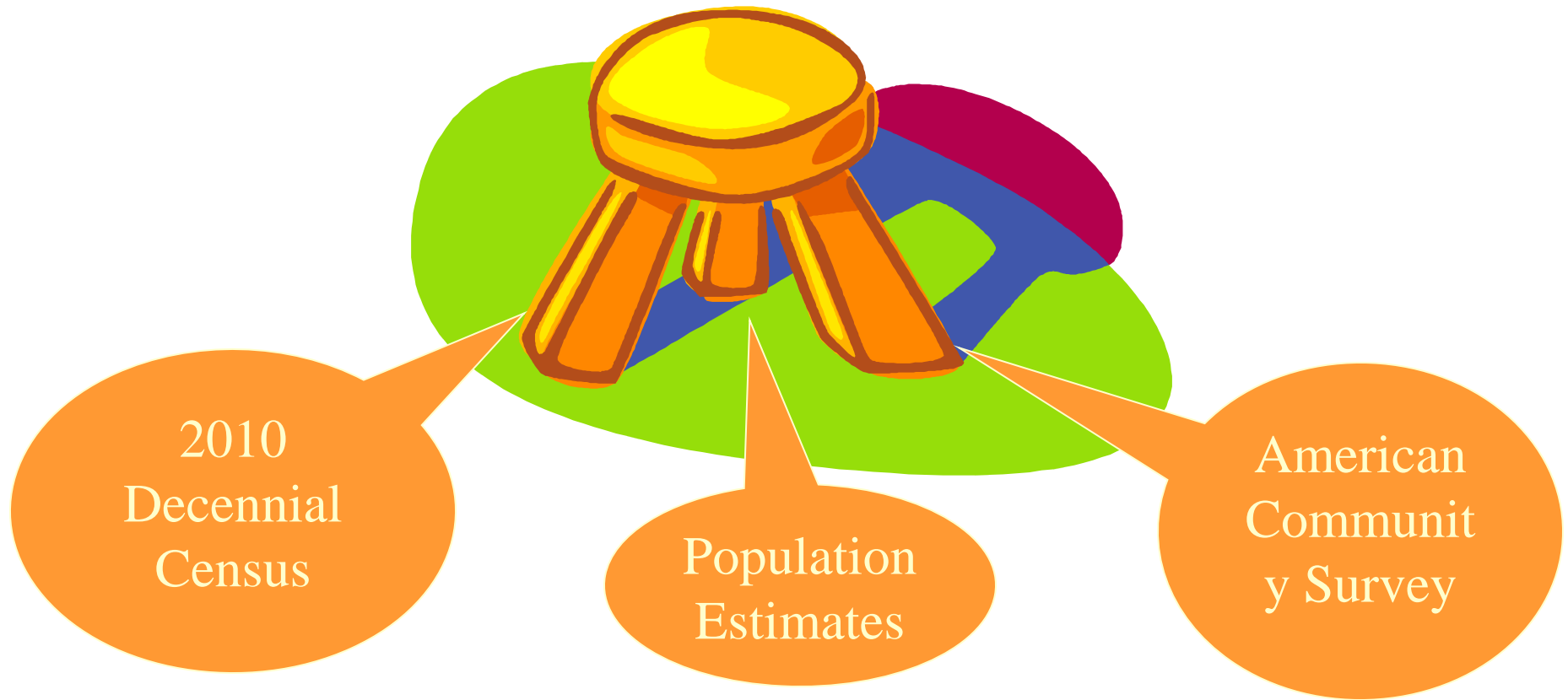
Robert Scardamalia

New York State Dept of Economic Development

Multiyear Estimates Study Research Meeting

November 15, 2007

-Re-Engineered Census



Objective of Project

- Guidelines for state legislatures and executive agencies who currently use decennial census “long form” data

Statistical Policy Working Paper #1

Report on Statistics for Allocation of Federal Funds

- Federal Committee on Statistical Methodology – OMB
- “impact of errors in the data on the actual allocation of funds”
- “provisions be made for an active, continuous interface between legislative program drafters and the statistical community”

Federal Statistics used to assess:

- Need
- Capability
- Effort

New York State Empire Zones

- Need: Areas of high unemployment and low income
- Program: Tax breaks for employers locating in zone
- Use Census data for Census Tracts

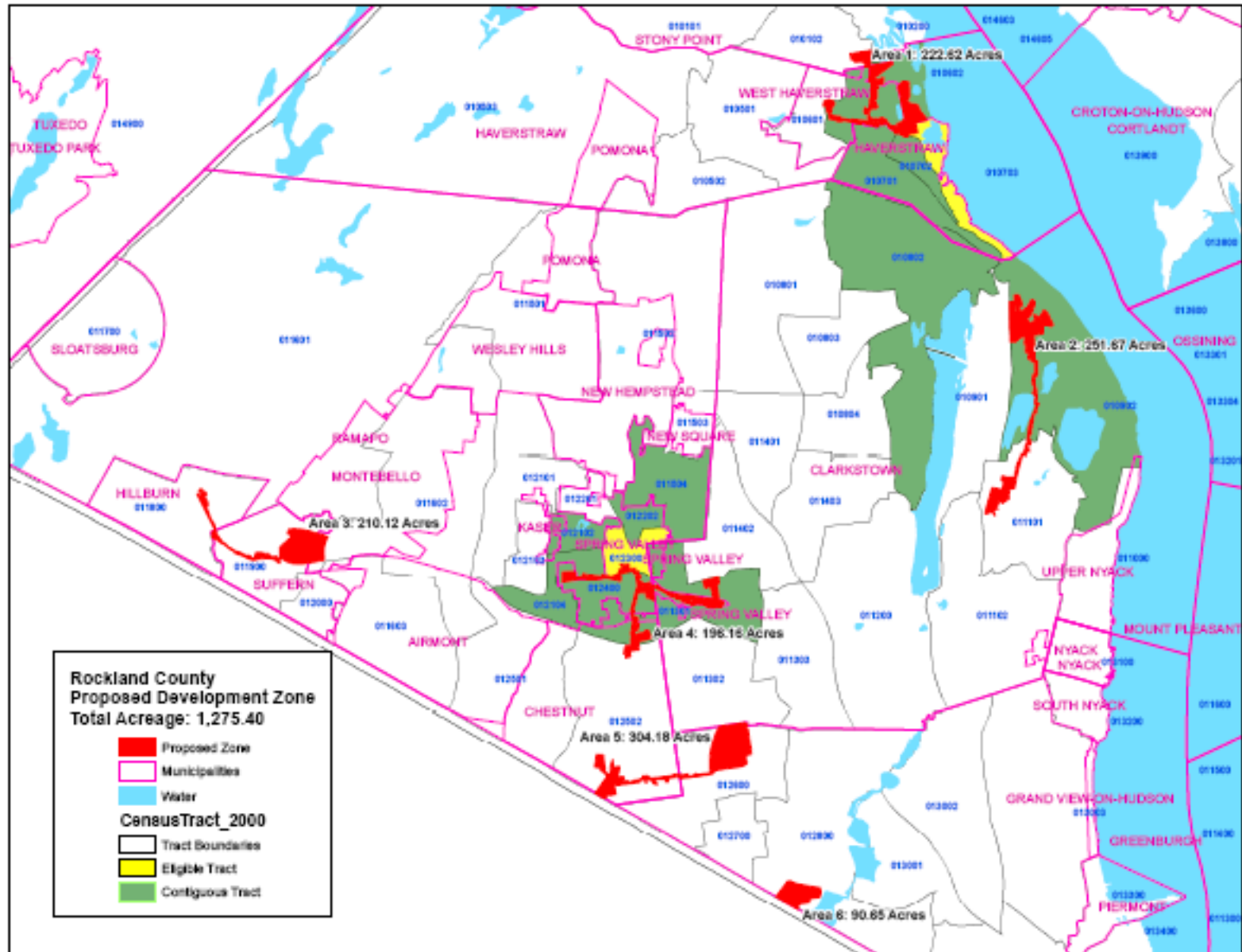
Empire Zones Eligibility Thresholds

- Population Size: 2,000
- Poverty: 20%
- Unemployment: 125% of State 8.867 in 2000

Non-Metropolitan Areas

- Public Assistance: 14% of households

Rockland County Empire Zone



Rockland County Eligibility Test

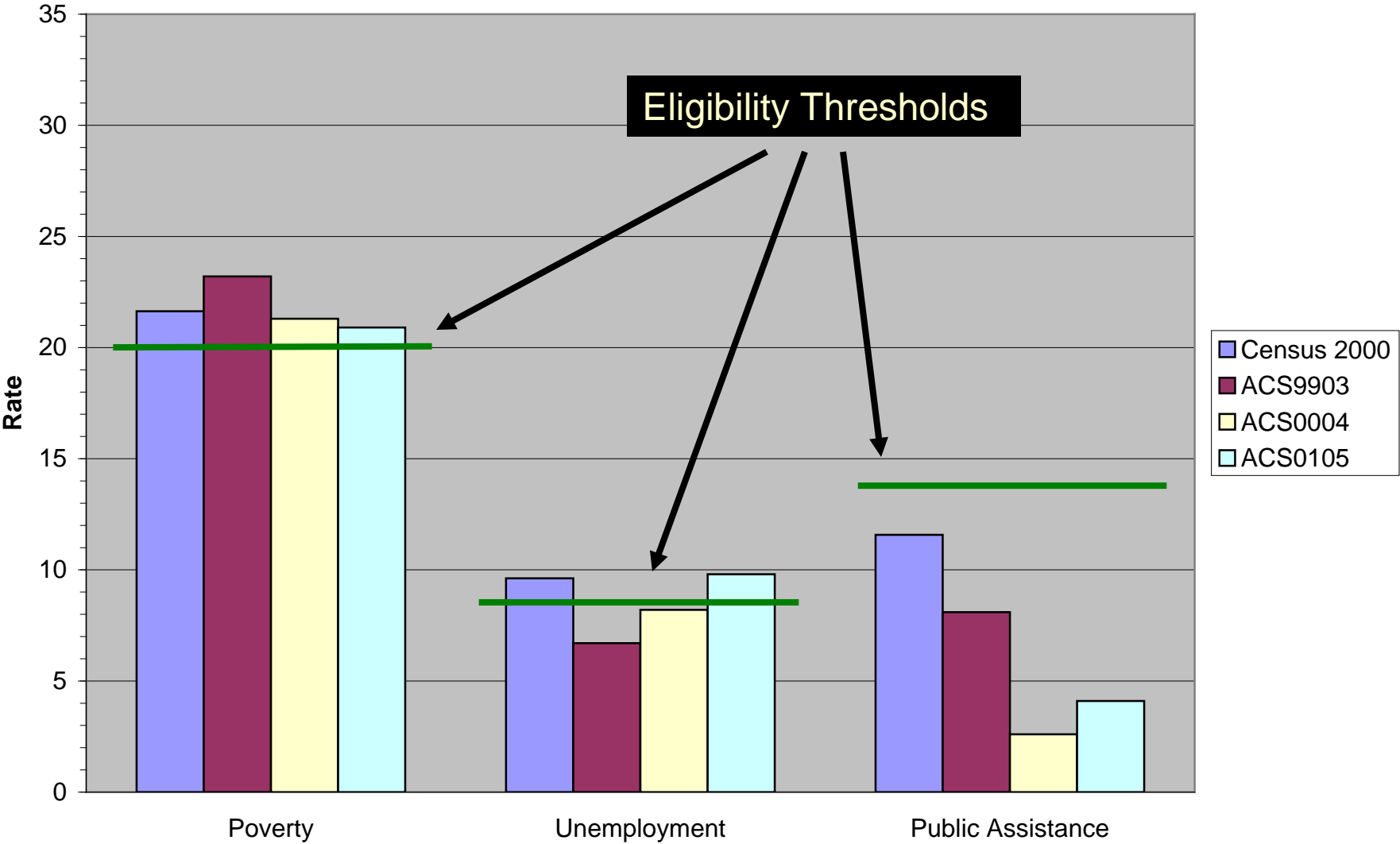
Empire State Development Highly Distressed Areas According to Various Program Legislation Based on 2000 Census Data

Area Name	Total Population	Poverty Rate	Unemploy. Rate	PA Income Rate	Empire Zones S956a	Zone Equival. Areas	Environ. Zones	Linked Deposit Part A	IDA Part A
Rockland County	266,753	9.51	3.71	1.83					
Census Tract 101.01	4,908	2.37	2.84	2.16					
Census Tract 101.02	4,707	3.40	3.11	0.00					
Census Tract 102	4,629	5.48	3.58	0.25					
Census Tract 105.01	4,807	4.90	4.17	0.88					
Census Tract 105.02	6,538	8.03	2.70	0.78					
Census Tract 105.03	2,052	2.93	3.07	0.00					
Census Tract 106.01	3,888	5.07	6.55	2.63					
Census Tract 106.02	8,411	13.90	3.95	4.41					
Census Tract 107.01	3,537	12.75	3.78	4.36					
Census Tract 107.02	3,703	16.87	8.67	5.99					
Census Tract 107.03	2,787	21.64	8.62	11.57	Y	Y	Y	Y	Y
Census Tract 108.01	4,274	2.71	1.16	0.43					
Census Tract 108.02	5,662	1.19	1.81	0.00					
Census Tract 108.03	5,736	4.15	2.12	1.57					
Census Tract 108.04	4,104	2.47	4.07	0.00					
Census Tract 109.01	4,794	1.00	2.84	0.00					
Census Tract 109.02	4,001	5.56	3.49	2.02					
Census Tract 110	1,863	3.36	5.13	0.55					
Census Tract 111.01	6,066	2.71	2.93	0.00					
Census Tract 111.02	5,723	4.53	3.31	1.24					
Census Tract 112	6,386	1.77	1.46	0.00					
Census Tract 113.01	5,351	15.02	8.44	3.12					
Census Tract 113.02	5,348	4.41	2.83	0.80					
Census Tract 113.03	5,339	2.93	4.00	0.33					
Census Tract 114.01	4,221	6.33	2.63	0.45					

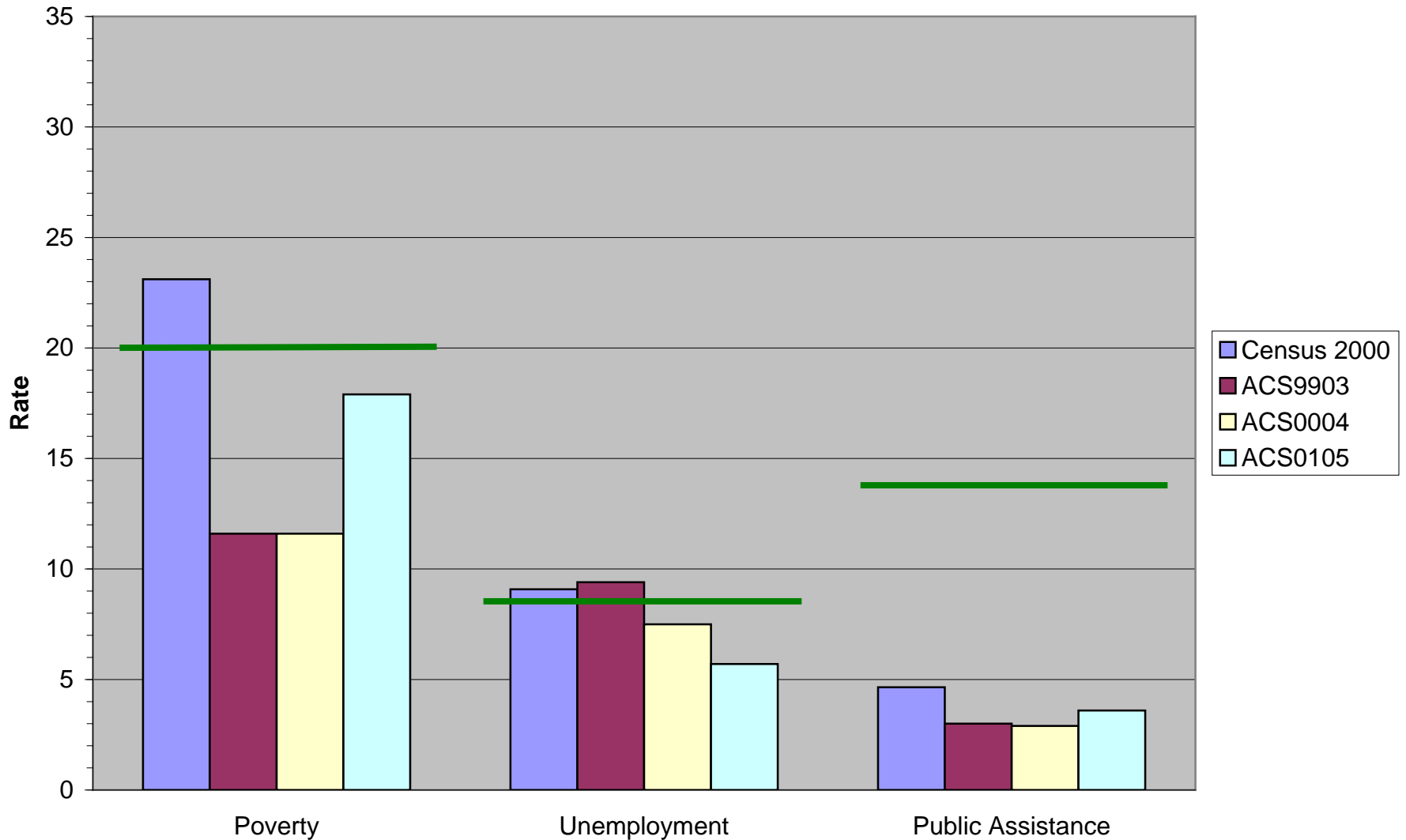
Changes to Data Sources

	<u>Long Form</u>	<u>ACS</u>
Source:	Sample Survey	Sample Survey
Reference Period:	April 1, 2000	60 months of returns
Frequency:	Once a decade	Annual
Sampling Error:	Ignored	Clearly Presented

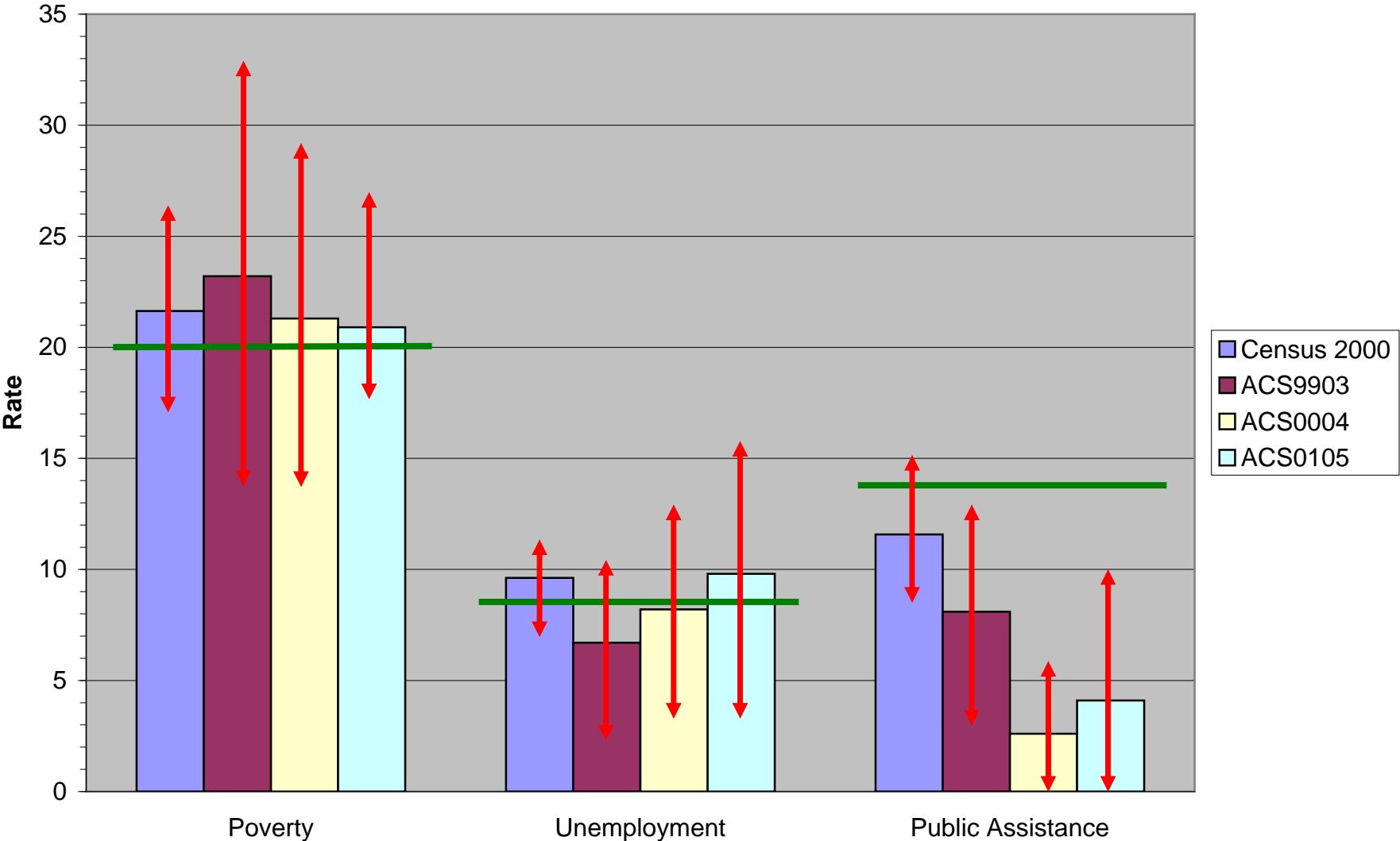
Empire Zones Program for Rockland County, NY: Tract 107.03



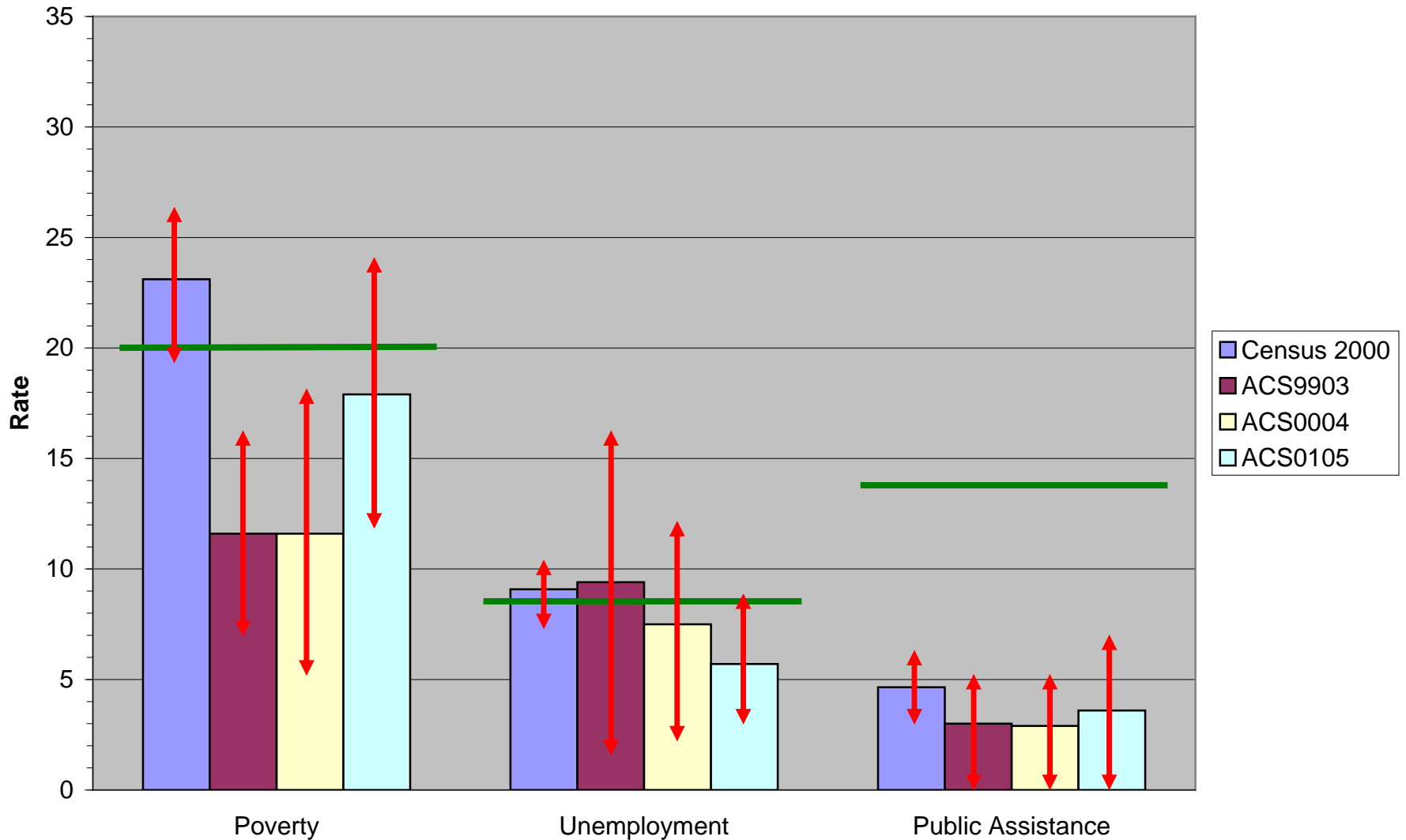
Empire Zones Program for Rockland County, NY: Tract 123



Empire Zones Program for Rockland County, NY: Tract 107.03



Empire Zones Program for Rockland County, NY: Tract 123



“minimize the effects of data errors”

- Dampen fluctuations by using moving average
 - CETA and WIA
- Hold harmless provisions
 - CDBG