

2026 Goldschmidt Media Conference: *An Overview of the Longitudinal Employer- Household Dynamics (LEHD) Data Products*

April 14th, 2026

Earlene Dowell

Outreach Specialist

U.S. Census Bureau, Data User and Trade Outreach Branch



Meet Your Presenter

Earlene Dowell:

- Supervisory Program Analyst in the Data User and Trade Outreach Branch
- 16+ years experience at Census
- Leads and coordinates numerous outreach activities – webinars, presentations, and articles
- Holds a master's degree in communication, a bachelor's degree in public relations, and a master's certificate in Business Analysis from Duke University





LEHD Data Products

Data Tools	Data Sets	Highlights	Frequency
QWI Explorer	Quarterly Workforce Indicators (QWI)	Compare and rank labor force indicators across time, geography, and/or firm and worker characteristics	Quarterly
J2J Explorer	Job-to-Job Flows (J2J)	Analyze statistics on job flows by tracing worker movements through industries, geography, and to/from employment	Quarterly
OnTheMap	LEHD Origin-Destination Employment Statistics (LODES)	Reports demographic characteristics and commute patterns of jobs covering 50 states plus D.C.	Annual



LEHD Data Products (Continued)

Data Tool	Data Set	Highlights	Frequency
OnTheMap for Emergency Management	LEHD Origin-Destination Employment Statistics (LODES), American Community Survey (ACS), Decennial	Shows potential impact on jobs and population during a natural disaster	Annual
PSEO Explorer	Post Secondary Employment Outcomes (PSEO)	Compares earnings and employment outcomes for recent graduates	Annual
VEO Explorer	Veteran Employment Outcome (VEO)	Compares earnings and employment outcomes for military veterans	Annual
LED Extraction Tool	QWI, J2J, LODES	Easy access to raw data extracts from QWI, J2J and LODES	QWI – Quarterly J2J – Quarterly LODES - Annual



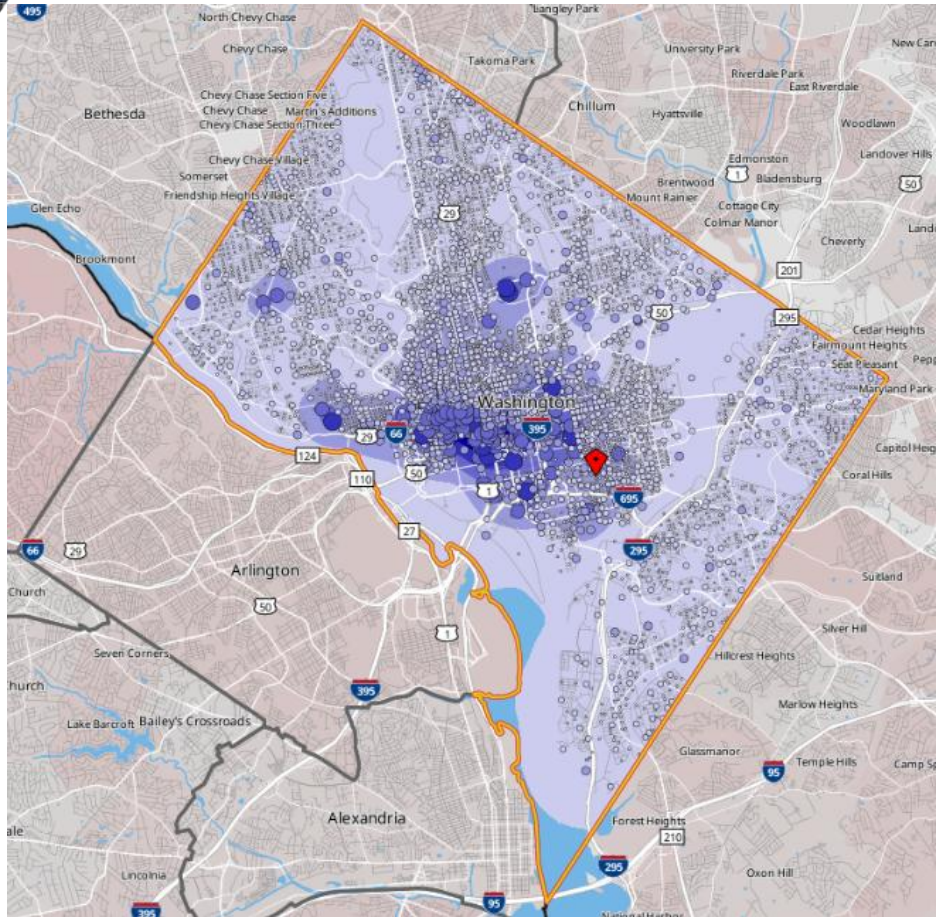
Utilizing OnTheMap to Analyze the Economic Impact of the 2026 FIFA World Cup



<https://nynjfwc26.com/press-releases/3-billion-in-economic-impact/>



OnTheMap



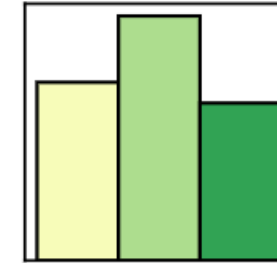
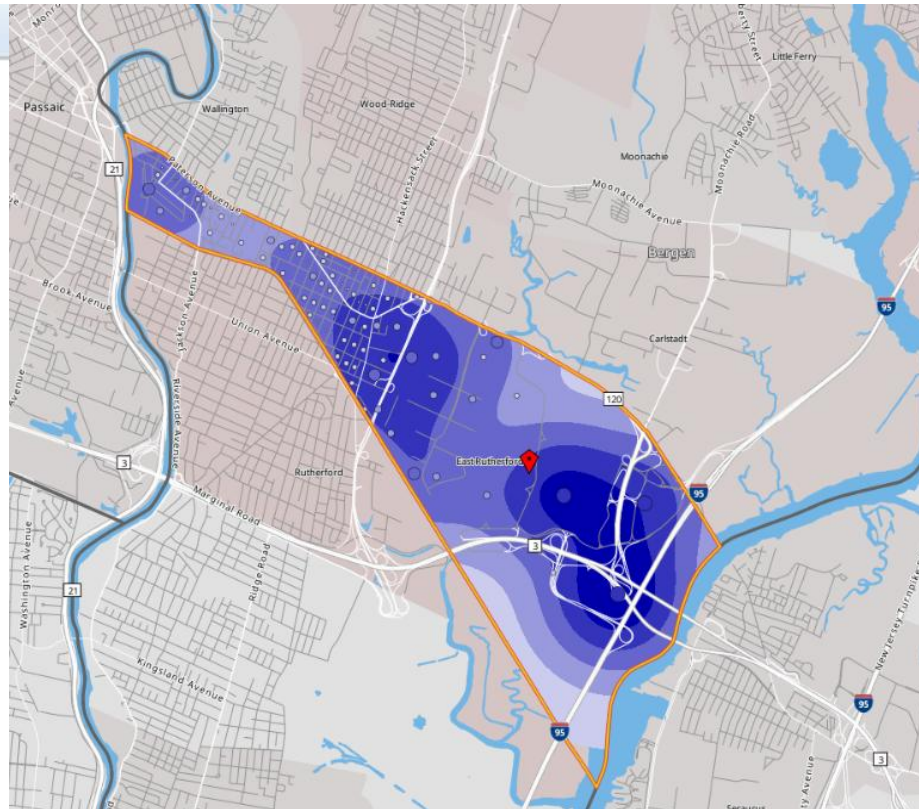
- Web-based mapping tool
- Provides companion reports on worker characteristics
- 6 different analyses to compare labor force data on worker flows and commuting patterns
- Reports on worker residential and employment area comparisons
- Disclosure protection as low as the Census Block



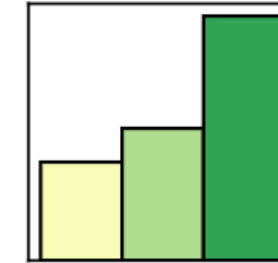
Workforce Area Profile Analysis

Legends

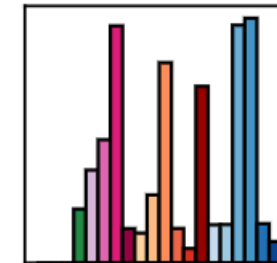
- 5 - 327 Jobs/Sq.Mile
- 328 - 1,296 Jobs/Sq.Mile
- 1,297 - 2,910 Jobs/Sq.Mile
- 2,911 - 5,170 Jobs/Sq.Mile
- 5,171 - 8,076 Jobs/Sq.Mile
- 1 - 5 Jobs
- 6 - 78 Jobs
- 79 - 390 Jobs
- 391 - 1,233 Jobs
- 1,234 - 3,010 Jobs
- Work Area



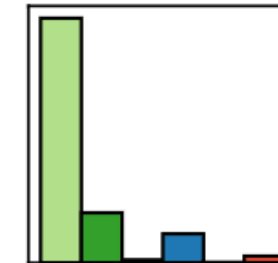
Age



Earnings



Industry Sector



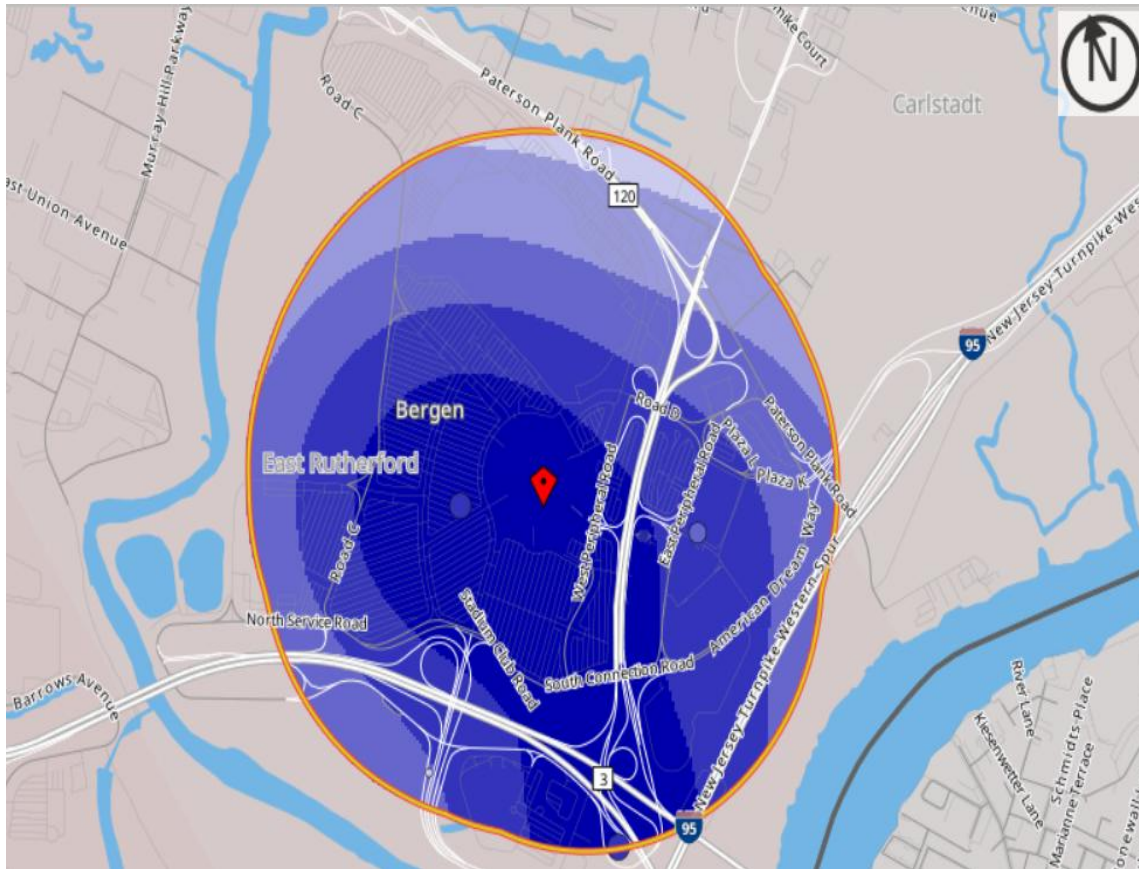
Race

Total Primary Jobs

	2023	
	Count	Share
Total Primary Jobs	13,356	100.0%



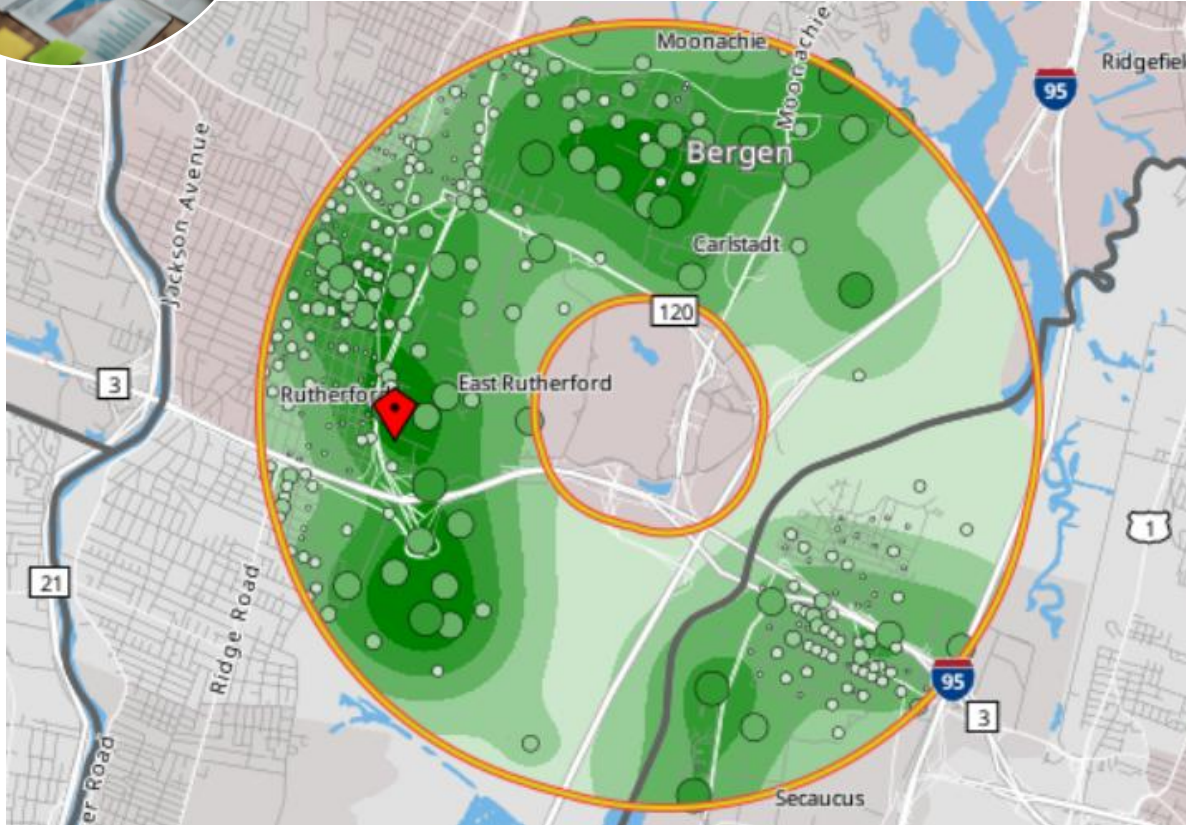
Advanced Selection Tool



Total All Private Jobs		2023	
	Count	Share	
	9,159	100.0%	
Jobs by Worker Age		2023	
	Count	Share	
Age 29 or younger	3,047	33.3%	
Age 30 to 54	3,594	39.2%	
Age 55 or older	2,518	27.5%	
Jobs by Earnings		2023	
	Count	Share	
\$1,250 per month or less	4,245	46.3%	
\$1,251 to \$3,333 per month	2,214	24.2%	
More than \$3,333 per month	2,700	29.5%	



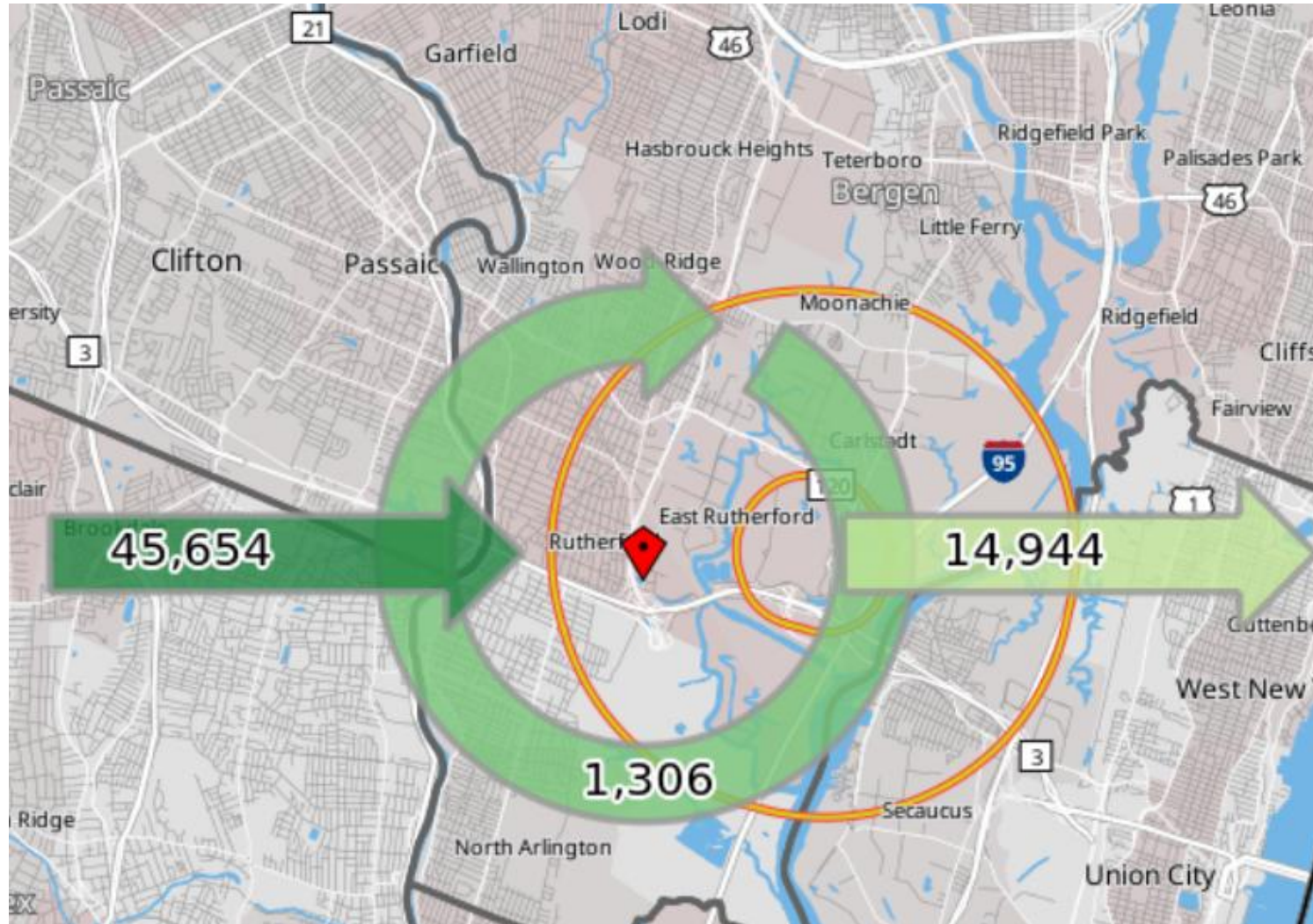
Donut Buffer



Jobs by NAICS Industry Sector		
	2023	
	Count	Share
Agriculture, Forestry, Fishing and Hunting	2	0.0%
Mining, Quarrying, and Oil and Gas Extraction	2	0.0%
Utilities	2	0.0%
Construction	1,827	3.9%
Manufacturing	6,258	13.3%
Wholesale Trade	7,329	15.6%
Retail Trade	3,493	7.4%
Transportation and Warehousing	5,515	11.7%
Information	1,294	2.8%
Finance and Insurance	1,725	3.7%
Real Estate and Rental and Leasing	1,359	2.9%
Professional, Scientific, and Technical Services	3,426	7.3%
Management of Companies and Enterprises	387	0.8%
Administrative and Support and Waste Management and Remediation Services	7,189	15.3%
Educational Services	294	0.6%
Health Care and Social Assistance	3,012	6.4%
Arts, Entertainment, and Recreation	624	1.3%
Accommodation and Food Services	2,549	5.4%
Other Services (excluding Public Administration)	673	1.4%
Public Administration	0	0.0%



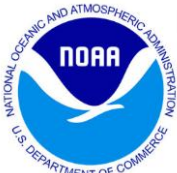
Worker Inflow/Outflow



OnTheMap for Emergency Management



Demographic & Economic Data



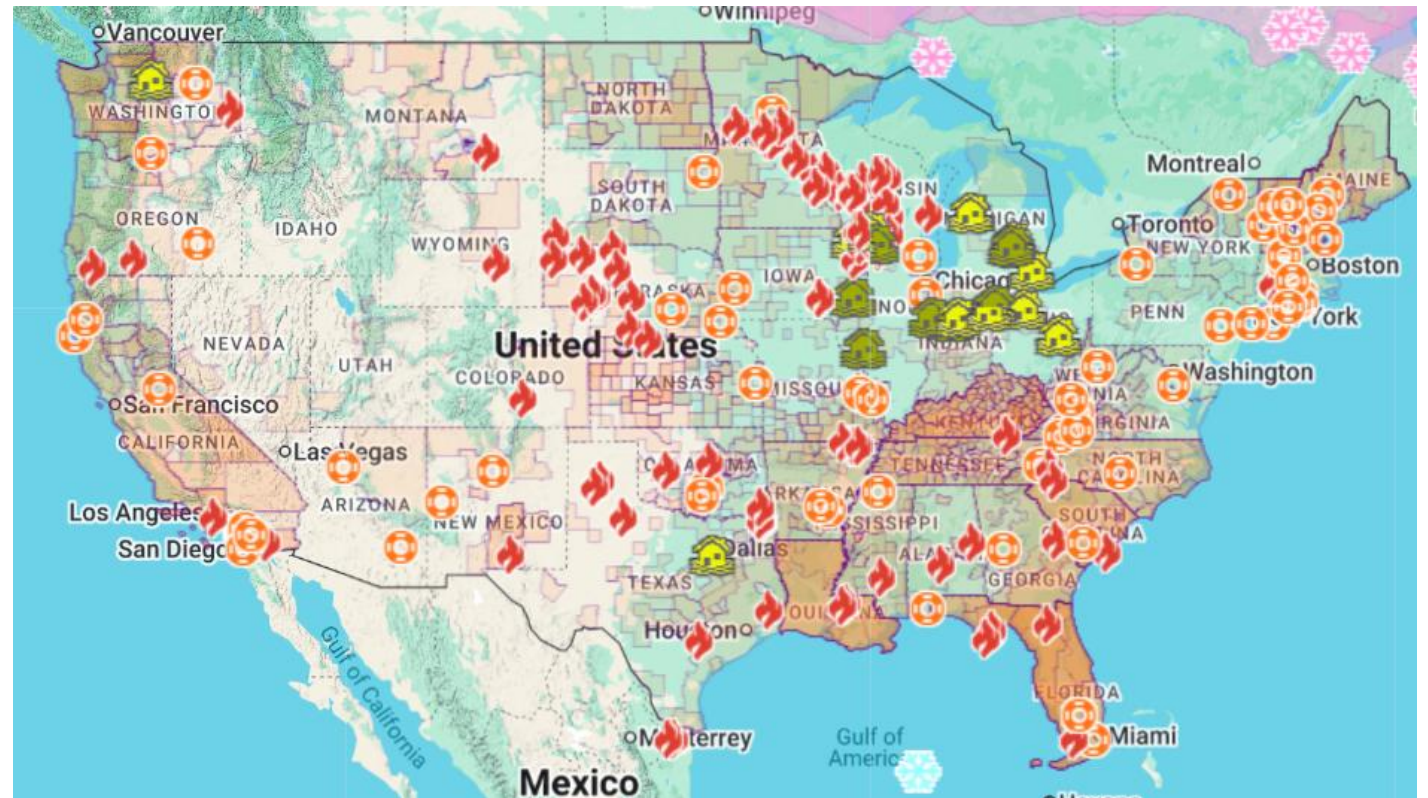
Hurricanes, Floods, Winter Storms



Disaster Areas



Wildfires



New public Data Service for Emergency Preparedness & Response

- Comprehensive Reports
- Real-time Data Updates
- Easy-to-use & Interoperable
- Historical Event Archive
- Flexible Analyses & Visualizations





When Disaster Strikes



Fire personnel respond to homes destroyed while a helicopter drops water as the Palisades Fire grows in Pacific Palisades, California on January 7, 2025. DAVID SWANSON / AFP VIA GETTY IMAGES

Management

When disaster strikes, census data can help show who is in harm's way

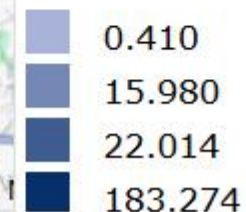
The agency's updated OnTheMap for Emergency Management tool shows how population and workforce data can support rapid response and recovery operations during hurricanes, floods, wildfires and other natural disasters.



Vulnerabilities During Emergency Events



Civilian population 18 years and over for whom poverty status is determined - With a disability per sq. mi. (Tracts)



Characteristic	Estimate	Margin of Error
Total	7095	1276
With a disability	784	277
18 to 64 years	332	206
65 years and over	452	184




Job-to-Job (J2J) Flows Explorer


Guided Entry


- Access to more than 60 measures of worker reallocation
- Data from year 2000 for some states
- Firm and worker characteristics, and tabulations at the state and metro area-levels
- Flexible dashboard interface and interactive visualizations and table exports

1. Start Here

Frame your question by selecting from the three dropdowns below; then click one of the blue links on the right to go to your customized results.

 Hires to

 District of Columbia

 All NAICS Sectors

2. Then Choose an Analysis

Analysis of Job-to-Job Flows

From (Origin Job)

 Which States?

 Which Metro Areas?

 Which Industries?




To (Destination Job)

District of Columbia

 Which Industries?

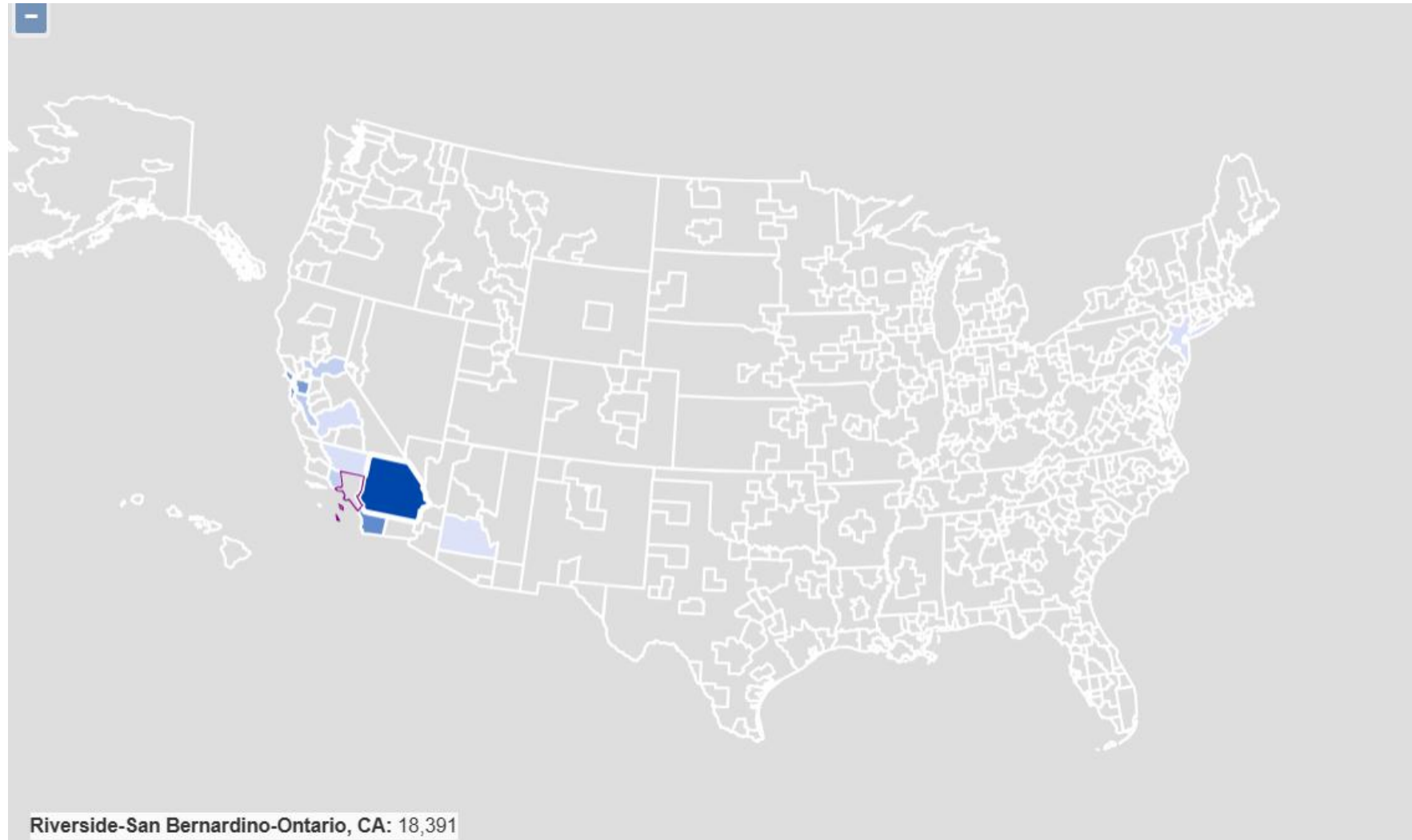
Analysis of Hires Over Time

 Are hires to jobs in District of Columbia coming from nonemployment or another job?

 How do earnings for hires to jobs in District of Columbia compare to earnings for job stayers?

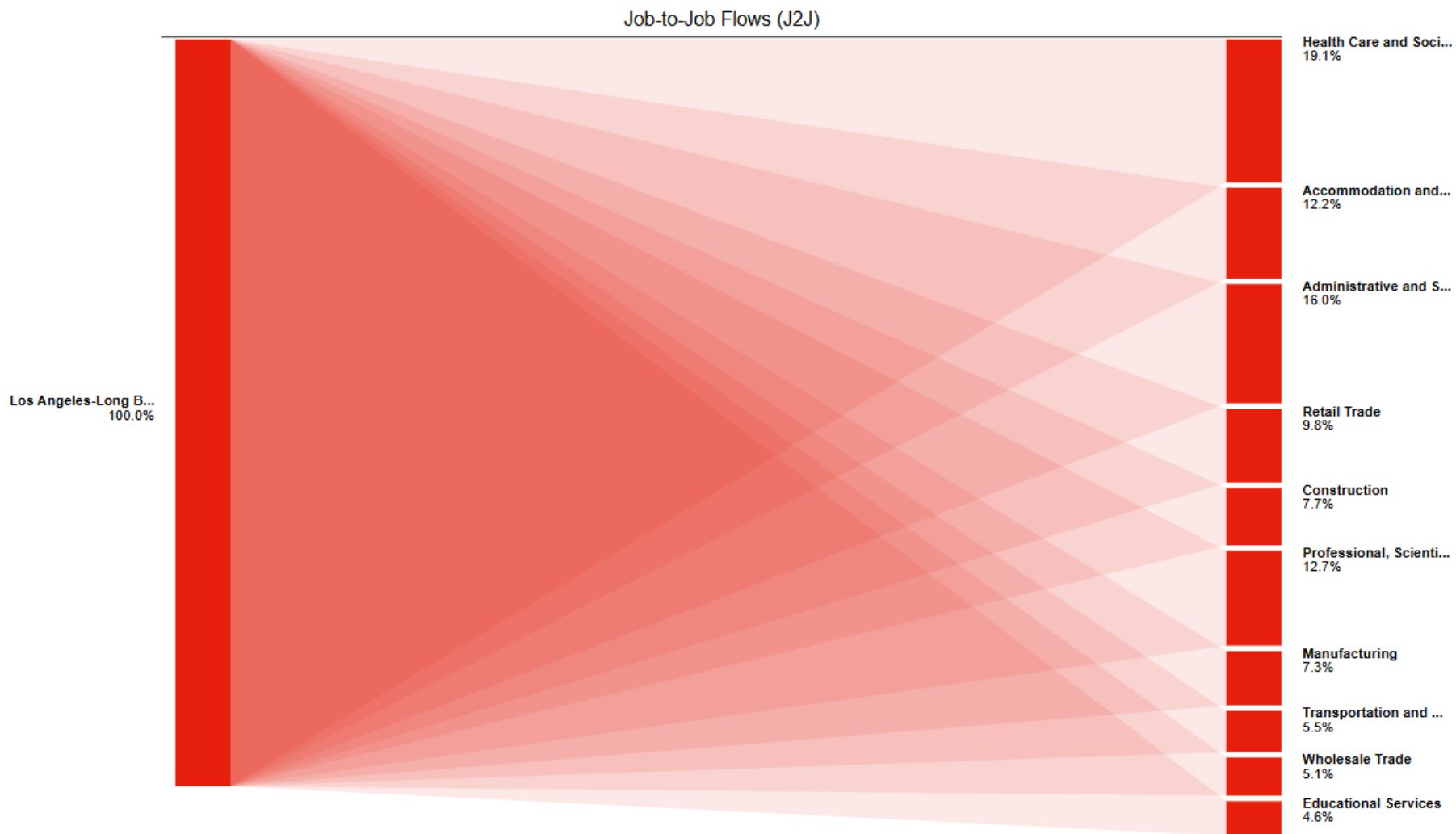


Job-to-Job Flows from Los Angeles Metro Area to Top 10 Metro Areas





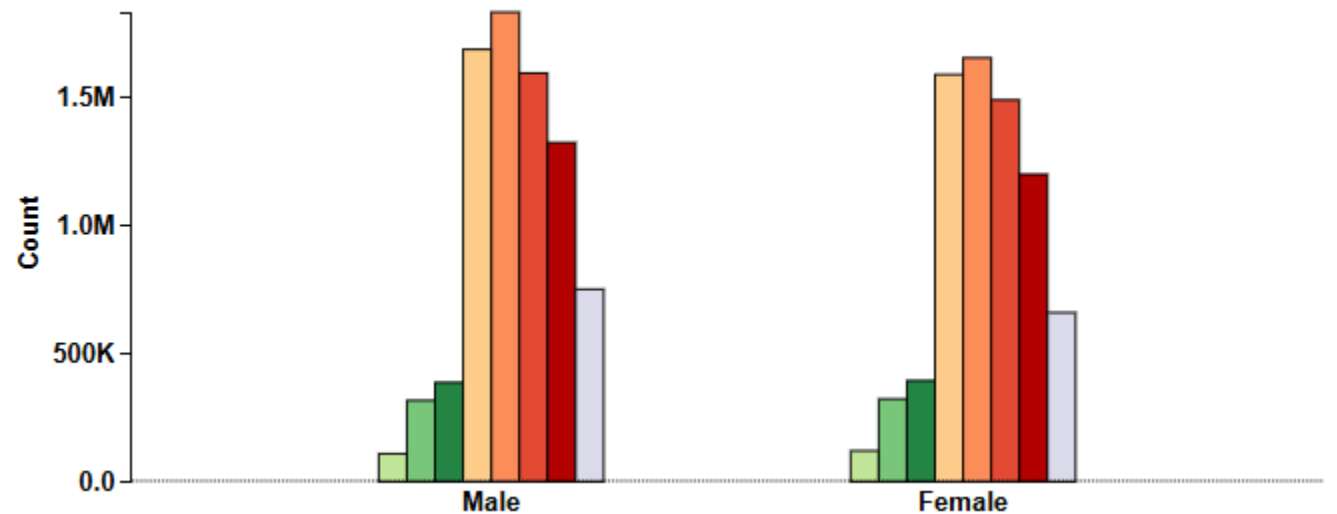
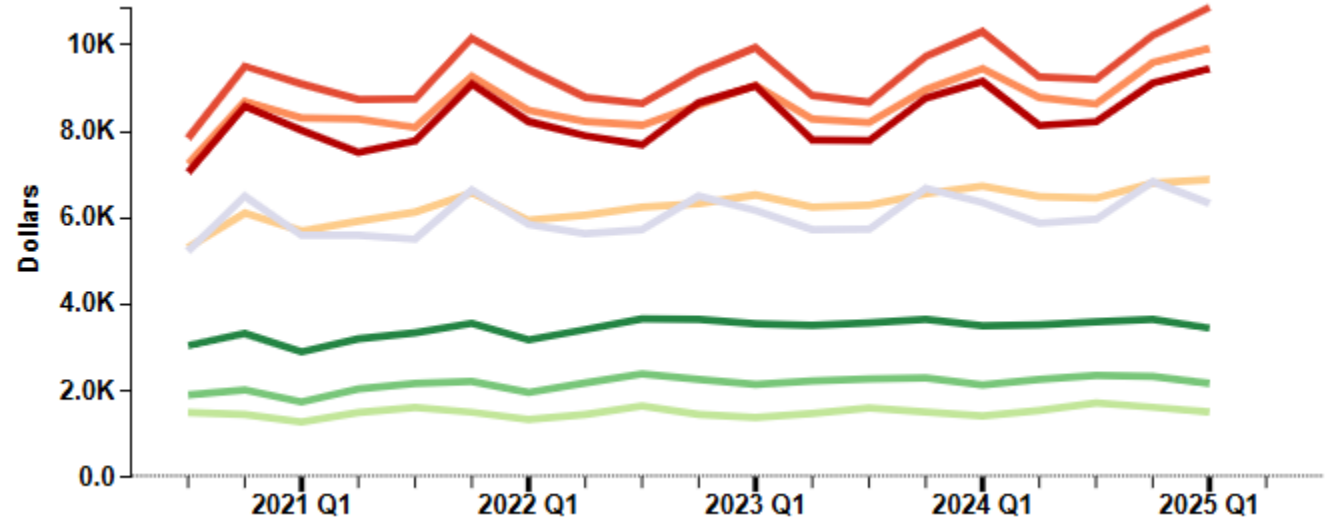
Top 10 Industries Leaving Los Angeles Metro





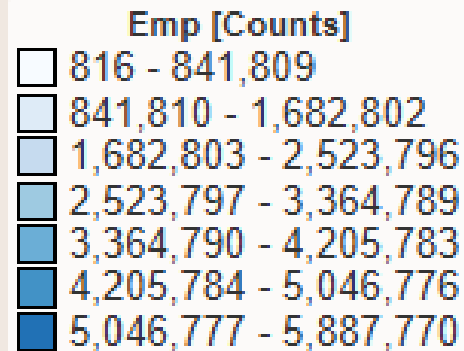
Quarterly Workforce Indicators (QWI) Explorer

- 32 Quarterly Workforce Indicators
- Flexible Pivot Table and Map/Chart interface
- Data on detailed interactions between firms and workers
- Analyze/report by worker demographics: age, earnings, race, ethnicity, educational attainment, and sex
- NAICS 2, 3, 4, 5, and 6-Digit
- Quarterly Data (9-12 Months old)
- National and 50 states available (plus DC and Puerto Rico)





Employee Count in California Metro Areas

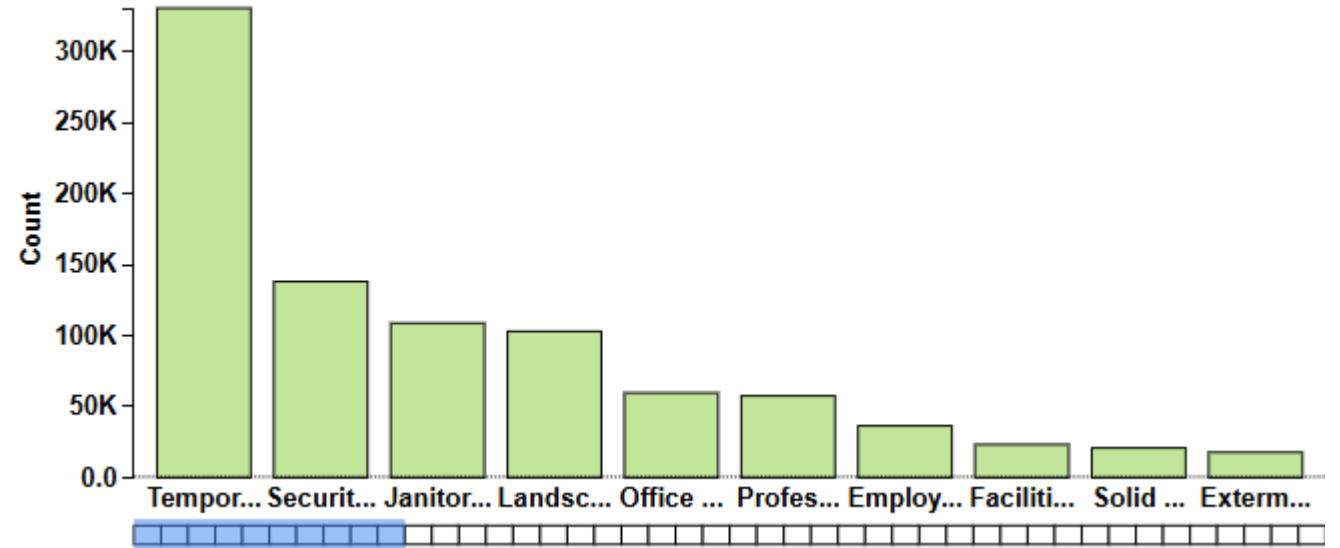


Los Angeles-Long Beach-Anaheim	5,887,770
San Francisco-Oakland-Fremont	2,127,952
Riverside-San Bernardino-Ontario	1,443,344
San Diego-Chula Vista-Carlsbad	1,322,115
San Jose-Sunnyvale-Santa Clara	1,061,361
Sacramento-Roseville-Folsom	839,308
Fresno	395,797
Oxnard-Thousand Oaks-Ventura	274,737
Bakersfield-Delano	253,199
Stockton-Lodi	247,447



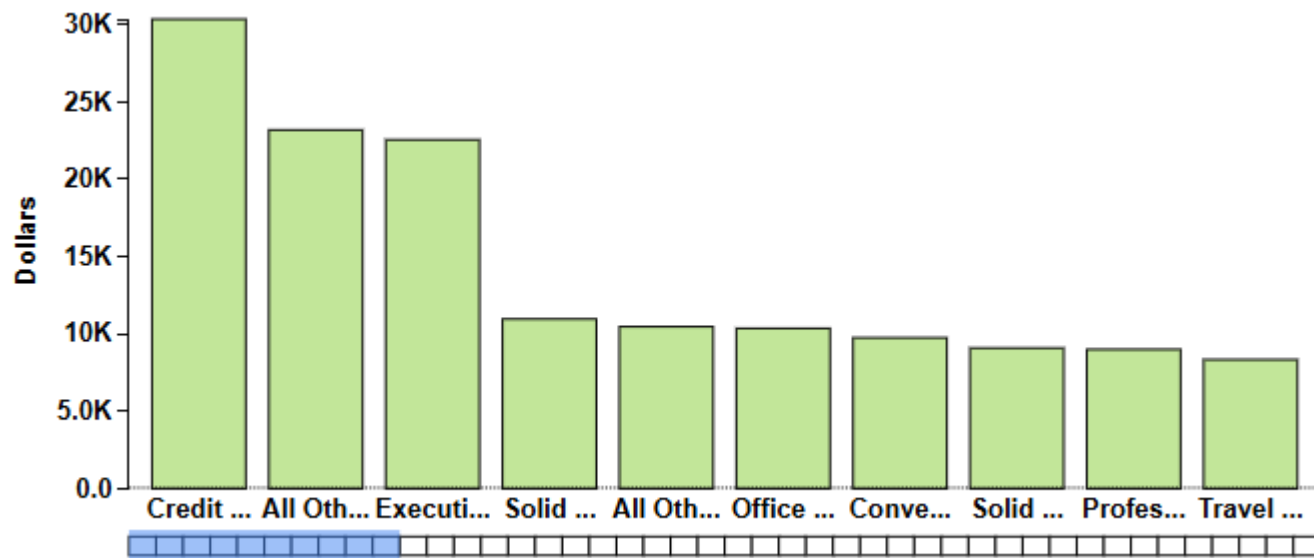
Employment Count 6-Digit NAICS

Temporary Help Services	330,660
Security Guards and Patrol Services	138,121
Janitorial Services	108,888
Landscaping Services	103,075
Office Administrative Services	59,756
Professional Employer Organizations	57,604
Employment Placement Agencies	36,497
Facilities Support Services	23,327
Solid Waste Collection	20,944
Exterminating and Pest Control Services	17,873





6-Digit NAICS Earnings in Administrative and Support and Waste Management and Remediation Services



Credit Bureaus	30,343
All Other Travel Arrangement and Reservation Services	23,186
Executive Search Services	22,553
Solid Waste Combustors and Incinerators	10,963
All Other Business Support Services	10,468
Office Administrative Services	10,364
Convention and Visitors Bureaus	9,754
Solid Waste Landfill	9,092
Professional Employer Organizations	8,999
Travel Agencies	8,341



Veterans Employment Outcomes and Post-Secondary Employment Outcomes Explorer

Data Type

Earnings Flows

State

Illinois ▾

Institution

All Partner Institutions in Illinois ▾

Degree Level

Baccalaureate ▾

Graduation Cohort

All Cohorts ▾

Compare Earnings by

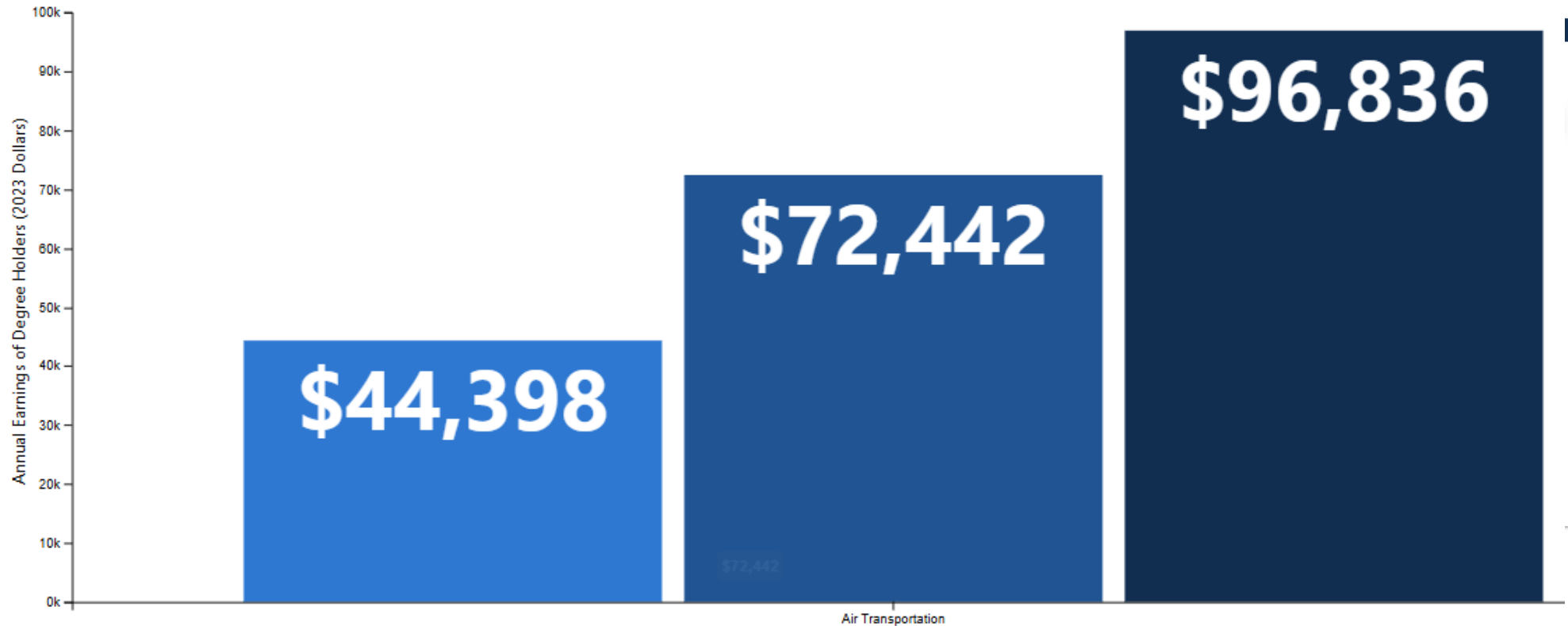
Time Percent

Earnings-percentile Filter

25 50 75

Legend

- 1 Years Postgrad
- 5 Years Postgrad
- 10 Years Postgrad



Drone Operators



Resources

OnTheMap Analysis Guides

- https://lehd.ces.census.gov/applications/help/onthemap.html#!analysis_guides

OnTheMap for Emergency Management Guide

- https://lehd.ces.census.gov/doc/help/onthemap_em/OTMEM_UserGuide.pdf

J2J Explorer

- https://lehd.ces.census.gov/applications/help/j2j_explorer.html#!analysis_guides

QWI Explorer

- https://lehd.ces.census.gov/applications/help/qwi_explorer.html#!example_scenarios

LEHD Training Tab

- <https://lehd.ces.census.gov/training/>



2026 LED Partnership Hybrid Workshop

Keynote Speaker Announced for 2026 LED Partnership Workshop

Join us for a fireside chat with our 2026 Local Employment Dynamics (LED) Partnership Workshop keynote speaker, Ellen Zentner, Chief Economic Strategist and Global Head of Thematic and Macro Investing at Morgan Stanley.



The hybrid workshop will be held May 12-13, from 12-5 p.m. EDT.

The workshop will provide insights into LED data products as well as professional development and networking opportunities. The theme of this year's workshop is "Numbers to Narratives: Data for Better Decisions."

The LED Partnership is a collaboration between state data agencies and the U.S. Census Bureau to leverage existing data in the development of new sources of economic and demographic information.

Register today on our [website!](#)

Questions? Email us at CES.Local.Employment.Dynamics@census.gov.

https://lehd.ces.census.gov/workshops_webinars/workshop/2026.html

Get in Touch with Us

Earlene Dowell

U.S. Census Bureau

Data User and Trade Outreach Branch

EWD.Outreach@census.gov

Earlene.KP.Dowell@census.gov