

# Small Area Income and Poverty Estimates (SAIPE) from the U.S. Census Bureau

**Next SAIPE Release:  
December 2026**

The U.S. Census Bureau's Small Area Income and Poverty Estimates (SAIPE) program provides annual estimates of income and poverty statistics for all school districts, counties, and states. These estimates are used annually for the administration of federal programs and the allocation of federal funds to local jurisdictions. Through modeling and using auxiliary data sources, the SAIPE program enhances survey estimates, reducing margins of error, especially for small geographic areas.

## School district estimates for:

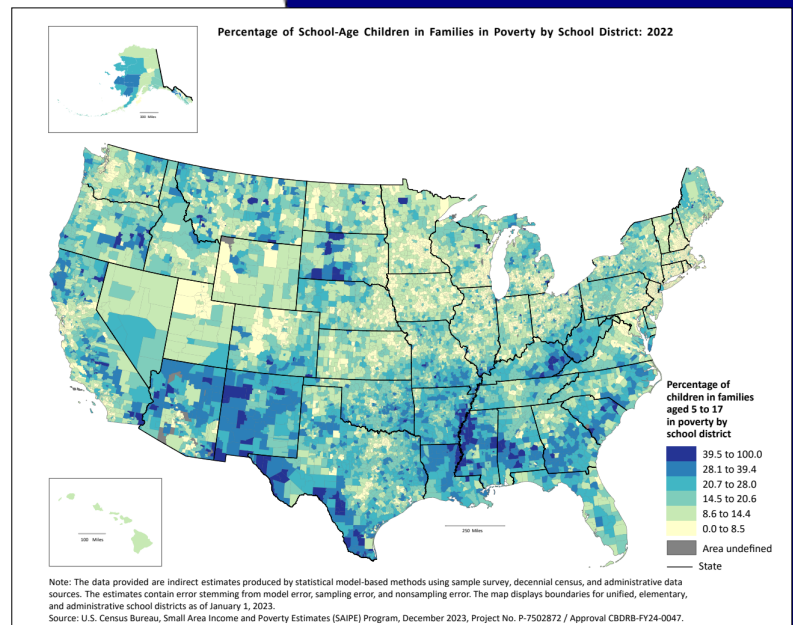
- Total population
- Number of children aged 5 to 17
- Number of related children aged 5 to 17 in families in poverty

## County and state estimates for:

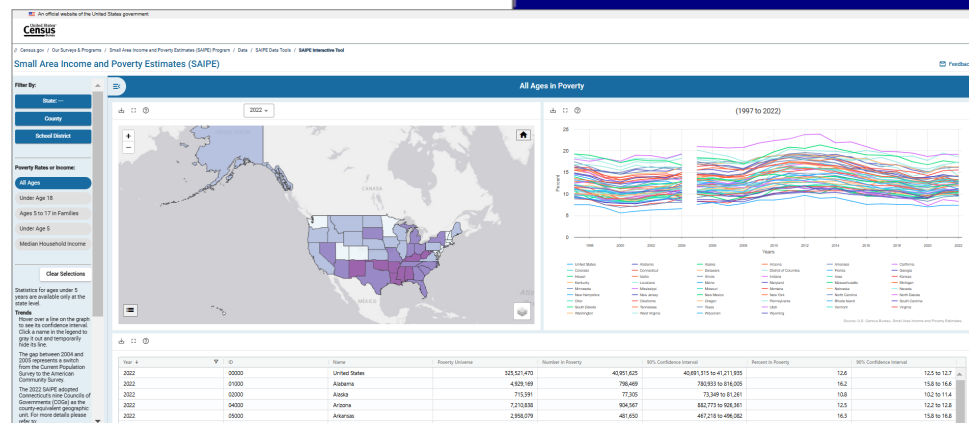
- Total number of people in poverty
- Number of children under age 5 in poverty (for states only)
- Number of related children aged 5 to 17 in families in poverty
- Number of children under age 18 in poverty
- Median household income

## Data Sources for SAIPE:

- American Community Survey (ACS)
- Decennial Census
- Federal income tax records
- Supplemental Nutrition Assistance Program (SNAP) records
- Bureau of Economic Analysis (BEA) personal income estimates
- Supplemental Security Income (SSI) recipients
- Population estimates



**Check out our  
interactive data tool!**



Also visit our sister program  
Small Area Health Insurance Estimates  
(SAHIE)'s web site:  
<https://www.census.gov/programs-surveys/sahie.html>

Website: <https://www.census.gov/programs-surveys/saipe.html>

Data Tool: <https://www.census.gov/data/data-tools/saipe-interactive.html>

Connect with us: **United States  
Census  
Bureau**