

Name \_\_\_\_\_

# The Opportunity Atlas

Use The Opportunity Atlas for this activity: <https://www.opportunityatlas.org>.

## 1. Conduct Research

Imagine you are moving to the United States from another country and are unsure where to live. Use data from The Opportunity Atlas to determine which of two cities has more opportunity for your social mobility.

First, write down the cities that your teacher names as City 1 and City 2.

City 1: \_\_\_\_\_

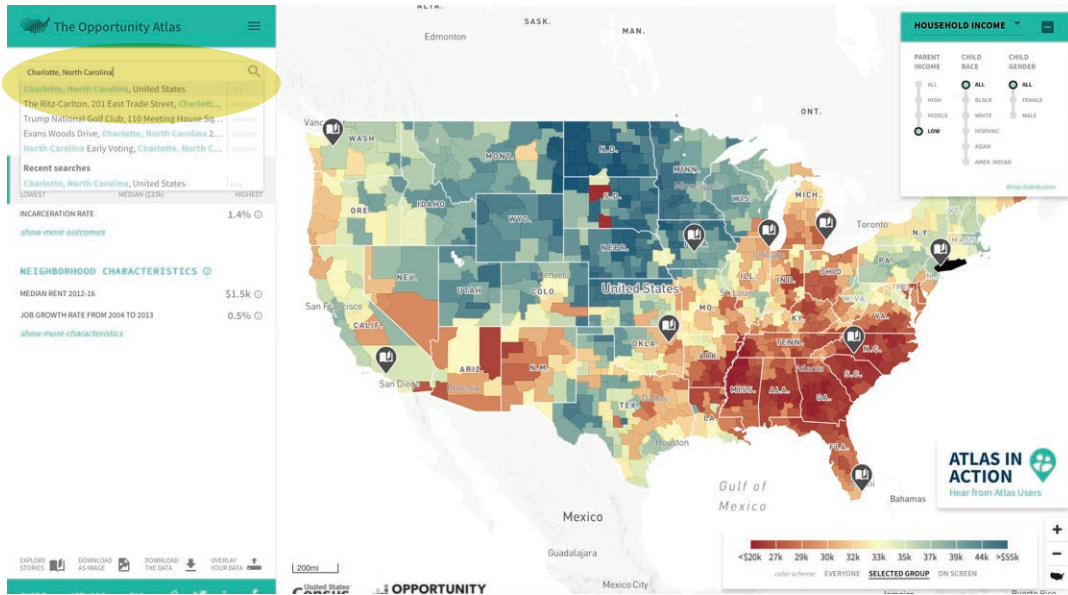
City 2: \_\_\_\_\_

Now, in The Opportunity Atlas, follow the steps on your worksheet for City 1. Once you are done with City 1, follow the same steps for City 2. Record the data you find in the table on your worksheet.

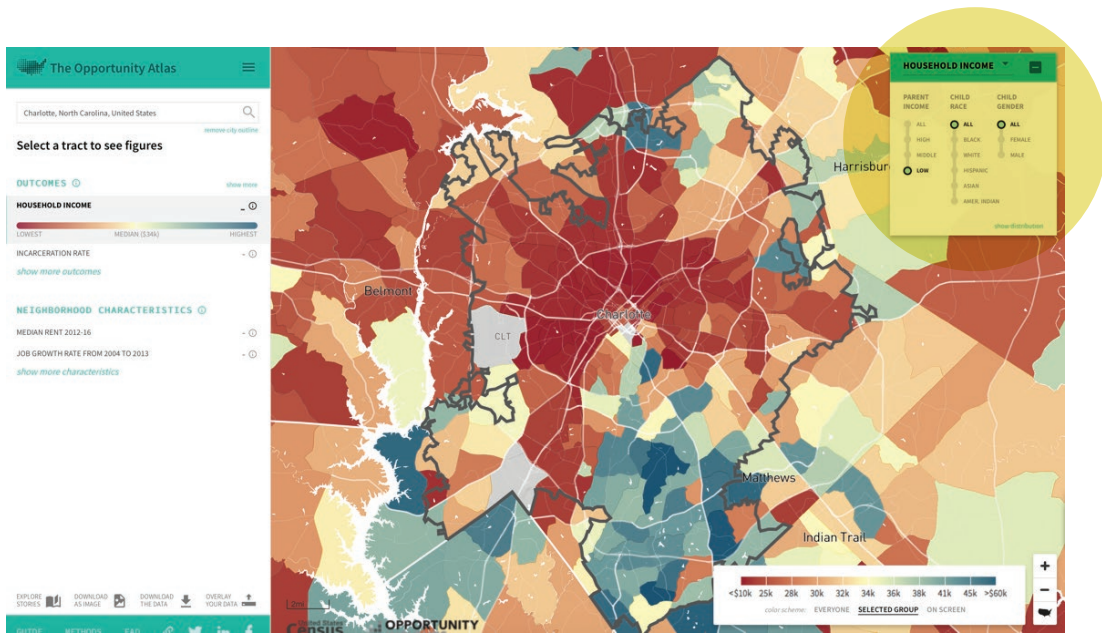
**Note:** Images on the following pages show Charlotte, North Carolina, as an example.

Exploration of City 1:

**Step 1:** Navigate to the online tool, click the button to “Begin Exploring,” then in the “search for address or place” box in the top left, type in the first city and state.



**Step 2:** Next, look at the box in the upper right hand corner of the screen and begin toggling the green dots between settings. Observe how opportunities change based on race and sex in City 1.





**Step 3:** In the upper right hand corner, make sure household income (*average annual household income in 2014-15*) is selected from the top drop-down menu, then select your own sex and race in your search. Scroll over the different neighborhoods on the screen in your selected city. Zoom in to one tract within City 1 and click on a tract you want to focus on. (Be sure to zoom in far enough so the data is shown by tract.) Record the name of that tract and record the data for household income on your student worksheet.

**Step 4:** Next, select employment rate from the drop-down menu with your own sex and race selected. Record the data for the same tract you chose within City 1 on your worksheet.





	City 1: _____ Tract Selected: _____	City 2: _____ Tract Selected: _____
Household income (my sex and race)		
Employment rate (my sex and race)		

## 2. Make a Decision

Based on the data, is City 1 or City 2 the best location if you were moving from another country? Explain your answer, using information from each category you recorded above.

## Home Extension

Take your student worksheet home and share your findings from class with an adult in your home. Ask them if they ever considered living in a different part of the state or country and how they decided to live in your neighborhood. Remind them that the 2020 Census is coming in March 2020 and ask who will be completing the census for your household.