

U.S. Census Bureau Economic Programs

Business Data for You

The U.S. Census Bureau measures America's people, places and economy. We provide a wealth of statistics that are essential resources to help businesses in your area succeed and grow.

Business Programs

Economic Census

Provides the most detailed and comprehensive business data available from the Census Bureau every 5 years on employer businesses down to the city and town level. [census.gov/programs-surveys/economic-census.html](https://www.census.gov/programs-surveys/economic-census.html)

Economic Indicators

Provides monthly and quarterly data that are timely, reliable, and offer comprehensive measures of the U.S. economy. These statistics cover construction, housing, international trade, retail trade, wholesale trade, services and manufacturing. [census.gov/econ/currentdata](https://www.census.gov/econ/currentdata)

International Trade

Provides monthly and annual data on imports and exports of goods and services at the state, district, and port levels. Data are shown by industry, commodity, and country for certain types of businesses. [census.gov/trade](https://www.census.gov/trade)

Longitudinal Employer-Household Dynamics

Provides new, cost effective, data products and visualization tools combining federal, state, and Census Bureau data on employers and employees under the Local Employment Dynamics (LED) partnership. These data help users research and characterize workforce dynamics for specific groups (e.g. age, education, ethnicity, race, and sex), with various levels of geographic detail. lehd.ces.census.gov/data/#qwi

County Business Patterns

Provides annual data on number of businesses, employment, and payroll for employer businesses down to the County level for all types of businesses. Also includes business counts by ZIP Code. [census.gov/programs-surveys/cbp.html](https://www.census.gov/programs-surveys/cbp.html)

Nonemployer Statistics

Provides annual data on number of firms and revenue for businesses without employees (including independent contractors) down to the County level for certain types of businesses. [census.gov/programs-surveys/nonemployer-statistics.html](https://www.census.gov/programs-surveys/nonemployer-statistics.html)

Statistics of U.S. Businesses

Provides annual data on business births, deaths, expansions, and contractions at the national and state levels for most types of businesses. [census.gov/programs-surveys/susb.html](https://www.census.gov/programs-surveys/susb.html)

Survey of Business Owners, Annual Survey of Entrepreneurs, and (new) Annual Business Survey

These programs publish data based on the race, ethnicity, gender, and veteran status of the business owner. [census.gov/programs-surveys/sbo.html](https://www.census.gov/programs-surveys/sbo.html), [census.gov/programs-surveys/ase.html](https://www.census.gov/programs-surveys/ase.html), and www.census.gov/programs-surveys/abs.html

Business Formation Statistics

The Business Formation Statistics measure business initiation activity and the cycle from initiation to realized business formation. The BFS gives an early look at business formation activity within the United States at a detailed state level. www.census.gov/econ/bfs

Public Sector

Includes info on the financial activities of state and local governments such as revenues, expenditures, debts and assets; federal spending; and employment for all levels of government. [census.gov/govs](https://www.census.gov/govs)



U.S. Department of Commerce
U.S. CENSUS BUREAU
[census.gov](https://www.census.gov)

Key Data Tools Census Business Builder

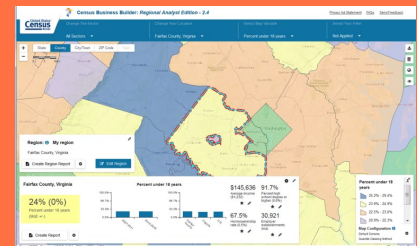


The Census Business Builder (CBB) is a suite of services that provide selected demographic and economic data from the Census Bureau tailored to specific types of users in a simple to access and use format.

Data Included

- Demographic, socioeconomic, and housing data from the American Community Survey
- Business data from the County Business Patterns, Nonemployer Statistics, Economic Census, and Survey of Business Owners
- Imports and Exports data from the International Trade program
- Workforce data from the Quarterly Workforce Indicators
- Building Permits data from the Building Permits Survey
- Your own data (via Excel file upload feature)
- Consumer Spending data from Esri
- Agriculture data from the Census of Agriculture (USDA)
- Employment and related data from the Bureau of Labor Statistics (BLS) Quarterly Census of Employment and Wages (QCEW)

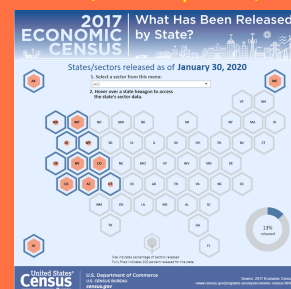
[census.gov/data/data-tools/cbb.html](https://www.census.gov/data/data-tools/cbb.html)



2017 Economic Census

The 2017 Economic Census is being released on a flow basis between September 2019 and December 2021. This page will help you keep track of what is being released.

www.census.gov/programs-surveys/economic-census/news-updates/releases.html

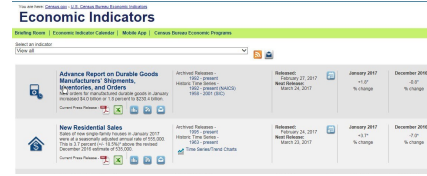


Other Business Data Tools

Economic Indicators

Quickly find data about the economy in a customizable and downloadable format.

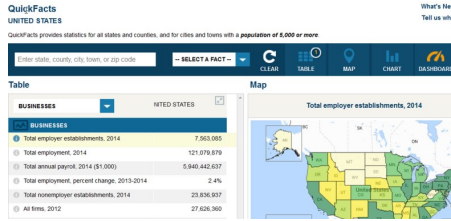
census.gov/economic-indicators



FRED

The U.S. Census Bureau has collaborated with the Federal Reserve Bank of St. Louis to ensure data for the Economic Indicators are available via the FRED mobile app. FRED allows users to download, graph, and track over 500,000 U.S. and international time series from more than 85 sources.

<https://fred.stlouisfed.org>



QuickFacts

QuickFacts presents key demographic and business data across multiple Census programs. The user can view the data for a state, county, city/town, or ZIP Code in a simple table, chart, or map display, and can download and share the data with their colleagues.

census.gov/quickfacts/

USA Trade Online

USA Trade Online is a dynamic data tool that gives users access to current and cumulative U.S. export and import data. With multiple data sets and capabilities, it can assist different types of customers from a wide range of industries and fields.

usatrade.census.gov/

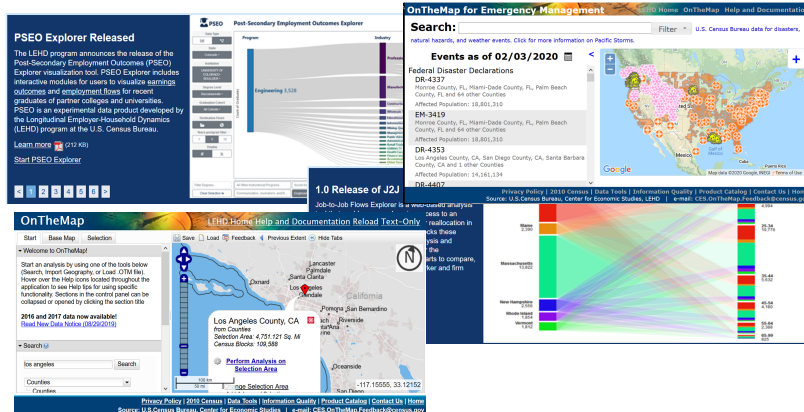


Longitudinal Employer-Household Dynamics (LEHD)

This program provides statistics on employment, earnings, and job flows at detailed levels of geography and industry and for different demographic groups.

lehd.ces.census.gov/

- PSEO Explorer
- J2J Explorer
- QWI Explorer
- OnTheMap
- OnTheMap for Emergency Management
- LED Extraction Tool



Data.Census.gov

Data.census.gov is the primary platform for accessing data and digital content from the U.S. Census Bureau. Data users of all skill levels use data.census.gov to search billions of ACS and other Census Bureau statistics in a customer-driven experience. The site allows you to drill down to some of the most detailed topics/geographies, download data files, and create customized maps.