

TIME SERIES / TREND CHARTS

 [Time Series/Trend Charts: Create your own customizable time series](#)

Can be accessed from BFS website www.census.gov/econ/bfs on both the Main tab and the Data tab

Economic Indicators

[Briefing Room](#) | [Economic Indicator Calendar](#) | [2019 Release Dates \(PDF\)](#) | [Census Bureau Economic Programs](#)

Select an indicator



Business Formation Statistics

Total U.S. Business Applications were 861.667 in the first quarter of 2019, down 0.9% from fourth quarter 2018.

Current Press Release -   

Archived Releases -

[2019 - present](#)

[Historic Time Series -](#)

[2004 - present](#)

 [Time Series/Trend Charts](#)



Advance Monthly Sales for Retail and Food Services

U.S. retail and food services sales for April 2018 were \$497.6 billion, an increase of 0.3 percent (+/-0.4%)* from the previous month. Jenna TEST 5/1

Current Press Release -   

Archived Releases -

[1953 - present](#)

[Historic Time Series -](#)

[1992 - present](#)

 [Time Series/Trend Charts](#)



Advance Monthly Wholesale Inventories

April end-of-month inventories were \$629.4 billion, virtually unchanged (+/- 0.2 percent)* from last month. -- Jenna 4/26 TEST

Current Press Release -   

Archived Releases -

[2016 - present](#)

[Historic Time Series -](#)

 [Time Series/Trend Charts](#)

Can be accessed from the Economic Indicators Briefing Room website www.census.gov/economic-indicators

Available Business Formation Statistics Data

Series Available

- Total Business Applications (BA)
- High-Propensity Business Applications (HBA)
- Business Applications with Planned Wages (WBA)
- Business Applications from Corporations (CBA)
- Business Formations within 4 Quarters (BF4Q)
- Projected Business Formations within 4 Quarters (PBF4Q)
- Spliced Business Formations within 4 Quarters (SBF4Q)
- Business Formations within 8 Quarters (BF8Q)
- Projected Business Formations within 8 Quarters (PBF8Q)
- Spliced Business Formations within 8 Quarters (SBF8Q)
- Average Duration from Business Application to Formation within 4 Quarters (DUR4Q)
- Average Duration from Business Application to Formation within 8 Quarters (DUR8Q)

Geographical levels available

- United States
- Regions: Northeast, Midwest, South, West
- 50 states and District of Columbia

Type of data available

- Seasonally Adjusted (where applicable)
- Not Seasonally Adjusted

Business and Industry

- Main
- About the Surveys
- Data by Geography
- Data by Survey
- FAQs

In This Section:

- Technical Document [PDF, 825KB]
- Chart Instructions [PDF, 658KB]
- Download Data Sets

Data by Sector:

- Economy-Wide
- Construction
- Governments
- International Trade
- Manufacturing
- Retail Trade
- Services
- Wholesale Trade
- Other Sectors

TIME SERIES / TREND CHARTS

Please follow the numbers in order.

- Select the report/survey from which you wish to retrieve data:
Business Formation Statistics
- Select a date range:
Start: 2004 End: 2019
- Select Industry or Category:
Business Applications
- Select one Item :
Total Applications
- Select Geographical Level:
United States

Select as available:
 Seasonally Adjusted
 Not Seasonally Adjusted

GET DATA

[Download all data for this report/survey](#)

[Save this search](#)

1. Select "Business Formation Statistics"

2. Choose any date range from 2004 through the present year

3. Choose any business applications, business formations, or average duration series from the drop-down

TIME SERIES / TREND CHARTS

Please follow the numbers in order.

- Select the report/survey from which you wish to retrieve data:
Business Formation Statistics
- Select a date range:
Start: 2004 End: 2019
- Select Industry or Category:
 - Business Applications
 - Business Applications from Corporations
 - High-Propensity Business Applications
 - Business Applications with Planned Wages
 - Business Formations within Four Quarters
 - Business Formations within Eight Quarters
 - Projected Business Formations within Four Quarters
 - Projected Business Formations within Eight Quarters
 - Spliced Business Formations within Four Quarters
 - Spliced Business Formations within Eight Quarters
 - Average Duration (in Quarters) from Business Application to Formation within Four Quarters
 - Average Duration (in Quarters) from Business Application to Formation within Eight Quarters

GET DATA

[Download all data for this report/survey](#)

[Save this search](#)

You are here: [Census.gov](#) > [Business & Industry](#) > Time Series / Trend Charts

Business and Industry

- Main
- About the Surveys
- Data by Geography
- Data by Survey
- FAQs

- In This Section:**
- Technical Document [PDF, 825KB]
 - Chart Instructions [PDF, 658KB]
 - Download Data Sets

- Data by Sector:**
- Economy-Wide
 - Construction
 - Governments
 - International Trade
 - Manufacturing
 - Retail Trade
 - Services
 - Wholesale Trade
 - Other Sectors

TIME SERIES / TREND CHARTS

Please follow the numbers in order.

1 Select the report/survey from which you wish to retrieve data:
Business Formation Statistics

2 Select a date range:
Start: 2004 End: 2019

3 Select Industry or Category:
Business Applications

4 Select one Item :
Total Applications

5 Select Geographical Level:
United States

Select as available:
 Seasonally Adjusted
 Not Seasonally Adjusted

GET DATA

[Download all data for this report/survey](#)

[Save this search](#)

4. This will be set automatically depending on what series is chosen in 3.

5. Select U.S., region, or state from drop-down menu

Select seasonally adjusted or not seasonally adjusted data. Note: The Duration series are only available as not seasonally adjusted.

Click "GET DATA"

Option to save your search criteria to your favorites menu

5 Select Geographical Level:

- United States
- Northeast
- Midwest
- South
- West
- Alaska
- Alabama
- Arkansas
- Arizona
- California
- Colorado
- Connecticut
- District of Columbia
- Delaware
- Florida
- Georgia
- Hawaii
- Iowa
- Idaho
- Illinois
- Indiana
- Kansas
- Kentucky
- Louisiana
- Massachusetts
- Maryland
- Maine
- Michigan
- Minnesota
- Missouri

Download report/survey

Save

Statistics for United States

1st Quarter
NA
610,6
670,8
650,8

Download the data straight from the website to Excel in both vertical and horizontal formats

Source: Business Formation Statistics ([Definitions](#))

Business Applications: United States — Seasonally Adjusted Total Applications [Units]

[TXT](#)
[XLS-V](#)
[XLS-H](#)
[Bar Chart](#)
[Line Chart](#)

Year	1st Quarter	2nd Quarter
2004	NA	NA
2005	610,662	618,095
2006	670,803	669,661
2007	650,808	661,713
2008	639,536	649,887
2009	600,553	596,994
2010	608,150	614,931
2011	652,789	617,665
2012	618,712	643,917
2013	639,933	636,522
2014	650,969	676,030
2015	705,343	687,561
2016	727,609	712,507
2017	776,797	789,437
2018	861,732	871,864
2019	861,667	NA

U.S. Census Bureau					
Source: Business Formation Statistics					
Business Applications: United States					
Not Seasonally Adjusted Total Applications [Units]					
Period: 2004 to 2019					
Year	1st Quarter	2nd Quarter	3rd Quarter	4th Quarter	
2004	NA	NA	541,170	528,290	
2005	669,705	652,556	593,588	583,289	
2006	734,494	706,506	614,831	592,039	
2007	711,593	697,542	631,588	616,378	
2008	699,690	683,466	601,273	572,447	
2009	658,951	626,562	574,040	540,057	
2010	670,803	643,733	584,678	560,891	
2011	724,446	645,958	594,102	571,129	
2012	691,827	671,820	582,018	589,871	
2013	720,780	663,126	607,606	584,280	
2014	739,297	702,394	632,044	605,370	
2015			665,636	596,371	
2016			717,560	640,999	
2017			750,702	696,562	
2018			825,685	736,340	
2019			NA	NA	

Period	Value
Q1-2004	NA
Q2-2004	NA
Q3-2004	574,775
Q4-2004	583,205
Q1-2005	610,662
Q2-2005	618,095
Q3-2005	630,380
Q4-2005	642,876
Q1-2006	670,803
Q2-2006	669,661
Q3-2006	652,249
Q4-2006	651,491
Q1-2007	650,808
Q2-2007	661,713
Q3-2007	669,250
Q4-2007	678,042
Q1-2008	639,536
Q2-2008	649,887
Q3-2008	636,096
Q4-2008	630,523
Q1-2009	600,553
Q2-2009	596,994
Q3-2009	607,464

[PDF] or denotes a file in Adobe's [Portable Document Format](#). To view the file, you will need the [Adobe](#) document is in the Microsoft® Excel® Spreadsheet Format (XLS). To view the file, you will need the [Mik](#) indicates a link to a non-government web site. Our linking to these sites does not constitute an endorsement to another site you are subject to the policies of the new site.

Create a bar chart

GET DATA

[Download all data for this report/survey](#)

[Save this search](#)

The statistics presented in this release are based on administrative data and therefore are not subject to sampling error. Non-sampling error occurs because accurate information cannot always be obtained due to misreporting, mistakes in recording and coding responses, misinterpretation of questions, and other factors. Since sampling error is not measured directly, the Census Bureau employs quality control procedures to minimize non-sampling error. The Y-axis for the line charts may be truncated to prevent flattening of the lines or to present the data in a more readable format.

Source: Business Formation Statistics ([Definitions](#))

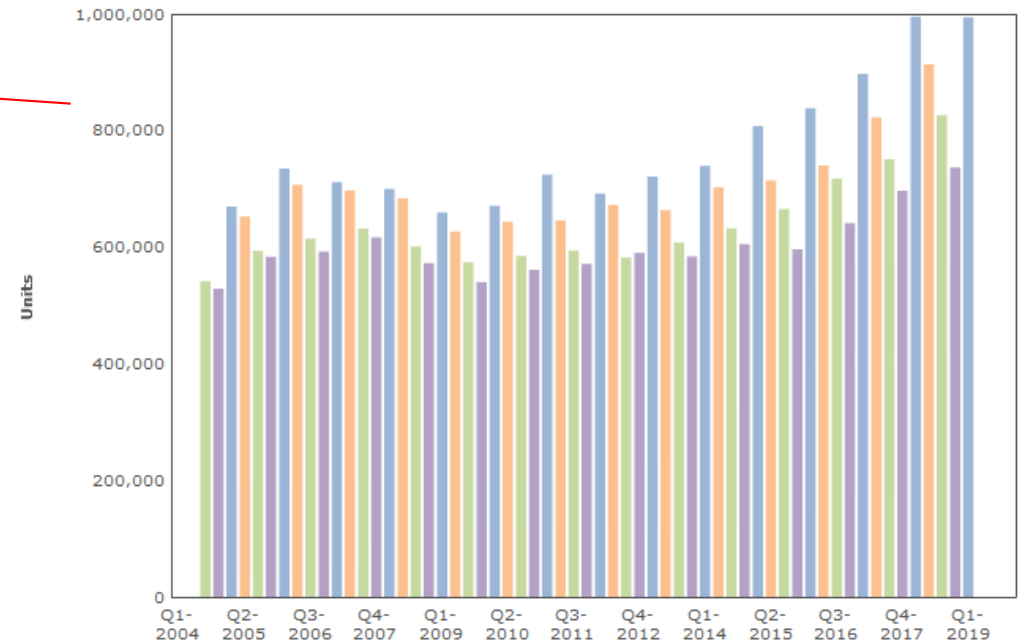
Business Applications: United States — Not Seasonally Adjusted Total Applications [Units]

[TXT](#) [XLS-V](#) [XLS-H](#) [Bar Chart](#) [Line Chart](#)

Year	1st Quarter	2nd Quarter
2004	NA	NA
2005	669,705	652,556
2006	734,494	706,506
2007	711,593	697,542
2008	699,690	683,466
2009	658,951	626,562
2010	670,803	643,733
2011	724,446	645,958
2012	691,827	671,820
2013	720,780	663,126
2014	739,297	702,394
2015	807,338	713,966
2016	838,183	740,160
2017	897,411	822,854
2018	995,240	913,112
2019	993,853	NA

Source: Business Formation Statistics
Business Applications: United States
Q1-2004 to Q4-2019

Not Seasonally Adjusted Total Applications



Create a line chart

GET DATA

[Download all data for this report/survey](#)

[Save this search](#)

The statistics presented in this release are based on administrative data and therefore are not subject to sampling error. Non-sampling error occurs because accurate information cannot always be obtained because of misreporting, mistakes in recording and coding responses, misinterpretation of questions, and other factors. Since sampling error is not measured directly, the Census Bureau employs quality control procedures to minimize non-sampling error. The Y-axis for the line charts may be truncated to prevent flattening of the lines or to present the data in a more readable format.

Source: Business Formation Statistics ([Definitions](#))

Business Applications: United States — Not Seasonally Adjusted Total Applications [Units]

[TXT](#) [XLS-V](#) [XLS-H](#) [Bar Chart](#) [Line Chart](#)

Year	1st Quarter	2nd Quarter
2004	NA	NA
2005	669,705	652,556
2006	734,494	706,506
2007	711,593	697,542
2008	699,690	683,466
2009	658,951	626,562
2010	670,803	643,733
2011	724,446	645,958
2012	691,827	671,820
2013	720,780	663,126
2014	739,297	702,394
2015	807,338	713,966
2016	838,183	740,160
2017	897,411	822,854
2018	995,240	913,112
2019	993,853	NA

Source: Business Formation Statistics
Business Applications: United States
Q1-2004 to Q4-2019

Not Seasonally Adjusted Total Applications

