

Who is “Black” in America?

- “Black or African American” refers to a person having origins in any of the Black racial groups of Africa
 - Includes Sub-Saharan African entries (e.g., Kenyan; Nigerian)
 - Includes Afro-Caribbean entries (e.g., Haitian; Jamaican)
- Black ***alone or in combination*** population = **all people** who reported Black, either ***alone***, or ***in combination*** with one or more other race groups (e.g., Black ***and*** White; Black ***and*** Asian)

Black Population: July 1, 2011

44 million

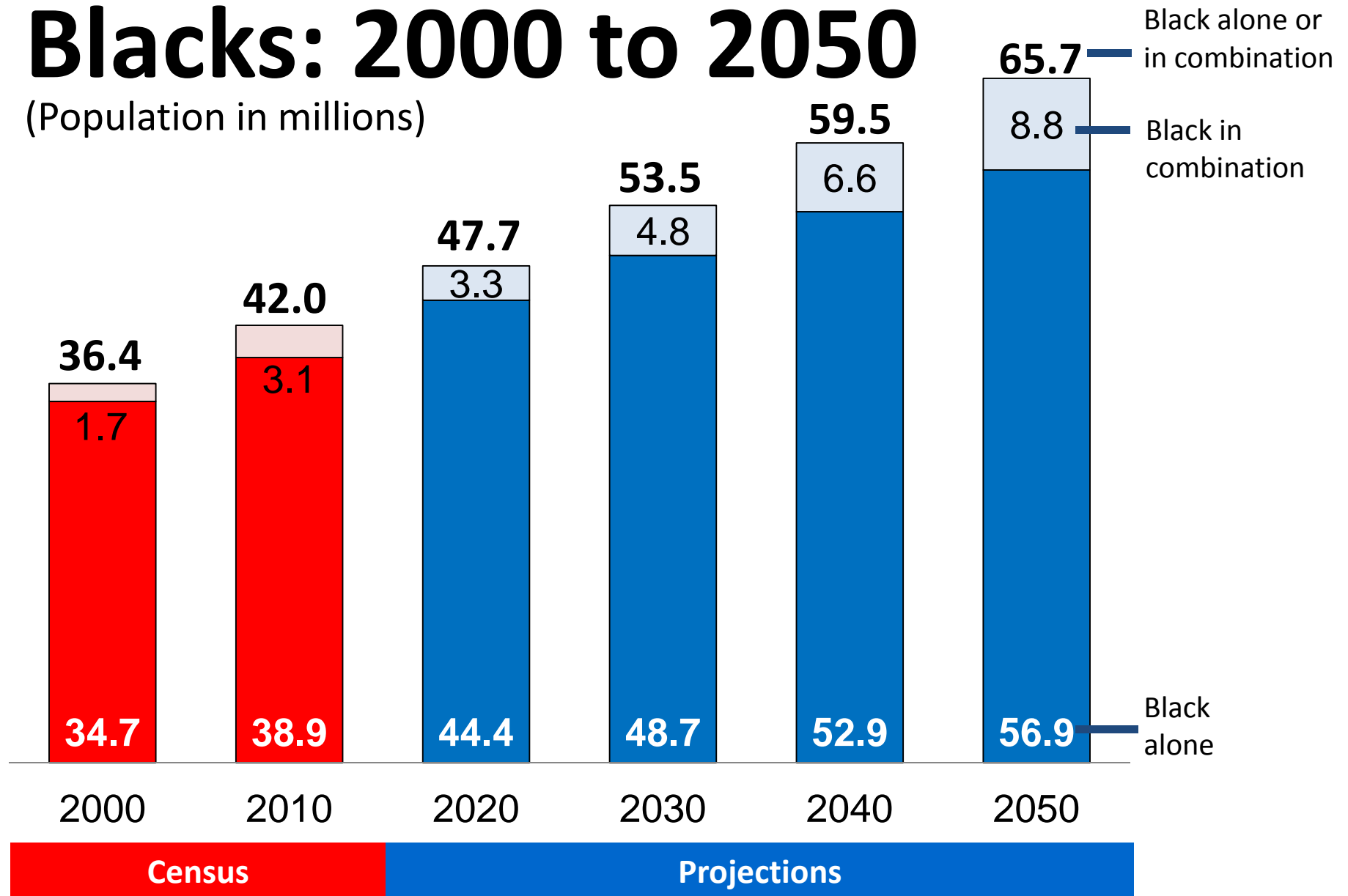
population estimate

14%

proportion of U.S. population

Blacks: 2000 to 2050

(Population in millions)

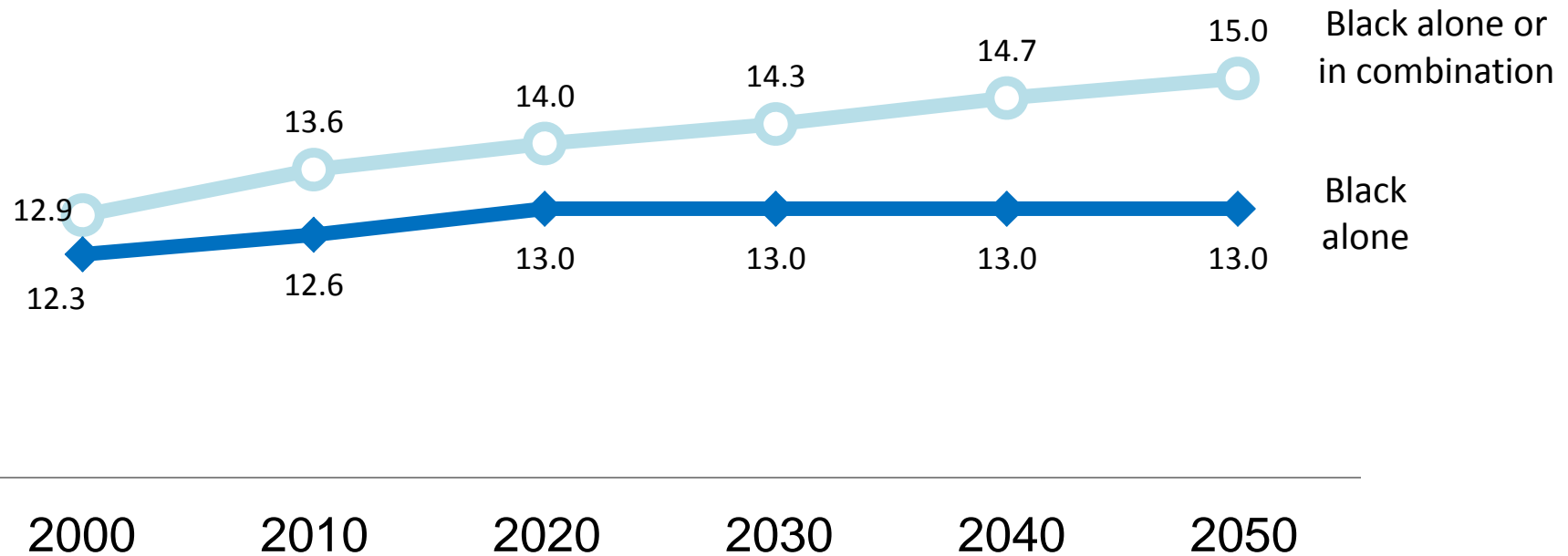


*Projected Population as of July 1

Sources: Census 2000 and 2010 Census; 2008 National Population Projections

Blacks: 2000 to 2050

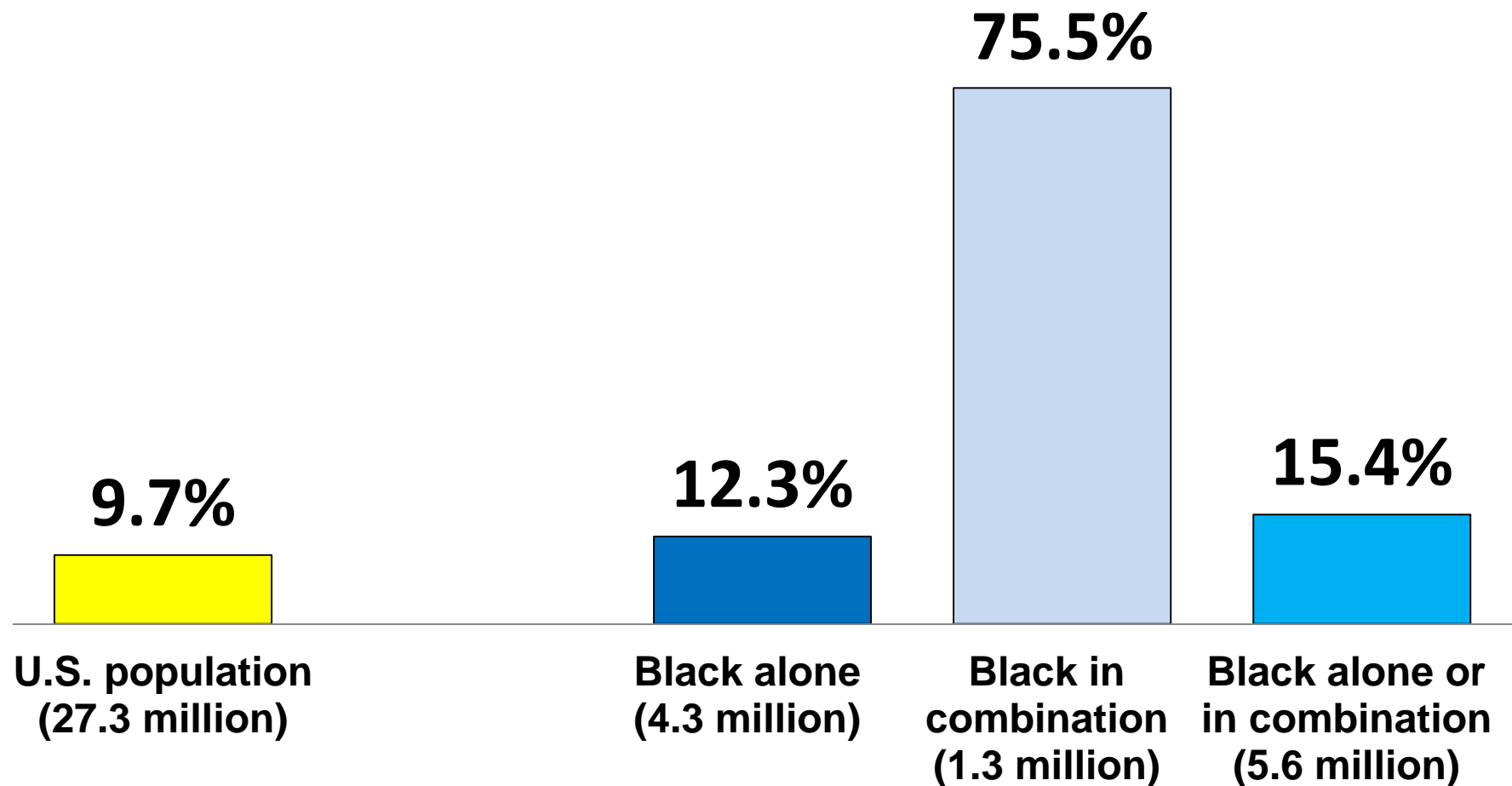
(Percent of U.S. population)



*Projected Population as of July 1

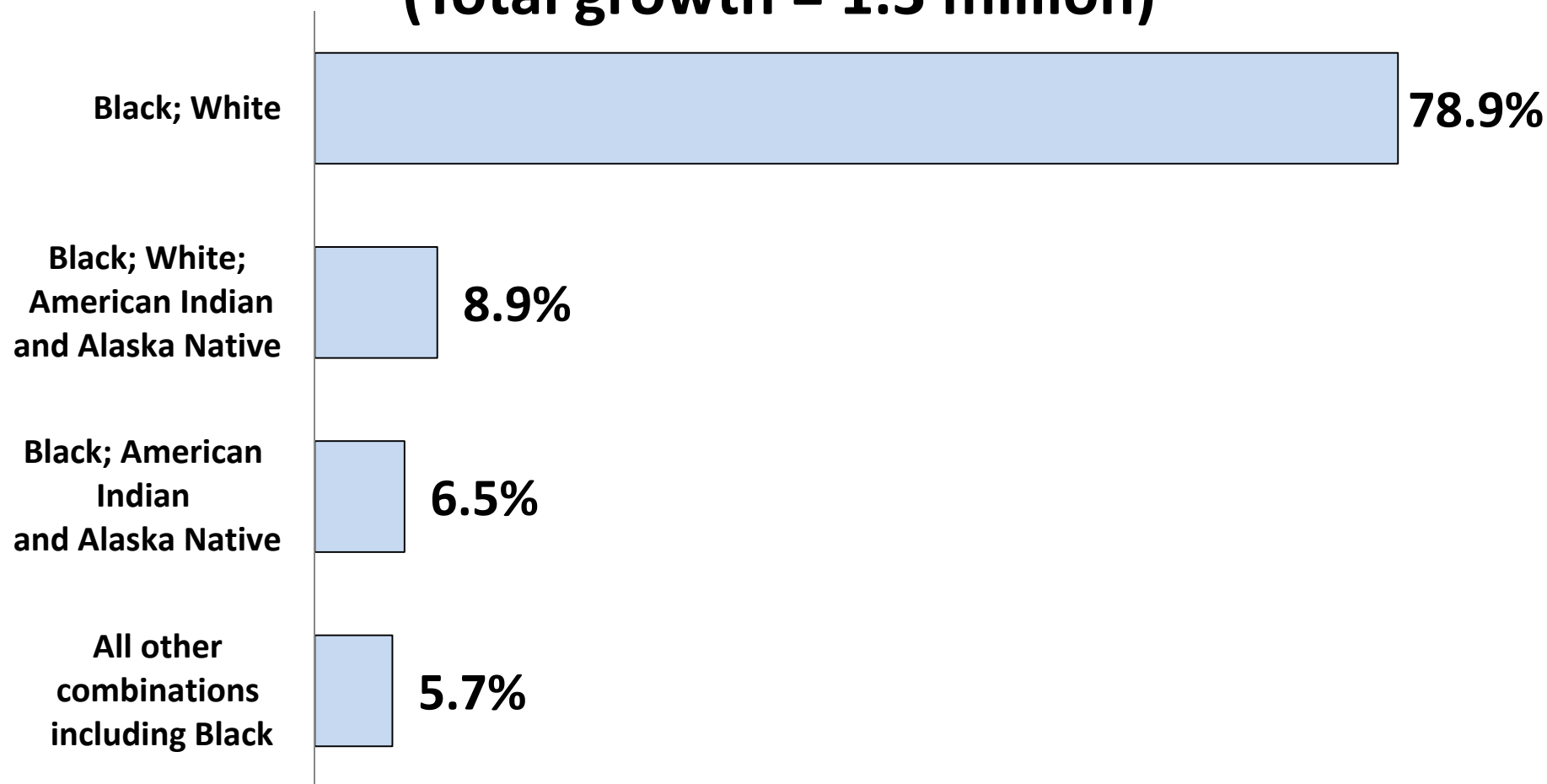
Sources: Census 2000 and 2010 Census; 2008 National Population Projections

Growth of U.S. Population and Black Population: 2000 to 2010

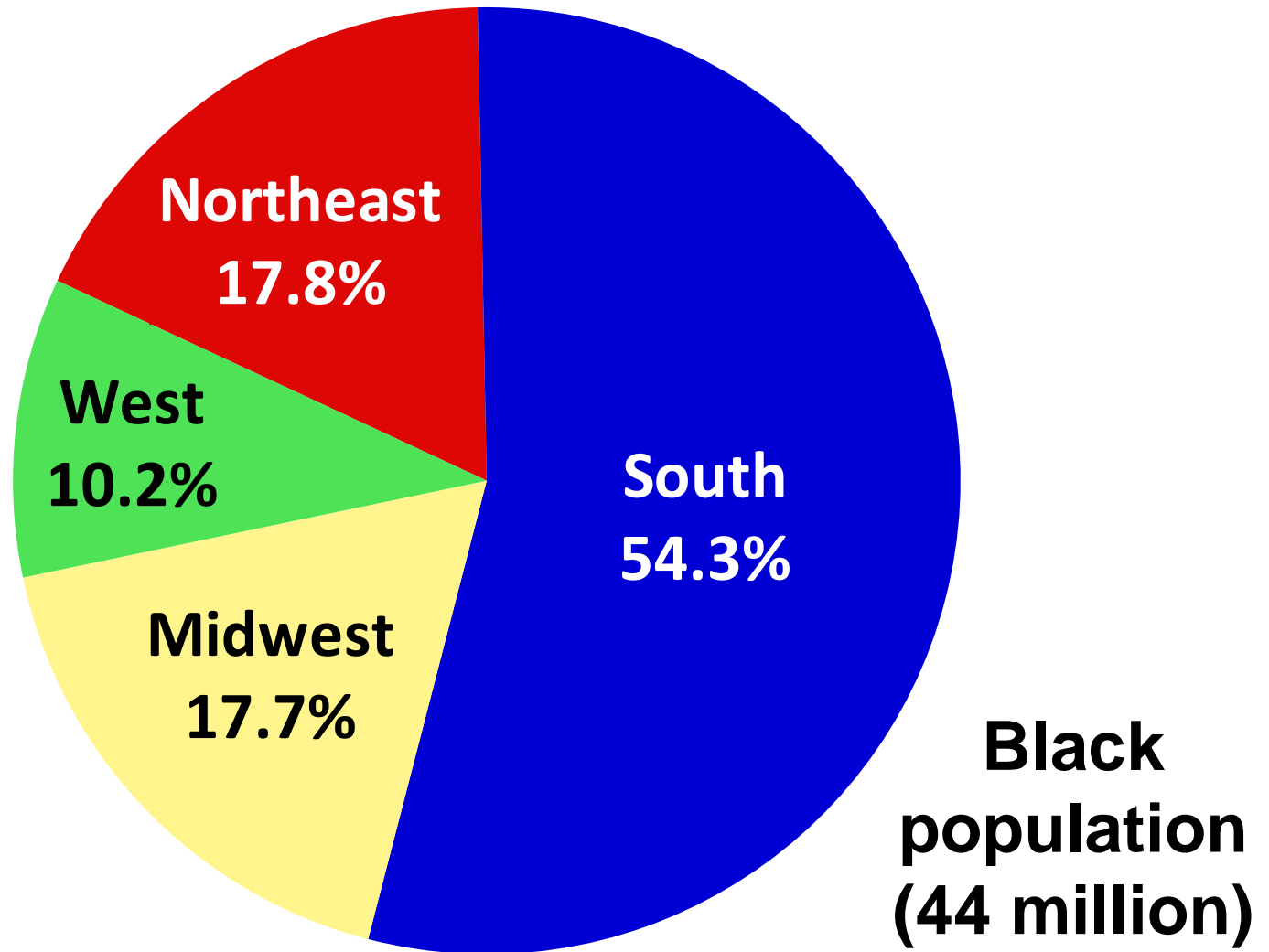


Share of Multiple-Race Black Growth: 2000 to 2010

(Total growth = 1.3 million)

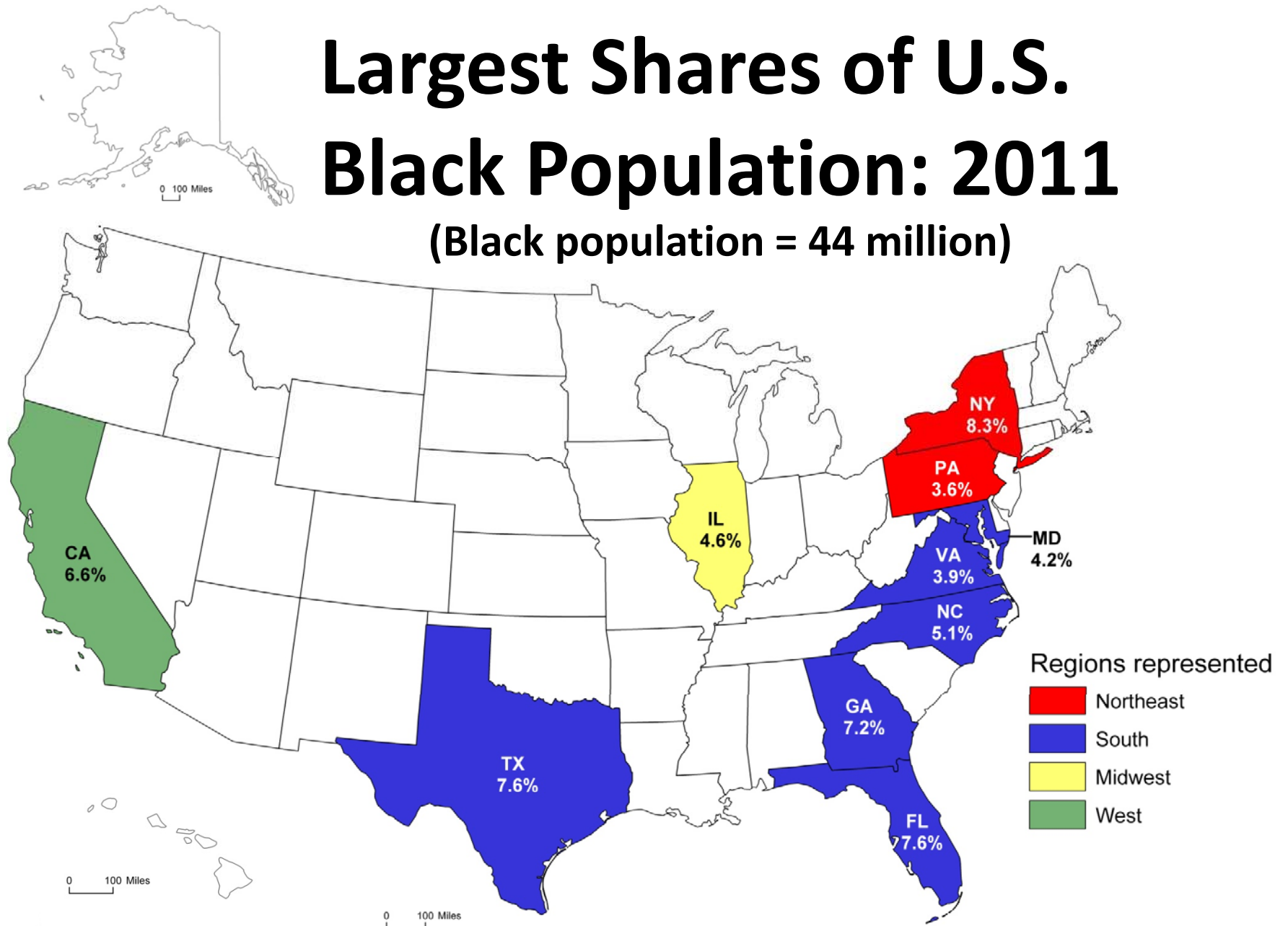


Blacks by Region: 2011

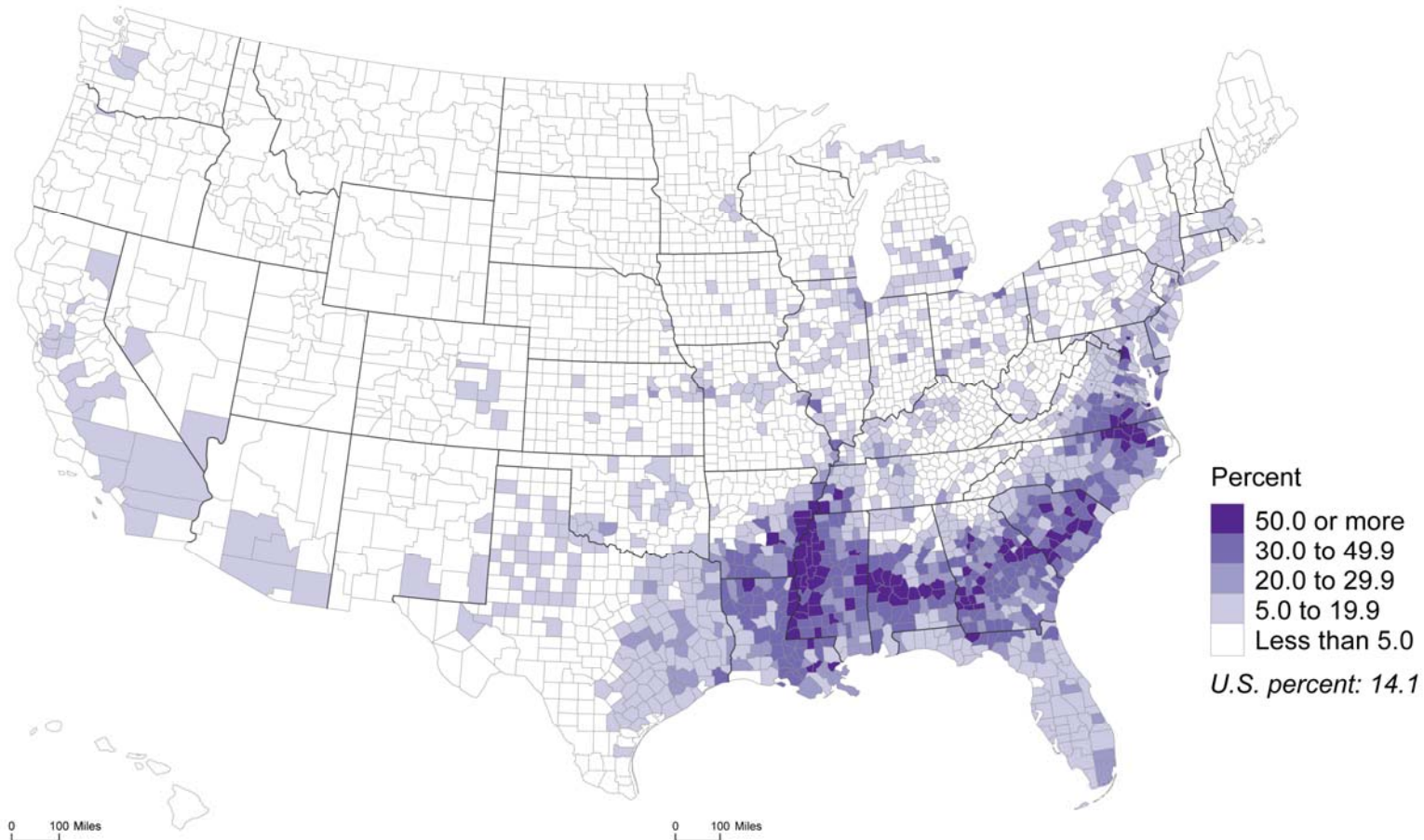


Largest Shares of U.S. Black Population: 2011

(Black population = 44 million)

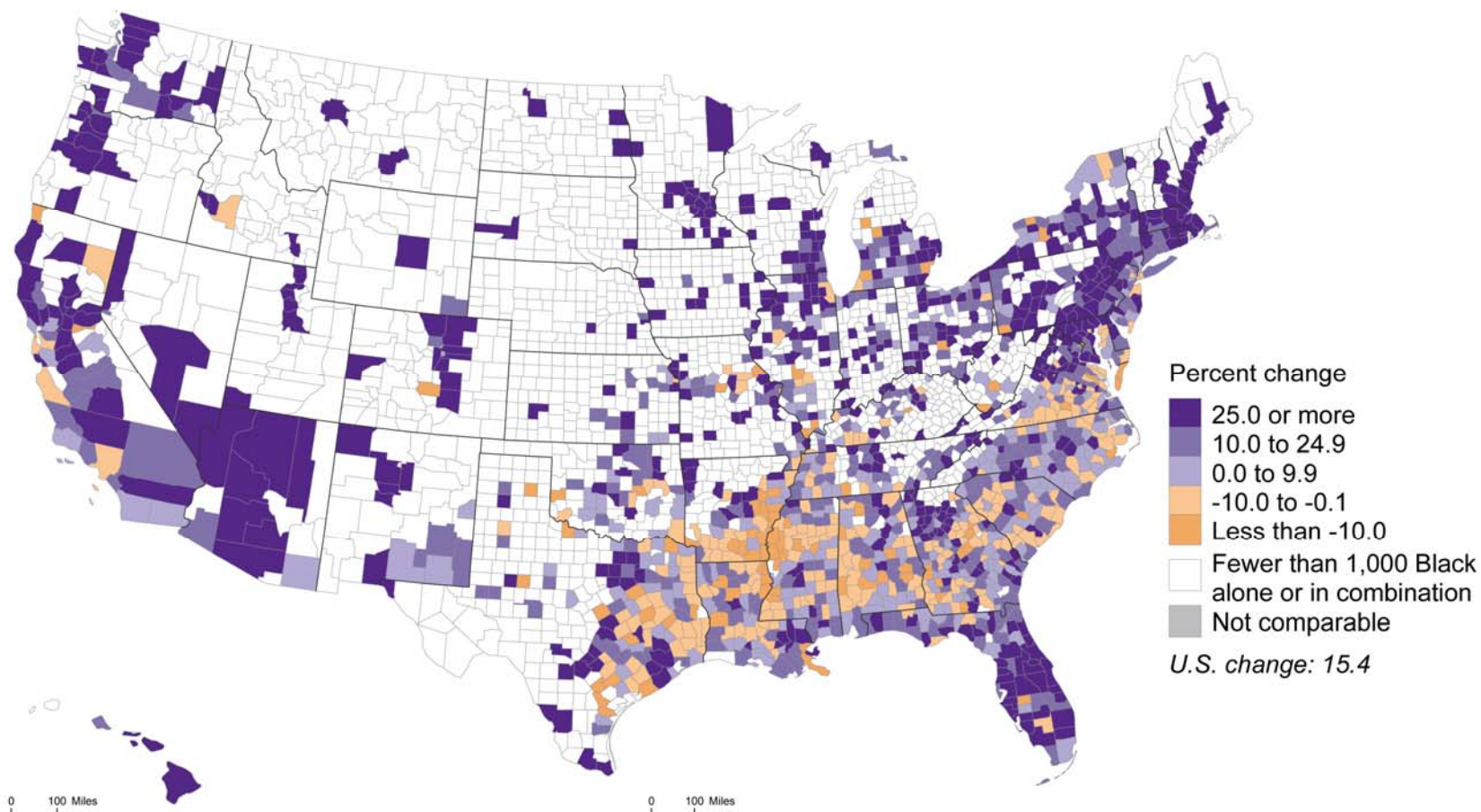


Blacks as a Percent of Total Population by County: 2011



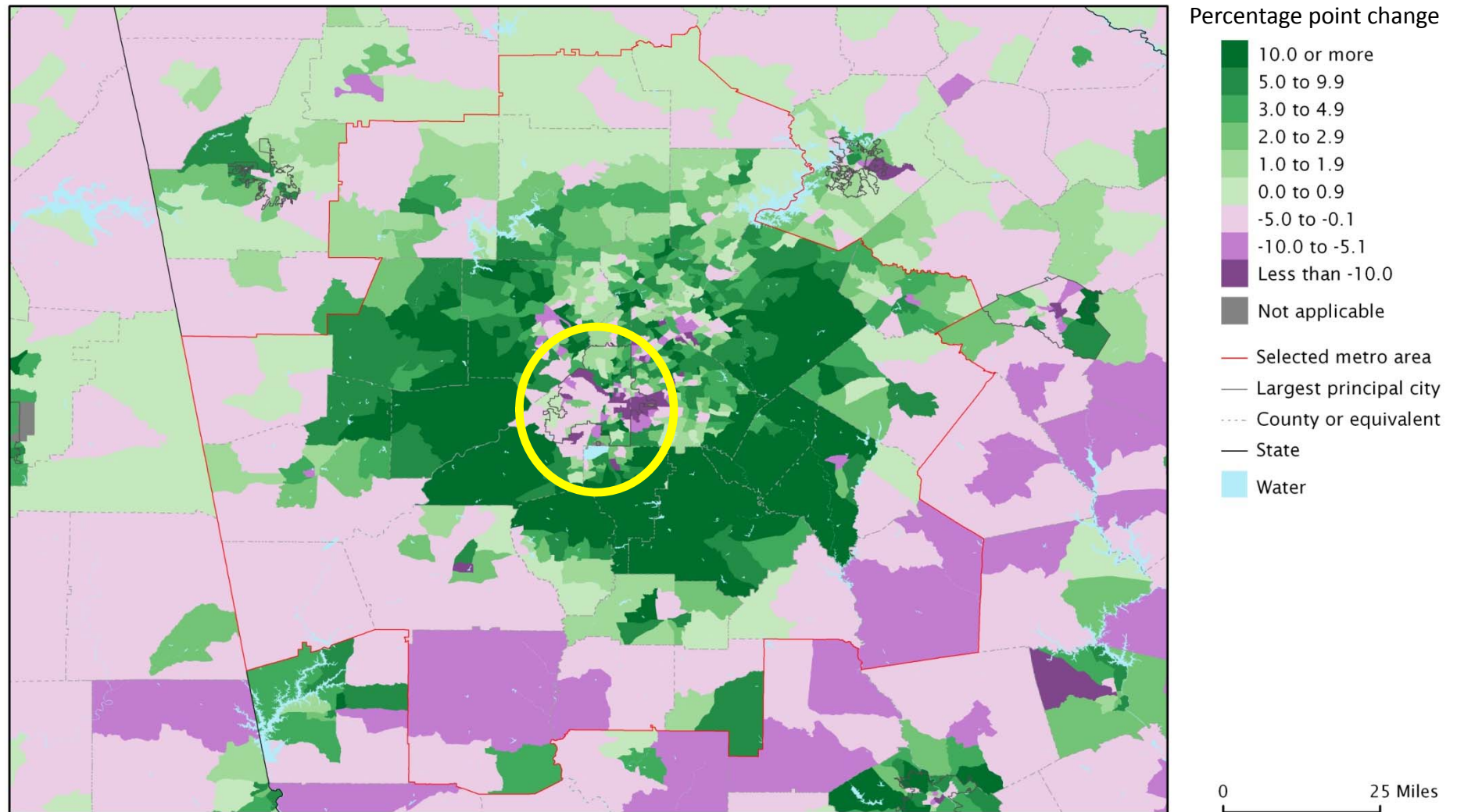


Percent Change of Blacks by County: 2000-2010



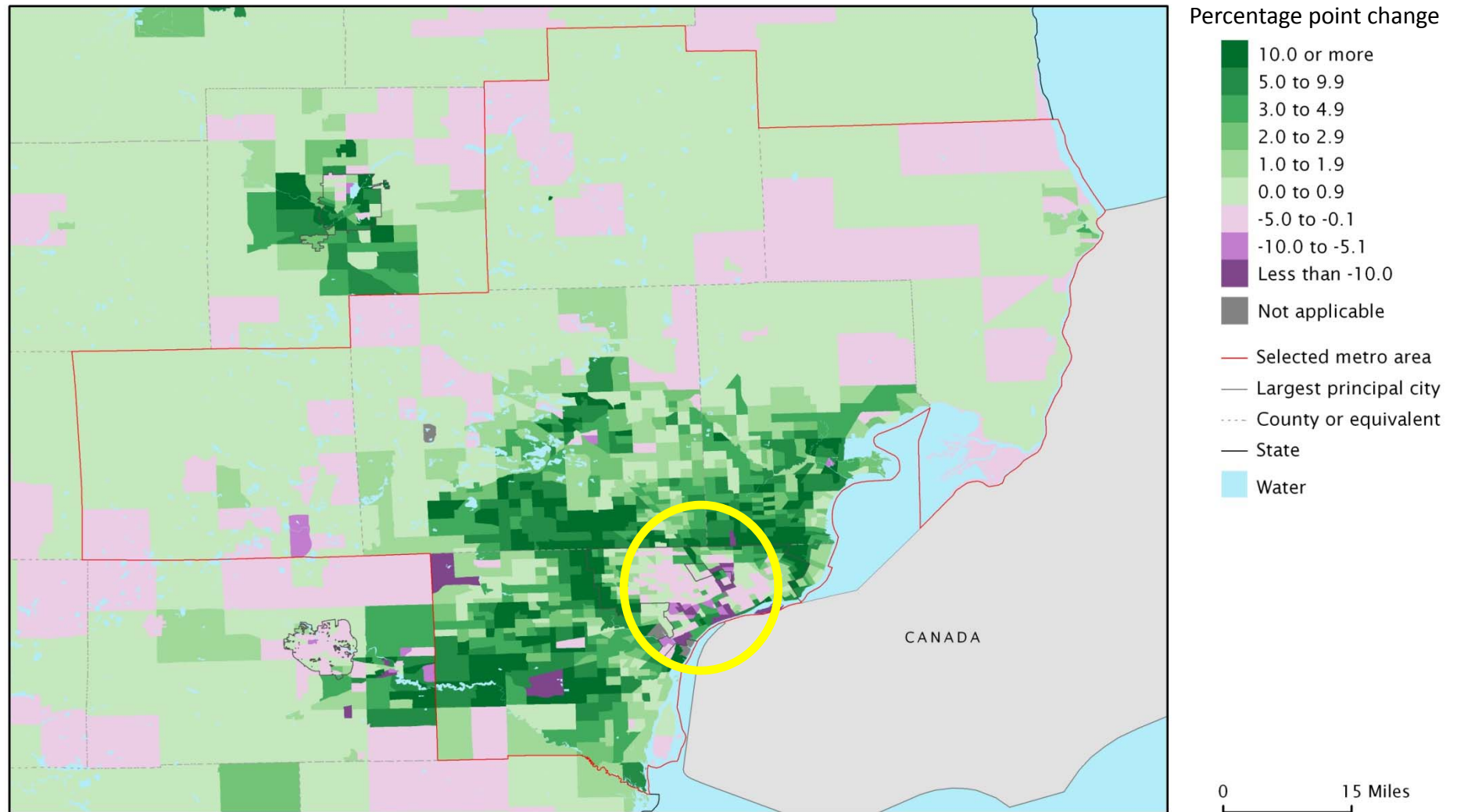
Atlanta-Sandy Springs-Marietta, GA Metro Area

Percentage Point Change in Black Population by Tract: 2000 to 2010



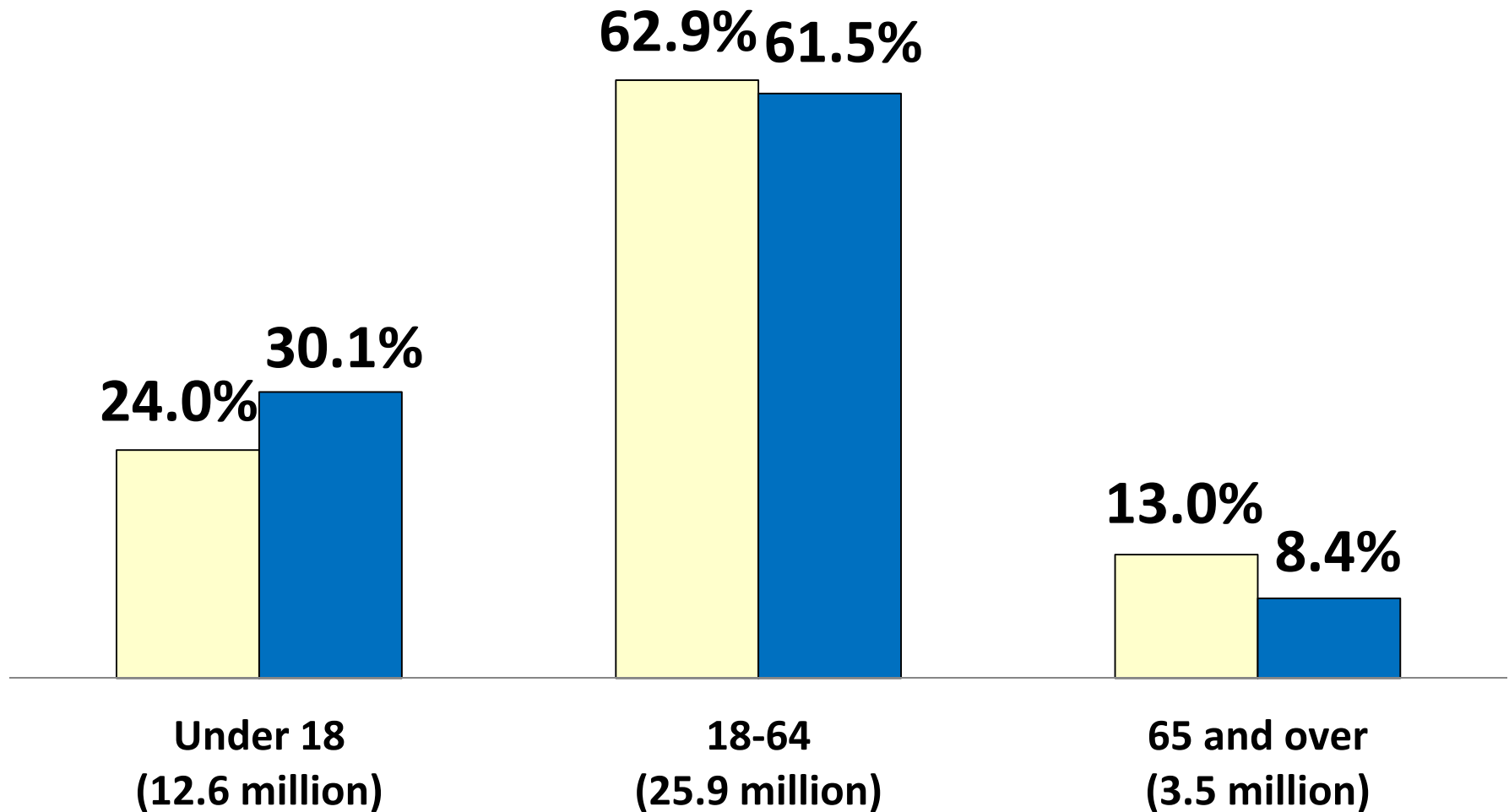
Detroit-Warren-Livonia, MI Metro Area

Percentage Point Change in Black Population by Tract: 2000 to 2010



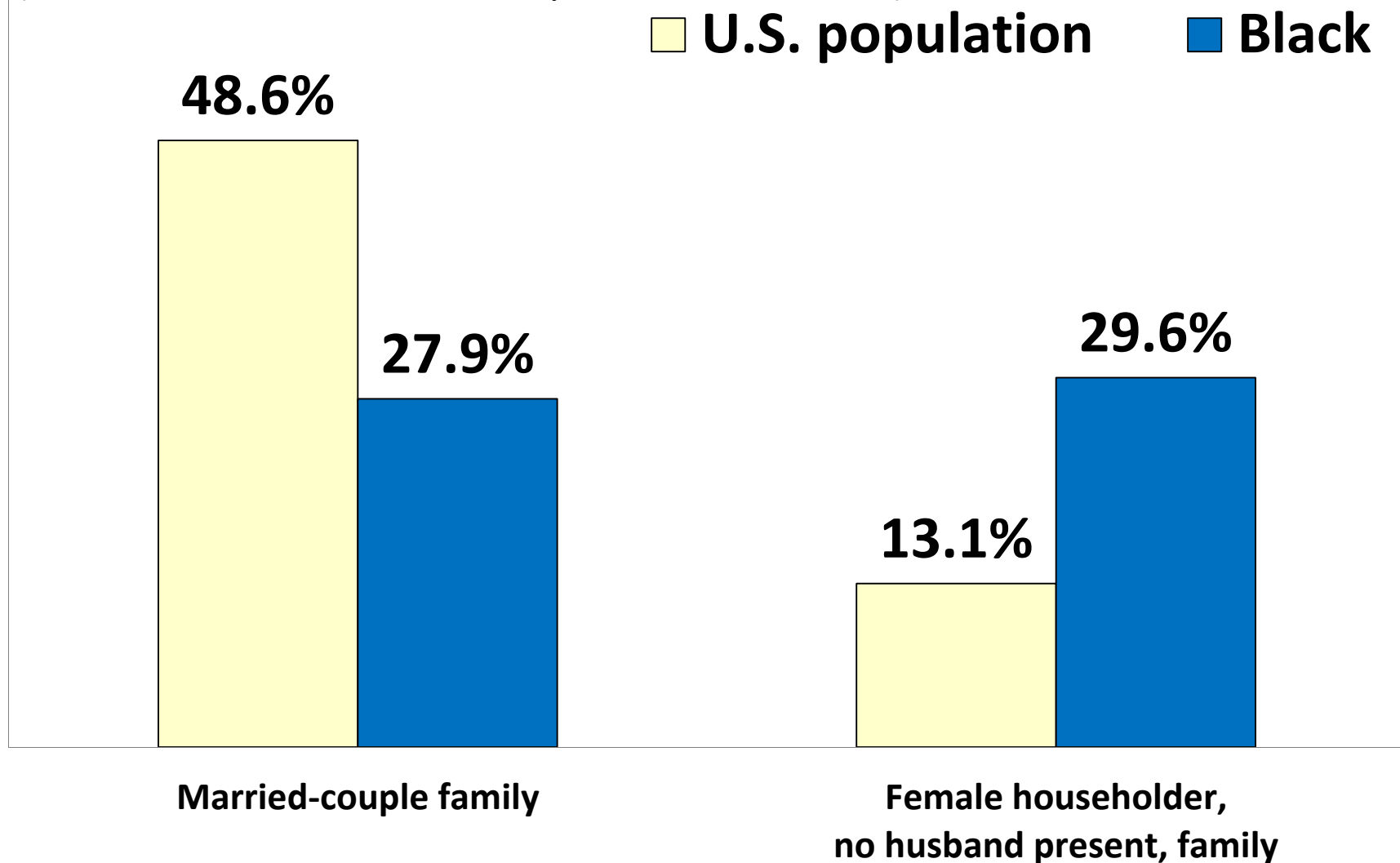
Black Population by Age: 2010

U.S. population Black



Black Households by Type: 2010

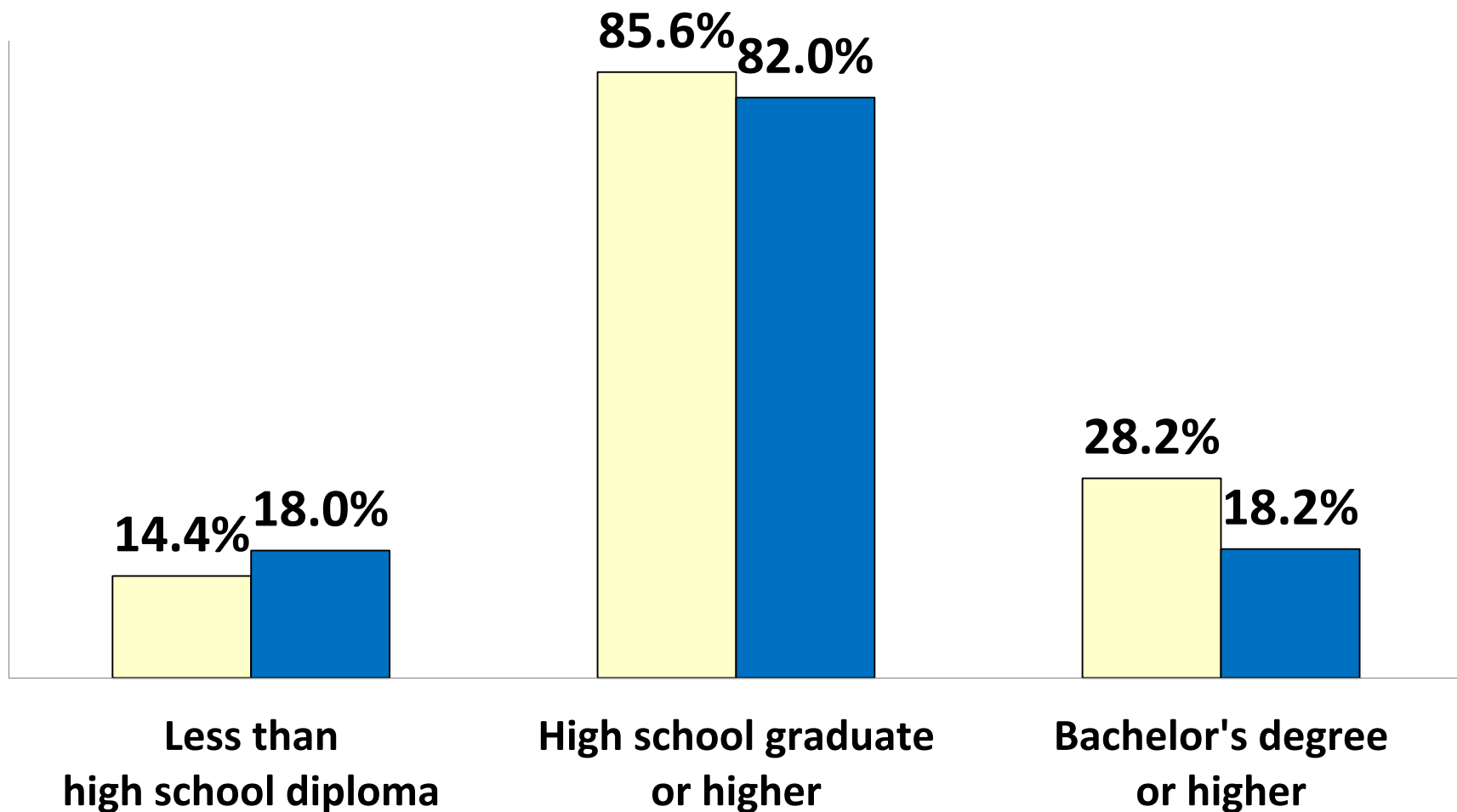
(Percent. Households classified by race of householder)



Educational Attainment: 2010

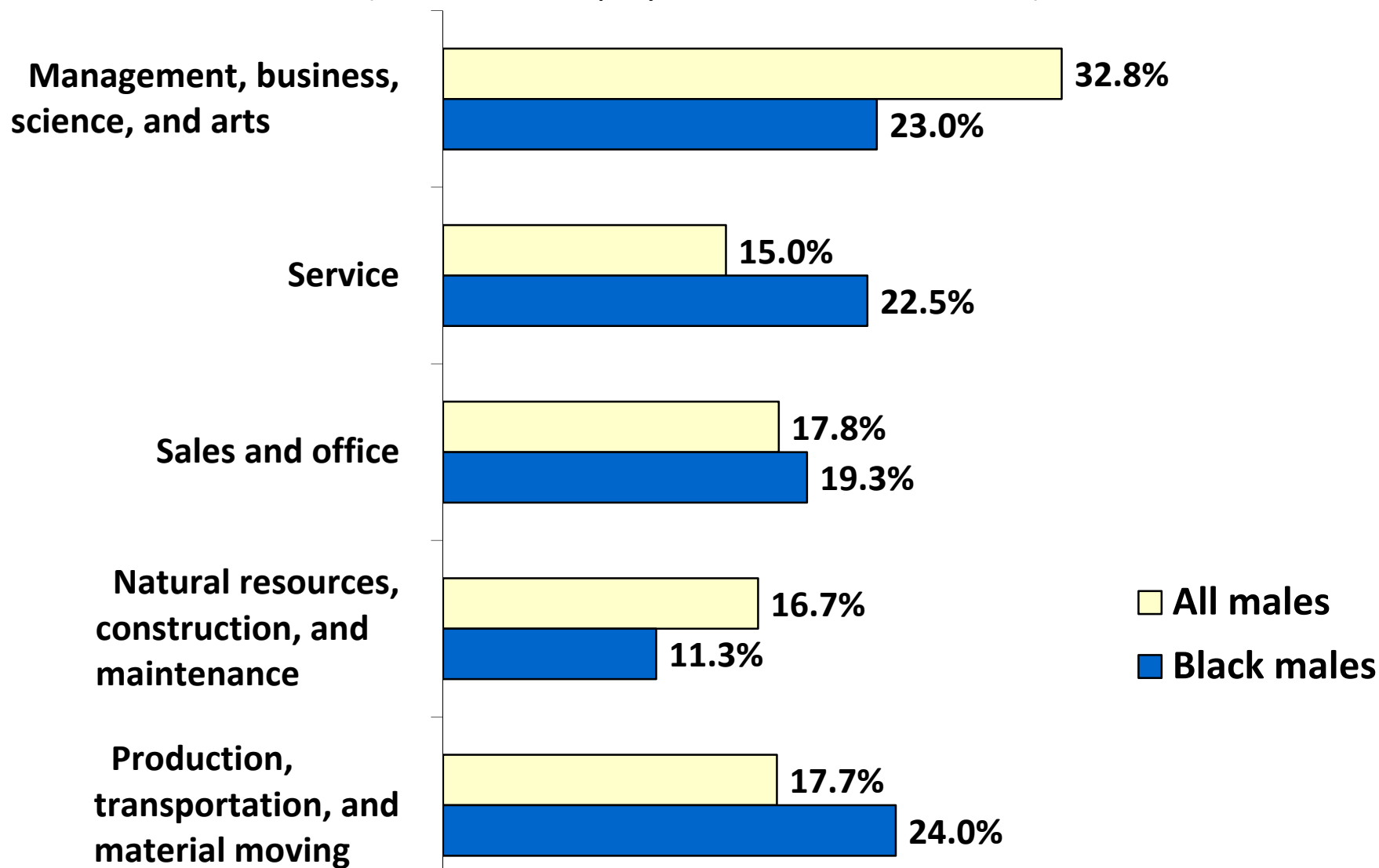
(Population 25 years and older)

■ U.S. population ■ Black



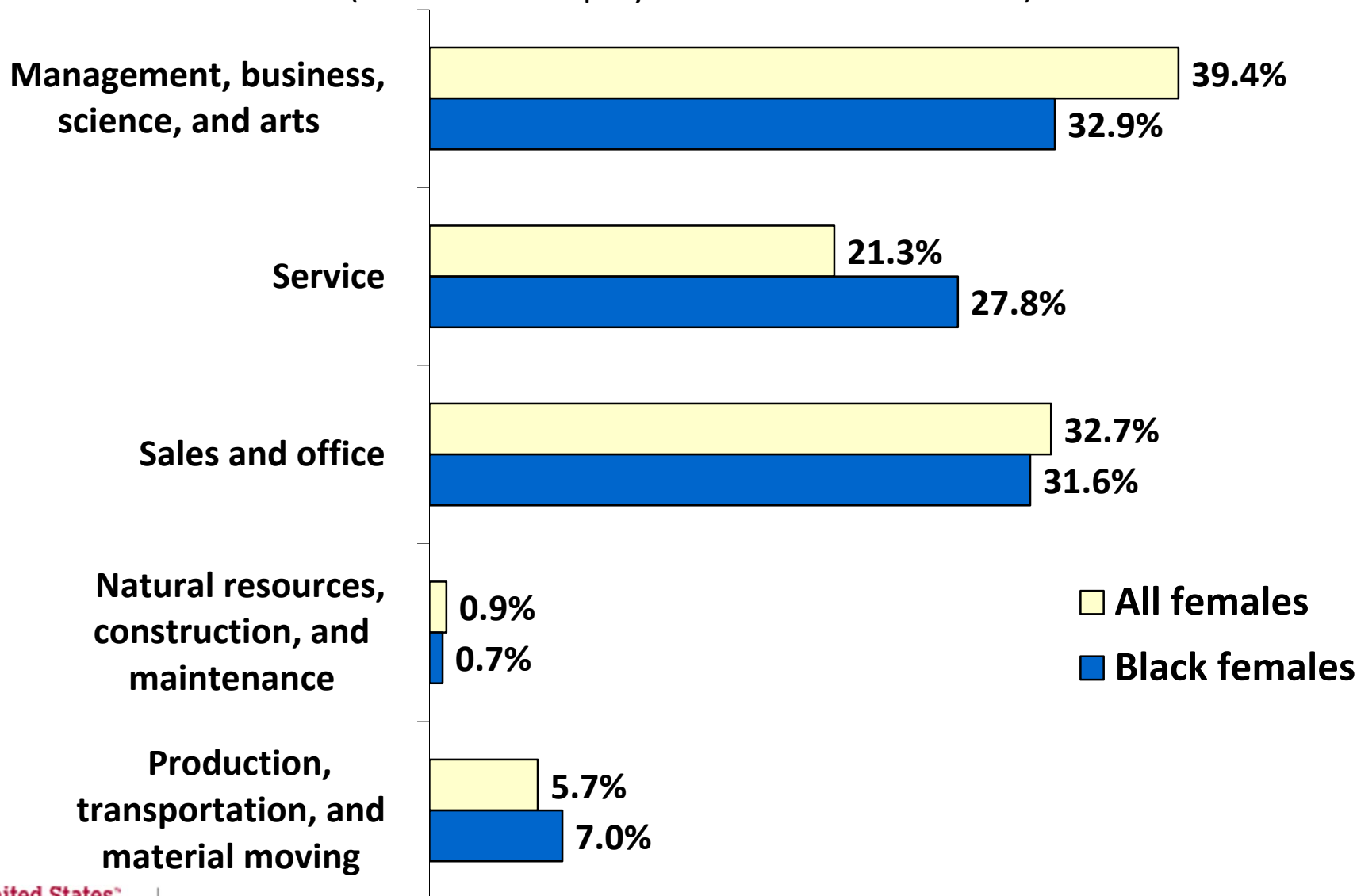
Occupation of Males: 2010

(For civilian employed workers 16 and older)



Occupation of Females: 2010

(For civilian employed workers 16 and older)

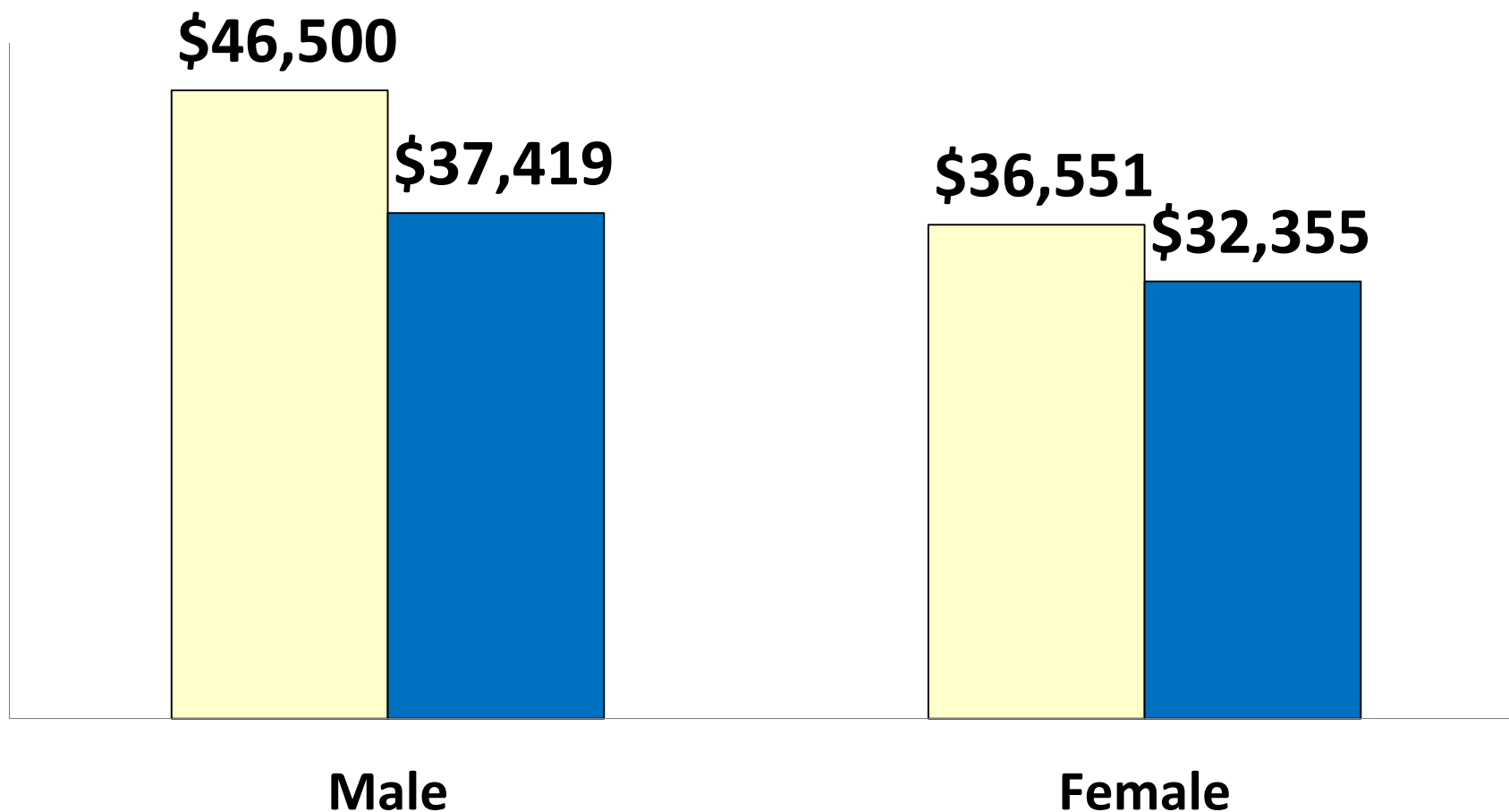


Median Earnings by Sex: 2010

(For employed, full-time, year-round workers 16 and older.

In 2010 inflation-adjusted dollars)

■ U.S. population ■ Black



Selected World Region of Birth for Foreign-Born Blacks

