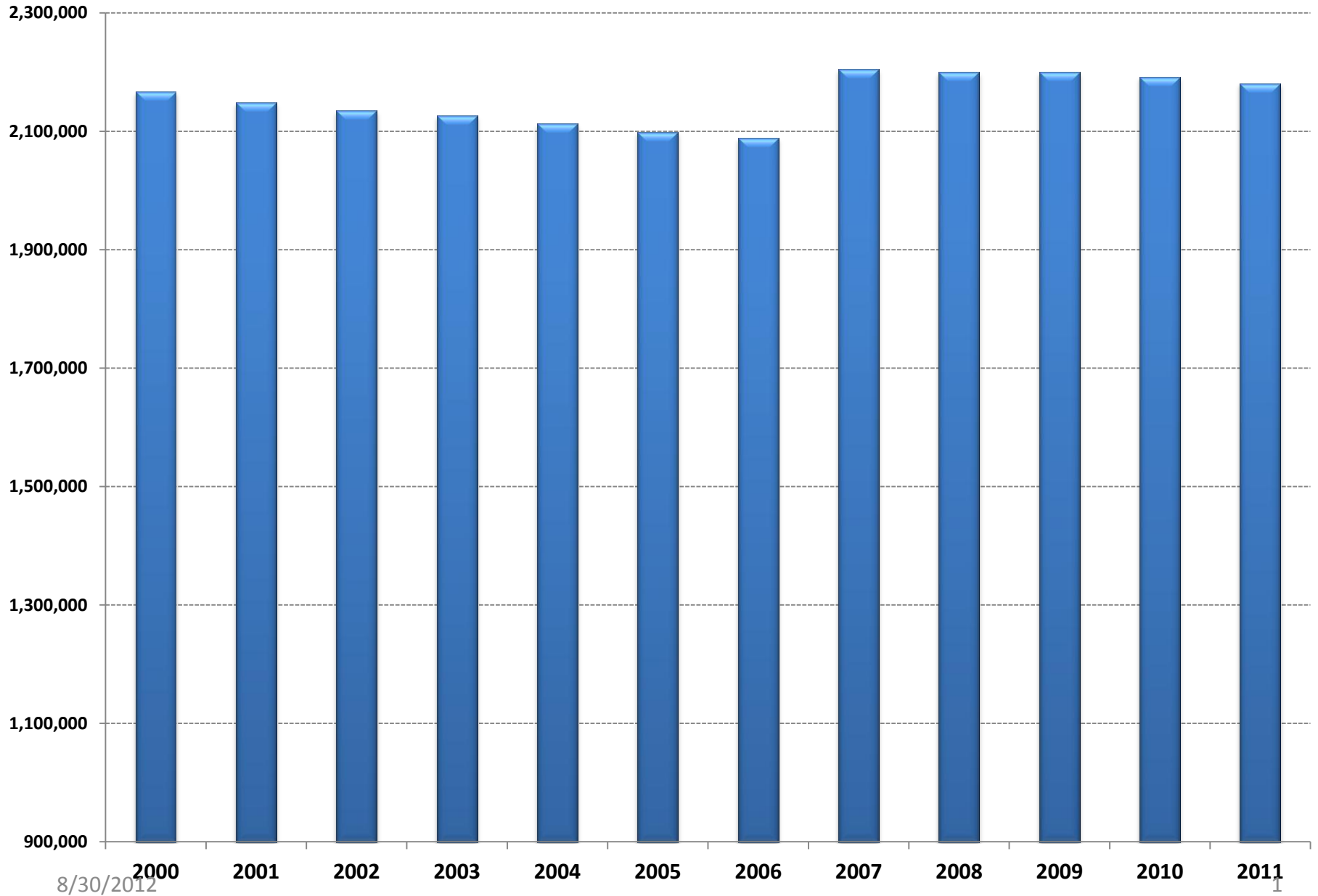




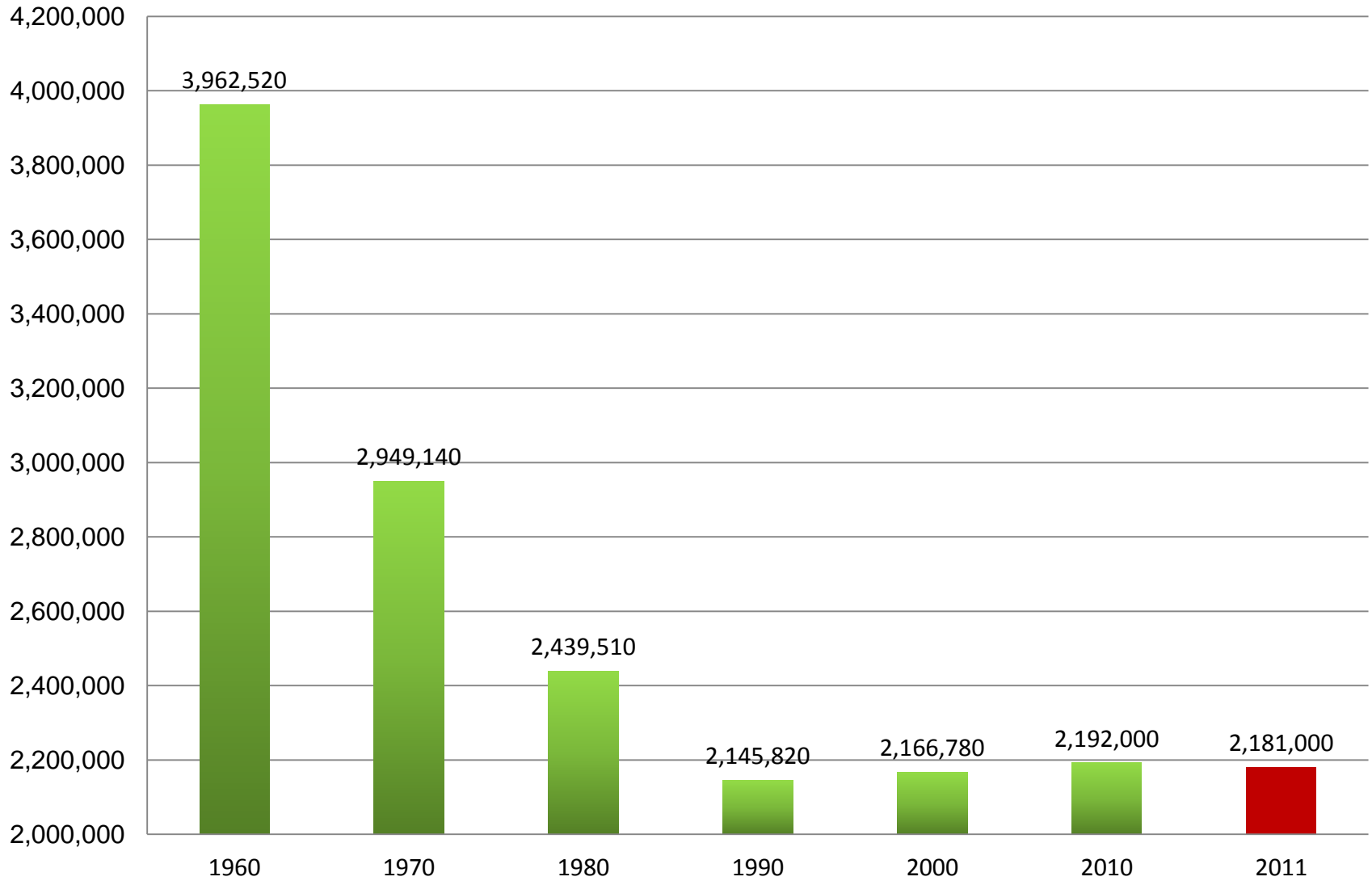
United States Farm Numbers 2000-2011



8/30/2012



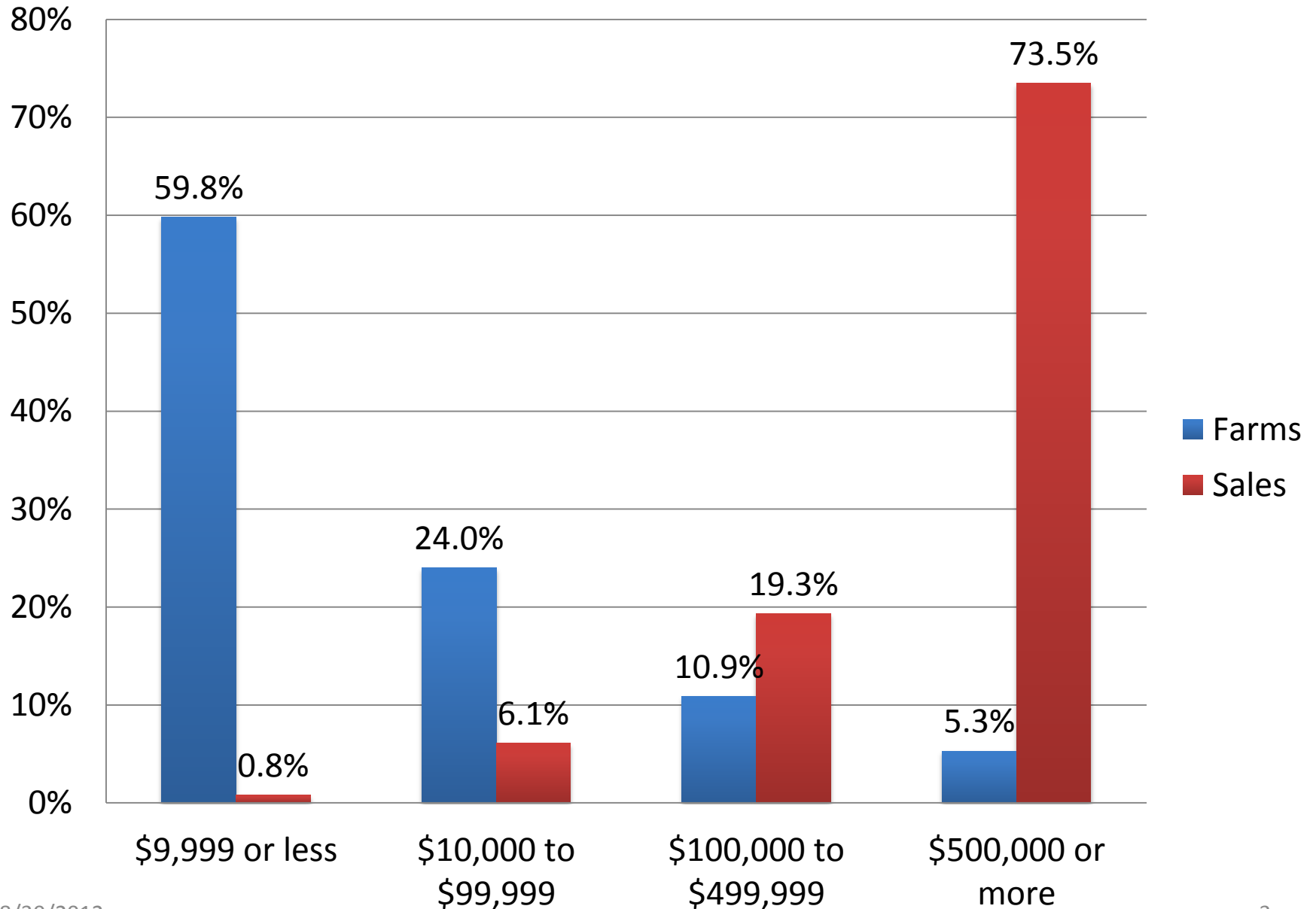
Number of Farms in the United States



8/30/2012

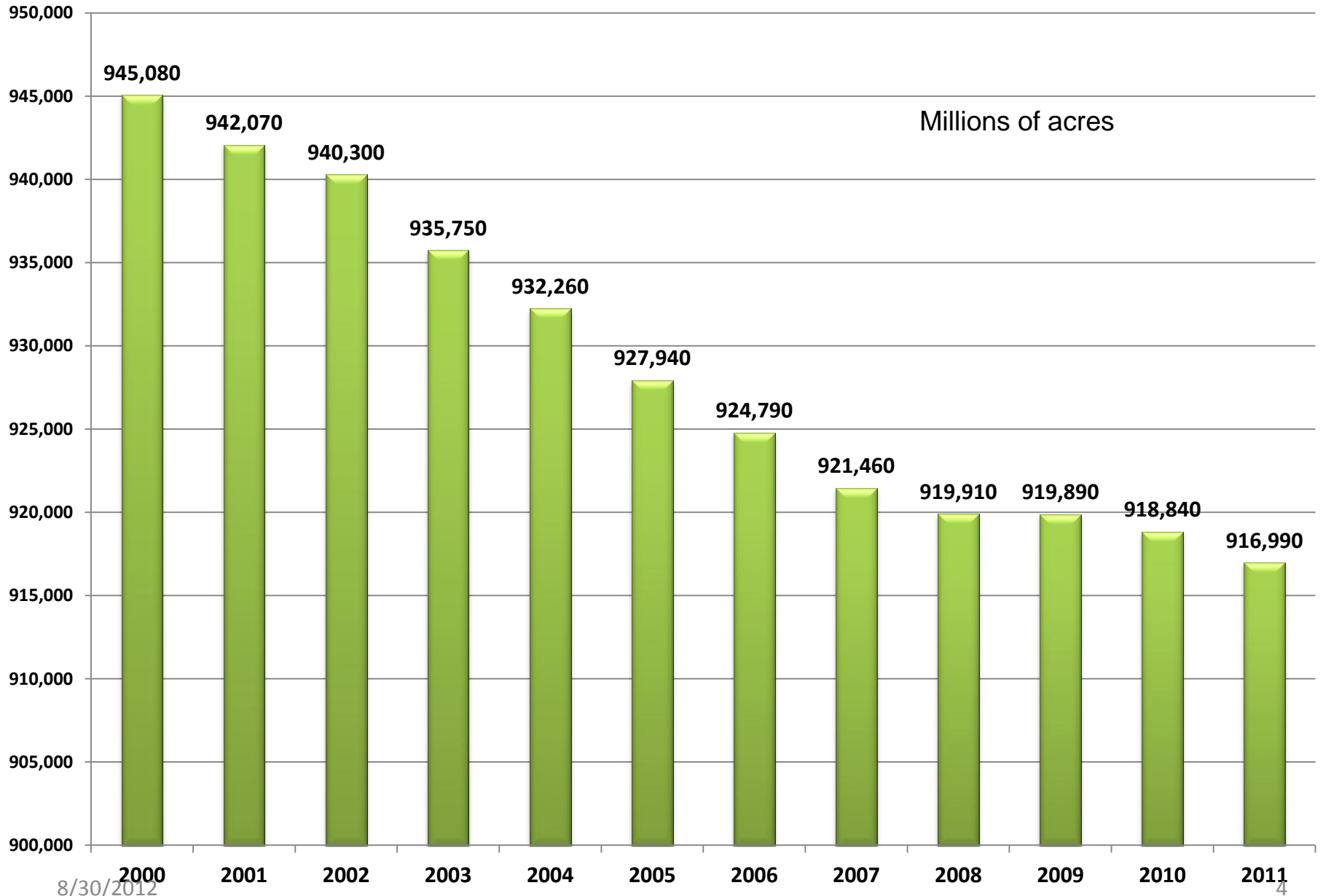


Percentage of Farms and Sales by Economic Class, 2007

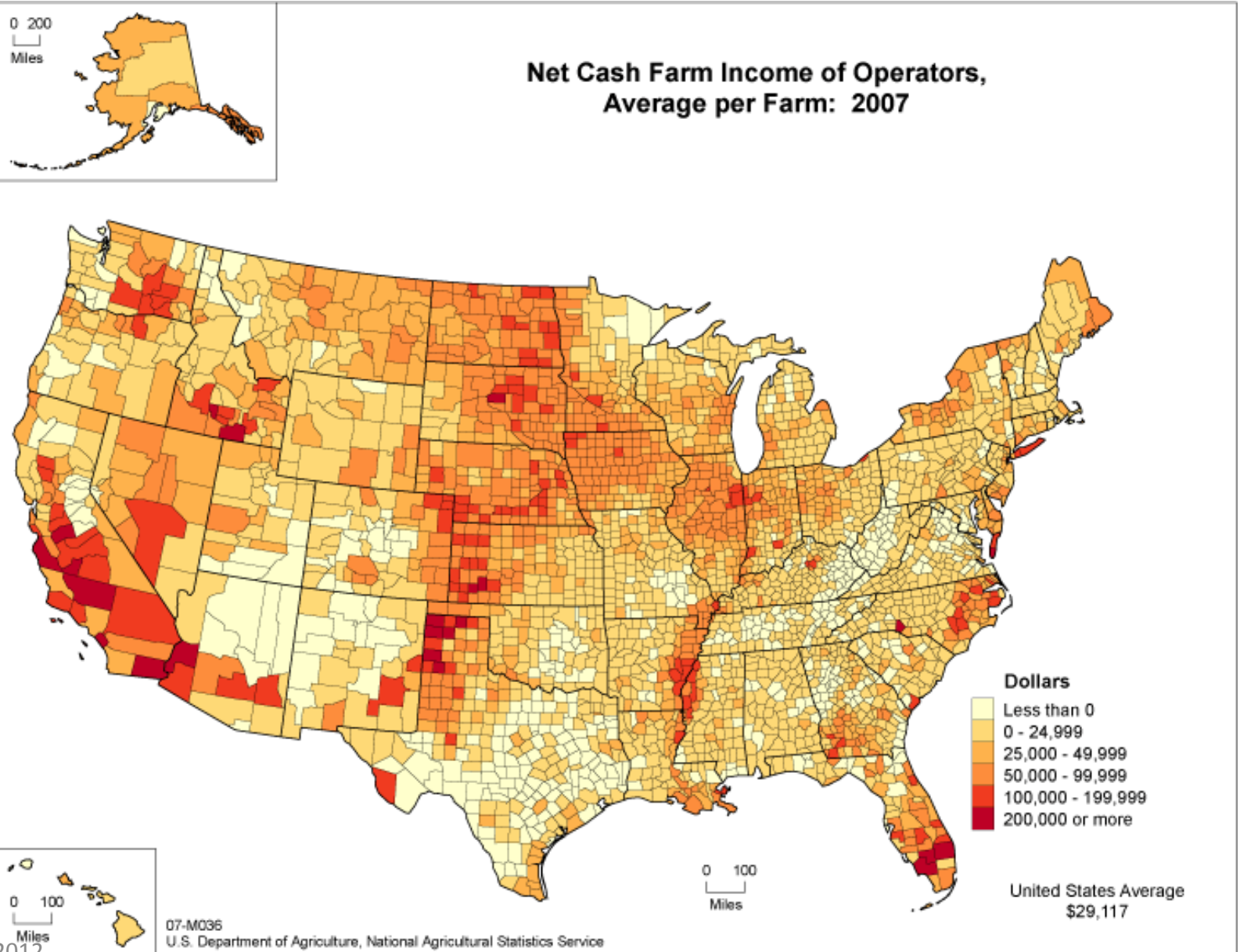




Total Land in Farms in the United States, 2000-2011

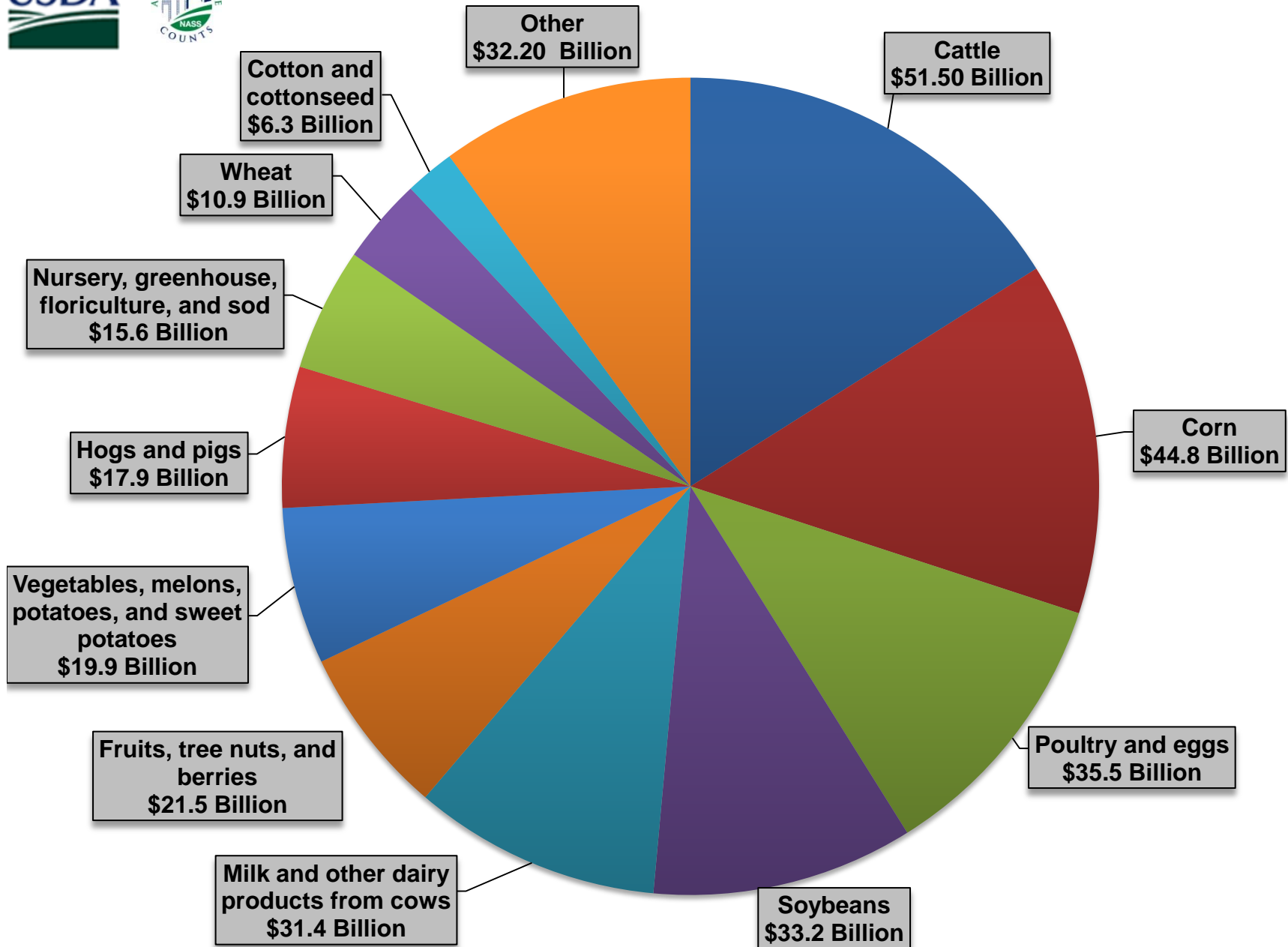


8/30/2012





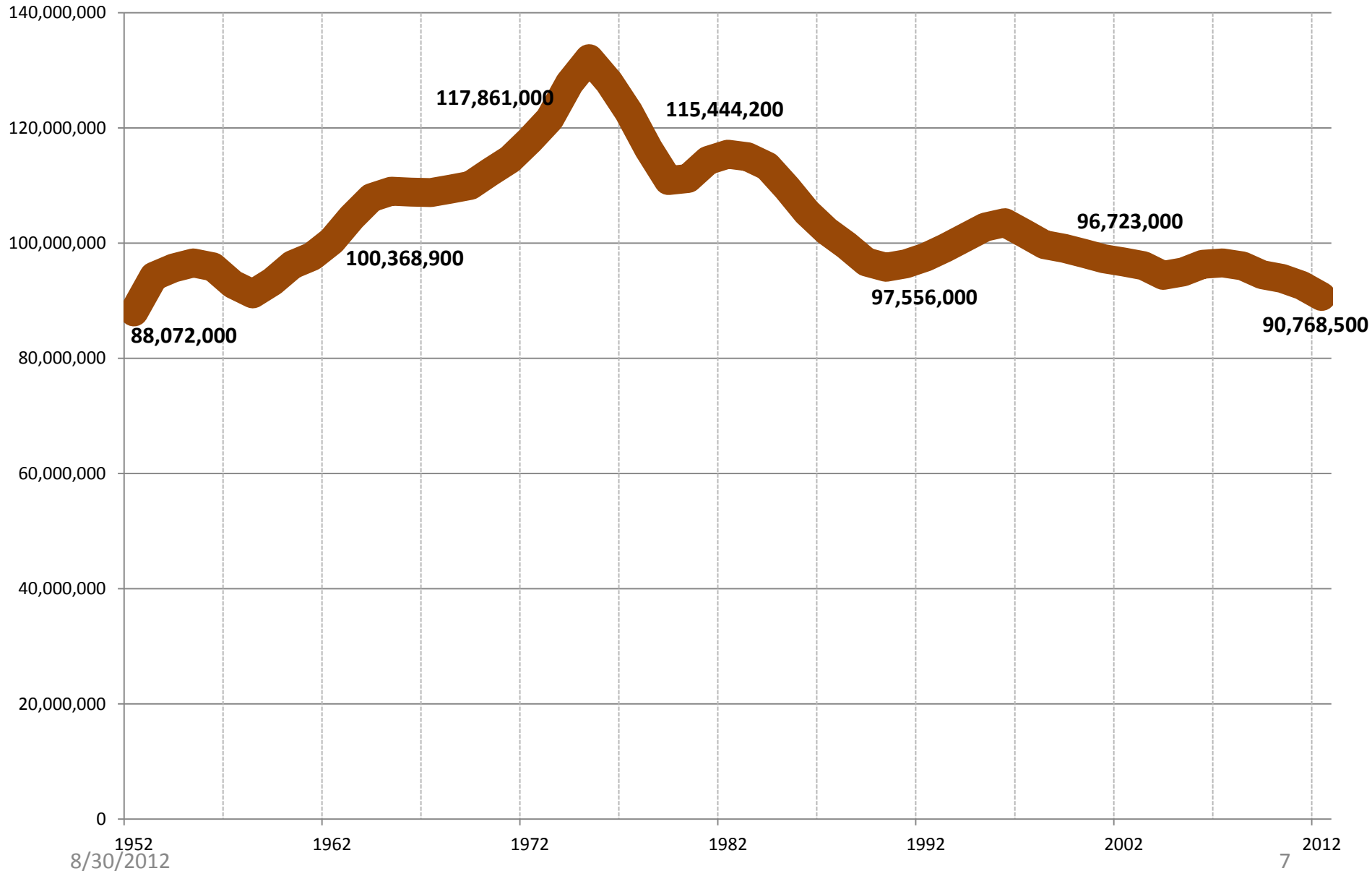
U.S. Farm Products by Cash Receipts , 2010



8/30/2012



U.S. Cattle Inventory



8/30/2012

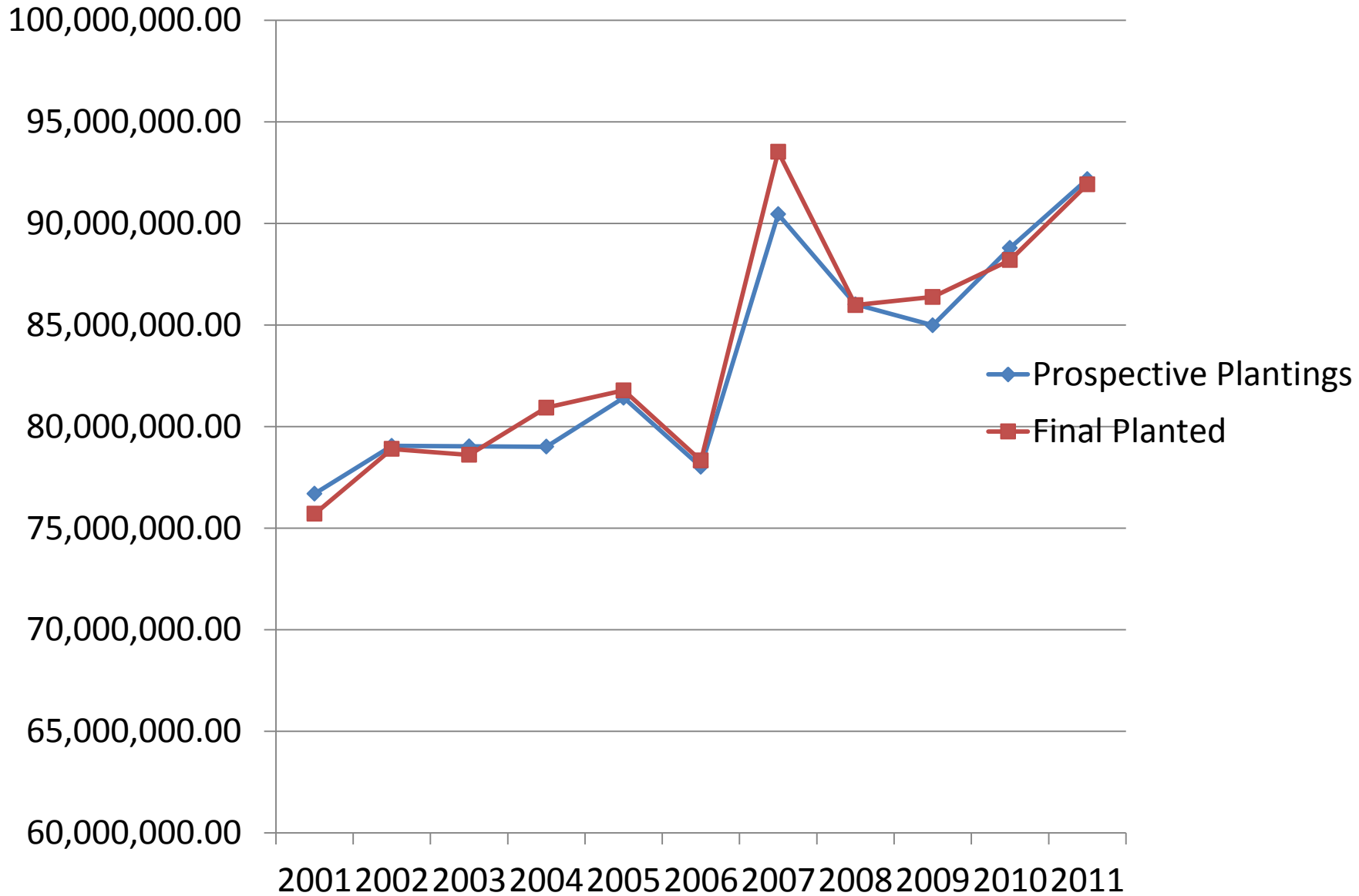


March 30 Prospective Plantings Report Survey Overview

Prospective Plantings Report	March 30 Release Date
First Survey Based Crop Estimates for the Year	Survey 85,000 farmers for what they plan to plant
Data Collection	February 28 – March 20
Collection Methods	Phone, mail, Internet, personal interview
Information Collected	Acres to be planted, crop stocks
Crops	Corn, Soybeans, Wheat,
Crop Stocks	Amount of grains and oilseeds stored on-farm



Corn Acreage: Prospective Plantings and Final Planted



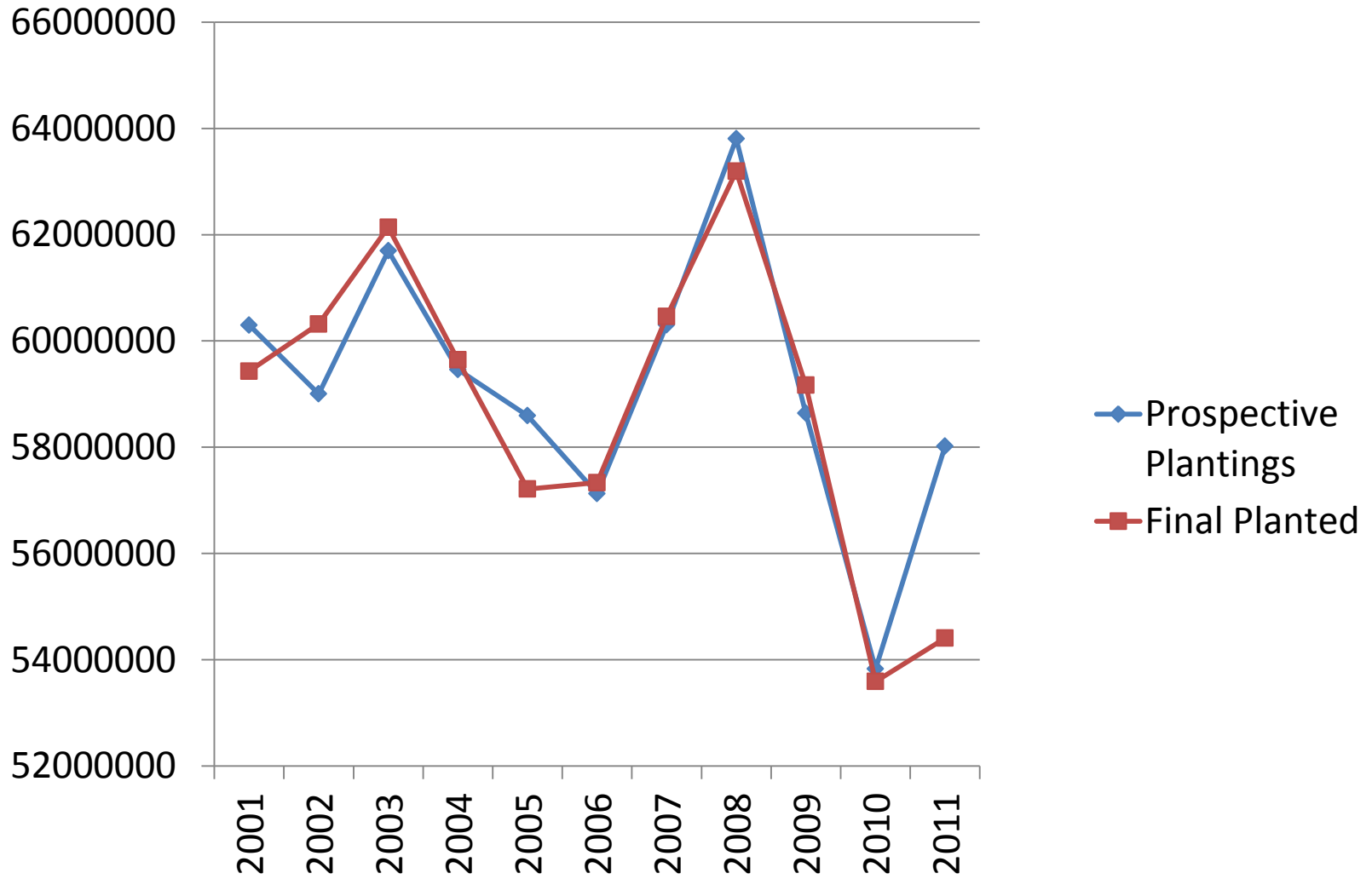


Soybean Acreage: Prospective Plantings and Final Planted



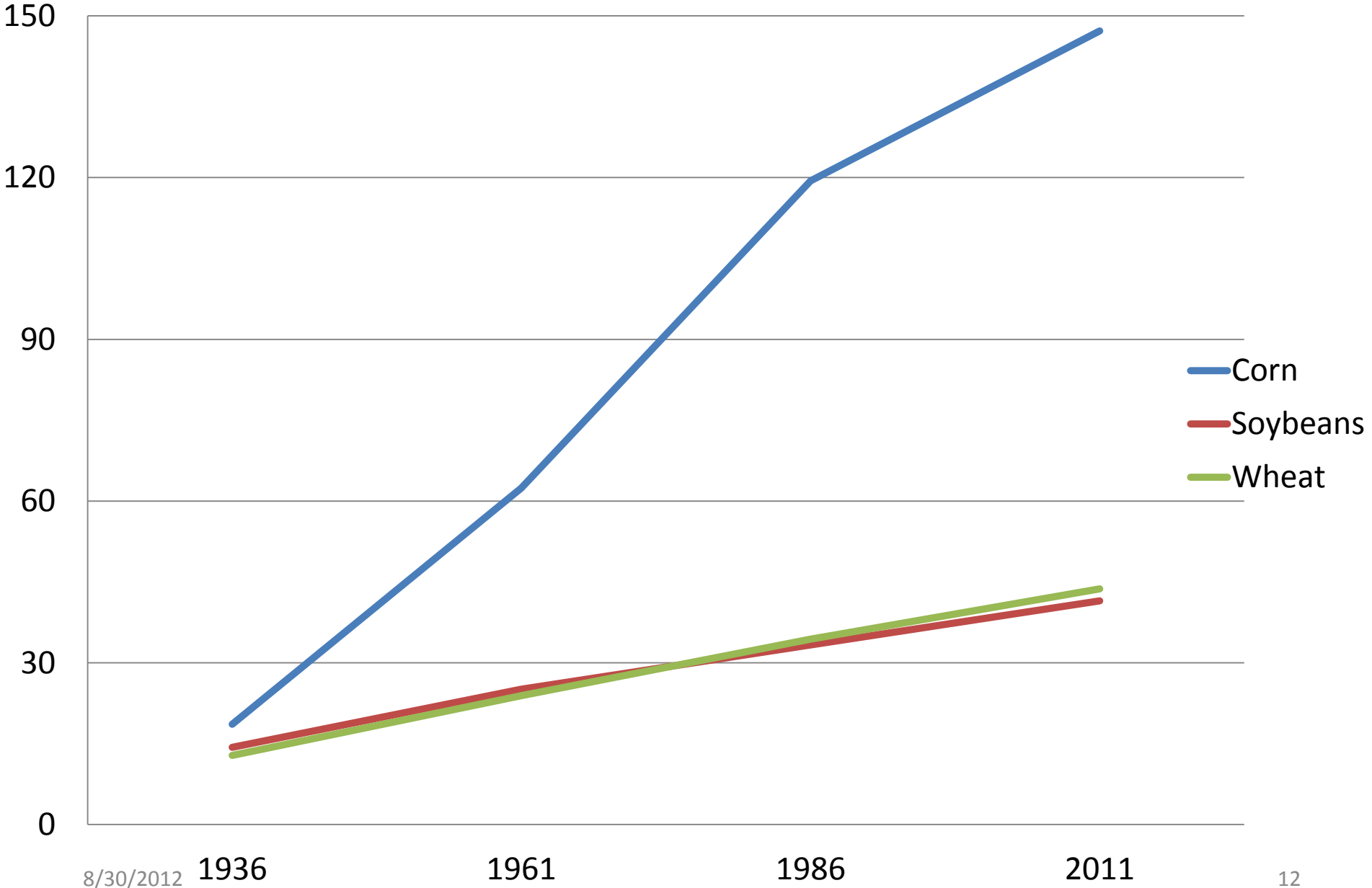


Wheat Acreage: Prospective Plantings and Final Planted





Crop Yield: Bushels Per Acre



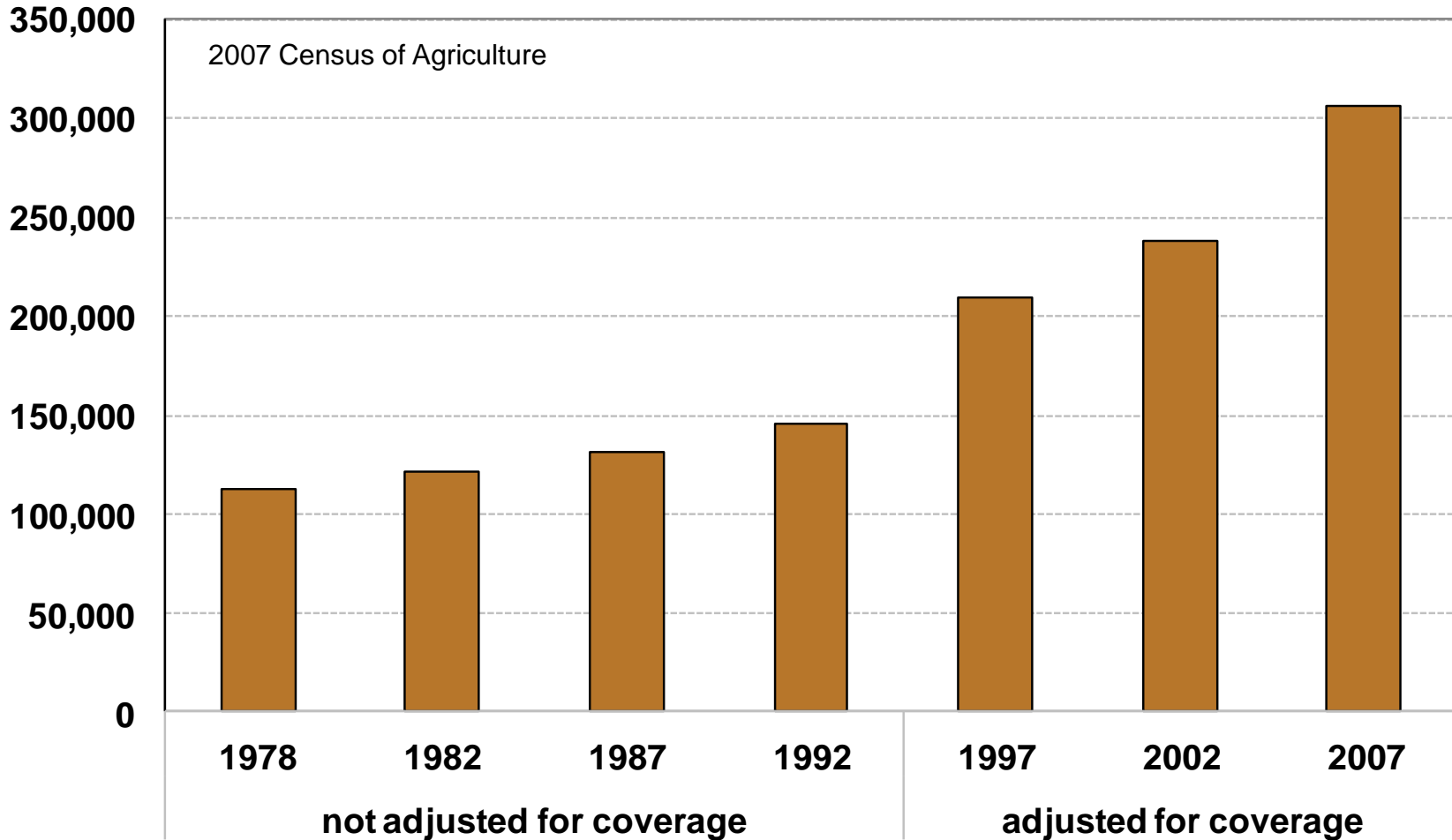


Farm and Farmer Characteristics

All farms	Percent
Operator occupation: Farming	39
Operator occupation: Something else	45
Operator occupation: Retired	16
Operator education: Less than high school	9
Operator education: Completed high school	42
Operator education: Some college	26
Operator education: Completed 4 years college or more	24
Operator hours worked annually on farm: Less than 500	27
Operator hours worked annually on farm: 500 to 999	22
Operator hours worked annually on farm: 1,000 to 1,999	26
Operator hours worked annually on farm: 2,000 or more	25

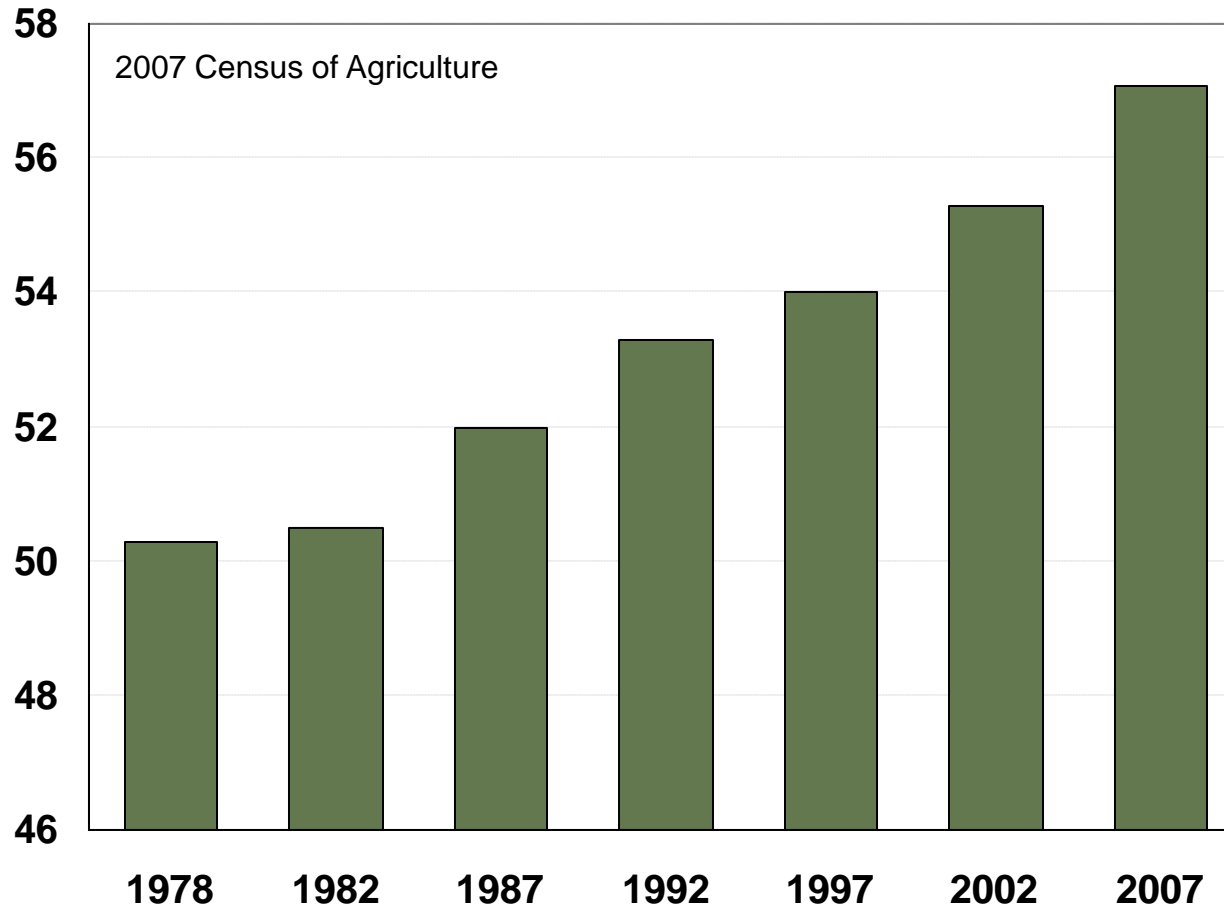


Farms with a Female Principal Operator



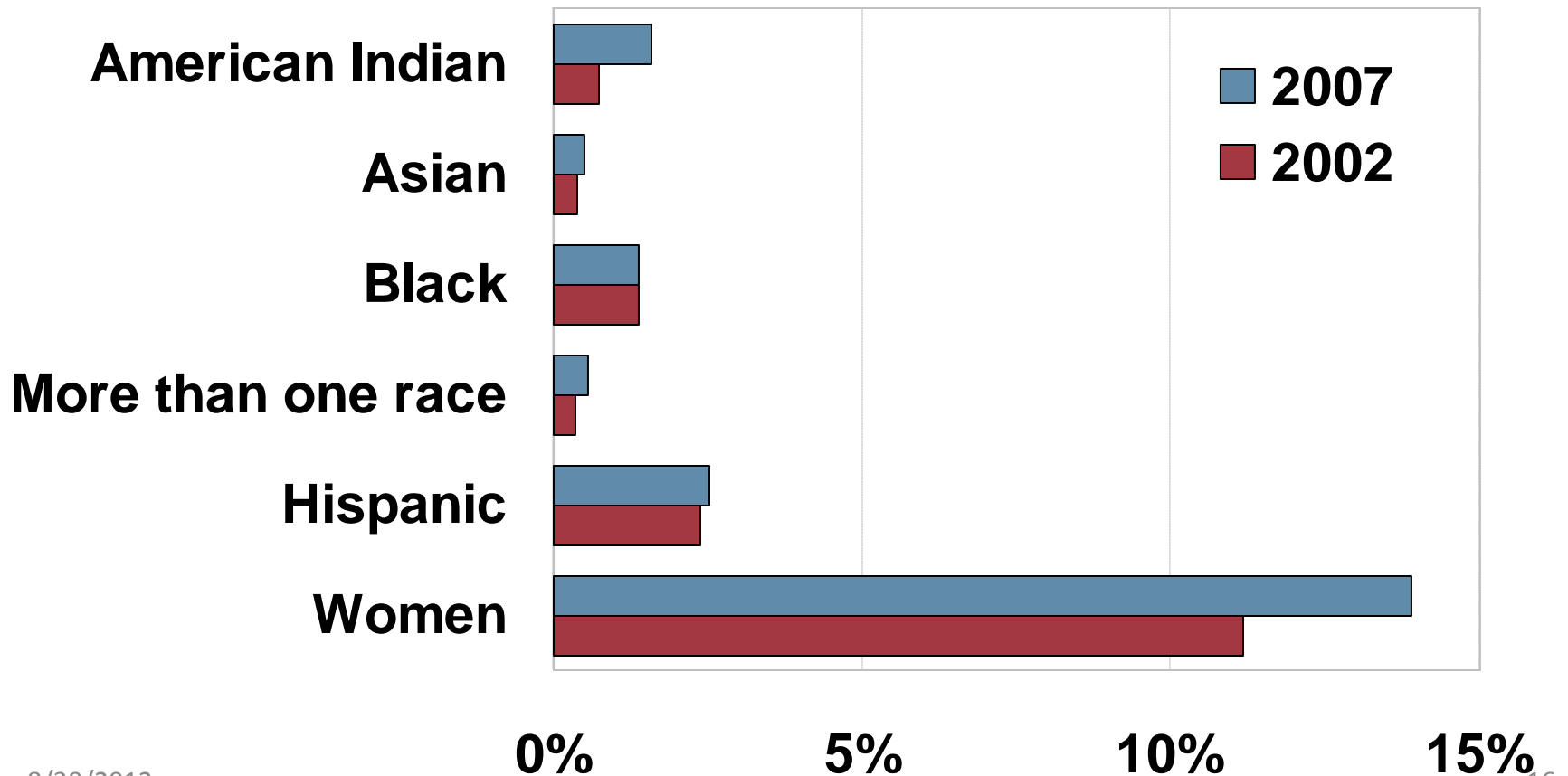


Average Age of Principal Operator





Percent of Operators by Race, Ethnicity, and Gender

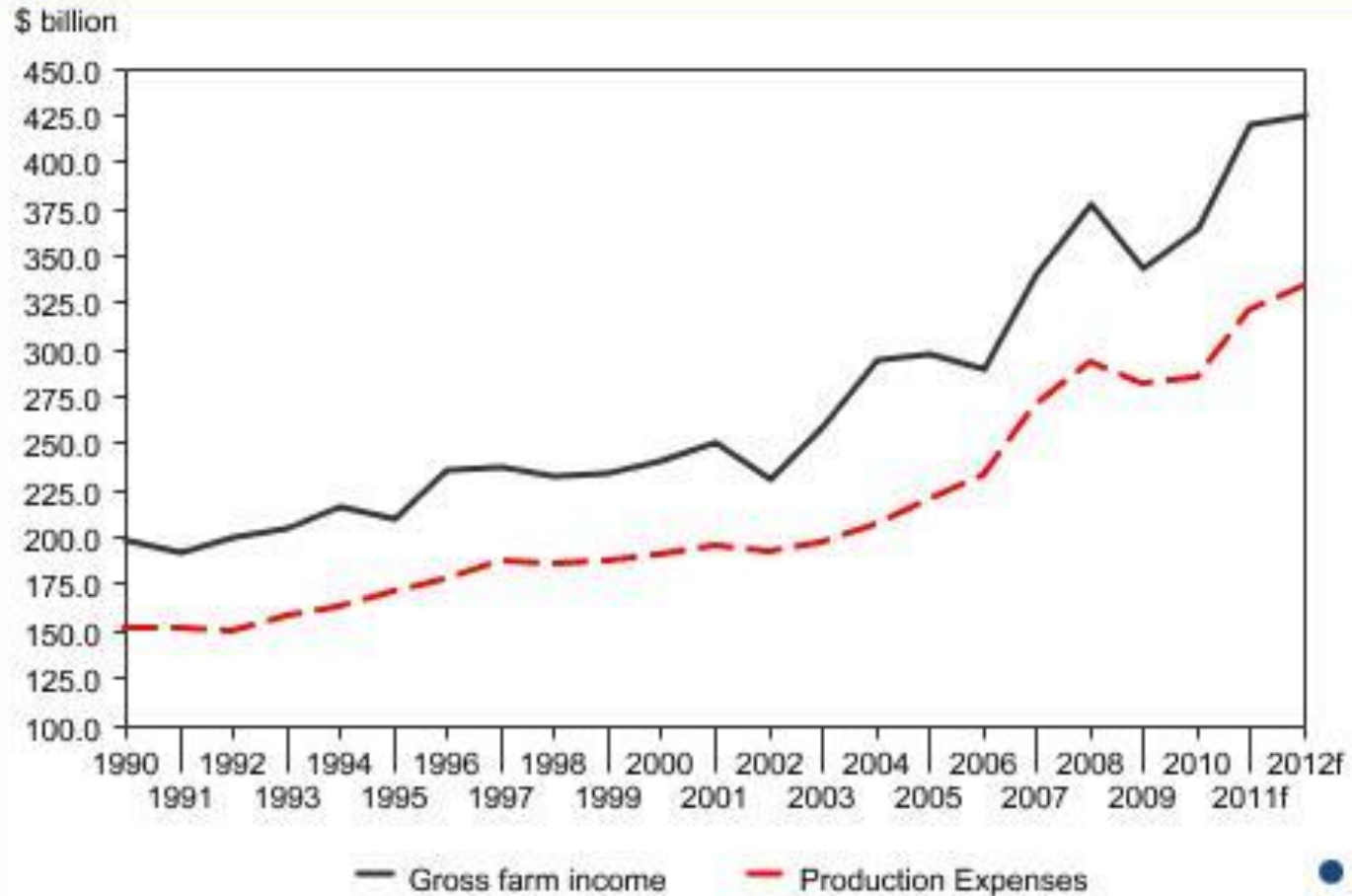




2012 Census of Agriculture

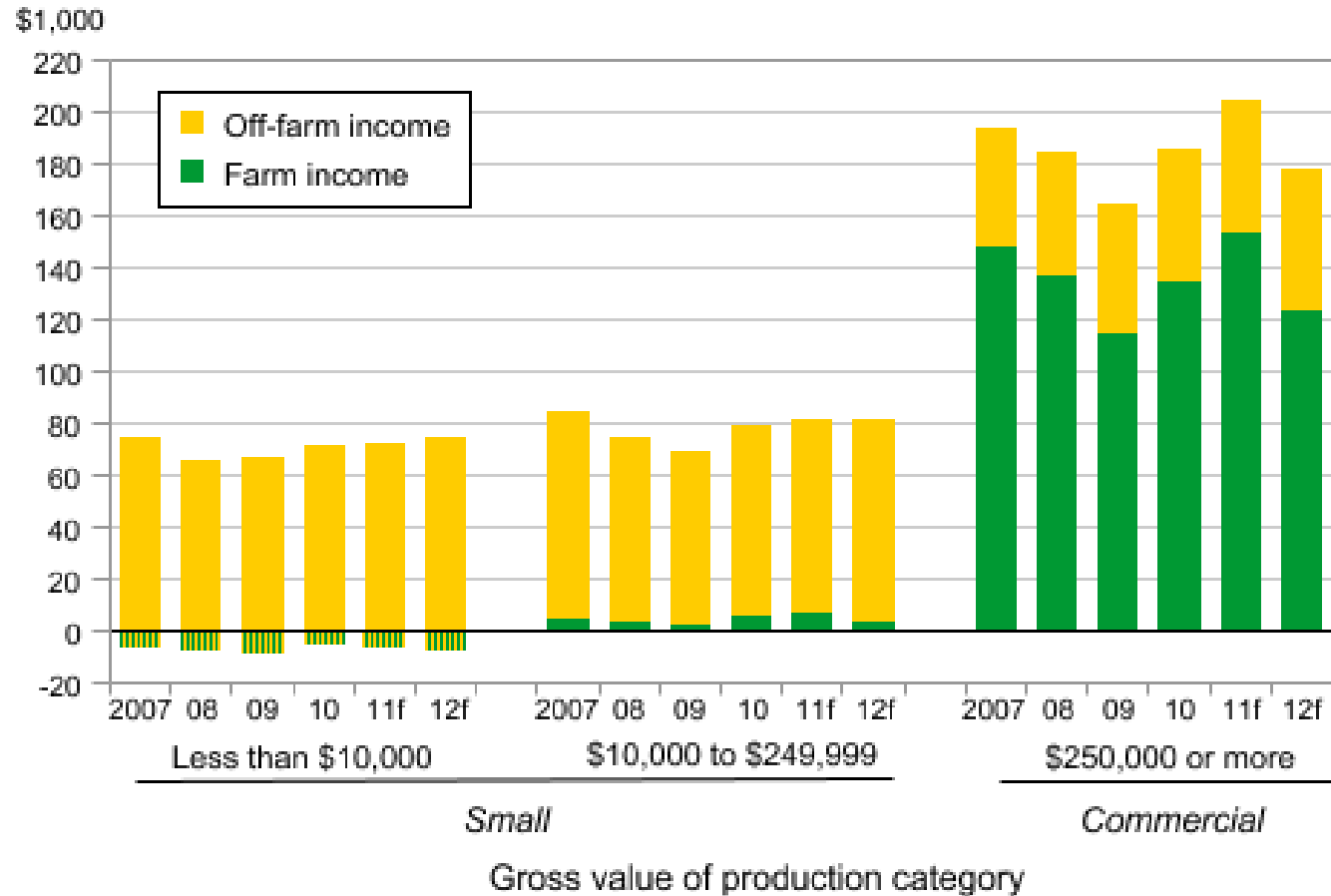
2012 Census of Agriculture	
National Agricultural Classification Survey – Mail list building	1.2 million January – March 2012
Sign up Ends	July 1, 2012
Census is Mailed	3 million farmers December 30, 2012
Information Collected	All aspects of farming operations during 2012
Response Deadline	February 2013
Data compilation and analysis	March 2013-December 2013
Data Release	February 2014

Gross farm income and production expenses, 1990-2012f



Source: Economic Research Service, USDA.

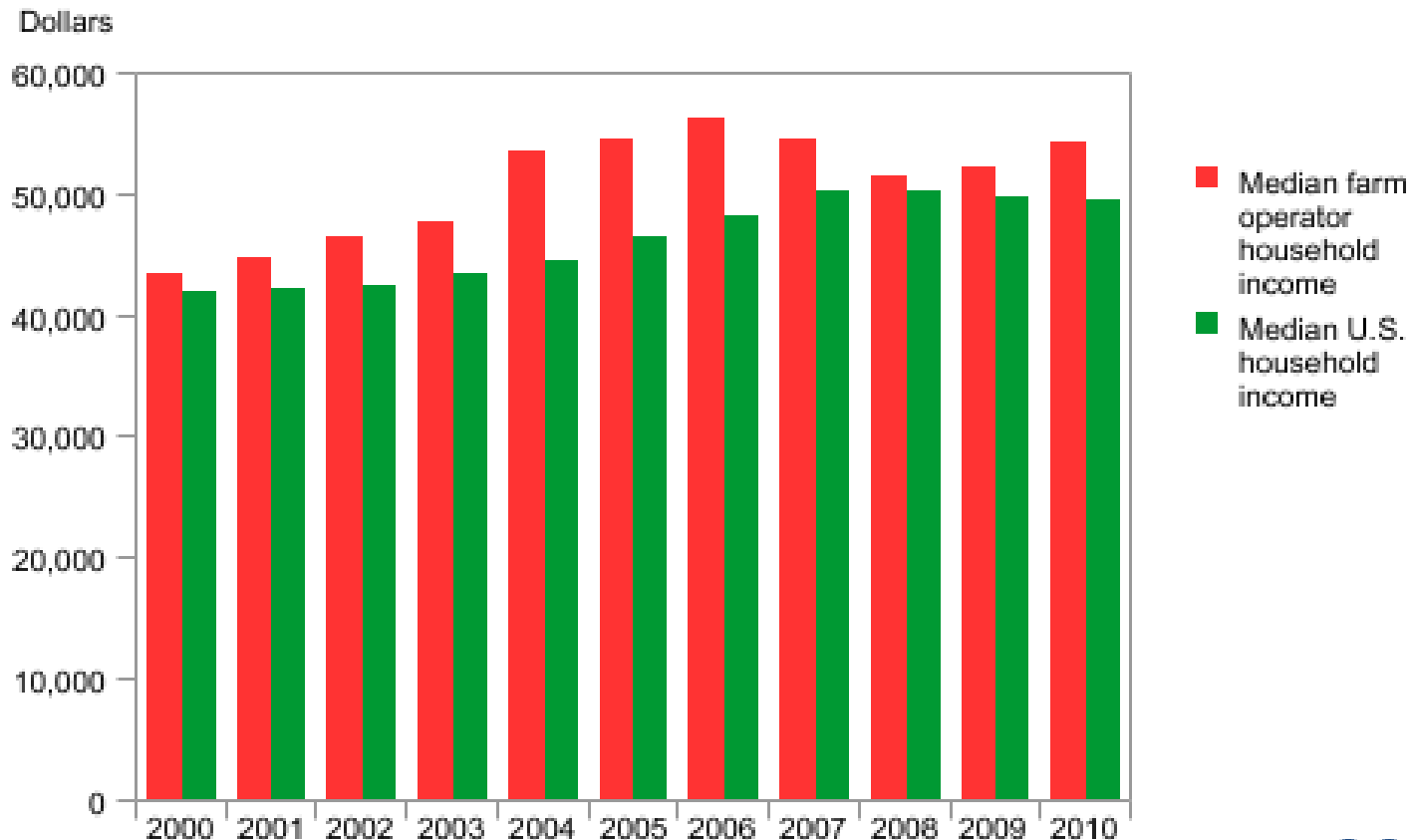
Average household income of family farms, by size of farm, 2007-12f



Note: f = forecast.

Source: Agricultural Resource Management Survey, ERS and NASS, USDA.

Median farm operator household income compared with median U.S. household income, 2000-2010



Source: Agricultural Resource Management Survey, ERS and NASS, USDA and the Current Population Survey, U.S. Bureau of the Census.