

# Migration Data From the U.S. Census Bureau

U.S. Census Bureau  
Webinar Presented on  
November 15, 2011

# Speakers

- Stanley J. Rolark, Chief, Public Information Office
- Alison Fields, Chief, Journey-to-Work and Migration Statistics Branch
- William Frey, Senior Fellow, Metropolitan Policy Program, Brookings Institution

# Access to Today's Webinar

Toll free number 1-800-989-7686

Participant passcode: CENSUS

# Migration Webinar Press Kit

- Today's slide presentation
- Data sources
- News release
- Speaker bios

# Products Being Released Today

- Geographical Mobility: 2010 to 2011  
Detailed Tables
- Geographical Mobility Report: 2008 to 2009
- State-to-State Migration Flows: 2010
- Lifetime Mobility in the United States: 2010

# Geographical Mobility: 2010 to 2011 Detailed Tables

(Based on 2011 Current Population Survey)

# 2010-2011 Migration Estimates

(Population 1 year and over)

- Mover rate: 11.6%. Lowest since first collected by CPS in 1948.
- Type of move\*
  - Same county: 7.7%.
  - Different county, same state: 2.0%.
  - Different state: 1.6%.
  - From abroad: 0.4%.

\* When added, these numbers do not equal the mover rate due to rounding.

## Geographical Mobility Rate: 1948-2011

(population 1 year and over)

Percent



Source: U.S. Census Bureau, Current Population Survey, 1948-2011



# Other Results

- Reason for Move
  - Family related: 27.9%
  - Employment related: 18.5%
  - Housing related: 44.9%
  - Other: 8.8%
- Foreclosure/eviction: 1.2%\*

\*The foreclosure/eviction category is new for 2011. It was created from write-in responses and will be added as a pre-coded response in 2012.

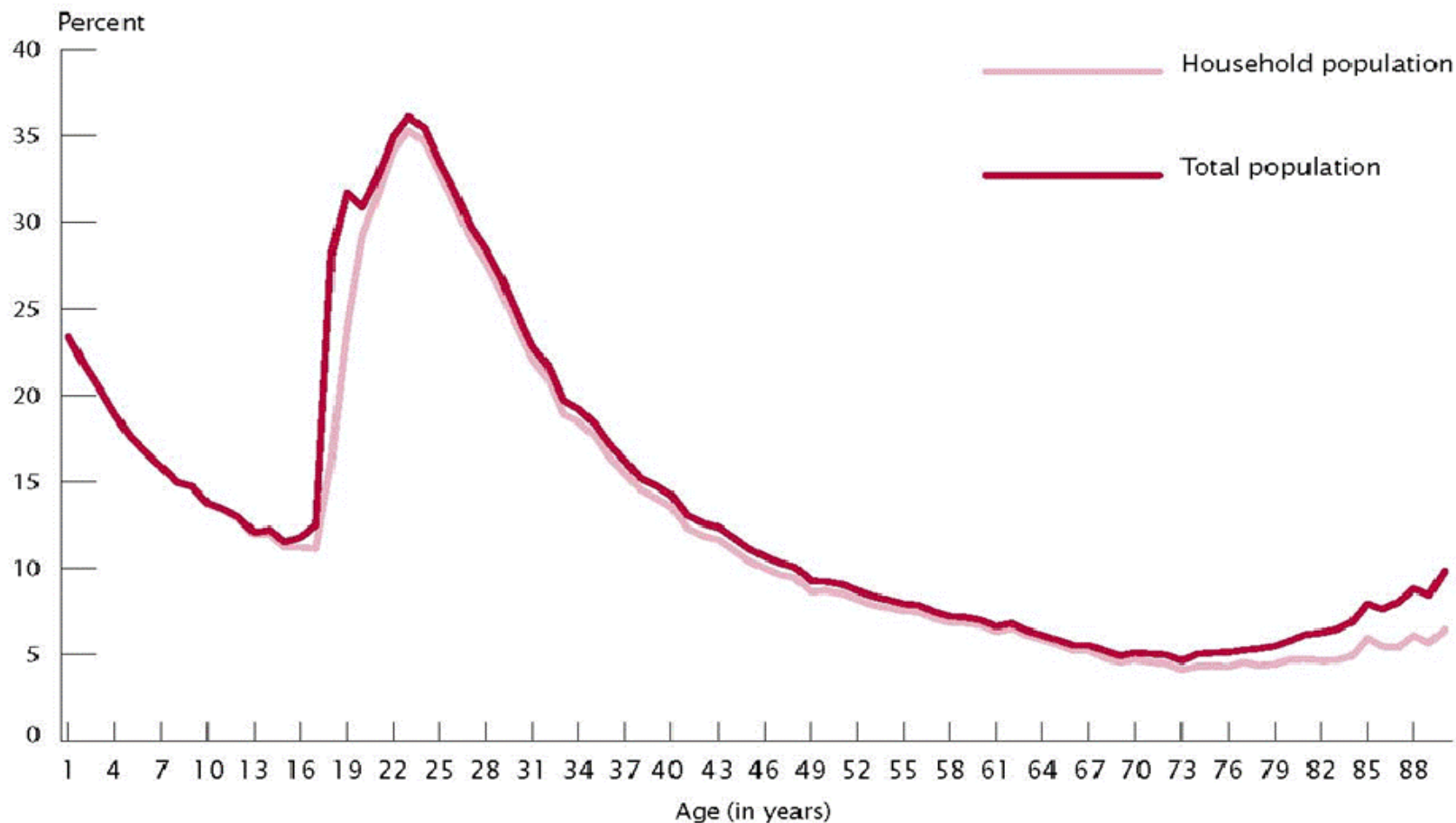
# Geographical Mobility Report: 2008 to 2009

(Based on 2009 Current Population Survey and  
American Community Survey)

# Topics Covered in the Report

- Mover Rate by Age: 2009
- State-to-State Migration: 2006 through 2009
- Reason for Move by Distance of Intercounty Move: 2009

Figure 2.  
**Mover Rate by Age: 2009**  
 (Population 1 year and over)



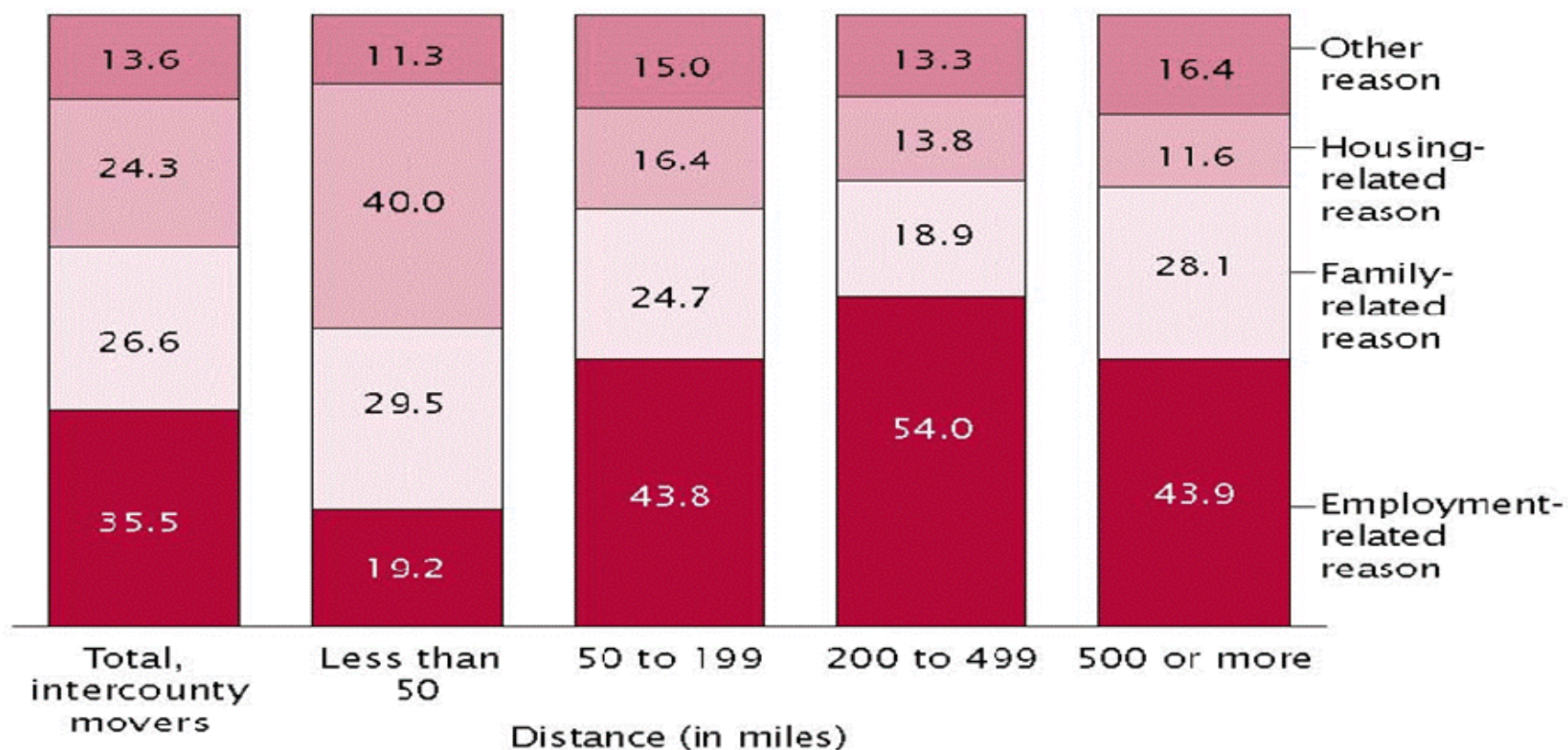
Note: See <[www.census.gov/acs/www/Downloads/data\\_documentation/Accuracy/ACS\\_Accuracy\\_of\\_Data\\_2009.pdf](http://www.census.gov/acs/www/Downloads/data_documentation/Accuracy/ACS_Accuracy_of_Data_2009.pdf)> for further information on the accuracy of the data.

Source: U.S. Census Bureau, American Community Survey, 2009.

Figure 4.

### Reason for Move by Distance of Intercounty Move: 2009

(Percent distribution of intercounty movers 1 year and over)



Source: U.S. Census Bureau, Current Population Survey, Annual Social and Economic Supplement, 2009.

# State-to-State Migration

## (Among the largest yearly flows)

2009 1-year ACS data	
California to Texas	61,270
New York to Florida	53,482
California to Arizona	46,921
Florida to Georgia	43,170
California to Washington	42,693

2008 1-year ACS data	
California to Texas	73,174
New York to Florida	58,145
California to Arizona	51,253
Florida to Georgia	50,222
New York to New Jersey	48,055

2007 1-year ACS data	
California to Texas	78,310
Florida to Georgia	77,098
California to Arizona	65,684
New York to Florida	63,312
California to Nevada	53,489

2006 1-year ACS data	
<b>Louisiana to Texas</b>	<b>118,552</b>
New York to Florida	87,576
California to Arizona	85,497
California to Texas	81,572
Florida to Georgia	75,182

Source: U.S. Census Bureau, American Community Survey, 1-year estimates, 2006 to 2009.

Because of sampling error, the estimates may not be significantly different from one another or from estimates for other flows.

# State-to-State Migration Flows: 2010

(Based on 2010 American Community Survey)

# 2010 1-Year ACS State-to-State Migration (Among the largest flows)

State-to-State Flow	Estimate
California to Texas	68,959
New York to Florida	55,011
Florida to Georgia	49,901
California to Arizona	47,164
New Jersey to Pennsylvania	42,456

State-to-State Flow	Estimate
New York to New Jersey	41,374
California to Washington	39,468
Texas to California	36,582
Georgia to Florida	35,615
California to Nevada	35,472

Source: U.S. Census Bureau, American Community Survey, 1-year estimates, 2010.

Because of sampling error, the estimates may not be significantly different from one another or from estimates for other flows.



# In- and Out- Migration by State

## (Among the largest flows)

State	Domestic Immigration
Texas	486,558
Florida	482,889
California	444,749
New York	269,427
North Carolina	263,256

State	Domestic Outmigration
California	573,988
Florida	427,853
Texas	411,641
New York	363,139
Illinois	277,579

Source: U.S. Census Bureau, American Community Survey, 1-year estimates, 2010.

These estimates were first released in September with the 2010 ACS 1-year standard data products on American FactFinder. Because of sampling error, the estimates may not be significantly different from one another or from estimates not shown.

# The States of Origin....

Among the largest origin states to Texas in ACS 2010 data

- California 68,959
- Louisiana 31,149
- Florida 26,668
- Oklahoma 22,969
- Illinois 20,169

These estimates have not been previously published for 2010 ACS. Because of sampling error, these estimates may not be significantly different from one another or from estimates for other flows not listed.

# And the States of Destination...

Among the largest destination states from California in ACS 2010 data

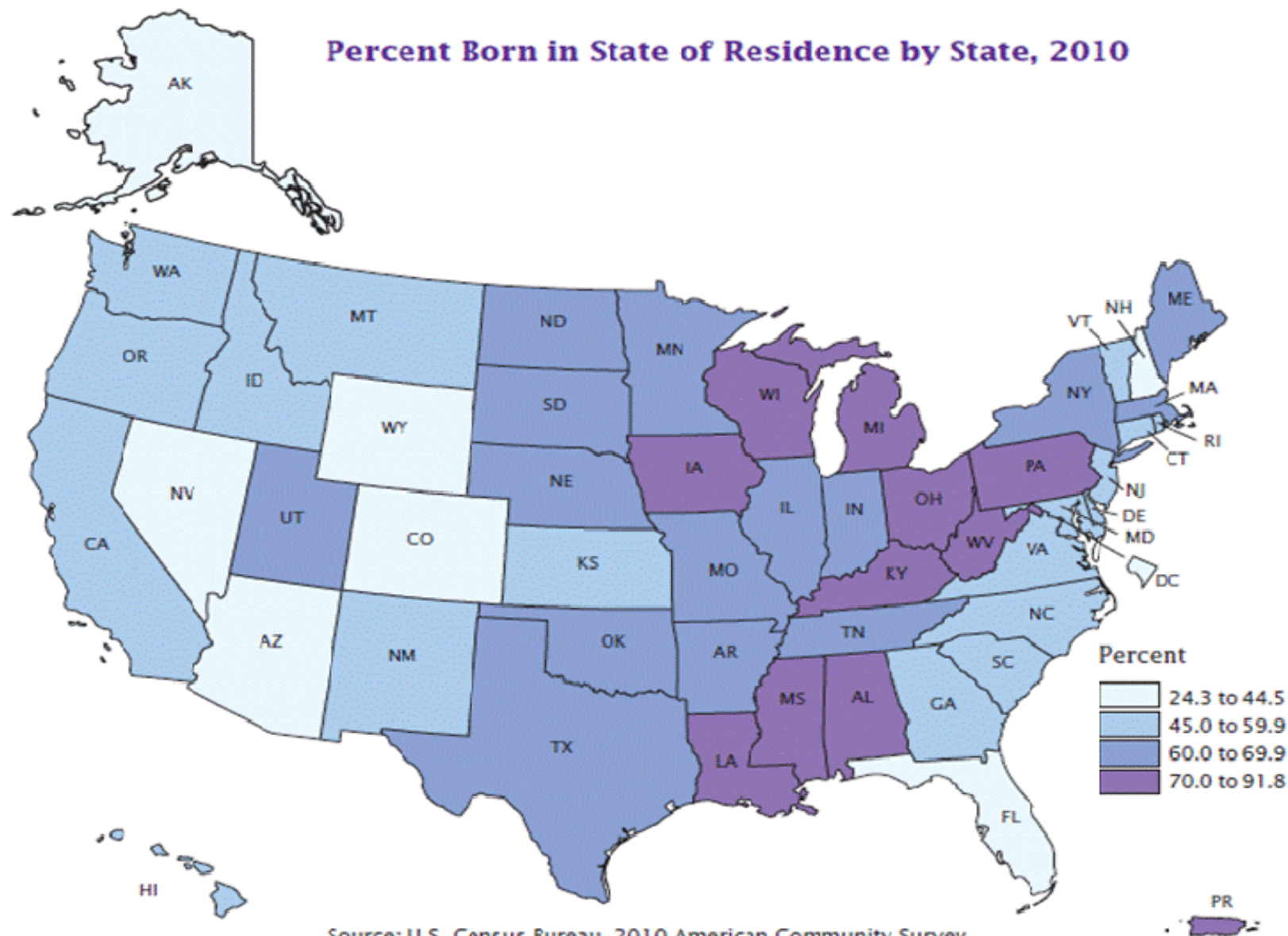
- Texas 68,959
- Arizona 47,164
- Washington 39,468
- Nevada 35,472
- Oregon 34,190

These estimates have not been previously published for 2010 ACS. Because of sampling error, these estimates may not be significantly different from one another or from estimates for other flows not listed.

# Lifetime Mobility in the United States: 2010

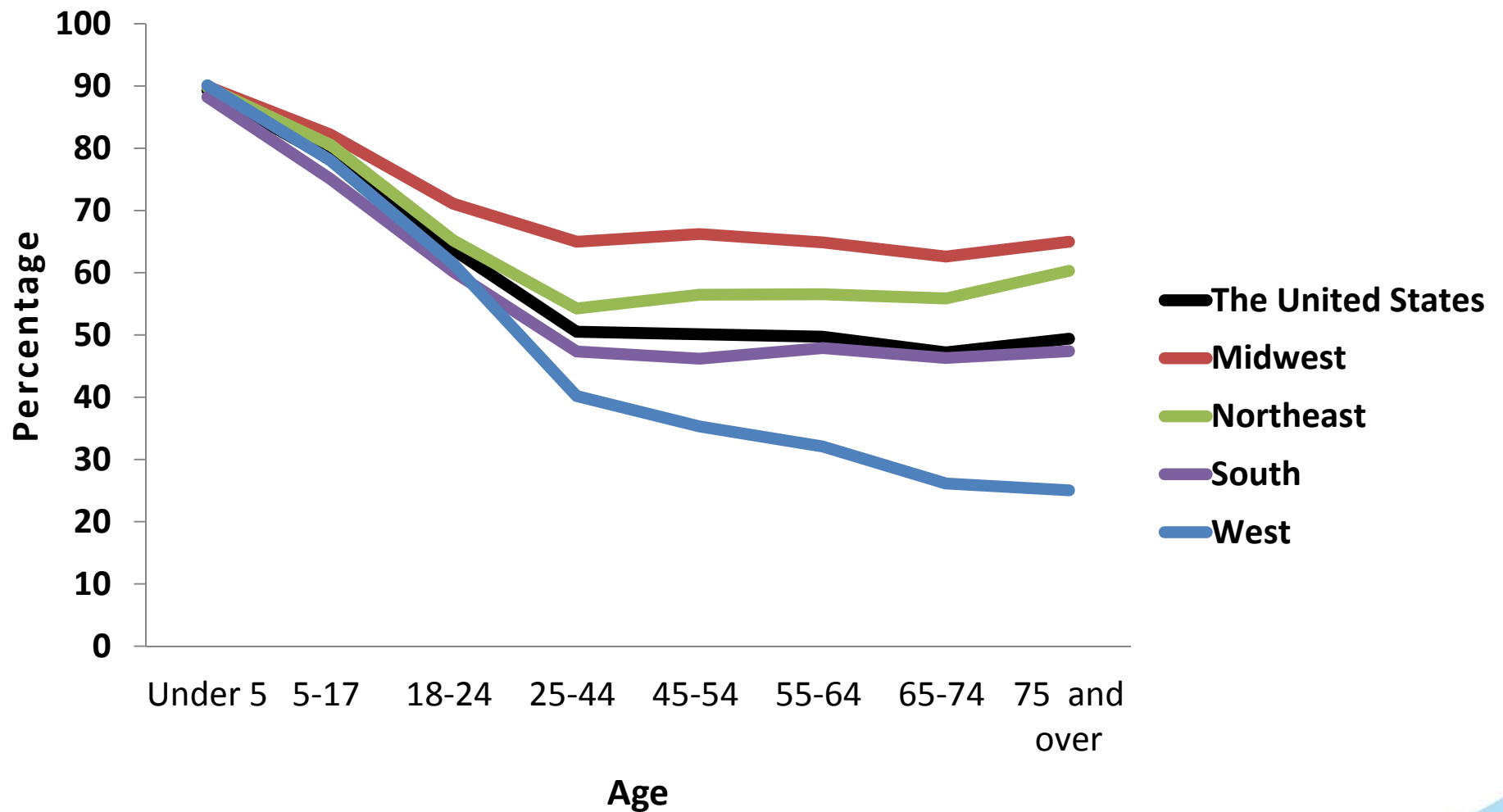
(Based on 2010 American Community Survey)

## Percent Born in State of Residence by State, 2010



Source: U.S. Census Bureau, 2010 American Community Survey, 2010 Puerto Rico Community Survey.

# Percent Born in State of Residence by Age and Region: 2010



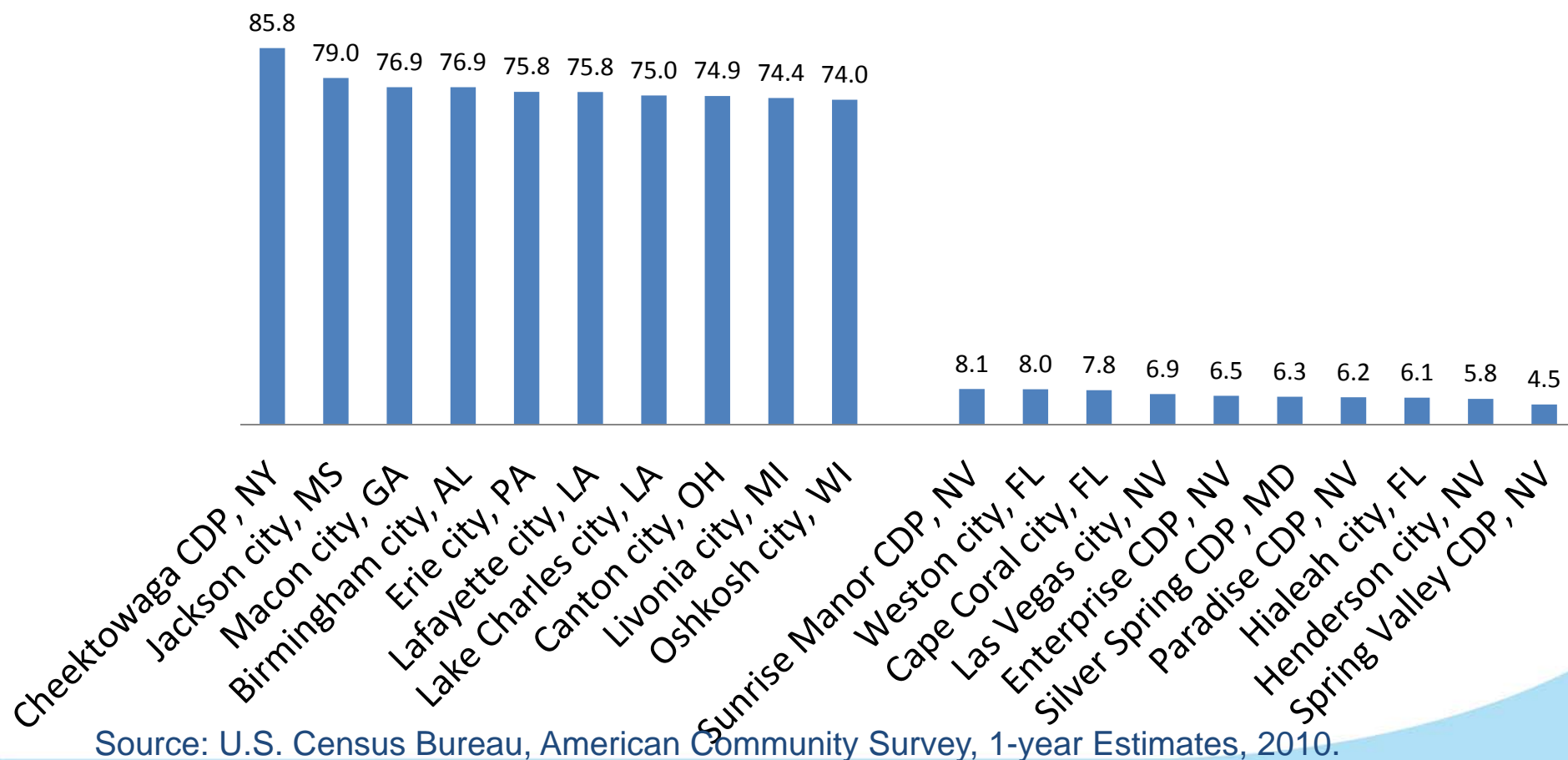
Source: U.S. Census Bureau, American Community Survey, 1-year Estimates, 2010.

## States with the Highest and Lowest Percentage of Residents Born in Current State, 2010

State	Total Population	Percent Born in Current State	MOE (+/-)
<b>Highest Percentage</b>			
Louisiana	4,544,228	78.8	0.4
Michigan	9,877,574	76.6	0.2
Ohio	11,536,182	75.1	0.2
Pennsylvania	12,709,630	74.0	0.2
Wisconsin	5,691,047	72.1	0.3
<b>Lowest Percentage</b>			
Alaska	713,985	39.0	0.9
Arizona	6,413,737	37.7	0.4
District of Columbia	604,453	37.3	0.9
Florida	18,843,326	35.2	0.2
Nevada	2,704,642	24.3	0.5

# U.S. Cities with the Highest and Lowest Percentage of the Homegrown Population

■ Percentage of Population 25 and Older Born in State of Residence



Source: U.S. Census Bureau, American Community Survey, 1-year Estimates, 2010.



# Source and Accuracy

- The migration products being released today are from the American Community Survey and the Current Population Survey's Annual Social and Economic Supplement. Statistics from surveys are subject to sampling and nonsampling error. For more information on the source of the data and accuracy of the estimates, including standard errors and confidence intervals, see Appendix G of the technical documentation at <http://www.census.gov/apsd/techdoc/cps/cps-main.html> for the CPS and Accuracy of the Data at [http://www.census.gov/acs/www/data\\_documentation/documentation\\_main/](http://www.census.gov/acs/www/data_documentation/documentation_main/) for the ACS.
- All comparative statements have undergone statistical testing, and, unless otherwise noted, all comparisons are statistically significant at the 10 percent significance level.

# **Trend Analyses of US Census Migration Data**

William H. Frey  
The Brookings Institution

[www.brookings.edu/experts/freyw](http://www.brookings.edu/experts/freyw)

**\* National Migration Rate Trends -- Post WW II Lows**

**CPS Annual Social and Economic Supplement Data thru 2011**

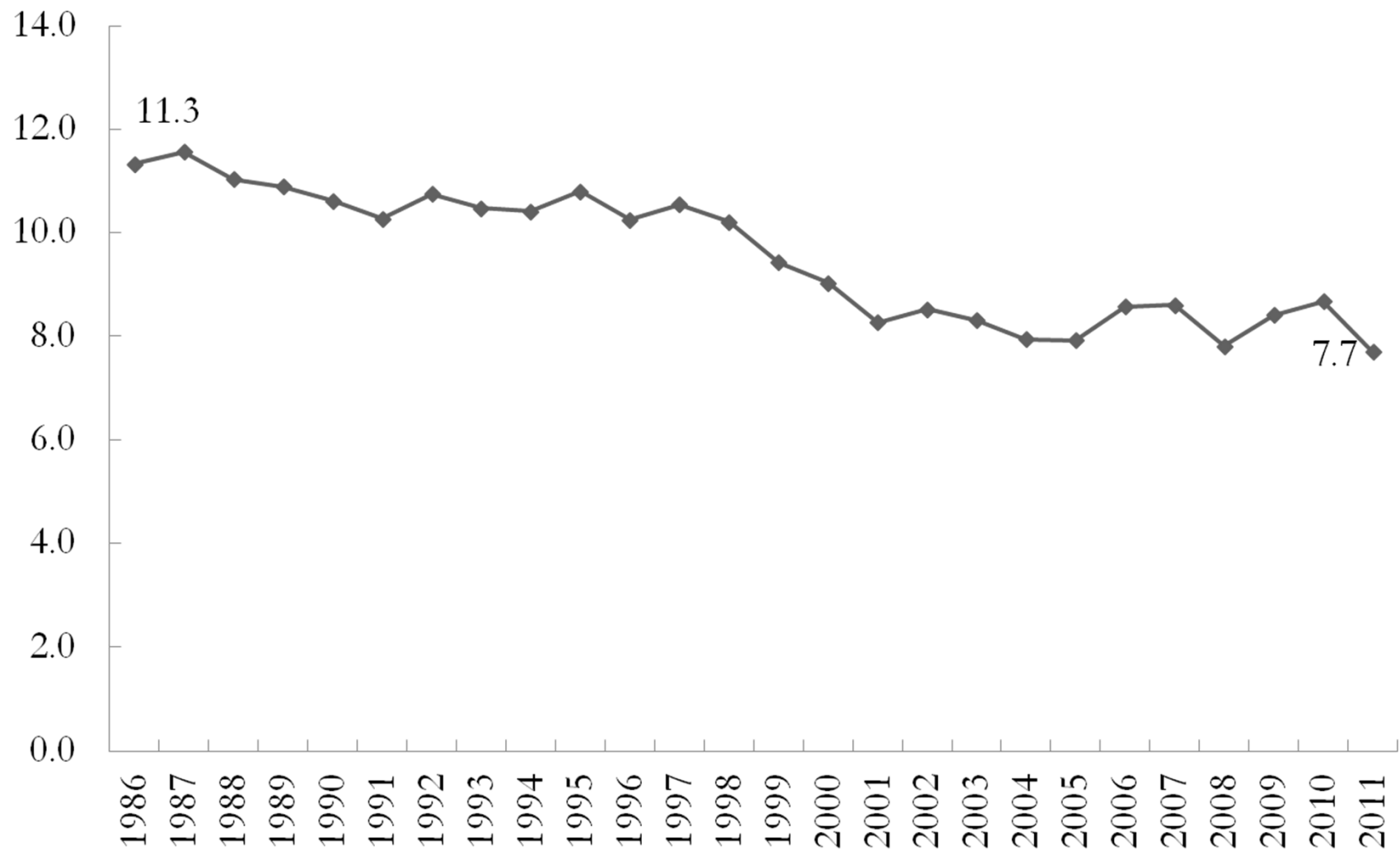
**\* State Migration Flows -- Pre and Post Recession**

**American Community Survey Data 2005-2010**

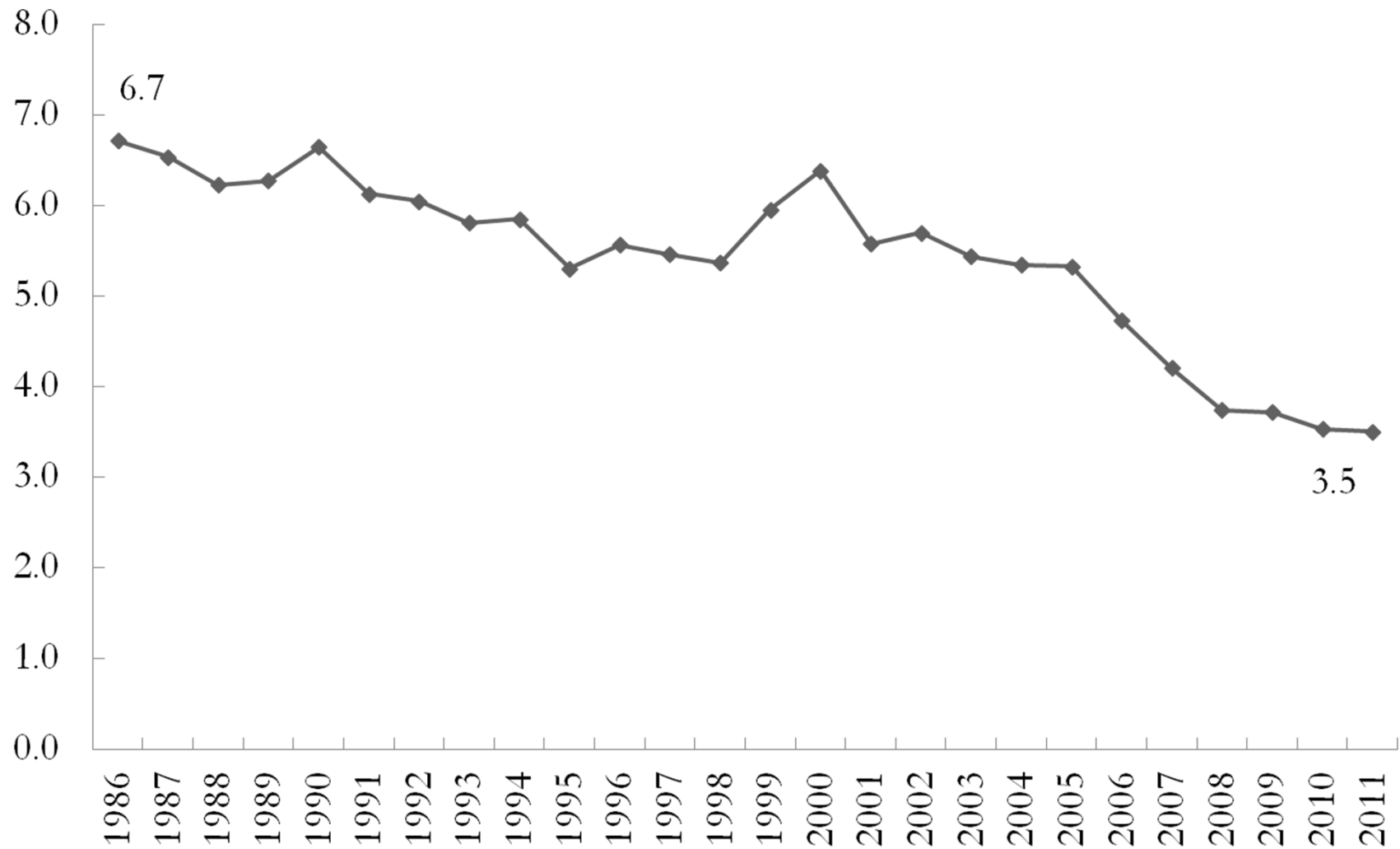
**\* Birthplace of State Populations – Century Trends**

**Decennial Censuses 1900-2000, ACS Data 2010**

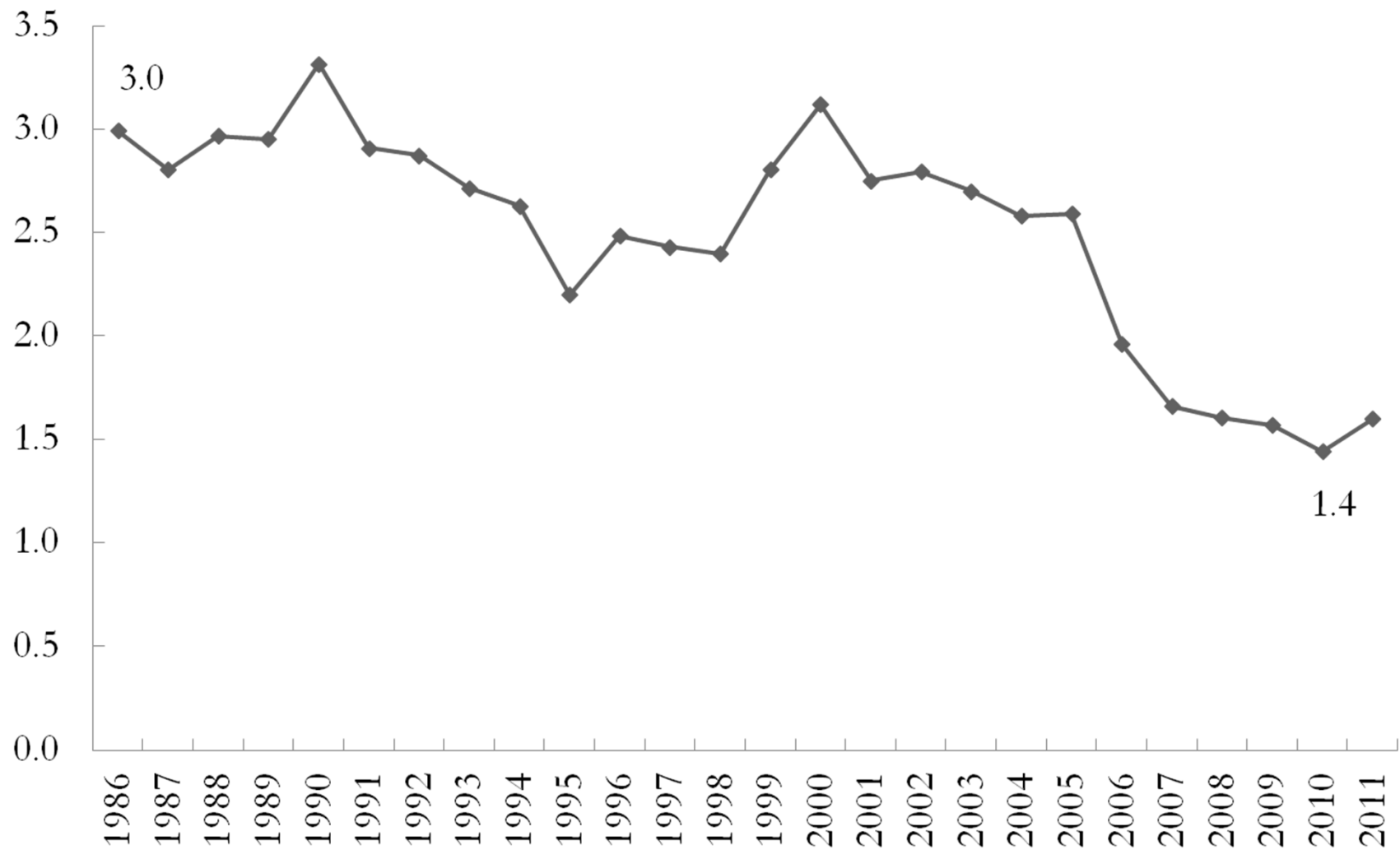
## Local (Within County) Migration Rate Dips to Low Point in 2000-11



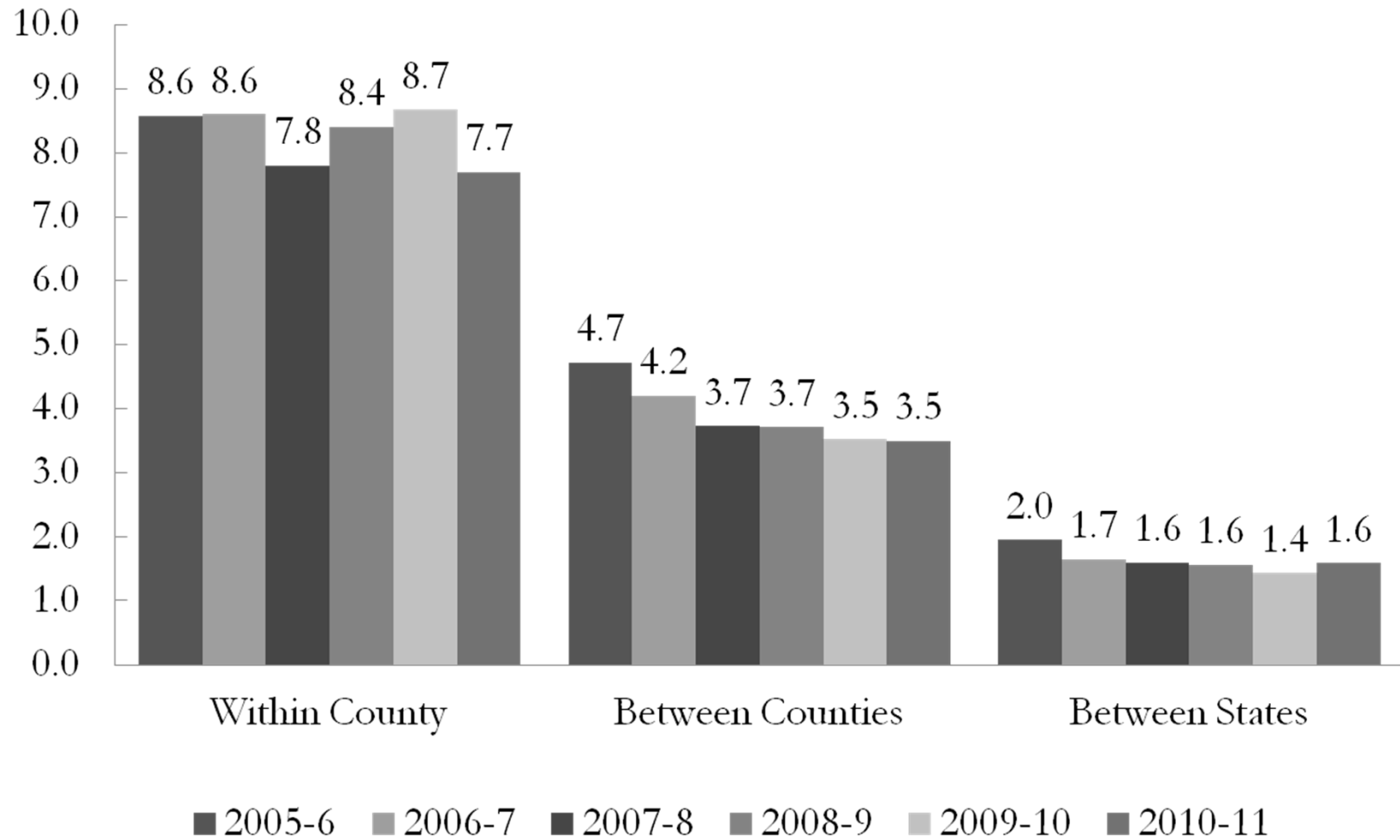
## Inter County Migration Rates Continues Post 2009 Level



## Long Distance (Inter-state) Migration Rate Continues Post 2007 Levels

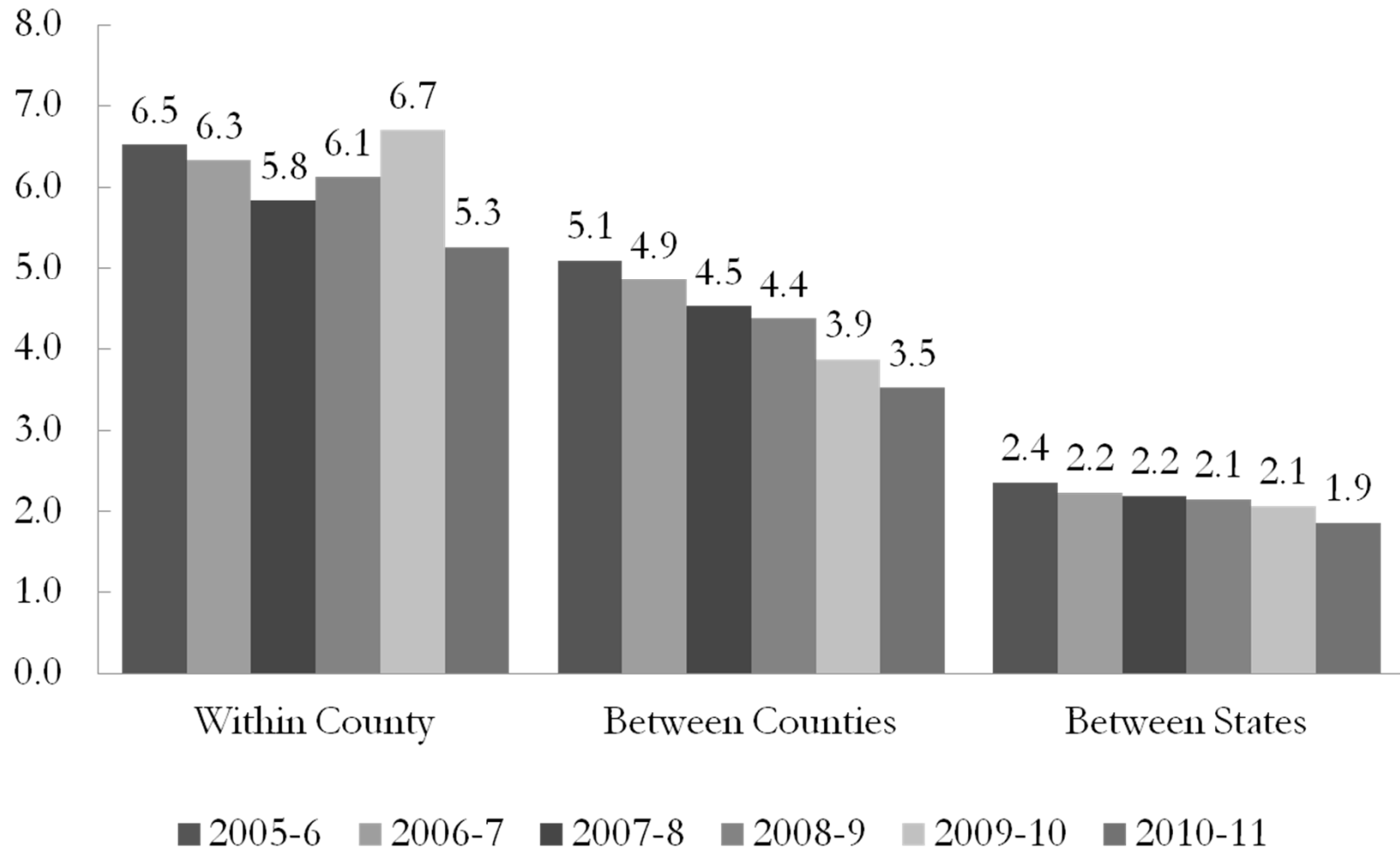


# Rates of Migration 2005-6 to 2010-11



# College Graduates (age 25+)

## Rates of Migration 2005-6 to 2010-11

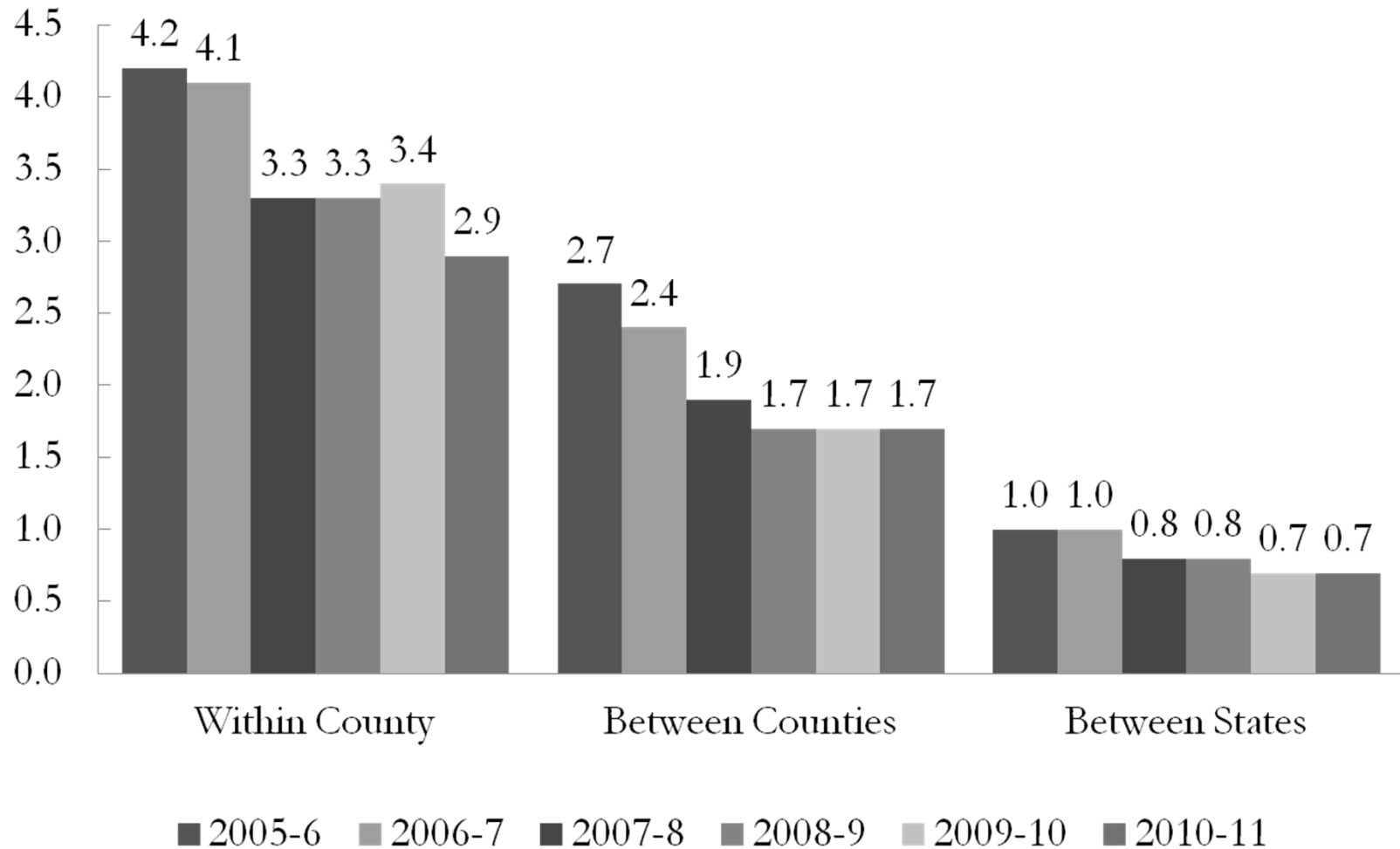


Source: W. Frey analysis of US Census Bureau Current Population Survey Annual Social and Economic Supplement

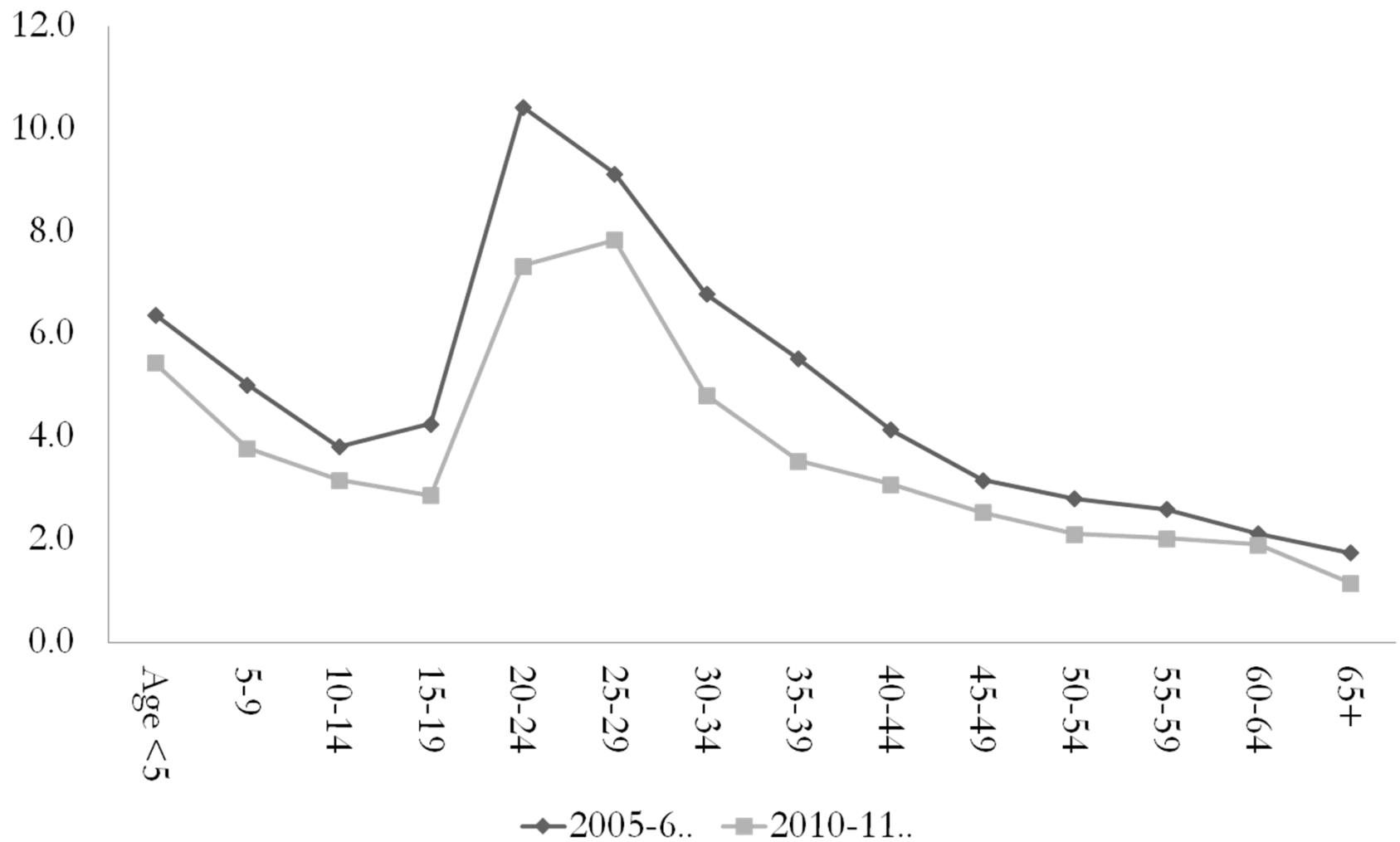


# Persons in Owned Homes

## Rates of Migration 2005-6 to 2010-11

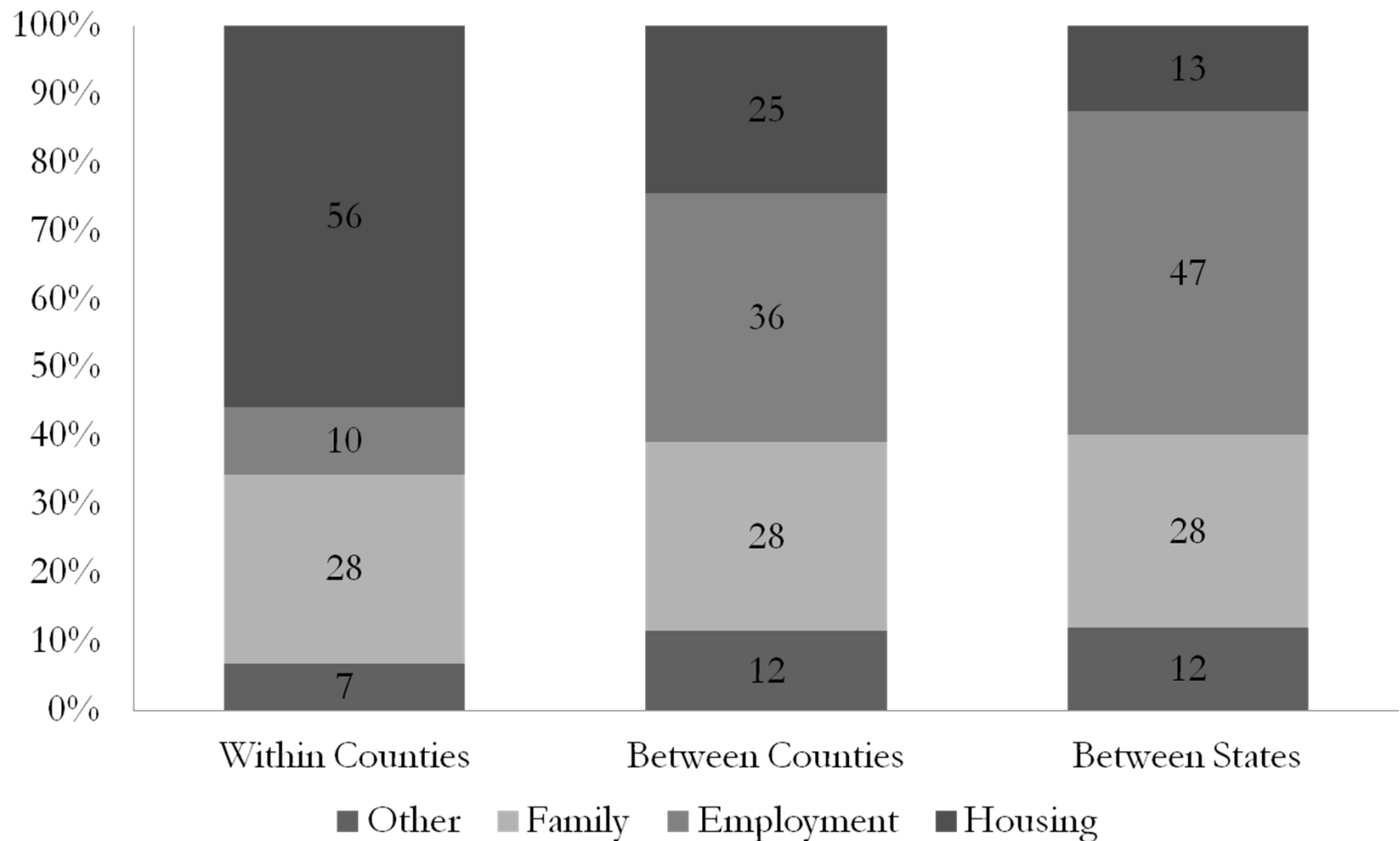


## Intercounty Moves by Age: 2005-6 vs 2010-11



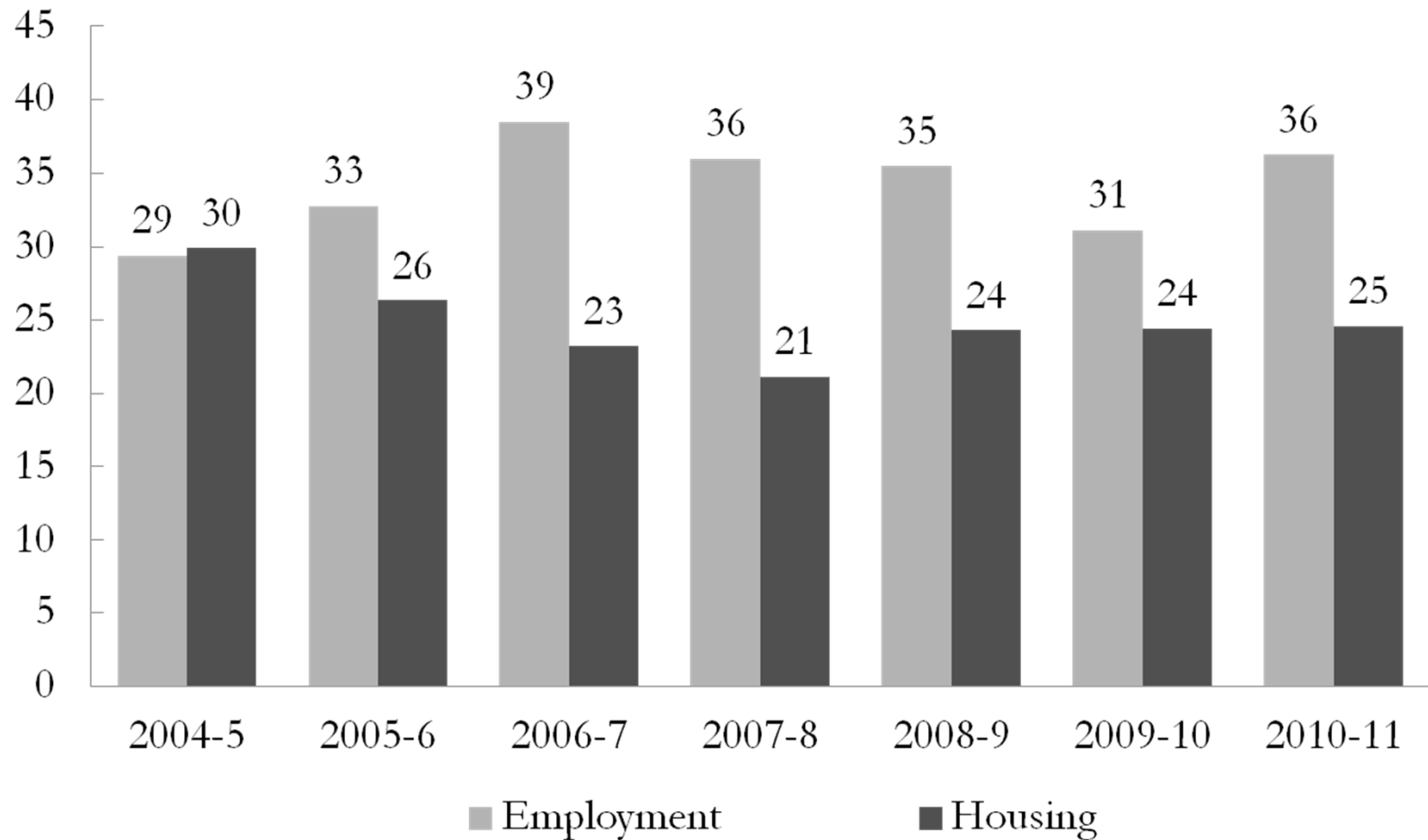
Source: W. Frey analysis of US Census Bureau Current Population Survey Annual Social and Economic Supplement

# Reasons for Move 2010- 2011



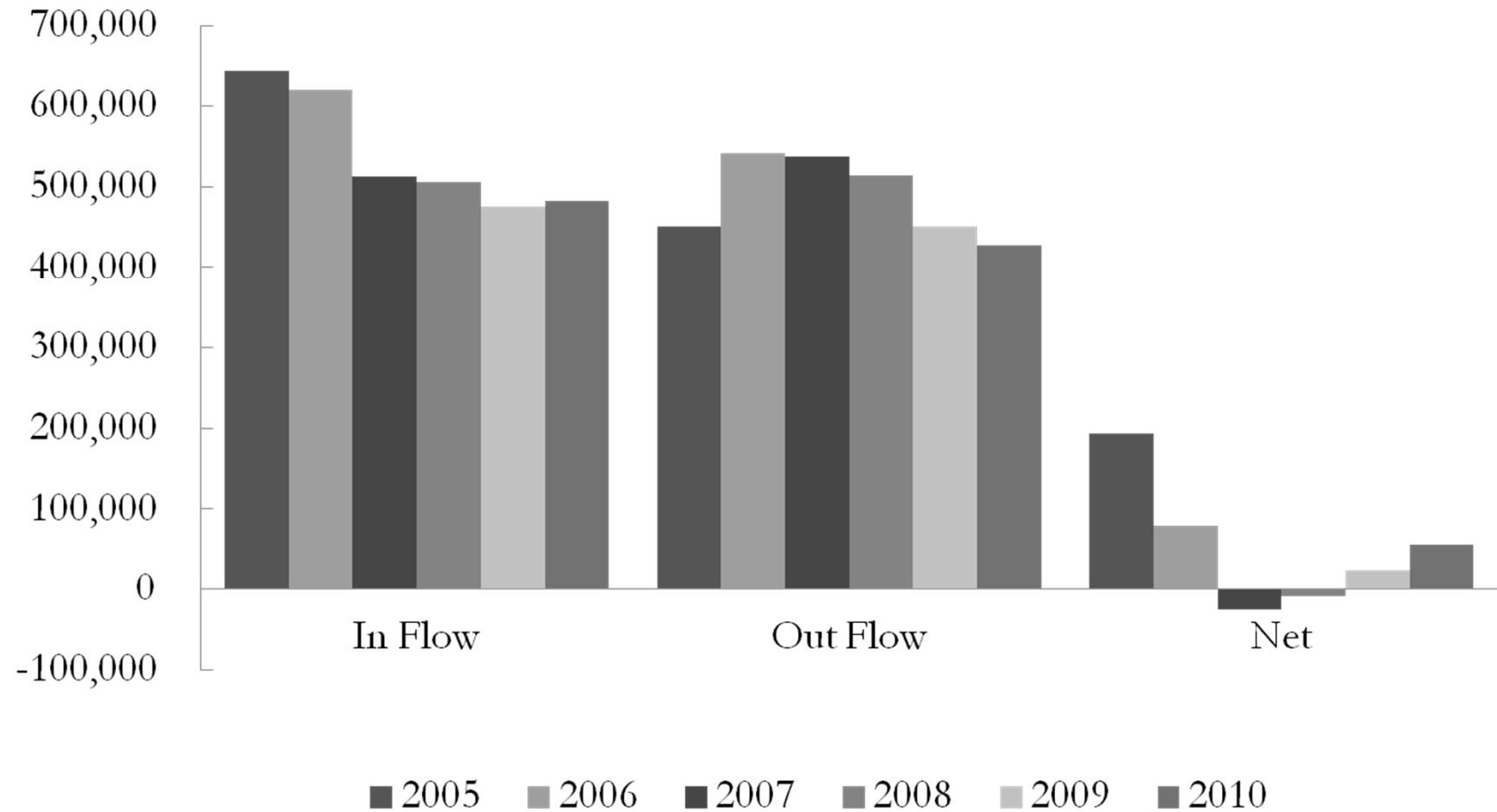
Source: W. Frey analysis of US Census Bureau Current Population Survey Annual Social and Economic Supplement

## Intercounty Reasons for Move: Employment vs Housing

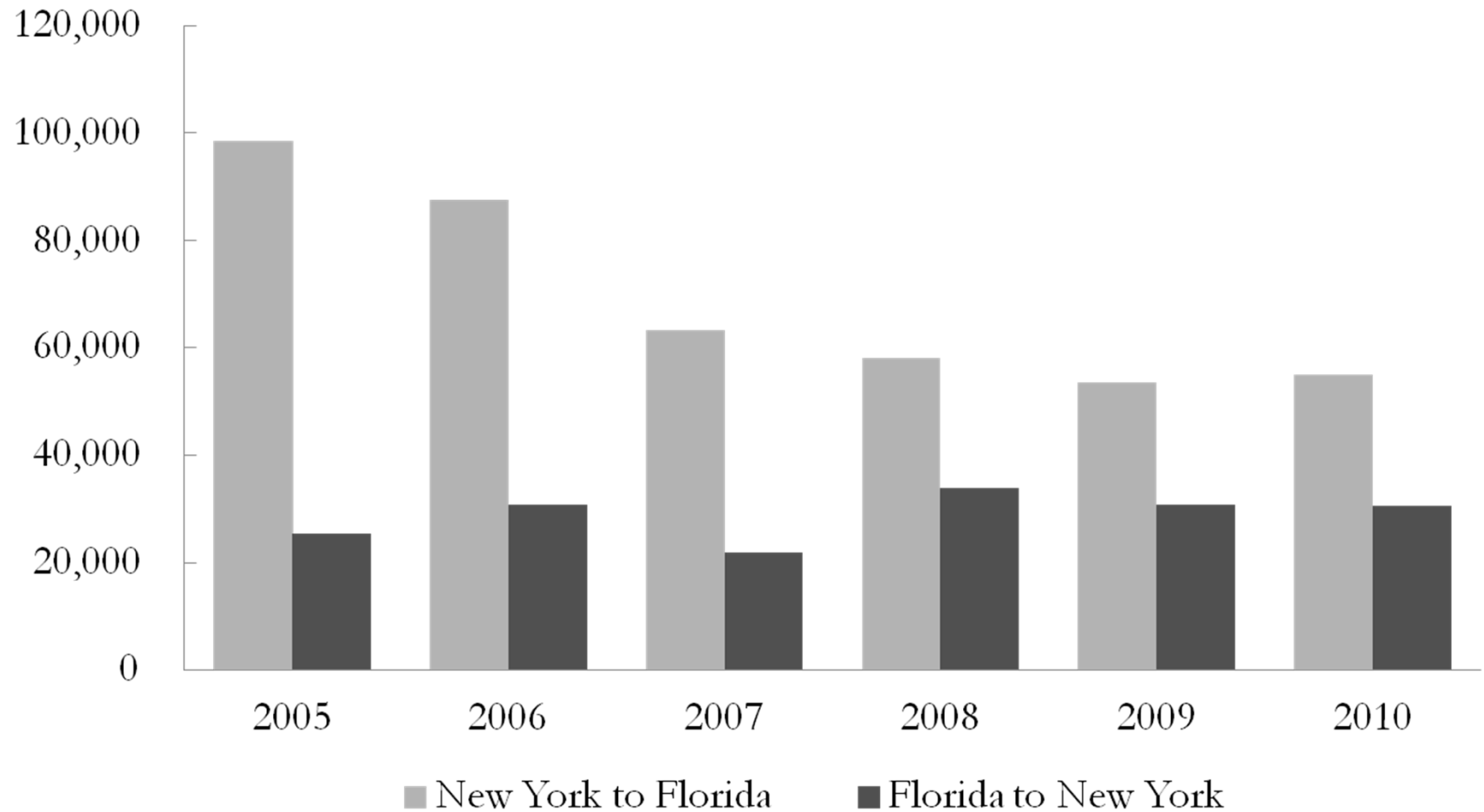


Source: W. Frey analysis of US Census Bureau Current Population Survey Annual Social and Economic Supplement

# Florida In , Out and Net Migration 2005-10

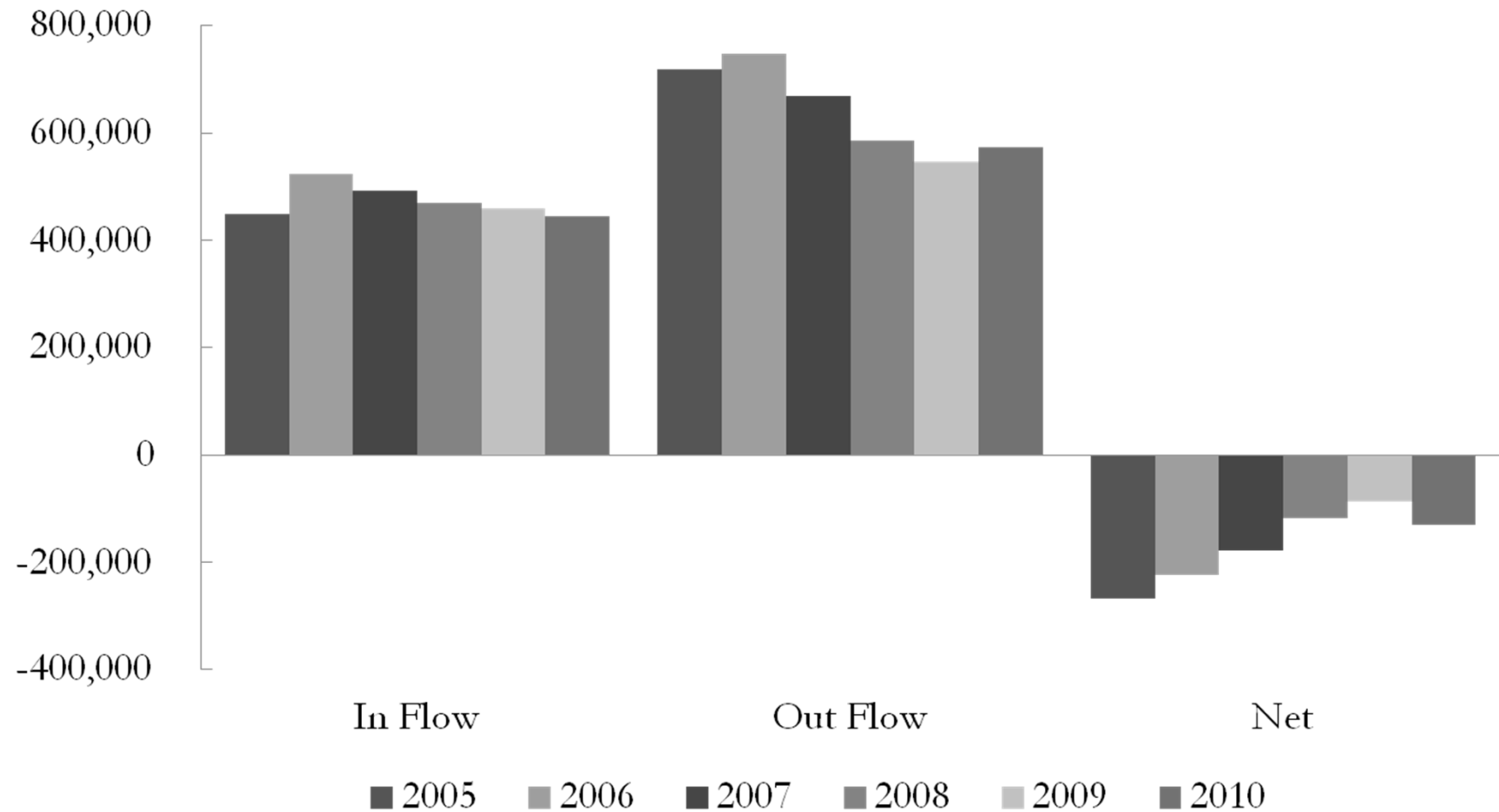


# Flows Between New York and Florida, 2005-10

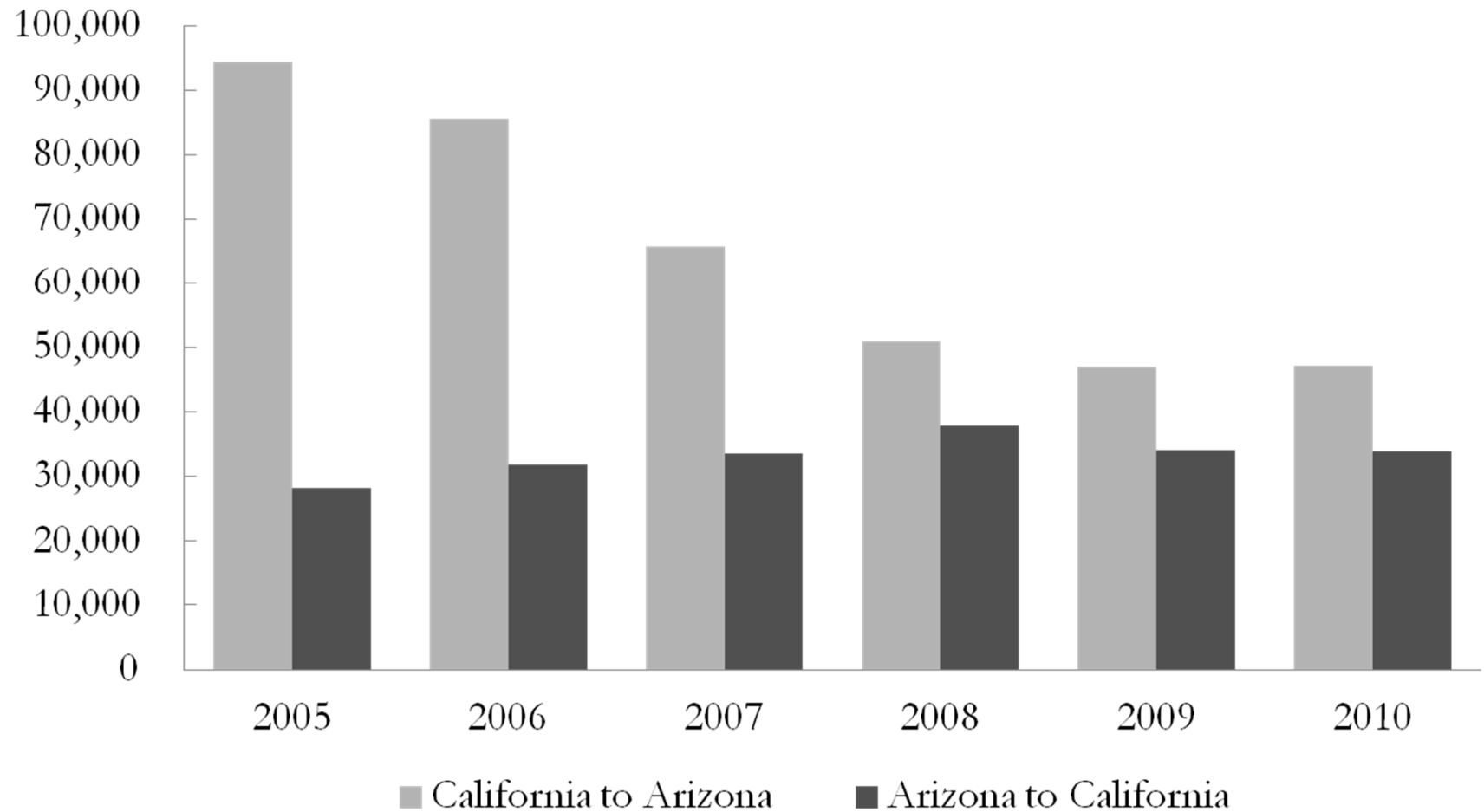


Source: W. Frey analysis of US Census Bureau American Community Survey

# California In, Out and Net Migration 2005-10



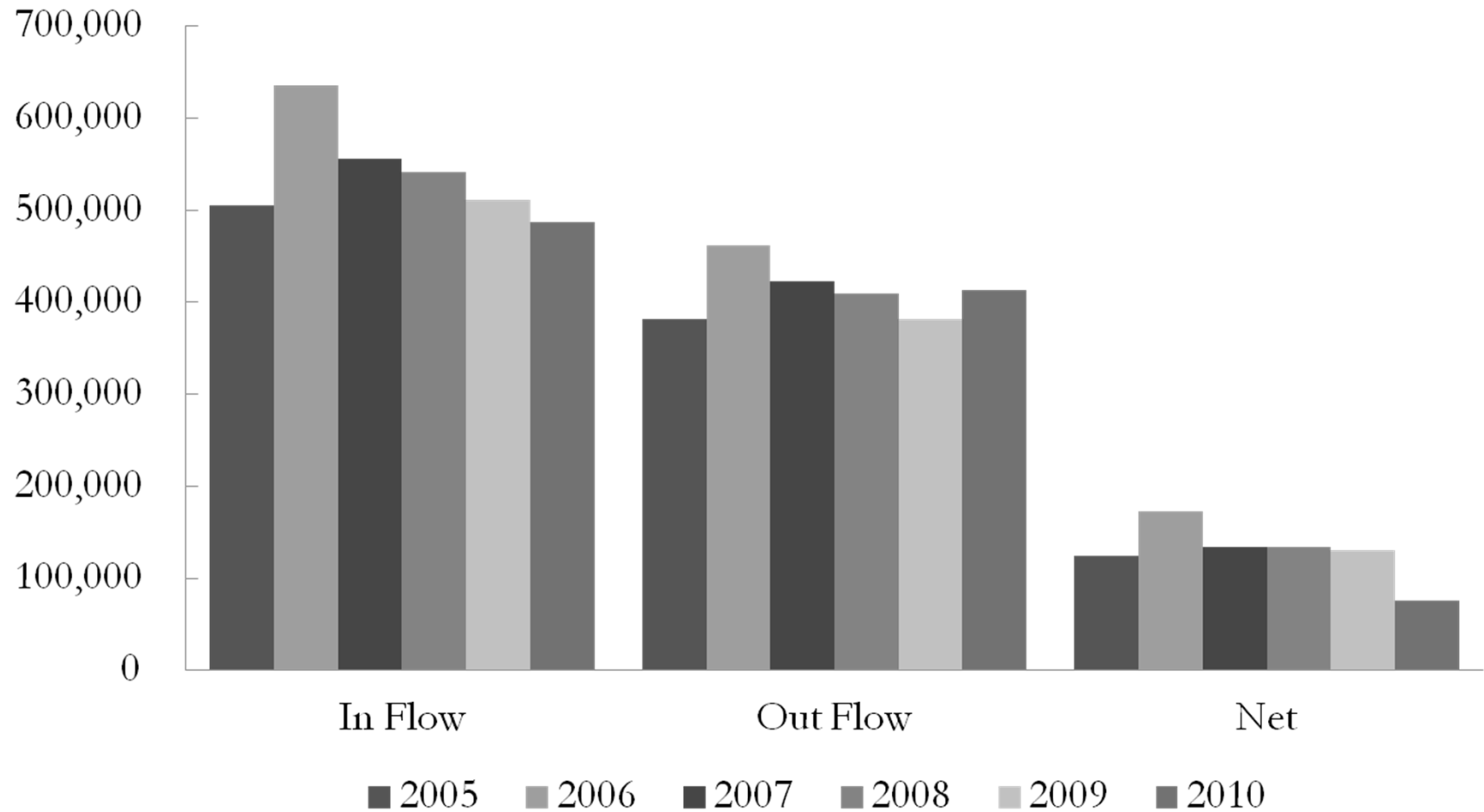
# Flows Between California and Arizona, 2005-10



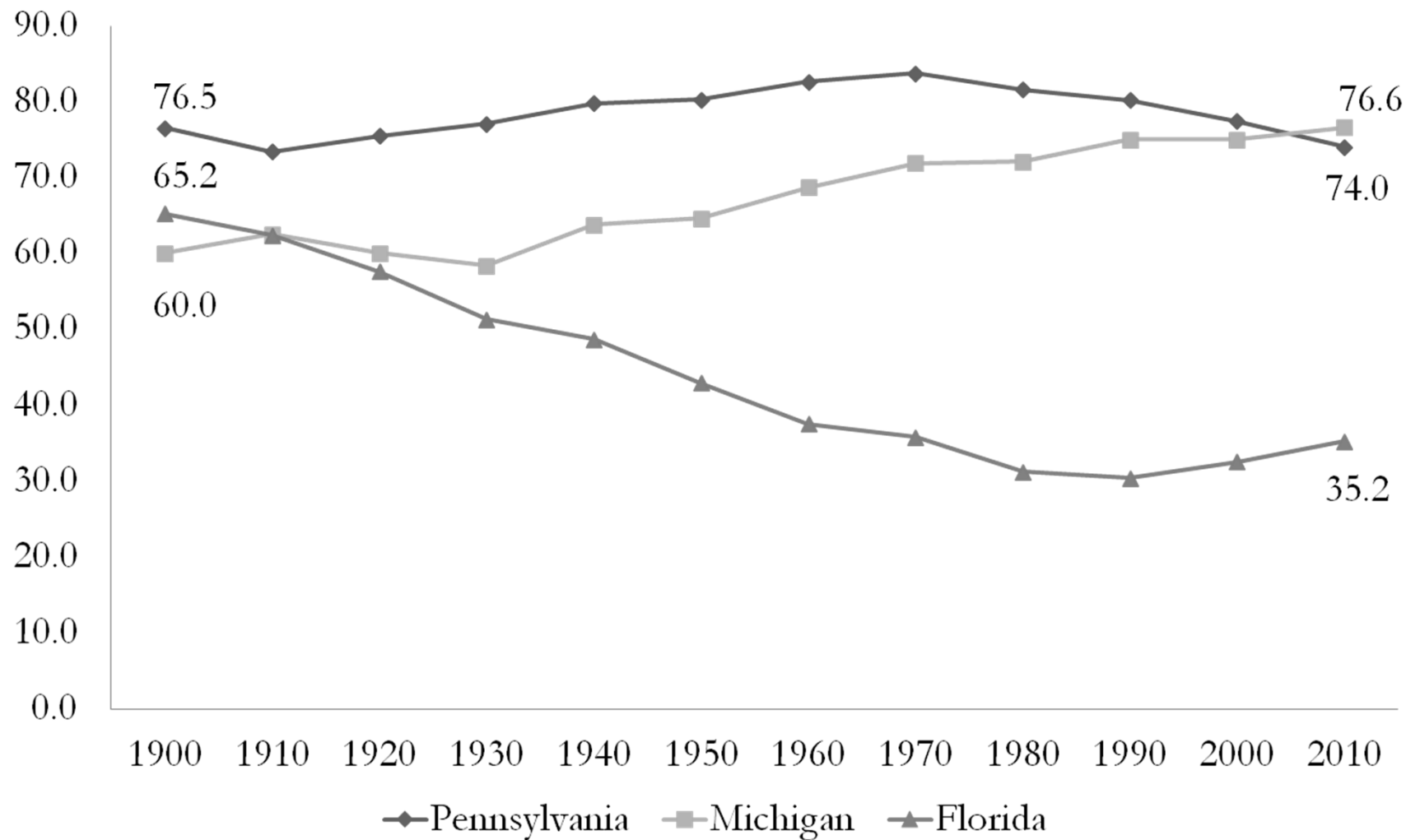
Source: W. Frey analysis of US Census Bureau American Community Survey



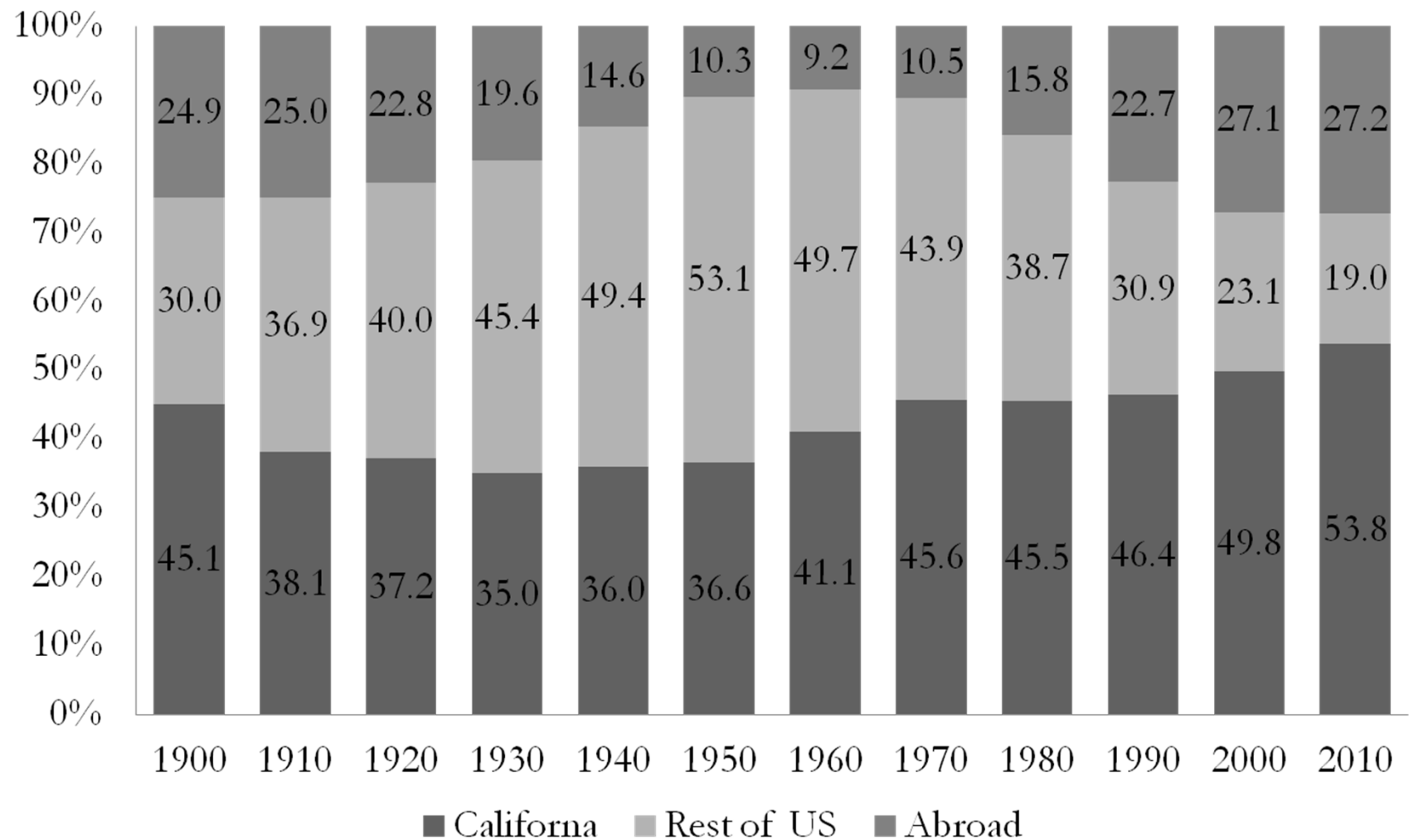
# Texas In, Out and Net Migration 2005-10



# Born in Same State: 1900 - 2010



# Birthplace of California Residents 1900 - 2010



# Questions from Reporters?

# Key Upcoming Releases

- 90+ Population in the United States: 2006-2008 (Nov. 17, 2011)
- 2010 Census Brief: Older Americans (November 2011)
- 2006-2010 American Community Survey Five-Year Estimates (December 2011)
- 2010 Census Summary File 2 (Beginning December 2011)
- July 1, 2011 State Population Estimates (December 2011)
- 2005-2009 American Community Survey County-to-County Migration Flows (Early 2012)

# Contact Information

U.S. Census Bureau  
Public Information Office  
Phone: 301.763.3030  
[www.census.gov](http://www.census.gov)

Rachel Harvey  
Metropolitan Policy Program, Brookings Institution  
Phone: 202-797-6073  
[rharvey@brookings.edu](mailto:rharvey@brookings.edu)  
[www.brookings.edu/metro](http://www.brookings.edu/metro)