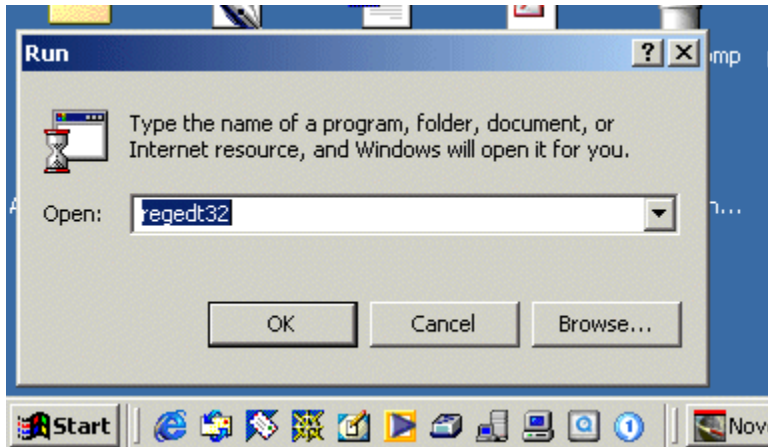


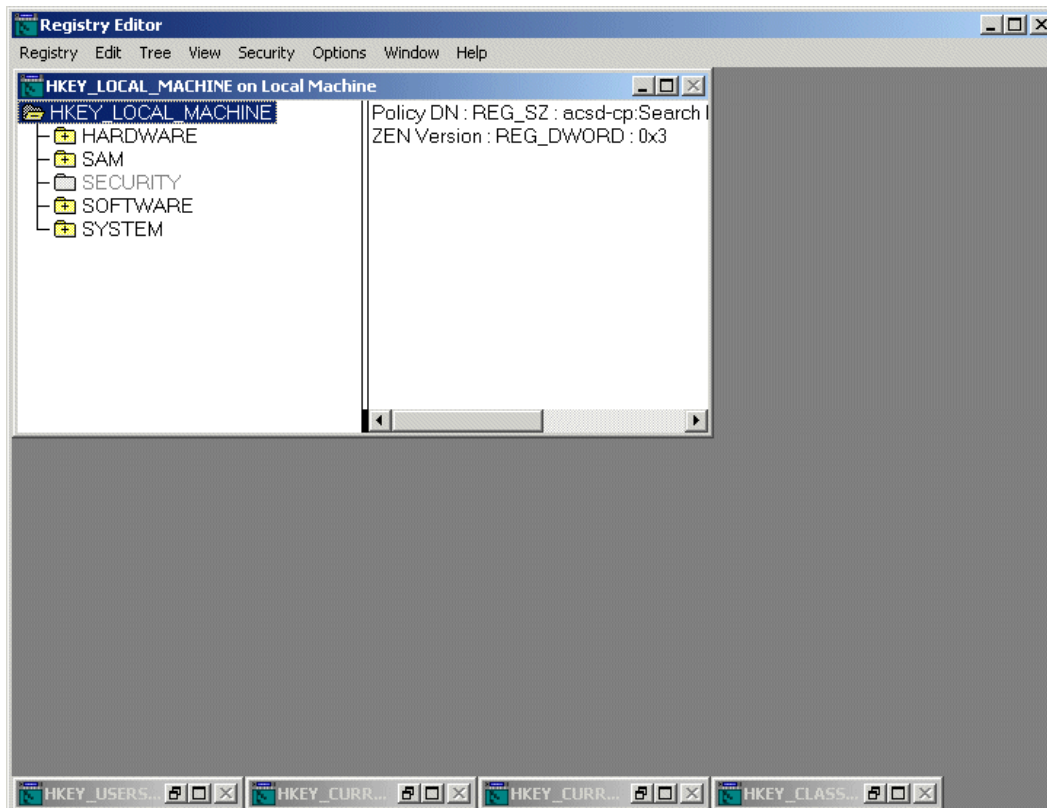
## Census 2000 Data Engine and Windows 2000 User Rights

The Census 2000 Data Engine has a user-rights issue that appears when a user is logged in without Administrative or Power User rights. To correct this, one or two simple registry permissions need to be set to allow a user logged in as a User to run the software.

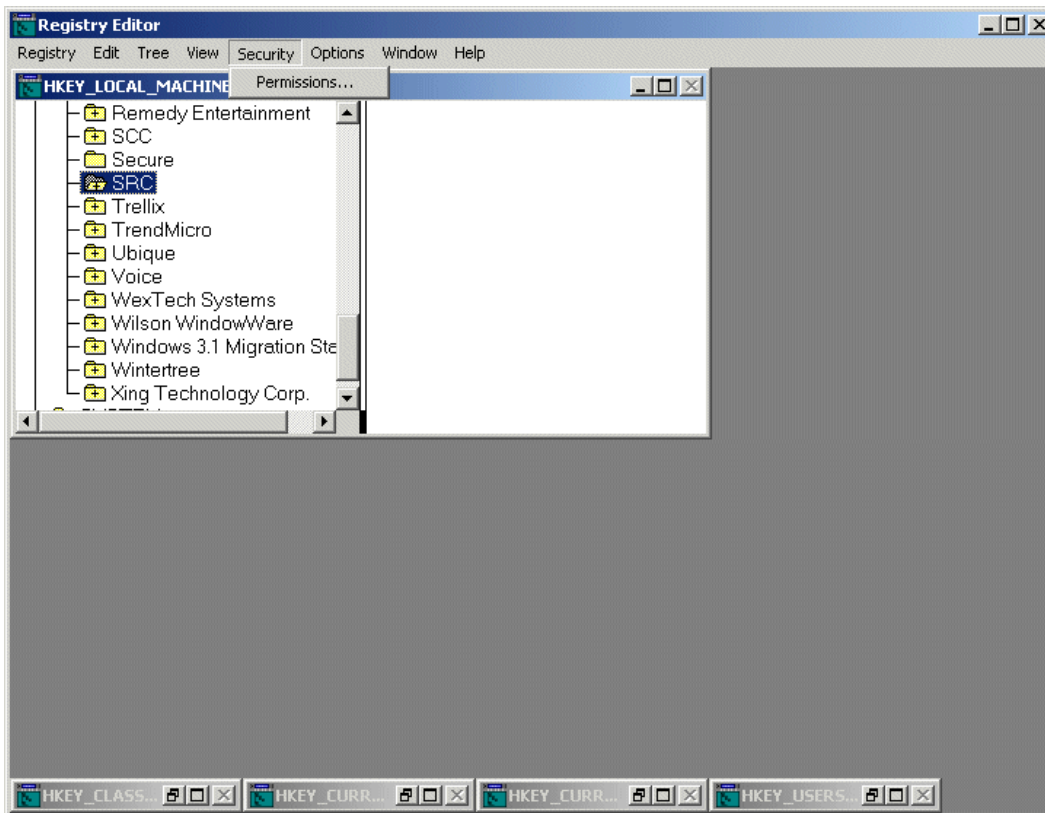
- 1) Click the Start menu and choose Run...



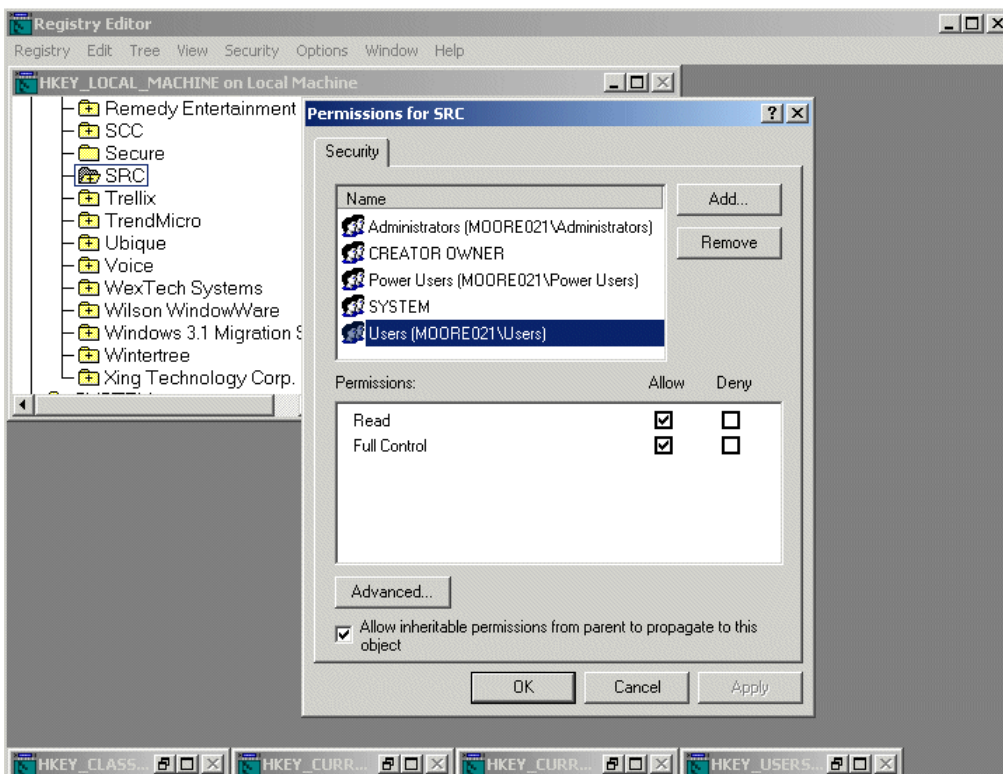
- 2) Enter *regedt32* as the file to open
- 3) Click OK and select the **HKEY\_LOCAL\_MACHINE** registry within Registry Editor and expand the SOFTWARE directory tree



- 4) Highlight the SRC directory by clicking it and then select Permissions from the Security menu



- 5) Select the Users group and modify the permission to allow Read and Full Control of this directory.



6) Click OK to accept this change.

There might also be a MapInfo directory within the SOFTWARE directory tree. If there is, follow the steps above and change the User permissions for that directory as well. Changing the permissions to these two directories gives a User full rights to just these directories and will not change any other limitations or security settings.

